


# Delta Hunting with a Camp

## 120+/- Acres in Bolivar County, MS



- 120± Acres Near Mound Bayou, MS
- Nice Cabin
- Established Trail System
- 3± Acre Fishpond
- 2 Duck Holes
- Enrolled in WRP



**Directions from Cleveland, MS:** From the intersection of US-8 and MS-61 N, drive north on MS-61 N for 11.4 miles. Turn right onto Moody Road and continue to drive for 3.9 miles. Turn right onto Gentry Road and in 1.6 miles, the camp will be on your right.

[Google Map Link](#)



*Call me today!*

**BRUCE WEST, REALTOR<sup>®</sup>**  
Bruce@TomSmithLand.com  
662.441.2500 **office** | 662.873.3007 **cell**



**TomSmithLandandHomes.com**

Information is believed to be accurate but not guaranteed.

This hunting camp is a rarity in the MS Delta. This Bolivar County, MS property offers a variety of outdoor activities with a comfortable cabin to enjoy. The 3± acre pond right out the cabin's back door is loaded with fish and has a well to maintain a constant water level. The well can also be used to pump water to one of the two duck holes. There is an excellent road system to access the available shooting houses and food plots. This area is secluded and provides excellent deer and duck hunting opportunities. The cabin sleeps four and has been renovated by the owner. There is a metal storage container to store your hunting supplies. There is also a fire pit area to sit and enjoy the outdoors after a successful day of hunting. This place has a ton to offer. If you would like a personal showing, call Bruce West: Cell 662-873-3007 or Office 662-441-2500.



*Call me today!*

**BRUCE WEST**, REALTOR<sup>™</sup>  
 Bruce@TomSmithLand.com  
 662.441.2500 office | 662.873.3007 cell



**TomSmithLandandHomes.com**

Information is believed to be accurate but not guaranteed.



*Call me today!*

**BRUCE WEST**, REALTOR<sup>™</sup>

Bruce@TomSmithLand.com

662.441.2500 **office** | 662.873.3007 **cell**



Expect More. Get More.



**TomSmithLandandHomes.com**

Information is believed to be accurate but not guaranteed.



*Call me today!*

**BRUCE WEST**, REALTOR™  
Bruce@TomSmithLand.com  
662.441.2500 office | 662.873.3007 cell



**TomSmithLandandHomes.com**

Information is believed to be accurate but not guaranteed.



*Call me today!*

**BRUCE WEST**, REALTOR<sup>SM</sup>  
Bruce@TomSmithLand.com  
662.441.2500 **office** | 662.873.3007 **cell**



**TomSmithLandandHomes.com**

Information is believed to be accurate but not guaranteed.



33.923569, -90.664827

GENTRY RD

120+/- Acres

[Interactive Aerial Map](#)

*Call me today!*

**BRUCE WEST**, REALTOR™

Bruce@TomSmithLand.com

662.441.2500 office | 662.873.3007 cell

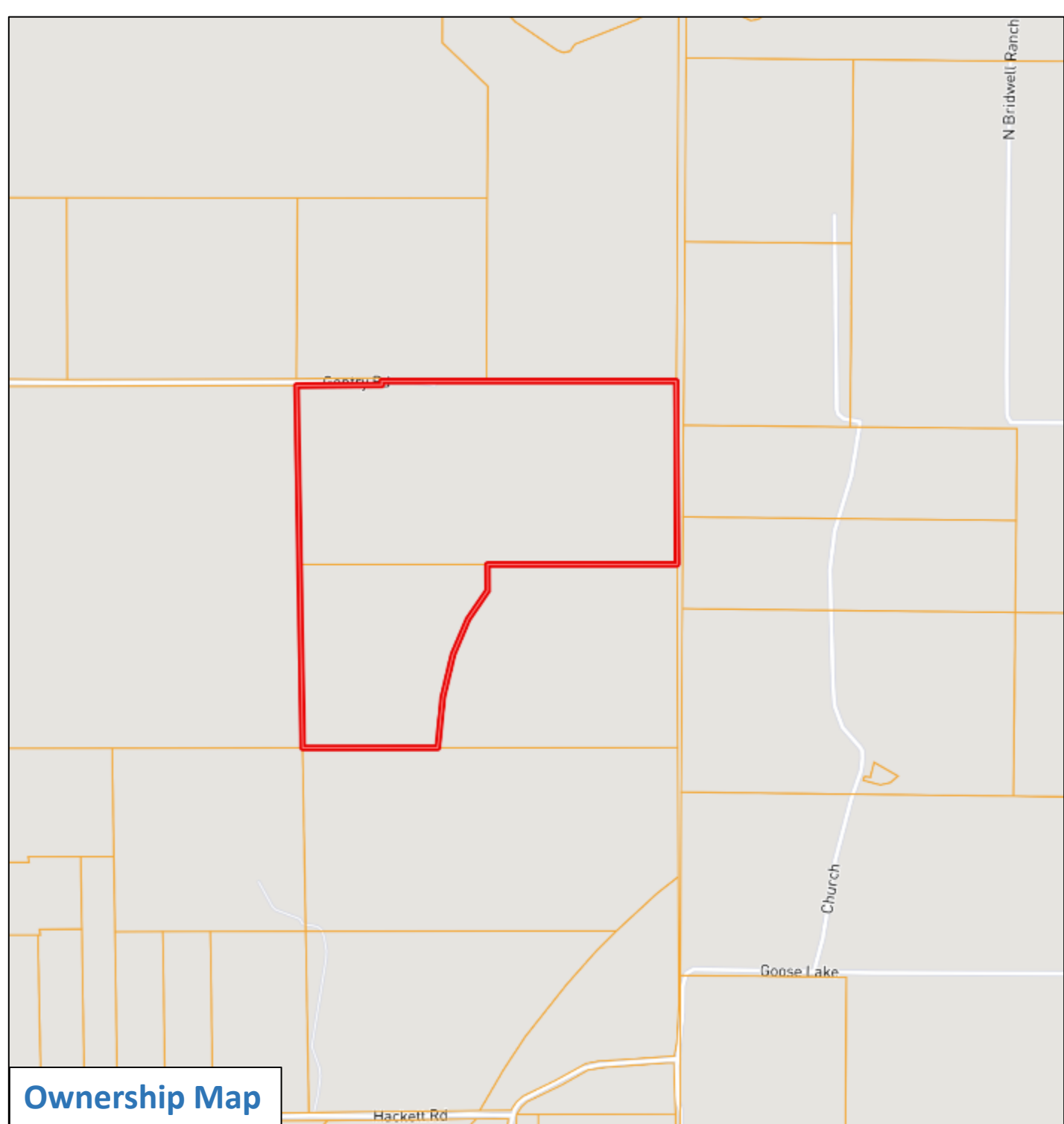


Expect More. Get More.

**TomSmithLandandHomes.com**

Information is believed to be accurate but not guaranteed.





Ownership Map

*Call me today!*

**BRUCE WEST**, REALTOR<sup>™</sup>

Bruce@TomSmithLand.com

662.441.2500 **office** | 662.873.3007 **cell**



Expect More. Get More.

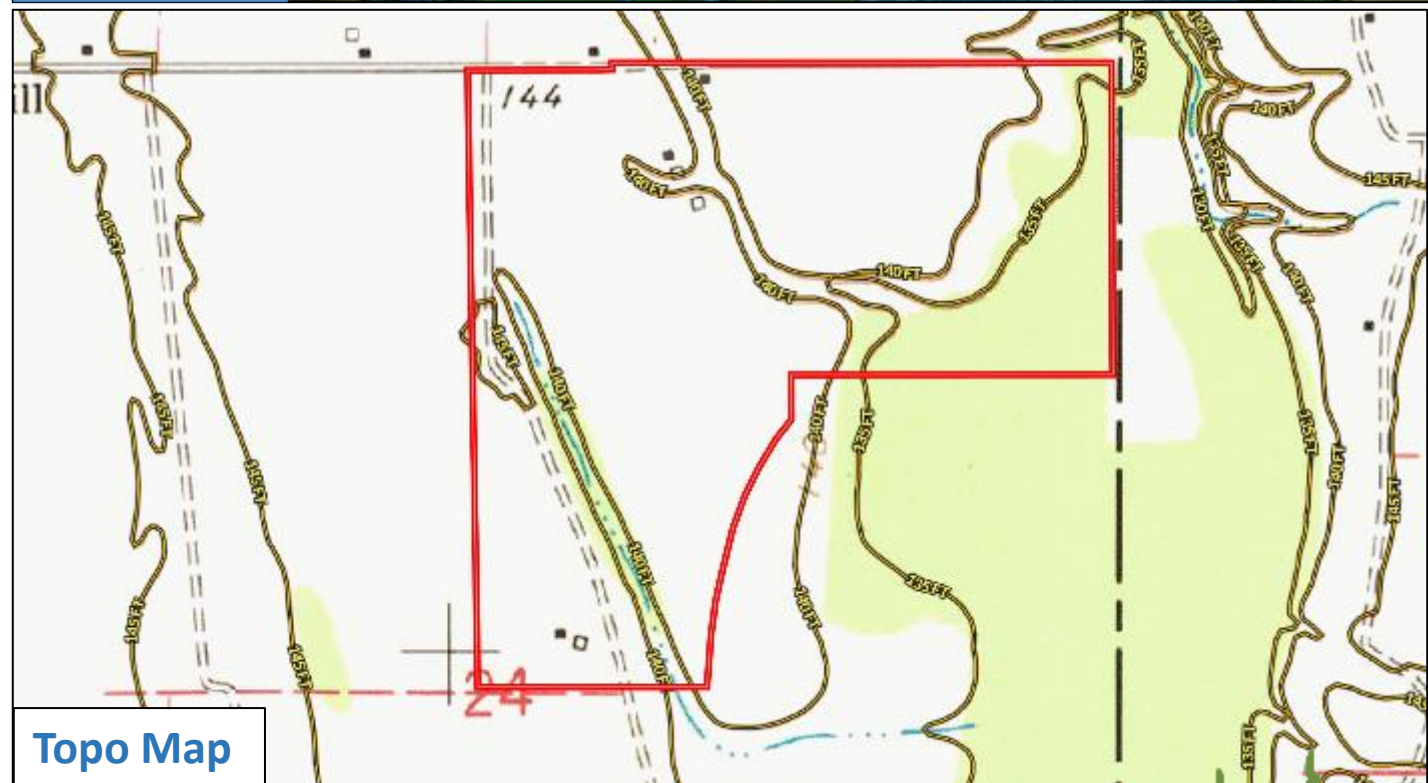
**TomSmithLandandHomes.com**

Information is believed to be accurate but not guaranteed.





Water Map



Topo Map

*Call me today!*

**BRUCE WEST**, REALTOR<sup>™</sup>

Bruce@TomSmithLand.com

662.441.2500 office | 662.873.3007 cell



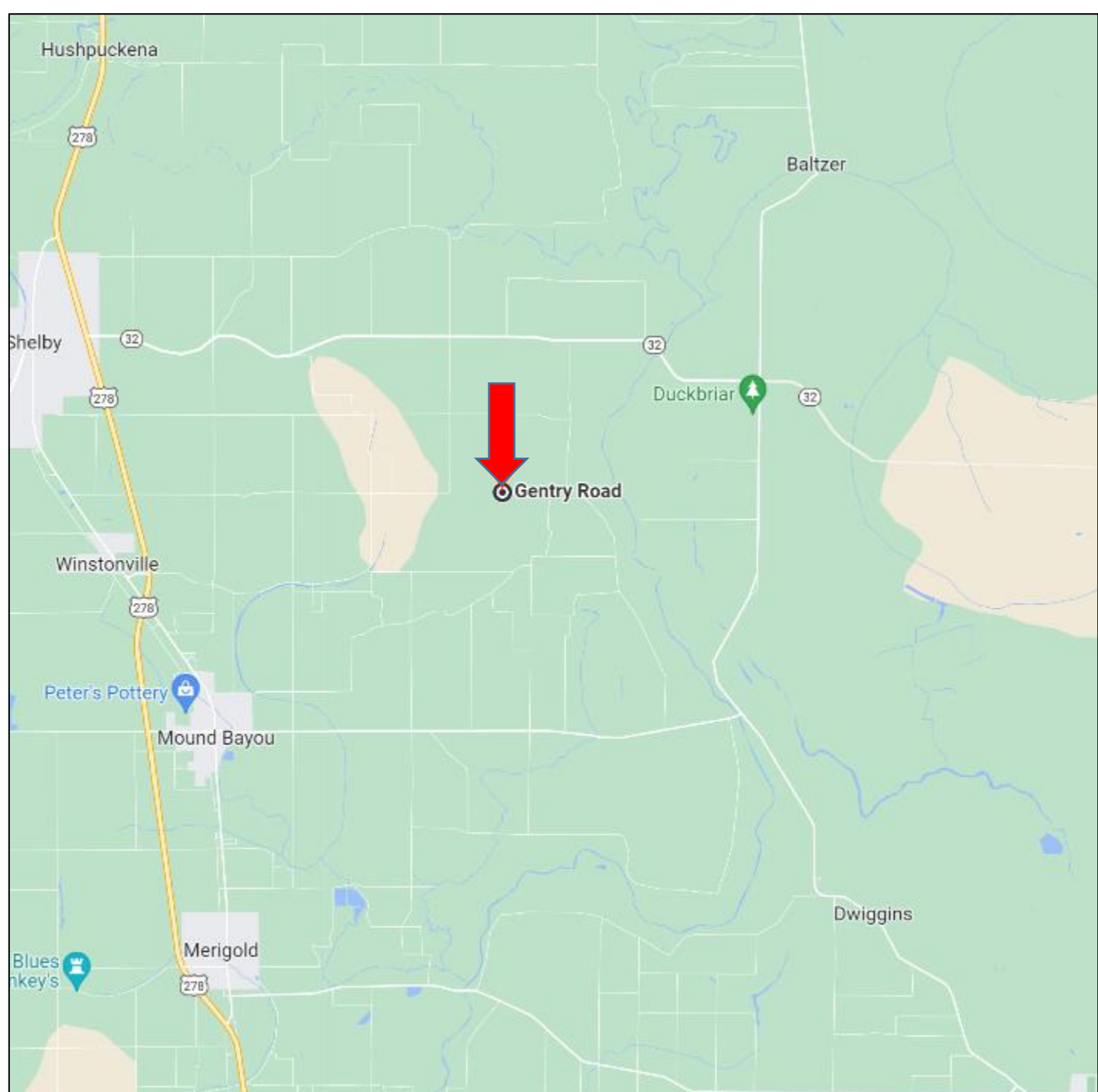
Expect More. Get More.

**TomSmithLandandHomes.com**

Information is believed to be accurate but not guaranteed.







**Directions from Cleveland, MS:** From the intersection of US-8 and MS-61, drive north on MS-61 N for 11.4 miles. Turn right onto Moody Road and continue to drive for 3.9 miles. Turn right onto Gentry Road and in 1.6 miles, the camp will be on your right.



*Call me today!*

**BRUCE WEST, REALTOR<sup>®</sup>**  
Bruce@TomSmithLand.com  
662.441.2500 **office** | 662.873.3007 **cell**



**TomSmithLandandHomes.com**

Information is believed to be accurate but not guaranteed.