

# 3 BEDROOM/2 BATH MOBILE HOME ON 2± ACRES IN LINCOLN COUNTY, MS



**\$69,000**

**3231 Mallalieu Dr SE, Ruth, MS 39662**

This three bedroom, two bath mobile home on 2± acres in Lincoln County, MS, is definitely worth seeing! This home is located in the Enterprise School District, in the community of Ruth, MS. Upon entering the front door, there is a living room, dining area, large kitchen, and separate den with fireplace. The kitchen includes all appliances. The primary bedroom is very spacious with a bathroom suite that includes two vanities, a huge garden tub, and a separate shower, with tons of storage! All bedrooms have large closets as well! With 2,016± square feet, you have lots of room to roam! A sliding back door that leads onto the back deck as well, overlooking the ample backyard!

*Directions from Downtown Brookhaven, MS:* Travel east on E Monticello St toward S 2nd St NE, in 3.5 miles, turn right onto E Lincoln Dr NE, in 1.2 miles, take a slight right onto Mallalieu Dr, the destination will be on the left in 13.9 miles.

Address: 3231 Mallalieu Dr Ruth, MS 39662

[GOOGLE MAP LINK](#)



*Call me today!*

**TRINITY WEBB**, REALTOR®  
Trinity@TomSmithHomes.com  
601.990.5070 office | 769.218.7860 cell



**TomSmithLandandHomes.com**

Information is believed to be accurate but not guaranteed.



*Call me today!*

**TRINITY WEBB**, REALTOR®  
Trinity@TomSmithHomes.com  
601.990.5070 office | 769.218.7860 cell



Expect More. Get More.

**TomSmithLandandHomes.com**

Information is believed to be accurate but not guaranteed.



*Call me today!*

**TRINITY WEBB**, REALTOR®  
Trinity@TomSmithHomes.com  
601.990.5070 office | 769.218.7860 cell



Expect More. Get More.

**TomSmithLandandHomes.com**

Information is believed to be accurate but not guaranteed.



*Call me today!*

**TRINITY WEBB**, REALTOR®  
Trinity@TomSmithHomes.com  
601.990.5070 office | 769.218.7860 cell

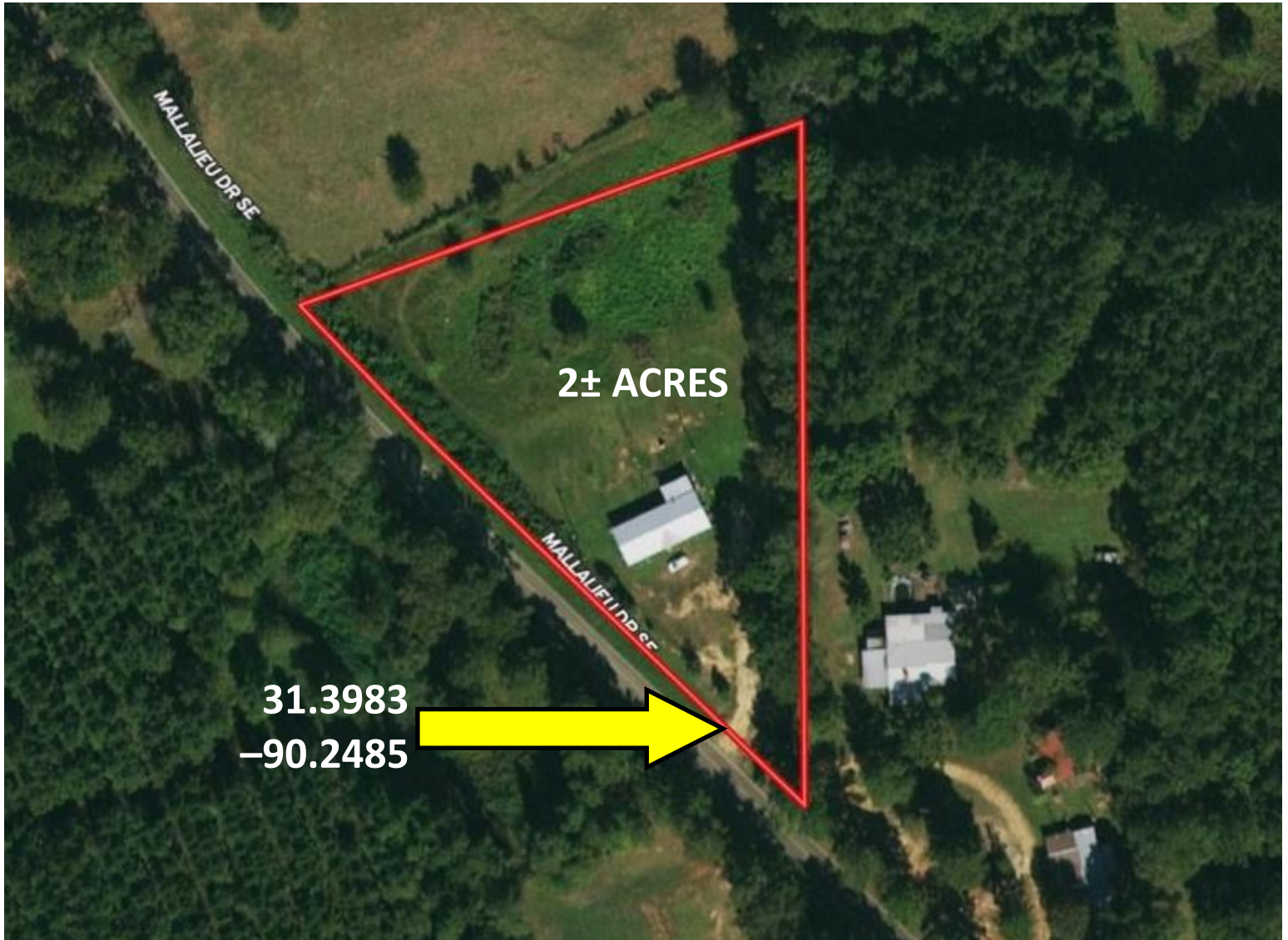
**Tom  
Smith  
LAND AND  
HOMES**  
Expect More. Get More.



**TomSmithLandandHomes.com**

Information is believed to be accurate but not guaranteed.

# AERIAL MAP



[INTERACTIVE MAP LINK](#)

*Call me today!*

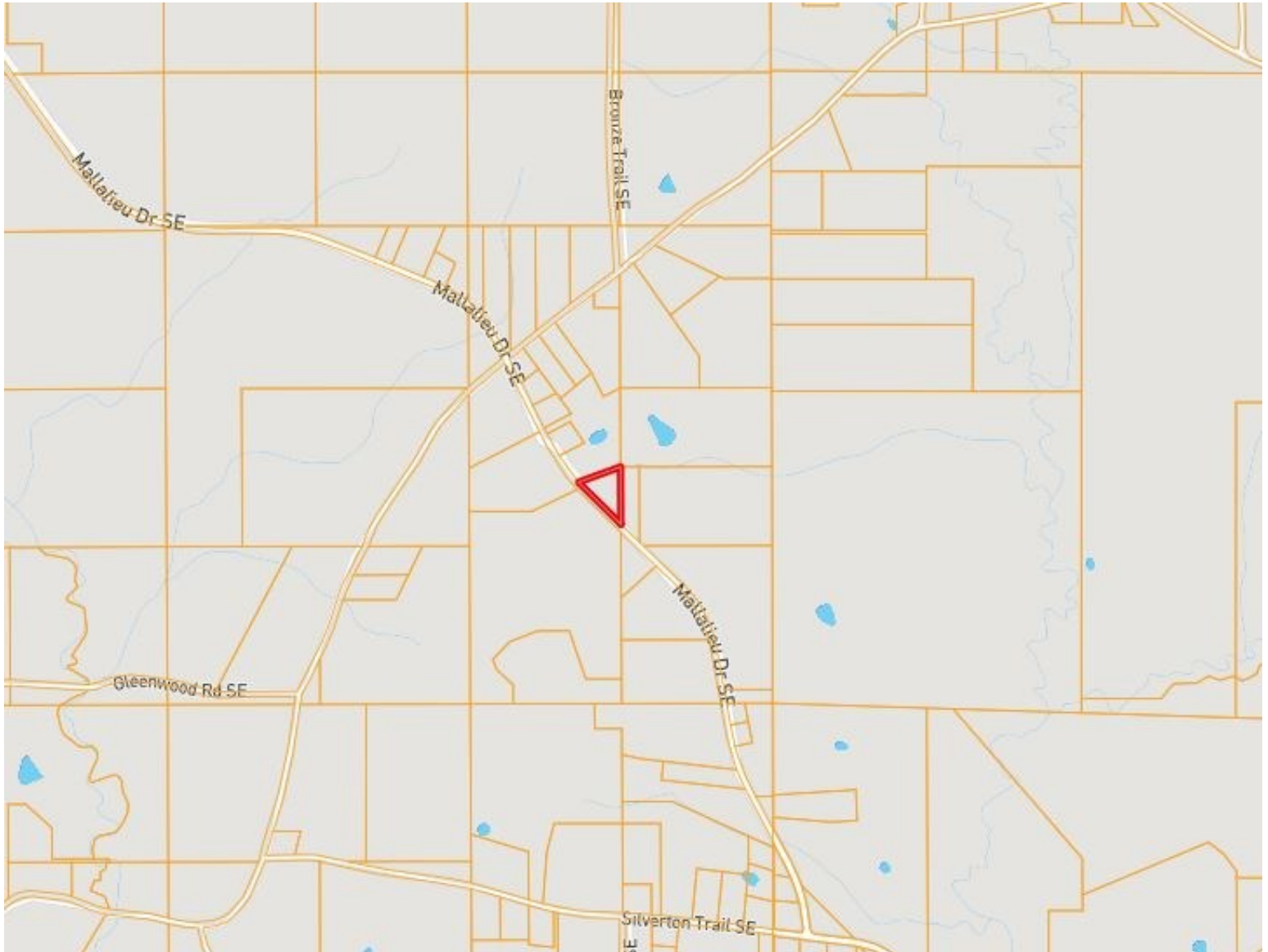
**TRINITY WEBB**, REALTOR®  
Trinity@TomSmithHomes.com  
601.990.5070 **office** | 769.218.7860 **cell**



[TomSmithLandandHomes.com](http://TomSmithLandandHomes.com)

Information is believed to be accurate but not guaranteed.

# OWNERSHIP MAP



*Call me today!*

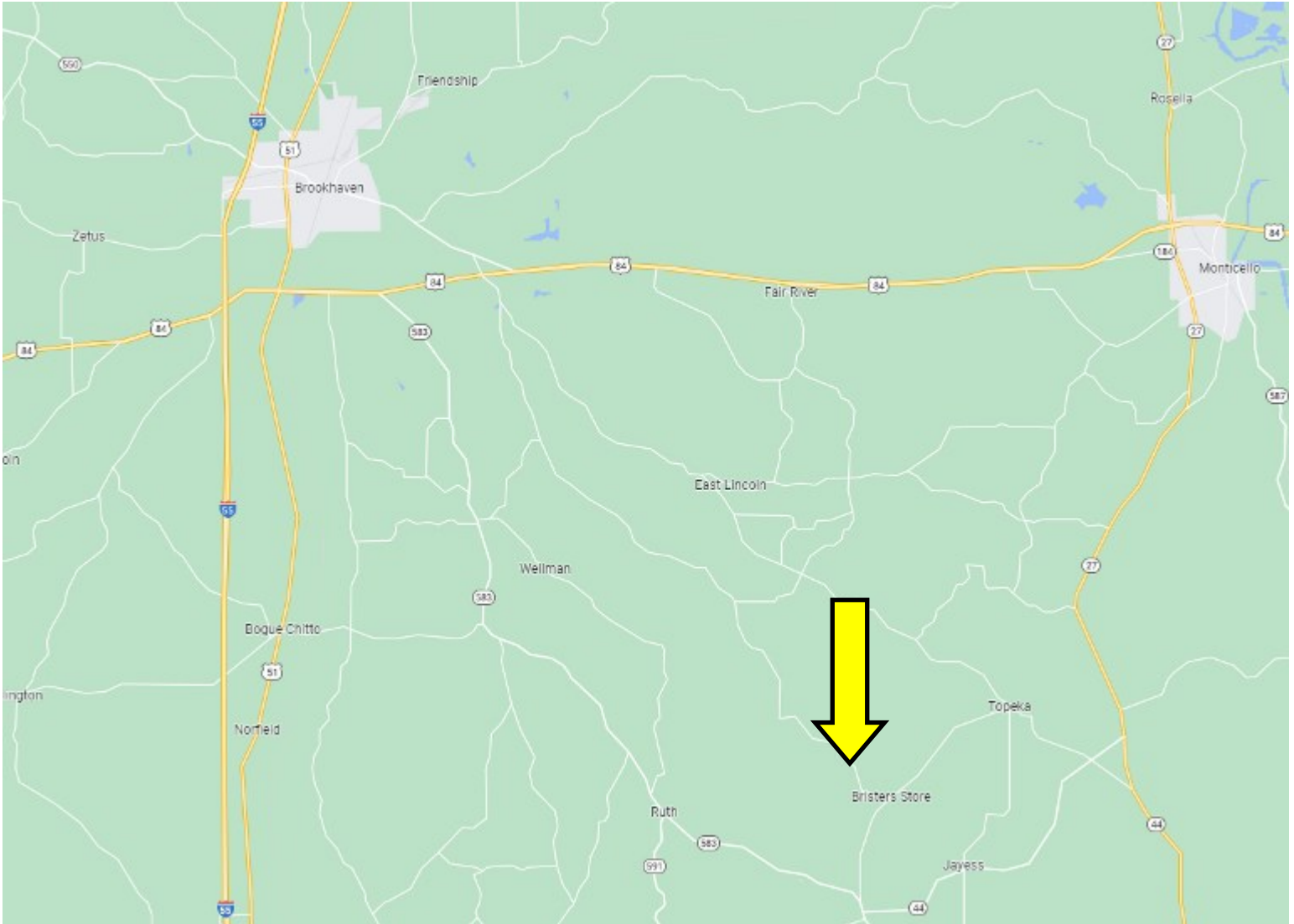
**TRINITY WEBB**, REALTOR®  
Trinity@TomSmithHomes.com  
601.990.5070 **office** | 769.218.7860 **cell**



**TomSmithLandandHomes.com**

Information is believed to be accurate but not guaranteed.

# DIRECTIONAL MAP



Directions from Downtown Brookhaven, MS: Travel east on E Monticello St toward S 2nd St NE, in 3.5 miles, turn right onto E Lincoln Dr NE, in 1.2 miles, take a slight right onto Mallalieu Dr, the destination will be on the left in 13.9 miles.

Address: 3231 Mallalieu Dr Ruth, MS 39662

## GOOGLE MAP LINK

*Call me today!*

**TRINITY WEBB**, REALTOR®

Trinity@TomSmithHomes.com

601.990.5070 office | 769.218.7860 cell



# TomSmithLandandHomes.com

Information is believed to be accurate but not guaranteed.