

11.45+/- COMMERCIAL ZONES ACRES LOCATED IN STARKVILLE OKTIBBEHA COUNTY, MS



\$1,574,375

DEVELOPERS, THIS ONE IS FOR YOU!!! Look at this 11.45+/- surveyed commercial acre property in Starkville, MS. The property is in the city limits of Starkville and features 1,250 feet of frontage on Hwy 25 South and 400 feet of frontage on Cornerstone Blvd. This property is unique as it is adjoining the City of Starkville's latest development, Cornerstone Park! Cornerstone Park is a 124-acre athletic complex set to open in 2023. This park will be the newest destination in the Southeast for elite sports, recreation, and events. This property is also located near Hwy 12. Hwy 12 is home to Wal-Mart, Kroger, Lowe's, George Bryan Airport, and other major retailers are just east of this property. The superior visibility and incredible location make this a perfect site for a hotel, restaurant, retail shopping center, or gas station. This property is zoned commercial and will need to be developed according to the City of Starkville specifications and guidelines. Utilities for the property are available. For more details and to schedule a showing, call Harper Day today!

Directions from Wal-Mart on Hwy 12 in Starkville, MS: Travel approximately .5 miles west and take the Hwy 25 South exit. Travel approximately 2.3 miles south towards Louisville and turn right onto Cornerstone Boulevard. The property will be on the north side of the Cornerstone Park Entrance. [Google Map](#)



Call me today!

HARPER DAY, REALTOR®
Harper@TomSmithLand.com
662.268.6333 office | 662.694.9751 cell



Expect More. Get More.

TomSmithLandandHomes.com

Information is believed to be accurate but not guaranteed.



Call me today!

HARPER DAY, REALTOR®
Harper@TomSmithLand.com
662.268.6333 office | 662.694.9751 cell



TomSmithLandandHomes.com

Information is believed to be accurate but not guaranteed.



Call me today!

HARPER DAY, REALTOR®
Harper@TomSmithLand.com
662.268.6333 office | 662.694.9751 cell



Expect More. Get More.



TomSmithLandandHomes.com

Information is believed to be accurate but not guaranteed.



Call me today!

HARPER DAY, REALTOR®
Harper@TomSmithLand.com
662.268.6333 office | 662.694.9751 cell



TomSmithLandandHomes.com

Information is believed to be accurate but not guaranteed.

Interactive Aerial Map

11.45 +/-
Acres

33.4276 , -88.8618

*Call me
today!*

HARPER DAY, REALTOR®
Harper@TomSmithLand.com
662.268.6333 office | 662.694.9751 cell



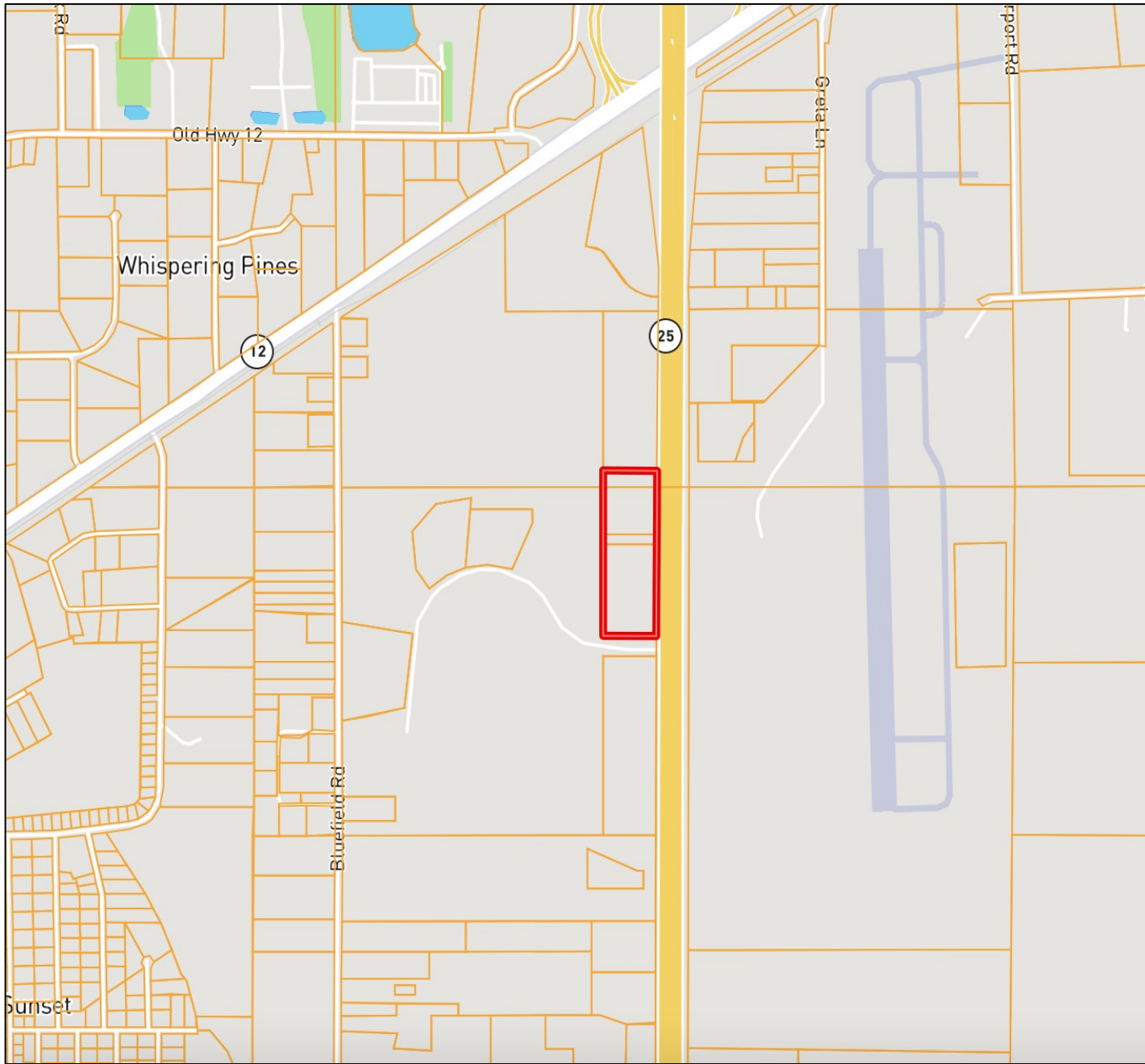
Expect More. Get More.



TomSmithLandandHomes.com

Information is believed to be accurate but not guaranteed.

Ownership Map



Call me today!

HARPER DAY, REALTOR®

Harper@TomSmithLand.com

662.268.6333 office | 662.694.9751 cell

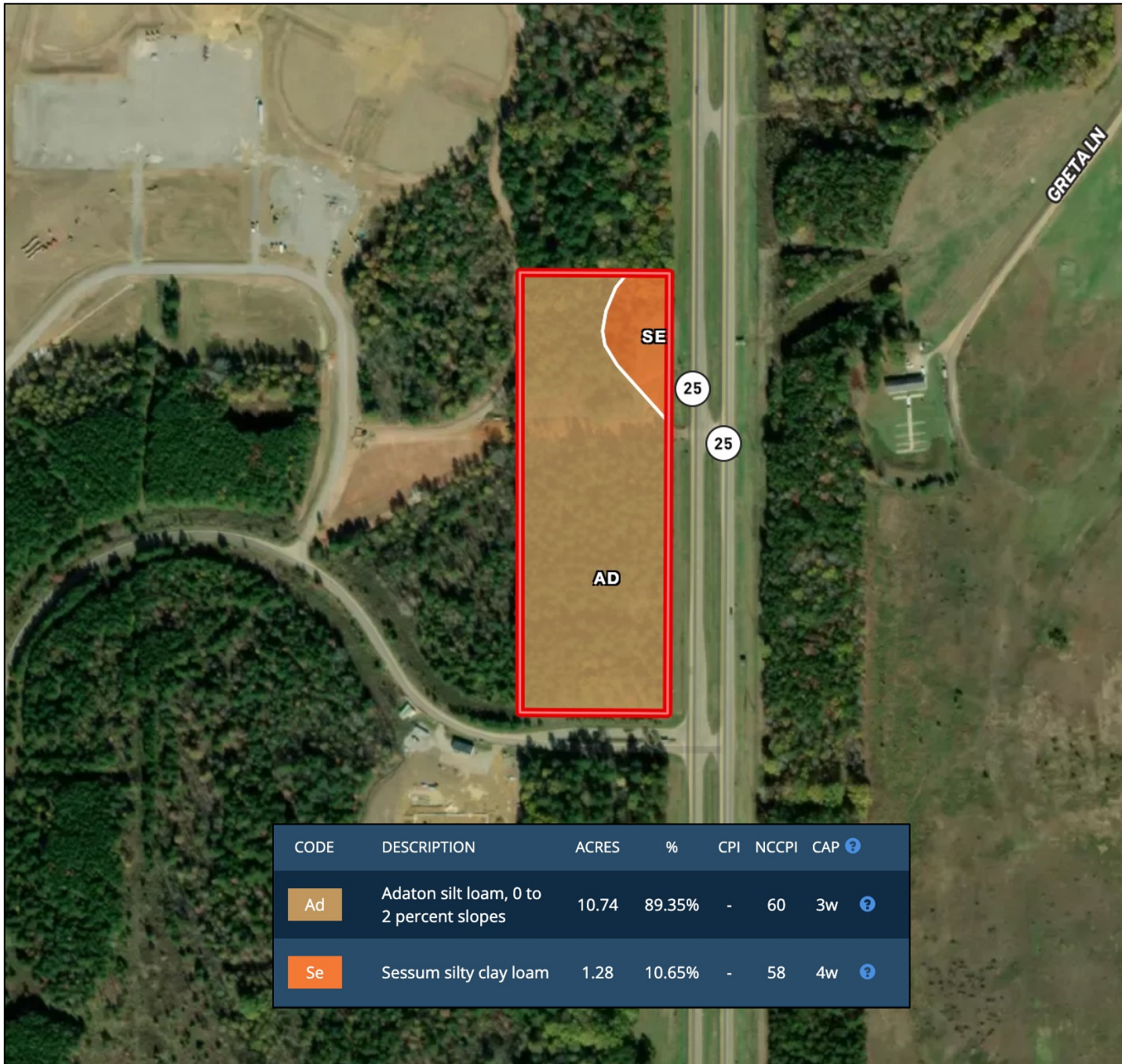


Expect More. Get More.

TomSmithLandandHomes.com

Information is believed to be accurate but not guaranteed.

Soil Map and Soil Description



Call me today!

HARPER DAY, REALTOR®
 Harper@TomSmithLand.com
 662.268.6333 office | 662.694.9751 cell



TomSmithLandandHomes.com

Information is believed to be accurate but not guaranteed.

Topographical Map



Call me today!

HARPER DAY, REALTOR®

Harper@TomSmithLand.com

662.268.6333 office | 662.694.9751 cell



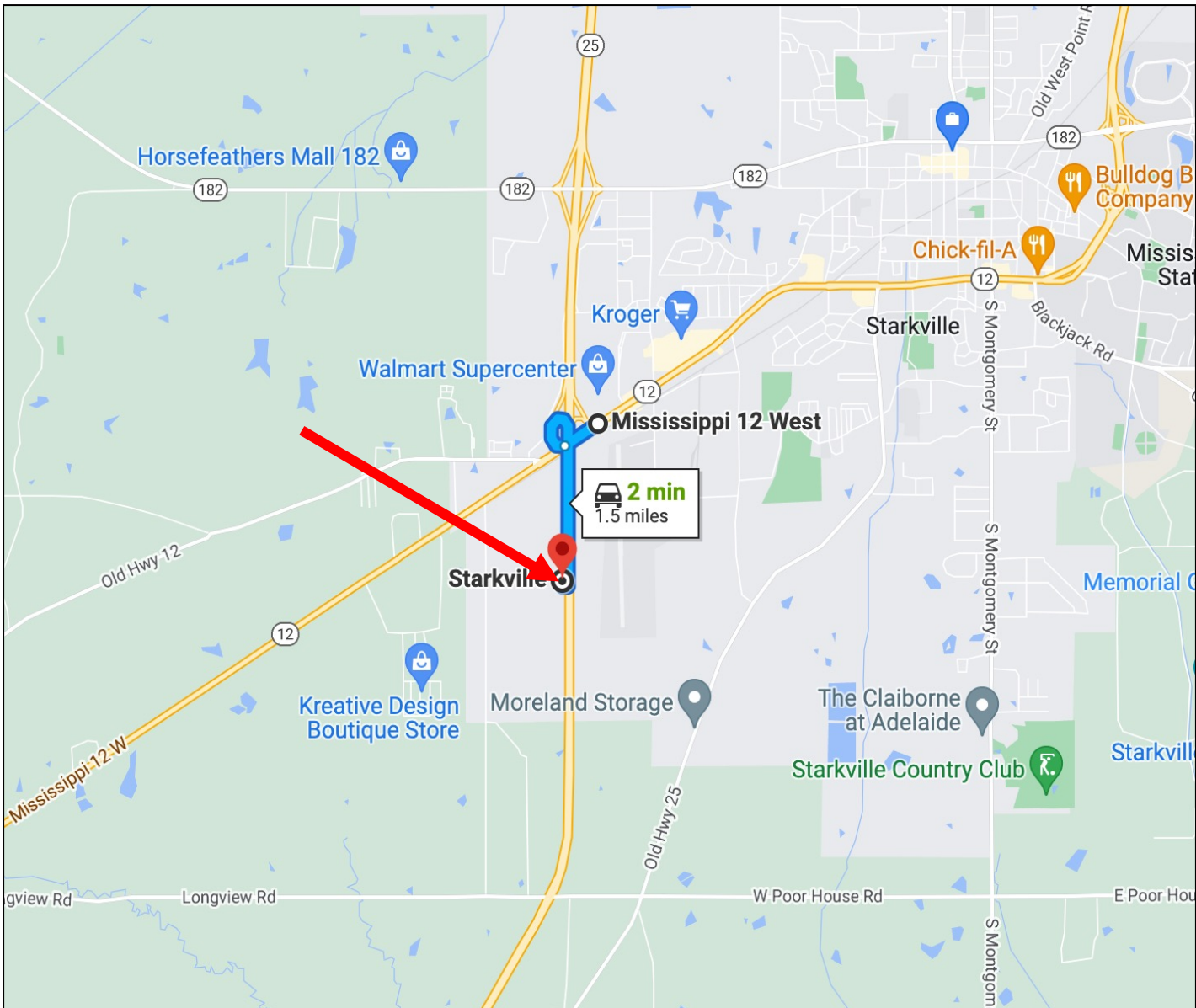
Expect More. Get More.



TomSmithLandandHomes.com

Information is believed to be accurate but not guaranteed.

Directional Map



Directions from Wal-Mart on Hwy 12 in Starkville, MS: Travel approximately .5 miles west and take the Hwy 25 South exit. Travel approximately 2.3 miles south towards Louisville and turn right onto Cornerstone Boulevard. The property will be on the north side of the Cornerstone Park Entrance.

[Interactive Google Map](#)

Call me today!

HARPER DAY, REALTOR®

Harper@TomSmithLand.com

662.268.6333 office | 662.694.9751 cell



Expect More. Get More.

TomSmithLandandHomes.com

Information is believed to be accurate but not guaranteed.