

GREAT HUNTING TRACT IN FRANKLIN COUNTY

97± Acres in Franklin County, MS

\$388,000



This 97± acre property in Franklin County is the perfect tract for family and friends. This tract offers great hunting including deer and turkey. The property is located in Meadville and has good road frontage on Hospital Road. There are established road systems throughout the property for easy access across the entire 97± acres. There are mixed mature hardwood and pines throughout to make for a great habitat for wildlife. As well as the 97± of great hunting that is offered with the property, the Homochitto National Forest is just a short one mile from the property giving you access to thousands of more acres to enjoy. There is 13± acres on the east side of Hospital road that would make for a great site to put a camp or home. Utilities are available on the road. This tract is the perfect size and makeup for incredible hunting. Call Travis Smith today to schedule your private showing! **DIRECTIONS FROM INTERSECTION HWY 184 AND HWY 84 BUDE, MS:** Head west on US-84 W, then turn North at the 4 way stop of Hwy 184 and Hwy 84 in 0.7 miles turn right on to Union Church Rd, continue onto Hospital Rd for 8.4 miles then property will be on the left and right.



Call me today!

TRAVIS SMITH, REALTOR®

Travis@TomSmithLand.com

601.898.2772 office | 601.600.0428 cell



Expect More. Get More.

TomSmithLandandHomes.com

Information is believed to be accurate but not guaranteed.





Call me today!



TRAVIS SMITH, REALTOR®
Travis@TomSmithLand.com
601.898.2772 office | 601.600.0428 cell



Expect More. Get More.

TomSmithLandandHomes.com

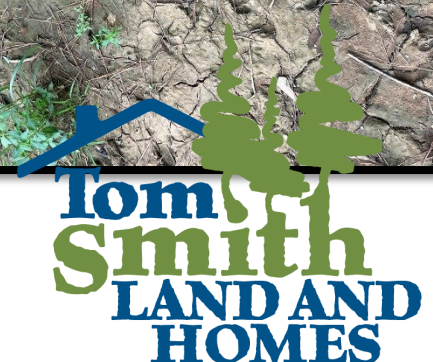
Information is believed to be accurate but not guaranteed.



Call me today!



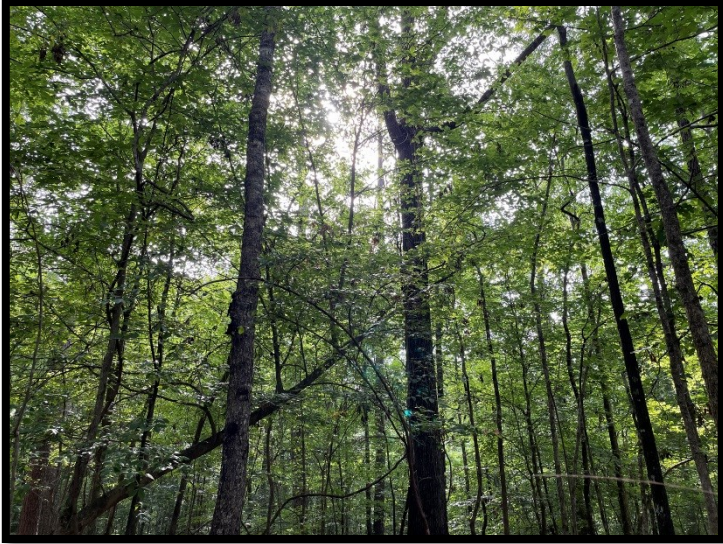
TRAVIS SMITH, REALTOR®
Travis@TomSmithLand.com
601.898.2772 office | 601.600.0428 cell



Expect More. Get More.

TomSmithLandandHomes.com

Information is believed to be accurate but not guaranteed.



Call me today!



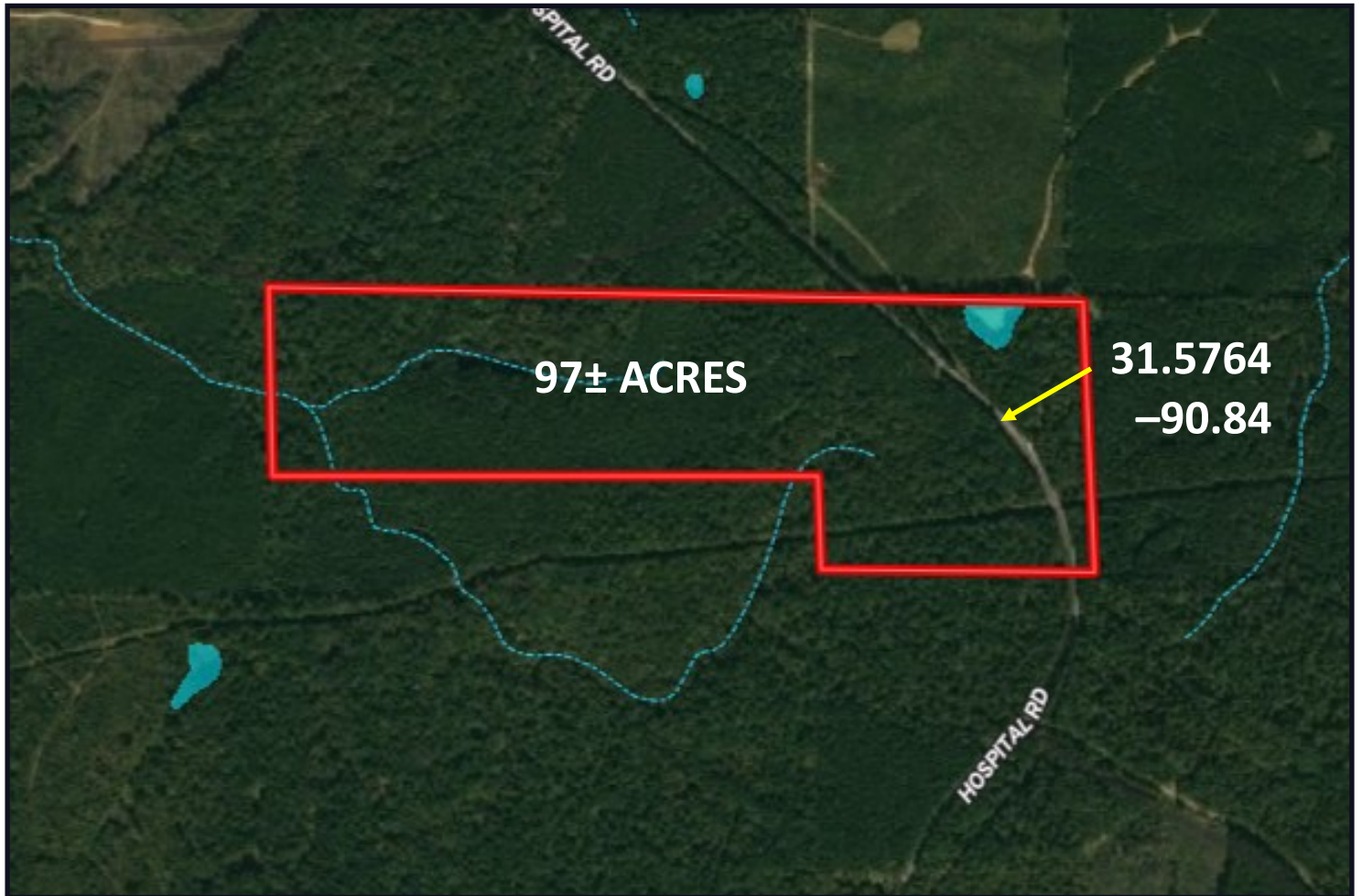
TRAVIS SMITH, REALTOR®
Travis@TomSmithLand.com
601.898.2772 office | 601.600.0428 cell

Expect More. Get More.

TomSmithLandandHomes.com

Information is believed to be accurate but not guaranteed.

AERIAL MAP



CLICK [HERE](#) FOR AN INTERACTIVE MAP

Call me today!

TRAVIS SMITH, REALTOR®
Travis@TomSmithLand.com
601.898.2772 **office** | 601.600.0428 **cell**



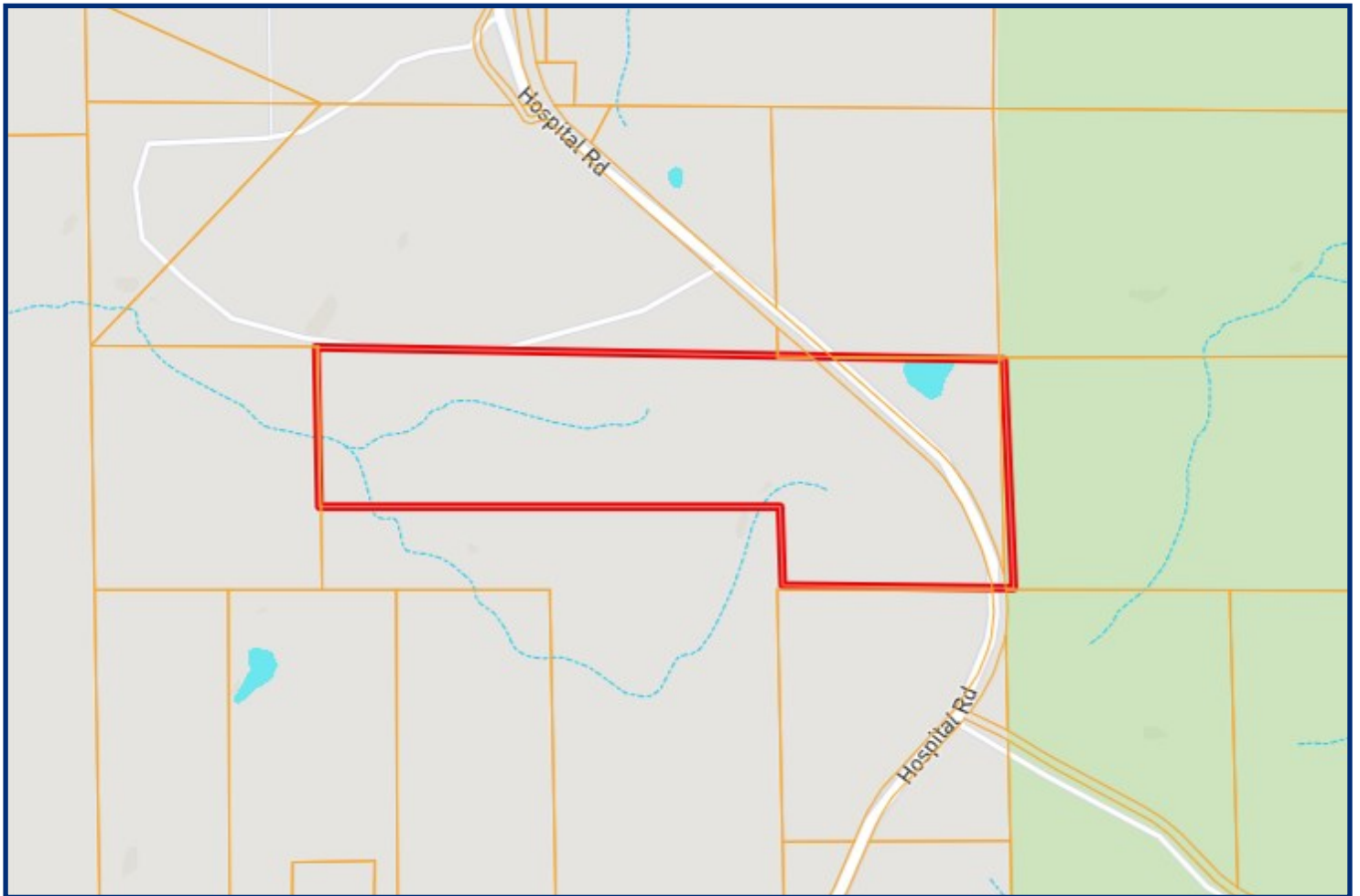
Expect More. Get More.



TomSmithLandandHomes.com

Information is believed to be accurate but not guaranteed.

OWNERSHIP MAP



Call me today!

TRAVIS SMITH, REALTOR®
Travis@TomSmithLand.com
601.898.2772 office | 601.600.0428 cell



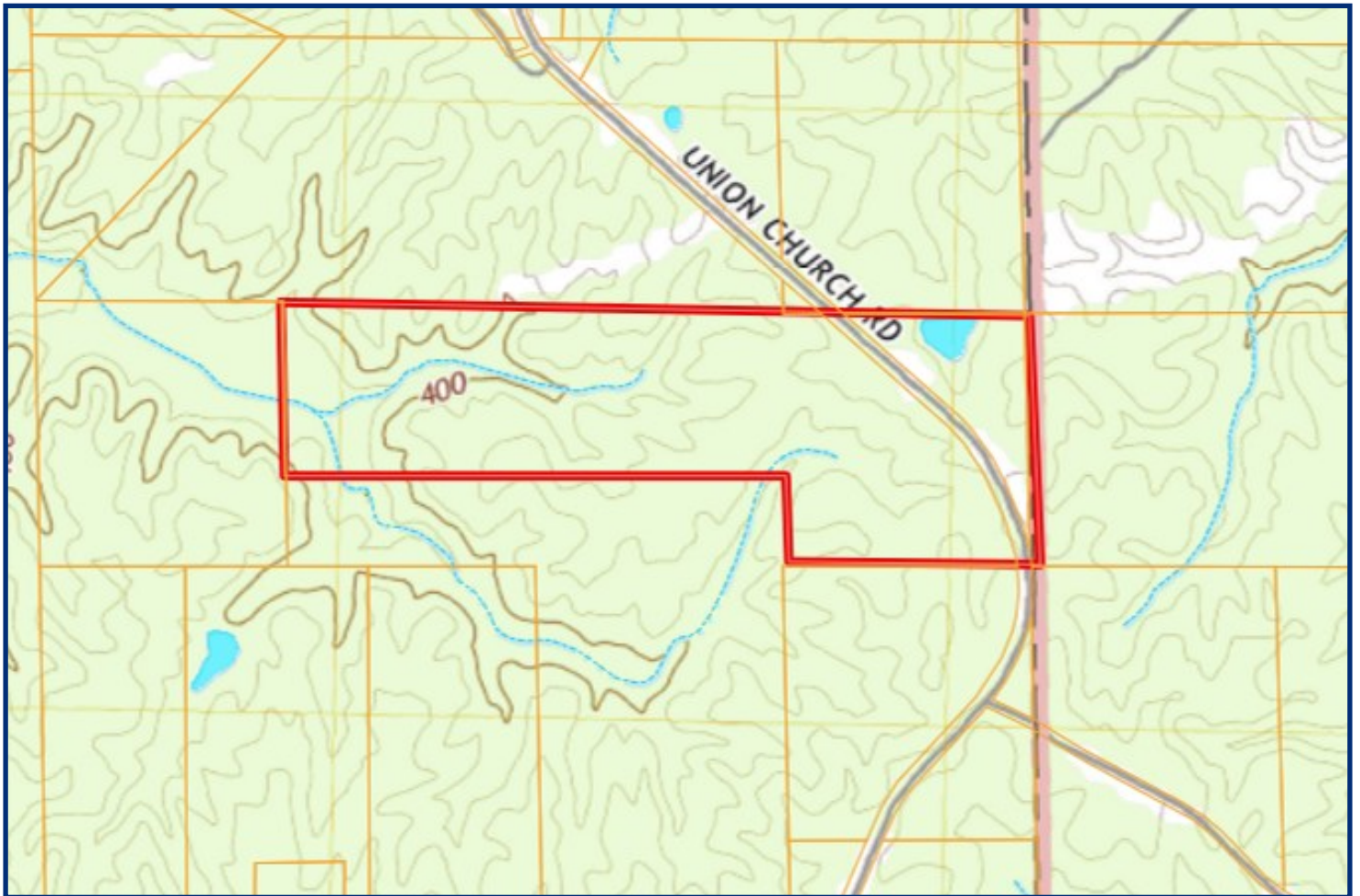
Expect More. Get More.



TomSmithLandandHomes.com

Information is believed to be accurate but not guaranteed.

TOPO MAP



Call me today!

TRAVIS SMITH, REALTOR®
Travis@TomSmithLand.com
601.898.2772 office | 601.600.0428 cell

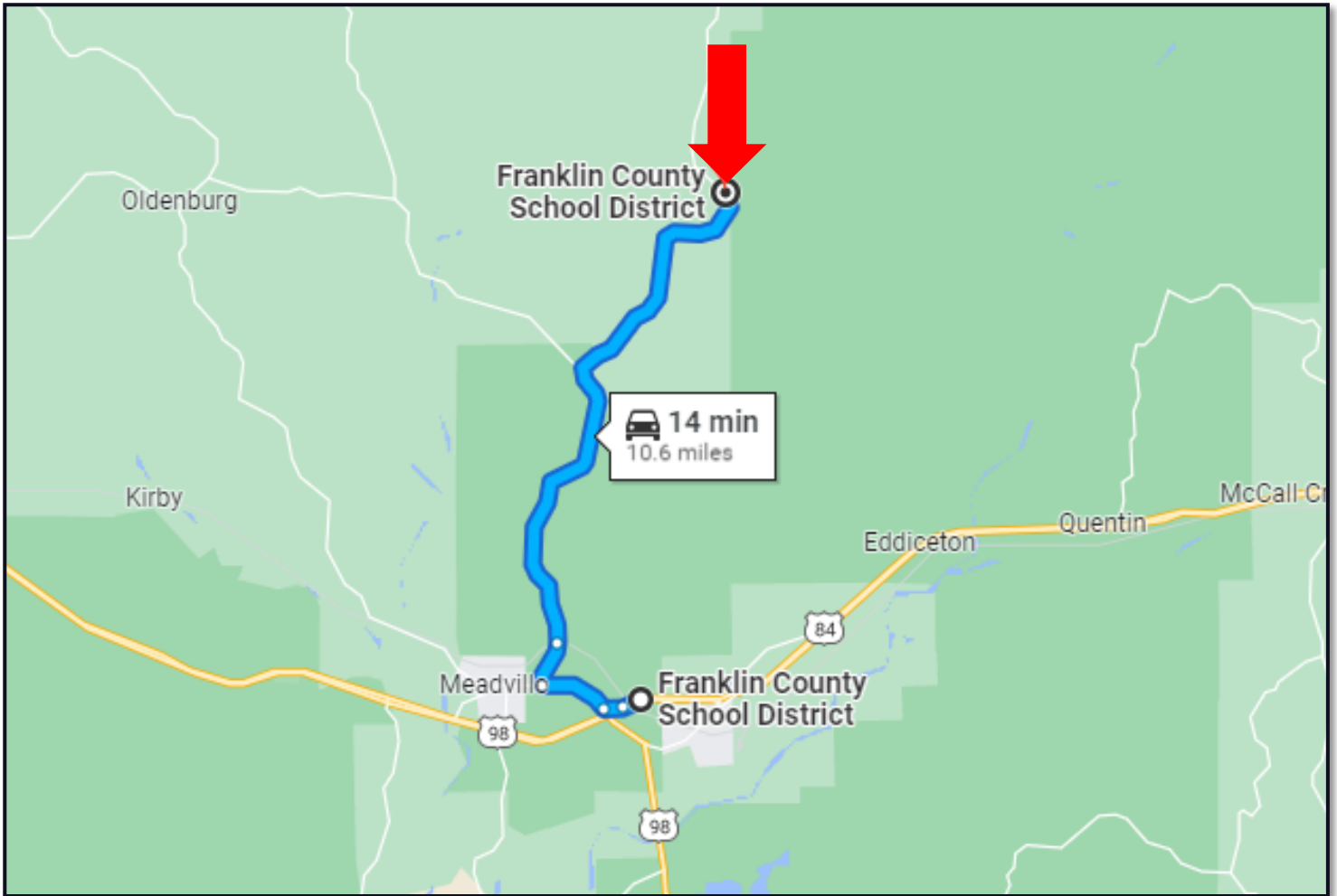


Expect More. Get More.

TomSmithLandandHomes.com

Information is believed to be accurate but not guaranteed.

DIRECTIONAL MAP



DIRECTIONS FROM INTERSECTION HWY 184 AND HWY 84 BUDE, MS:
Head west on US-84 W, then turn North at the 4 way stop of Hwy 184 and Hwy 84 in 0.7 miles turn right on to Union Church Rd, continue onto Hospital Rd for 8.4 miles then property will be on the left and right.



Call me today!

TRAVIS SMITH, REALTOR®
Travis@TomSmithLand.com
601.898.2772 office | 601.600.0428 cell



TomSmithLandandHomes.com

Information is believed to be accurate but not guaranteed.