

# Charming Home in Bolivar County

## Cleveland, MS



**Address: 1109 University Street Cleveland, MS 38732**

Check out this three bedroom, two bathroom home in Bolivar County. This home has plenty of room with 2,260 sq ft. This home features two dens, a mud room, a kitchen open to a dining room area with gorgeous brick floors, three bedrooms, and two bathrooms. The front porch is welcoming and so, could easily be screened in. The backyard is fenced and has plenty of room for cookouts and your favorite pets. Why wait, call Tracey today for your private showing! (662)719-4720 or (662)441-2500.

**Directions from the intersection of Hwy 61 and Hwy 8 in Cleveland, MS:** Travel West on Hwy 8 towards N. Chrisman Ave, in 0.6 miles turn left onto N. Leflore Ave and in 0.1 miles the destination is on the left. **Click for Google Map Directions.**



*Call me today!*

**TRACEY BELL**, MANAGING BROKER  
Tracey@TomSmithLand.com  
662.441.2500 **office** | 662.719.4720 **cell**



# TomSmithLandandHomes.com

Information is believed to be accurate but not guaranteed.





*Call me today!*

**TRACEY BELL**, MANAGING BROKER  
 Tracey@TomSmithLand.com  
 662.441.2500 **office** | 662.719.4720 **cell**



**TomSmithLandandHomes.com**

Information is believed to be accurate but not guaranteed.





*Call me today!*

**TRACEY BELL**, MANAGING BROKER  
 Tracey@TomSmithLand.com  
 662.441.2500 **office** | 662.719.4720 **cell**



**TomSmithLandandHomes.com**

Information is believed to be accurate but not guaranteed.





*Call me today!*

**TRACEY BELL**, MANAGING BROKER  
Tracey@TomSmithLand.com  
662.441.2500 **office** | 662.719.4720 **cell**



**TomSmithLandandHomes.com**

Information is believed to be accurate but not guaranteed.





*Call me today!*

**TRACEY BELL**, MANAGING BROKER  
Tracey@TomSmithLand.com  
662.441.2500 **office** | 662.719.4720 **cell**

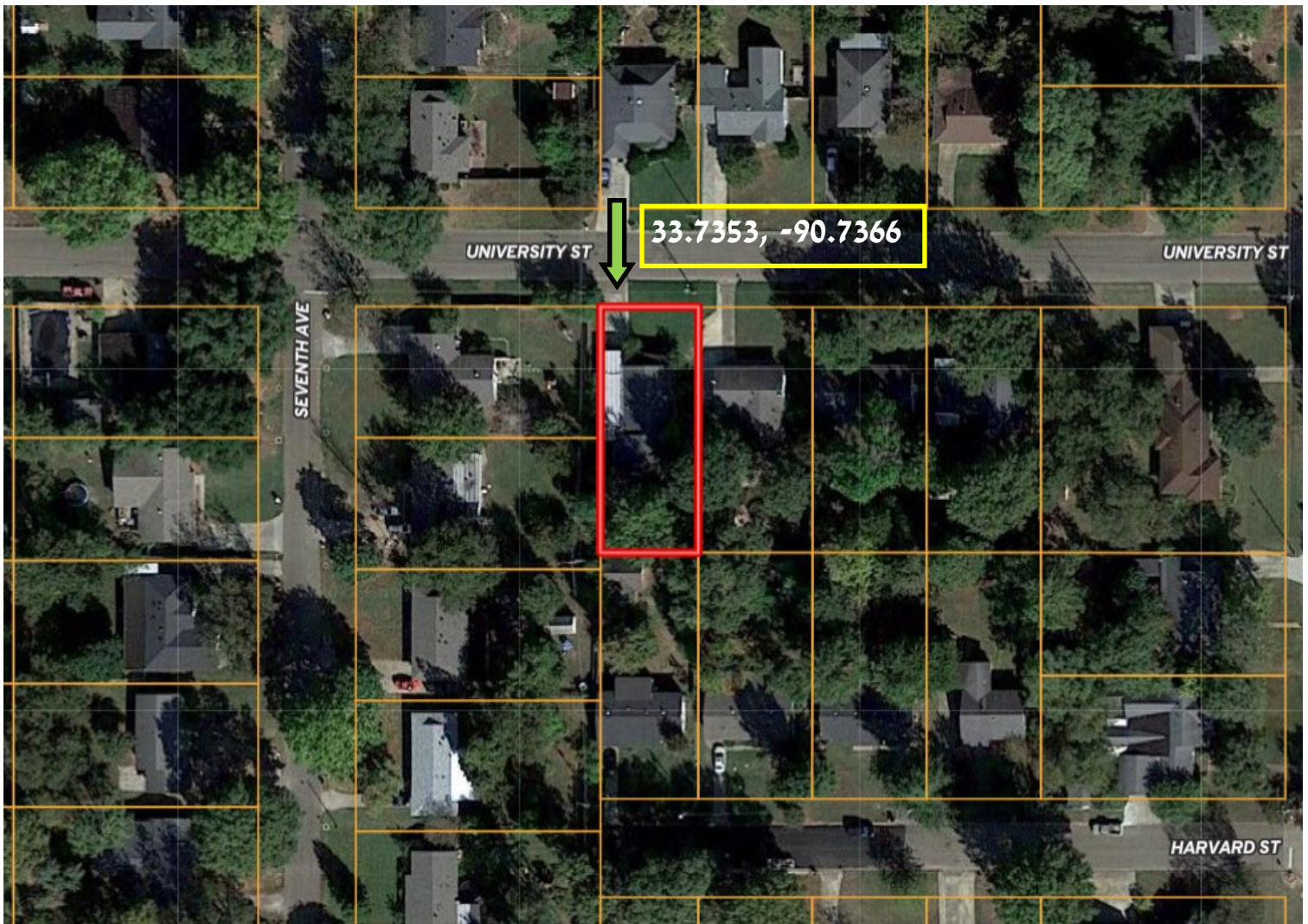


**TomSmithLandandHomes.com**

Information is believed to be accurate but not guaranteed.



# AERIAL MAP



[Click for Interactive Map](#)

*Call me today!*

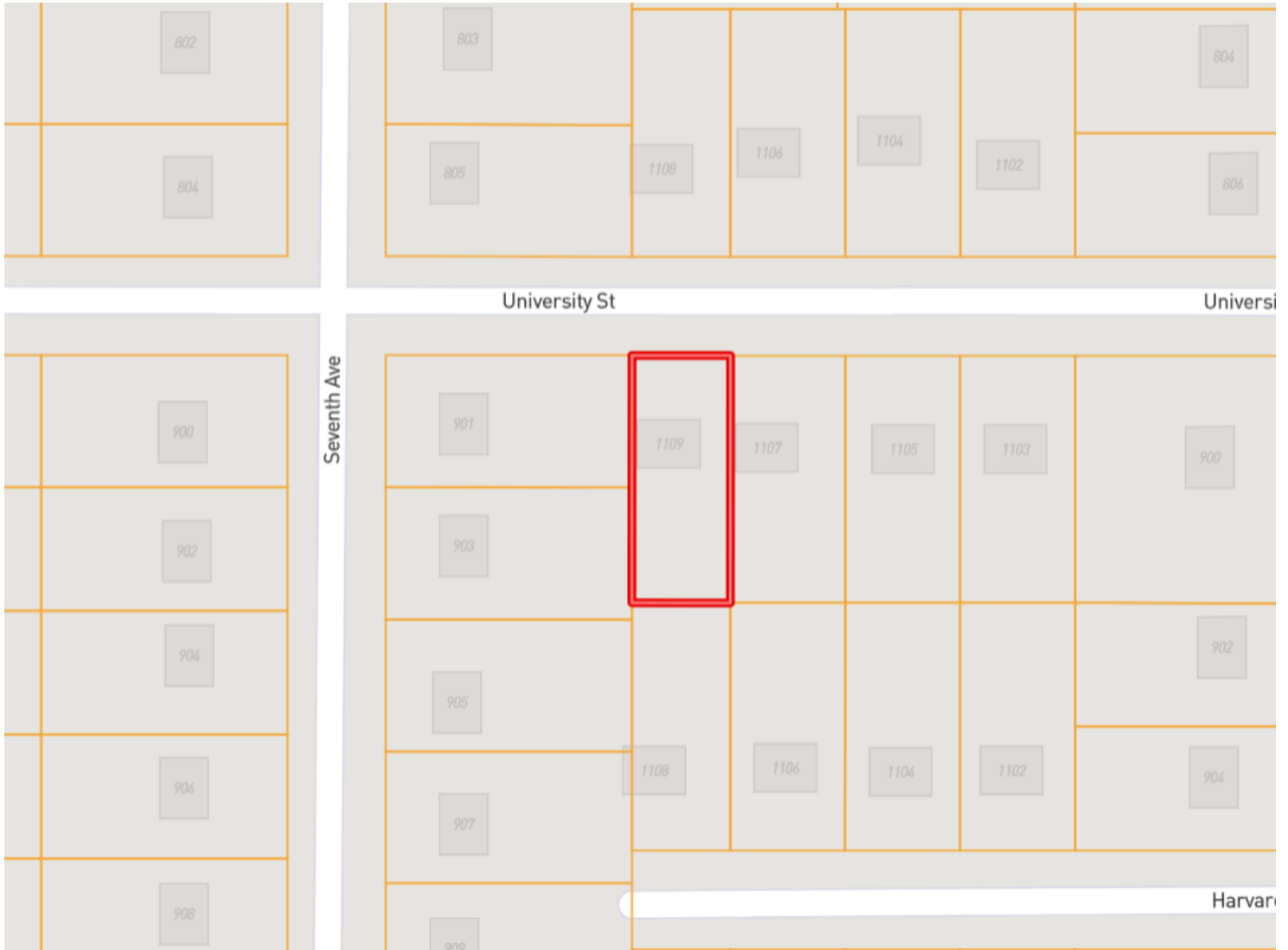
**TRACEY BELL**, MANAGING BROKER  
Tracey@TomSmithLand.com  
662.441.2500 **office** | 662.719.4720 **cell**



**TomSmithLandandHomes.com**

Information is believed to be accurate but not guaranteed.

# OWNERSHIP MAP



*Call me today!*

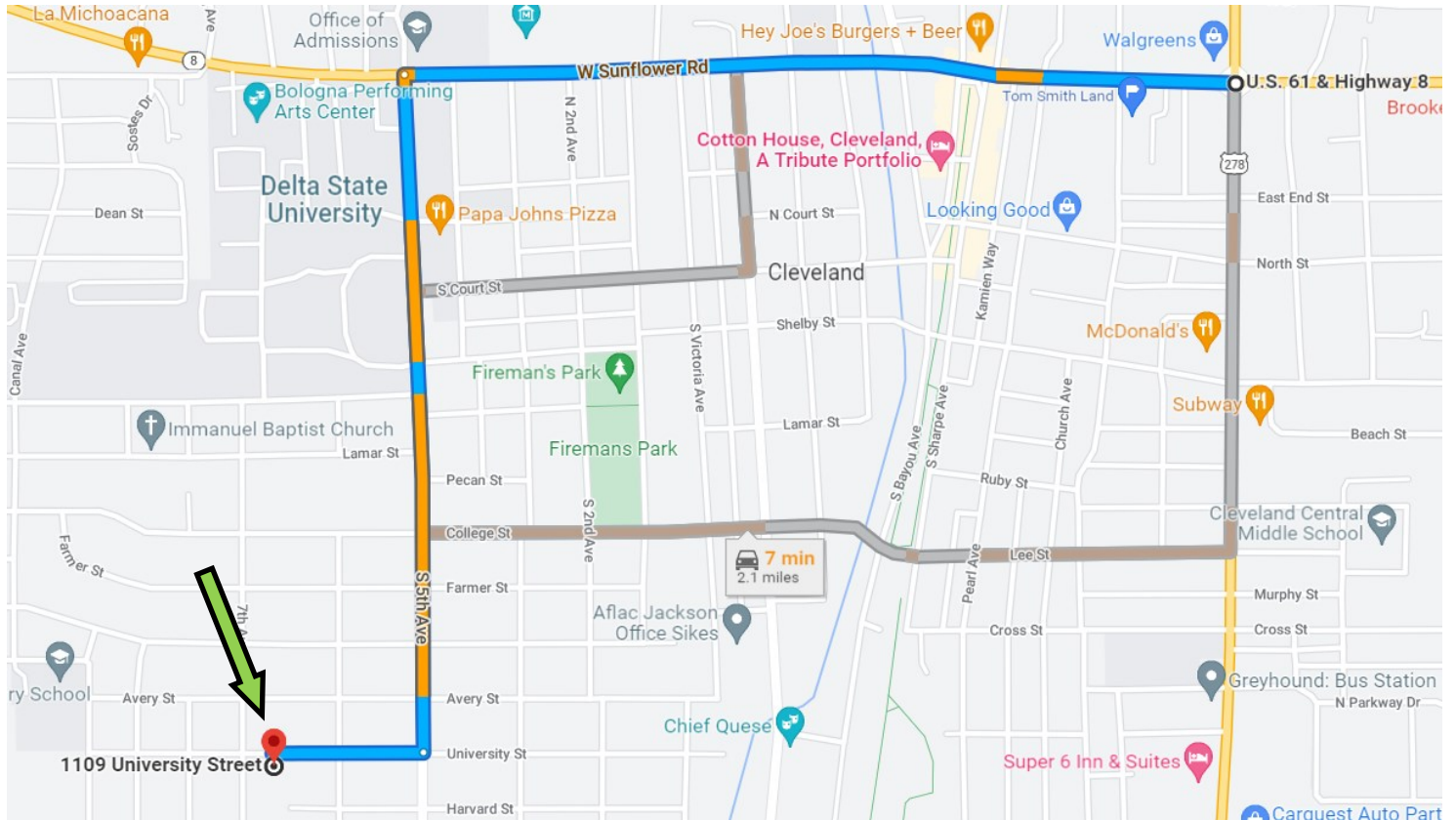
**TRACEY BELL**, MANAGING BROKER  
Tracey@TomSmithLand.com  
662.441.2500 **office** | 662.719.4720 **cell**



**TomSmithLandandHomes.com**

Information is believed to be accurate but not guaranteed.

# DIRECTIONAL MAP



**Address: 1109 University St. Cleveland, MS 38732**

**Directions from the intersection of Hwy 61 and Hwy 8 in Cleveland, MS:** Travel West on Hwy 8 towards N. Chrisman Ave, in 1.0 miles turn left onto N. 5th Ave. In 0.8 miles turn right onto University Street and in 0.2 miles the destination will be on the left. **Click for Google Map Directions.**



*Call me today!*

**TRACEY BELL**, MANAGING BROKER  
Tracey@TomSmithLand.com  
662.441.2500 **office** | 662.719.4720 **cell**



**TomSmithLandandHomes.com**

Information is believed to be accurate but not guaranteed.