

Bolivar County Fixer Upper

305 South Bolivar Avenue, Cleveland, MS 38732



Welcome to your new fixer-upper in Cleveland, MS! This 1,820 SF, three bed, and three bath Bolivar County home is ready for new owners. This home would be the perfect rental home for college students with Delta State only 4 minutes away. Call Bruce at 662-873-3007 or 662-441-2500 to schedule your private showing today!

Directions from the Intersection of Hwy 61 and Hwy 8 in Cleveland, MS: Travel Hwy 8/E Sunflower Rd. for .5 miles. Turn left on North Bolivar Avenue, after .5 miles the home will be on your left.

Click for Directions: [305 S Bolivar Avenue, Cleveland, MS 38732](#)



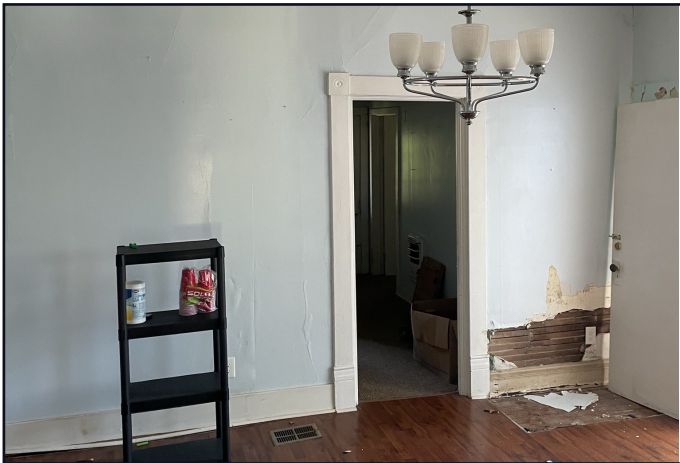
Call me today!

BRUCE WEST, REALTOR®
Bruce@TomSmithLand.com
662.441.2500 office | 662.873.3007 cell



TomSmithLandandHomes.com

Information is believed to be accurate but not guaranteed.



Call me today!

BRUCE WEST, REALTOR*
Bruce@TomSmithLand.com
662.441.2500 office | 662.873.3007 cell



TomSmithLandandHomes.com

Information is believed to be accurate but not guaranteed.



Call me today!

BRUCE WEST, REALTOR®
Bruce@TomSmithLand.com
662.441.2500 **office** | 662.873.3007 **cell**



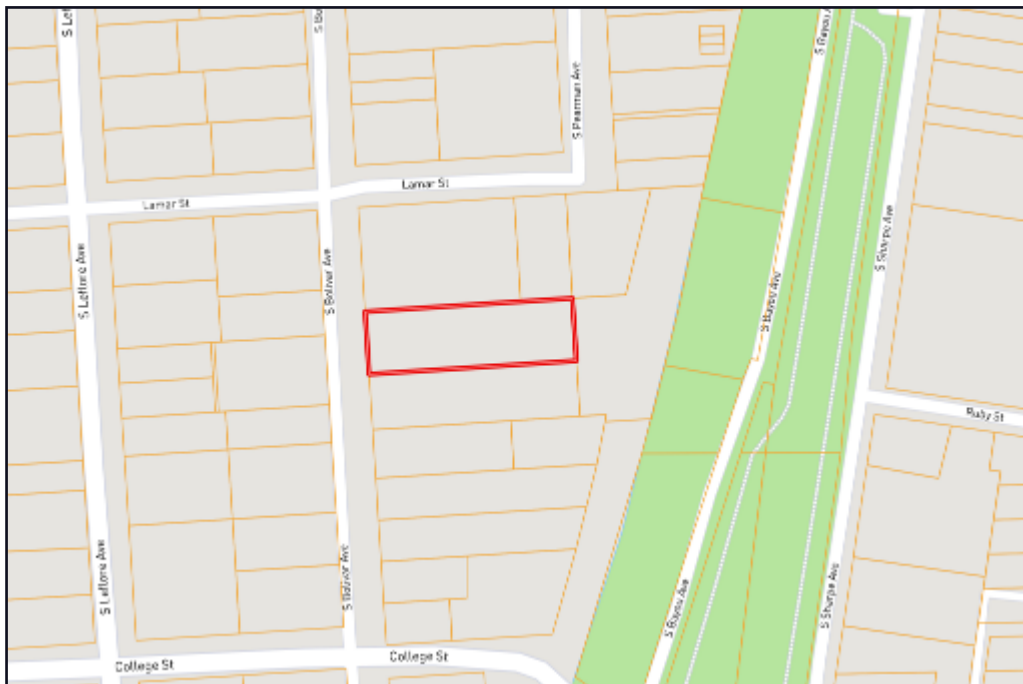
Expect More. Get More.



TomSmithLandandHomes.com

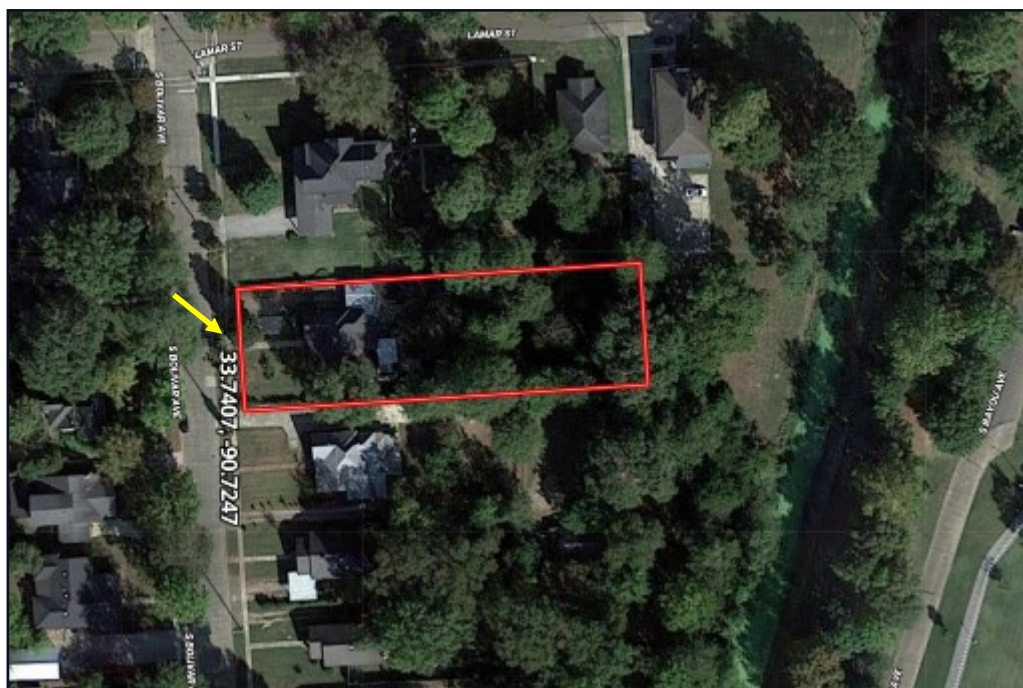
Information is believed to be accurate but not guaranteed.

OWNERSHIP MAP



[Click Here for
an Interactive
Map](#)

AERIAL MAP



Call me today!

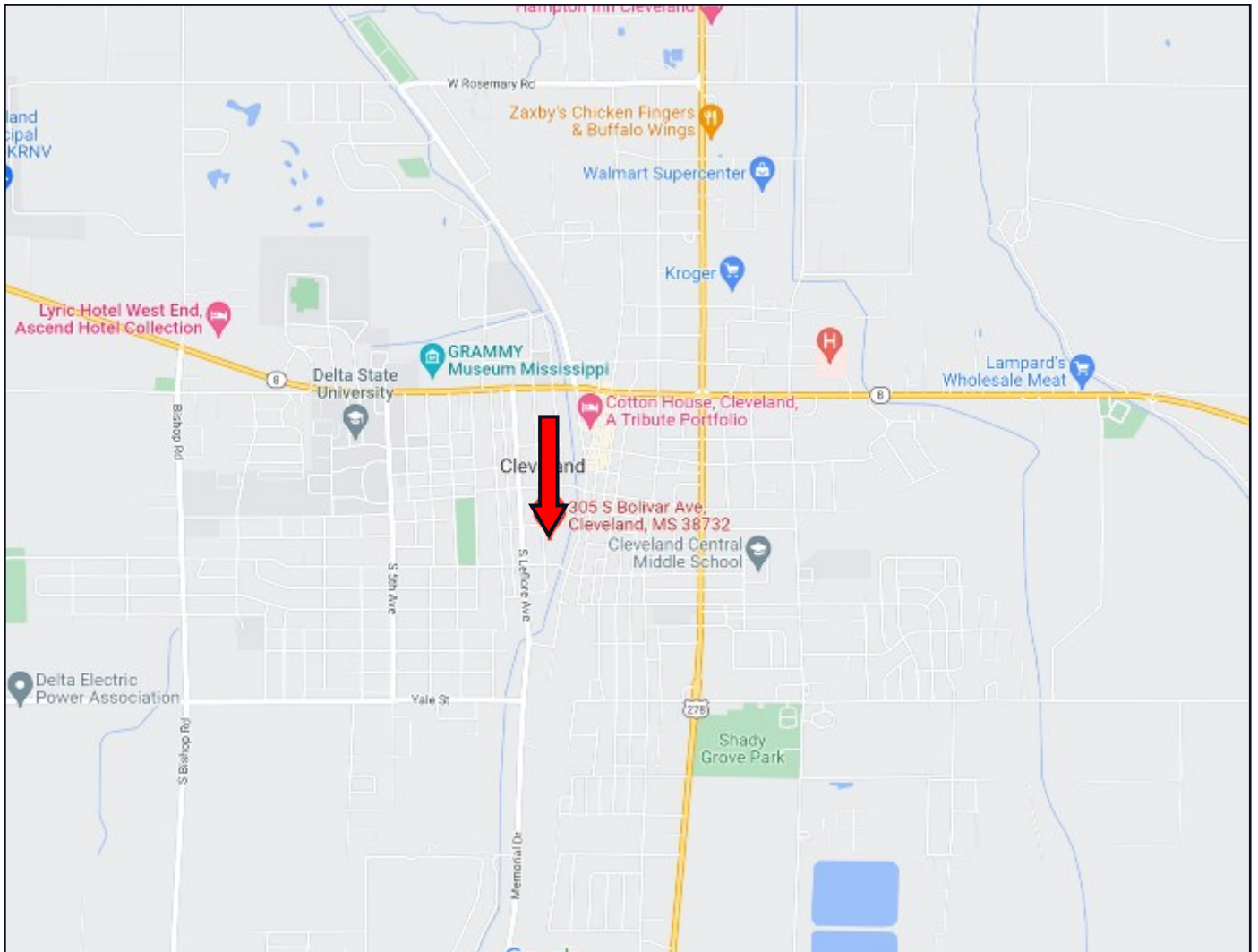
BRUCE WEST, REALTOR[®]
Bruce@TomSmithLand.com
662.441.2500 **office** | 662.873.3007 **cell**



TomSmithLandandHomes.com

Information is believed to be accurate but not guaranteed.

DIRECTIONAL MAP



Directions from the Intersection of Hwy 61 and Hwy 8 in Cleveland, MS: Travel Hwy 8/E Sunflower Rd. for .5 miles. Turn left on North Bolivar Avenue, after .5 miles the home will be on your left.

Click for Directions: [305 S Bolivar Avenue, Cleveland, MS 38732](#)



Call me today!

BRUCE WEST, REALTOR®
Bruce@TomSmithLand.com
662.441.2500 office | 662.873.3007 cell



TomSmithLandandHomes.com

Information is believed to be accurate but not guaranteed.