

Home on 0.45+/- Acres Hancock County, MS



4013 Caribbean Street Bay St. Louis, MS 39520

Take a look at this property in Hancock County, MS. This is the perfect location in Bay St Louis, near the Mississippi Gulf Coast, with nearby fishing, shopping, dining, festivals, casinos, beaches, and boating! This 975 sq ft, three bedroom, one bathroom home, on 0.45+/- acres, would be a great place to get away with your family! The seller has started replacing flooring. The property features an approximately 20 X 20 storage room, a large covered outdoor space for entertaining, and an approximately 10 X 10 metal storage shed. There is also a 24x36 metal shop installed professionally in 2020 that would make the perfect place to store your boat and fishing gear. Call Tara today to schedule a viewing!

Directions from US-90E and N Beach Blvd in Bay St Louis, MS: Travel west on US90, in 2.4 miles, take a slight right onto Longfellow Drive. In 1.3 miles, turn right onto MS-43N. In .5 miles, turn left onto 1st Ave. In .1 miles, turn left to stay on 1st Avenue. In .2 miles, turn right onto Caribbean Street, and in 138 feet, the property will be on the left. Address: 4013 Caribbean Street Bay St. Louis, MS 39520



LandReport
2011-2022
AMERICA'S
BEST
BROKERAGES

Call me today!

TARA WALKER SMITH, REALTOR®
Tara@TomSmithHomes.com
601.990.5070 office | 601.407.4315 cell



TomSmithLandandHomes.com

Information is believed to be accurate but not guaranteed.



Call me today!

TARA WALKER SMITH, REALTOR®
Tara@TomSmithHomes.com
601.990.5070 office | 601.407.4315 cell



Expect More. Get More.

TomSmithLandandHomes.com

Information is believed to be accurate but not guaranteed.



Call me today!

TARA WALKER SMITH, REALTOR®
Tara@TomSmithHomes.com
601.990.5070 office | 601.407.4315 cell



Expect More. Get More.

TomSmithLandandHomes.com

Information is believed to be accurate but not guaranteed.



Call me today!

TARA WALKER SMITH, REALTOR®
Tara@TomSmithHomes.com
601.990.5070 office | 601.407.4315 cell



Expect More. Get More.

TomSmithLandandHomes.com

Information is believed to be accurate but not guaranteed.



Call me today!

TARA WALKER SMITH, REALTOR®
Tara@TomSmithHomes.com
601.990.5070 office | 601.407.4315 cell

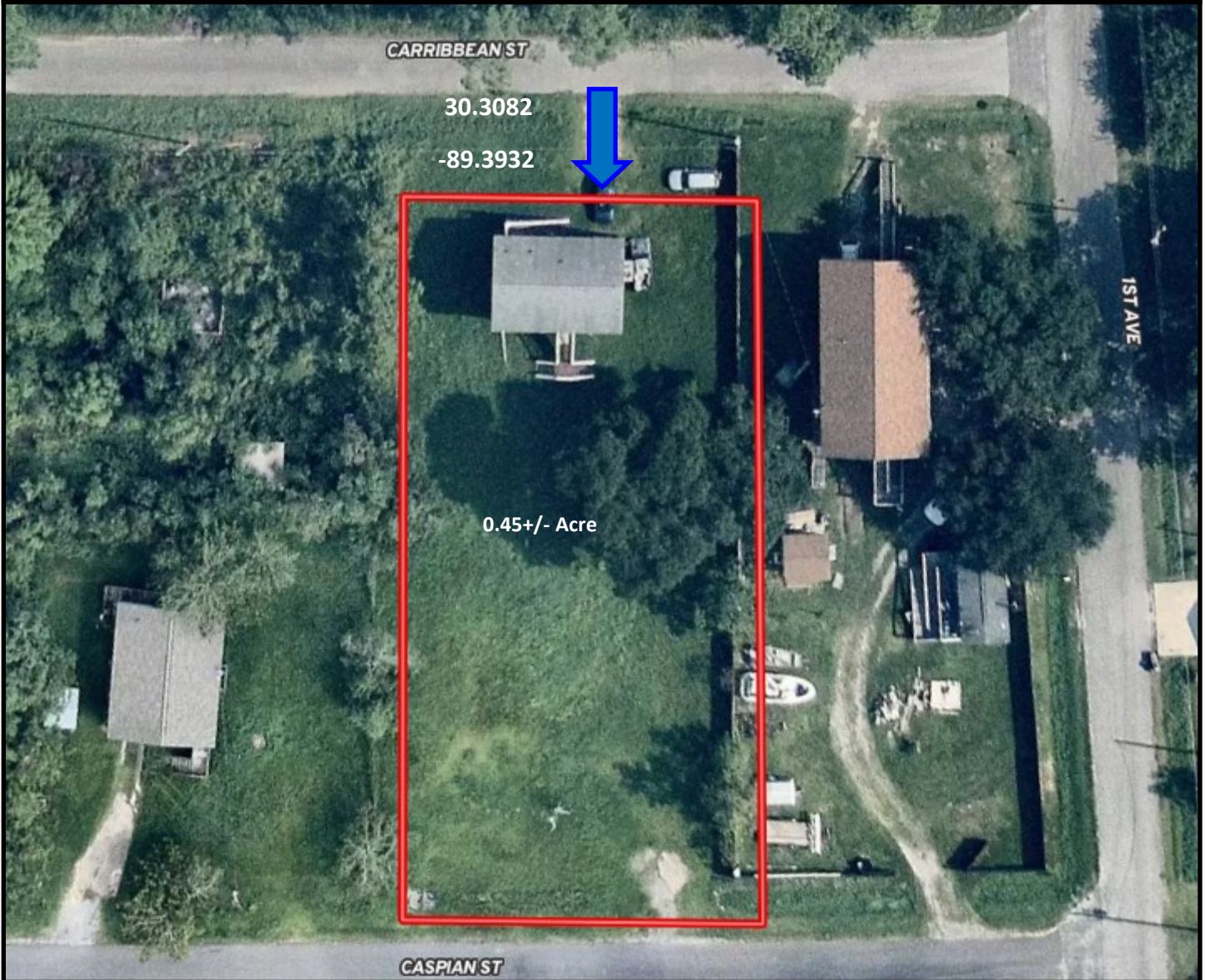


Expect More. Get More.

TomSmithLandandHomes.com

Information is believed to be accurate but not guaranteed.

Aerial Map



[Click for Interactive Map](#)



Call me today!

TARA WALKER SMITH, REALTOR®
Tara@TomSmithHomes.com
601.990.5070 **office** | 601.407.4315 **cell**

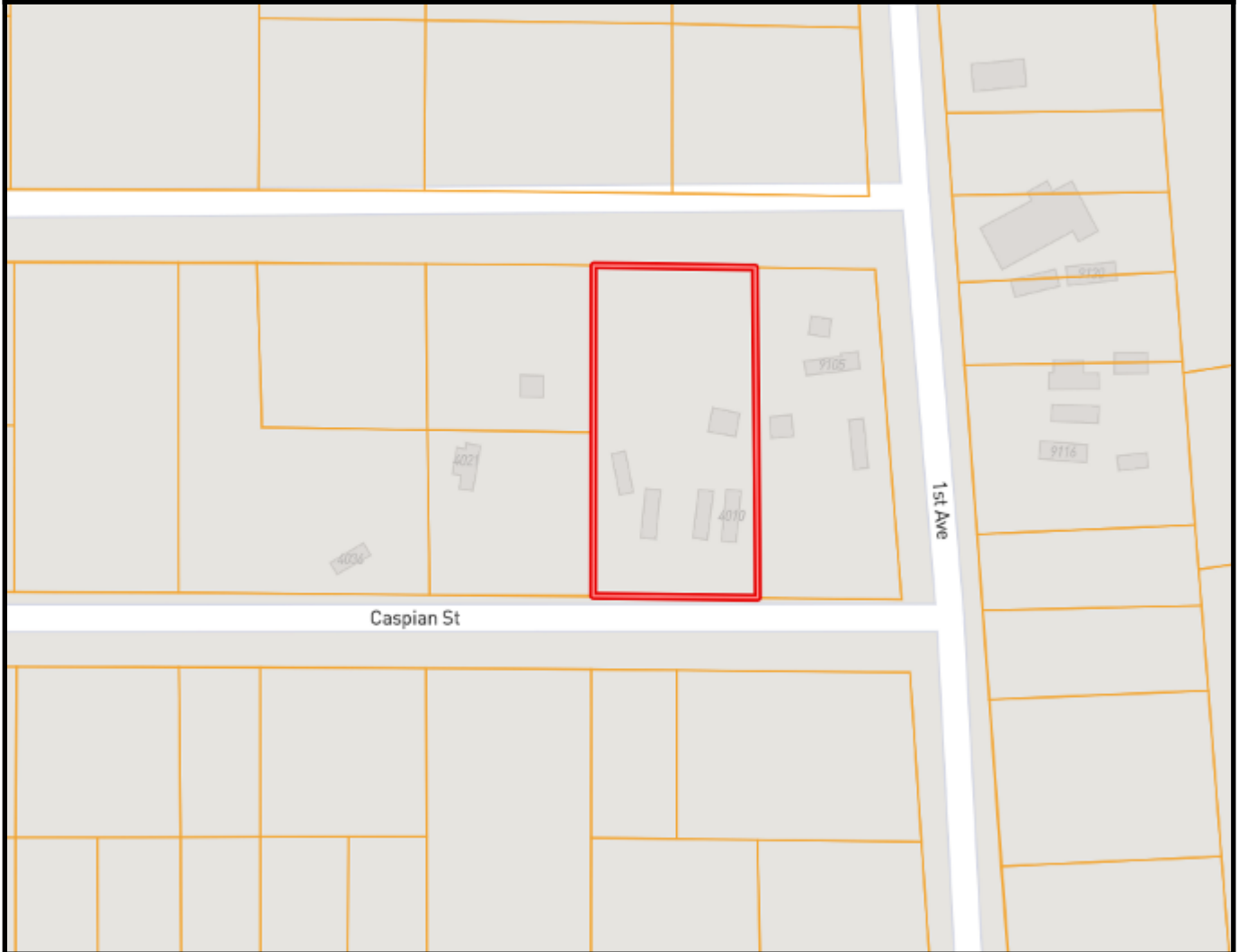


Expect More. Get More.

TomSmithLandandHomes.com

Information is believed to be accurate but not guaranteed.

Ownership Map



Call me today!

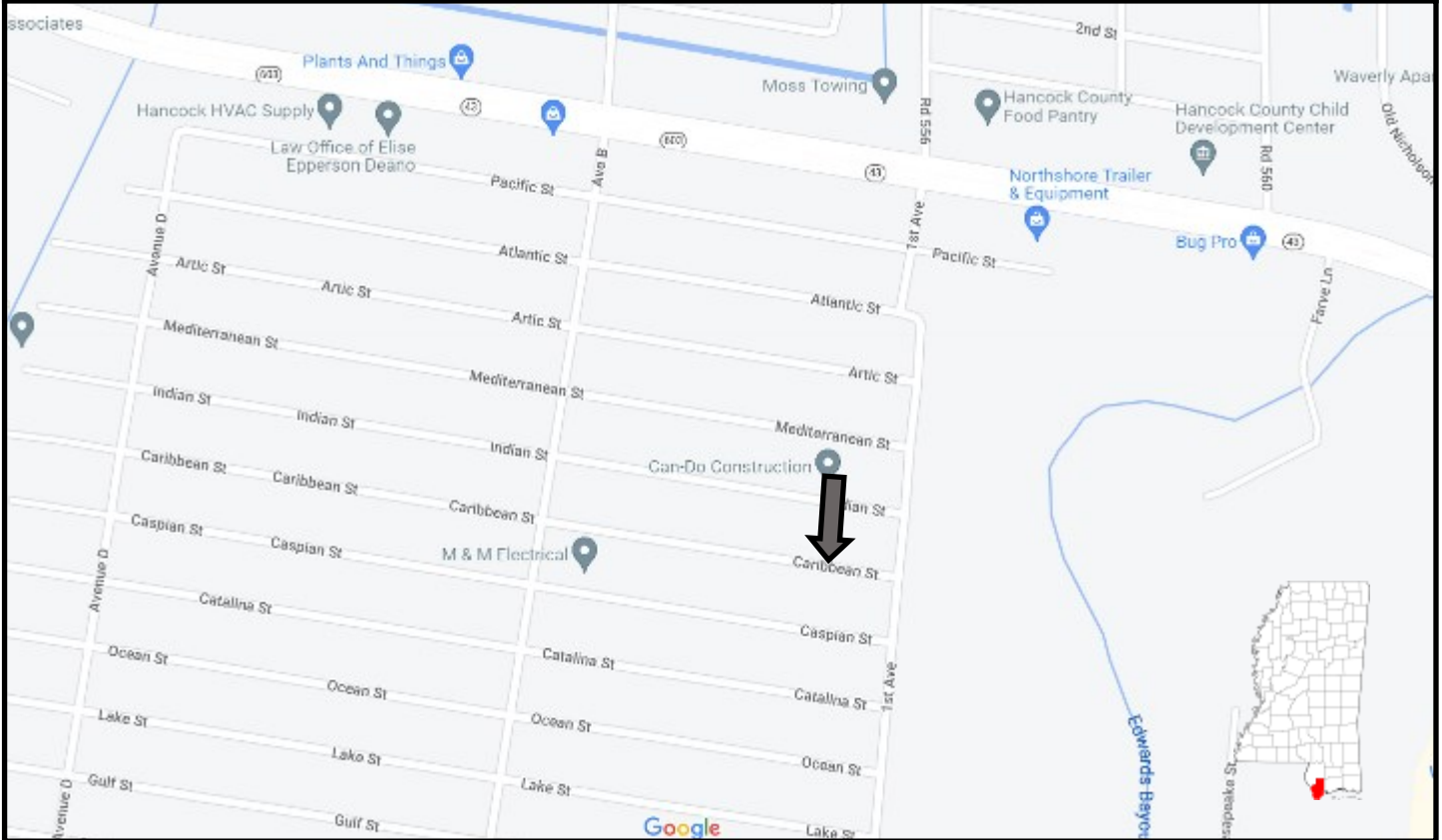
TARA WALKER SMITH, REALTOR®
Tara@TomSmithHomes.com
601.990.5070 office | 601.407.4315 cell



TomSmithLandandHomes.com

Information is believed to be accurate but not guaranteed.

Directional Map



Directions from US-90E and N Beach Blvd in Bay St Louis, MS: Travel west on US90, in 2.4 miles, take a slight right onto Longfellow Drive. In 1.3 miles, turn right onto MS-43N. In .5 miles, turn left onto 1st Ave. In .1 miles, turn left to stay on 1st Avenue. In .2 miles, turn right onto Caribbean Street, and in 138 feet, the property will be on the left. Address: 4013 Caribbean Street Bay St. Louis, MS 39520

[Click for Google Map](#)



Call me today!

TARA WALKER SMITH, REALTOR®
Tara@TomSmithHomes.com
601.990.5070 office | 601.407.4315 cell



Expect More. Get More.

TomSmithLandandHomes.com

Information is believed to be accurate but not guaranteed.