

30± ACRES OF MISSISSIPPI HARDWOOD SWAMP BOTTOM PEARL RIVER COUNTY, MS



\$132,000

Check out this fantastic 30± acre hunting property in Pearl River County, MS! This property is an excellent spot for all types of hunters. The Cyprus brakes make for some excellent duck hunting. The many large mature hardwoods make this property an excellent environment for deer and hog hunting. The boggy bottoms and plentiful hardwoods make this an excellent small game hunting property. There are two potential campsites to build on. This property is located less than an hour and a half from New Orleans and Hammond, LA! Call Preston Smith, Cell: 601.209.7150 or Office: 601.990.5070, for a private showing!

Directions from the intersection of LA-21 and LA-10 in Bogalusa, LA: Travel east on LA-10, in 1.7 miles, continue onto MS-26E, in 2.9 miles, turn left onto MS-43N, in 2.1 miles, turn left onto Wheatfield Rd, in .3 miles, the property will be on the right.

[GOOGLE MAP LINK](#)

Call me today!

PRESTON SMITH, MANAGING BROKER
Preston@TomSmithLand.com
601.990.5070 **office** | 601.209.7150 **cell**



TomSmithLandandHomes.com

Information is believed to be accurate but not guaranteed.



Call me today!

PRESTON SMITH, MANAGING BROKER
Preston@TomSmithLand.com
601.990.5070 office | 601.209.7150 cell

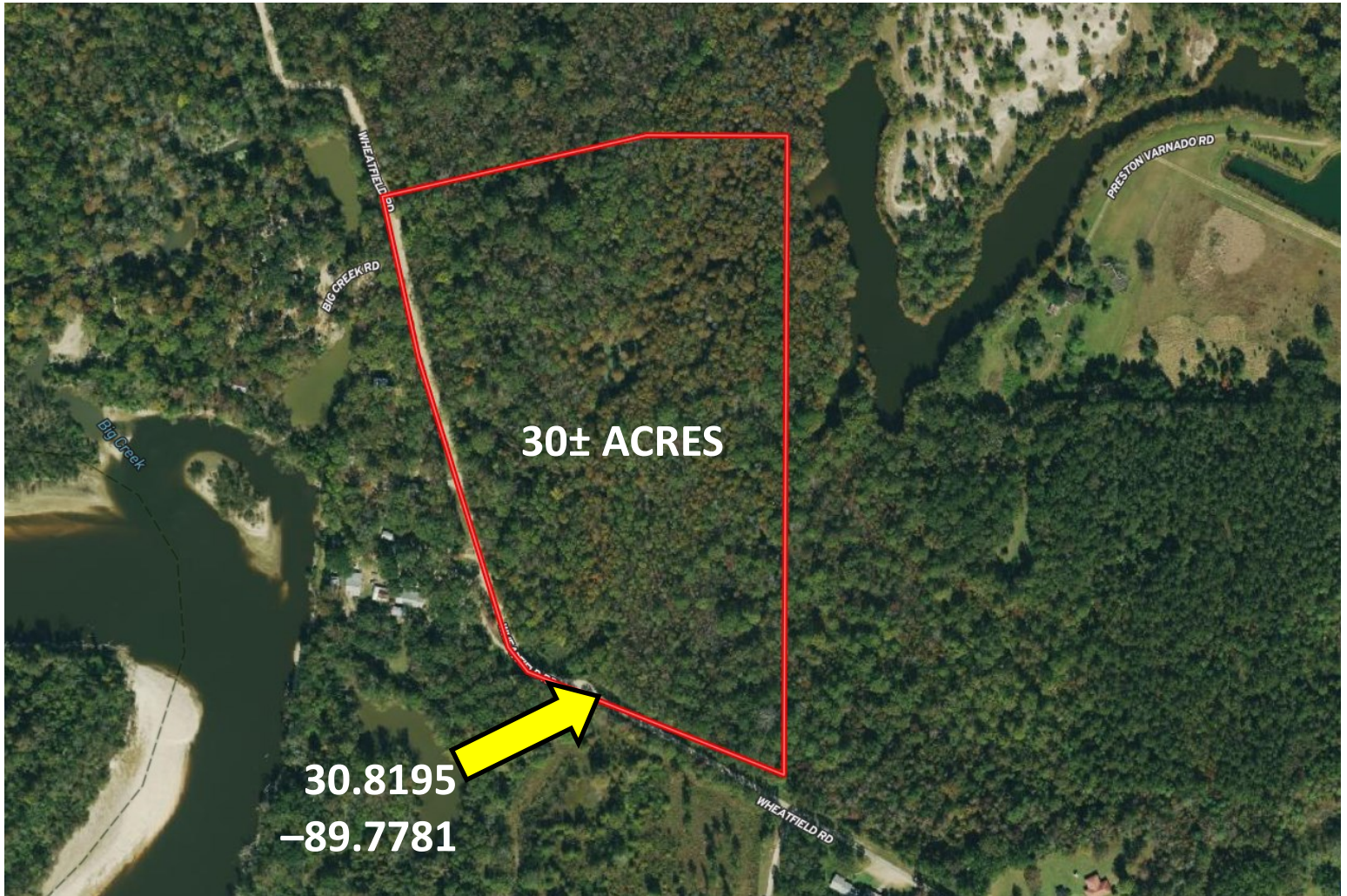


Expect More. Get More.

TomSmithLandandHomes.com

Information is believed to be accurate but not guaranteed.

Aerial Map



[INTERACTIVE MAP LINK](#)

Call me today!

PRESTON SMITH, MANAGING BROKER
Preston@TomSmithLand.com
601.990.5070 office | 601.209.7150 cell

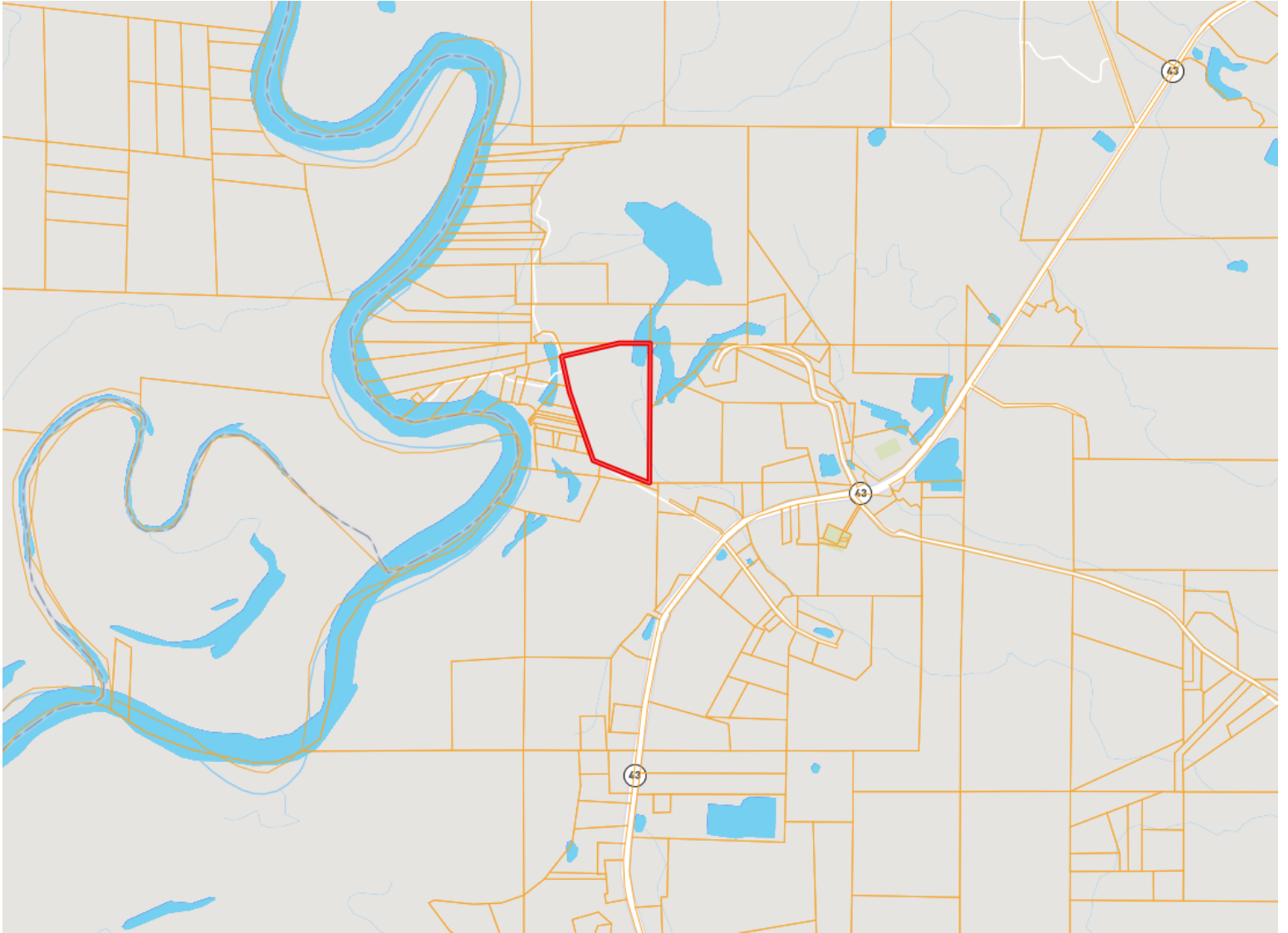


Expect More. Get More.

TomSmithLandandHomes.com

Information is believed to be accurate but not guaranteed.

Ownership Map



Call me today!

PRESTON SMITH, MANAGING BROKER
Preston@TomSmithLand.com
601.990.5070 office | 601.209.7150 cell

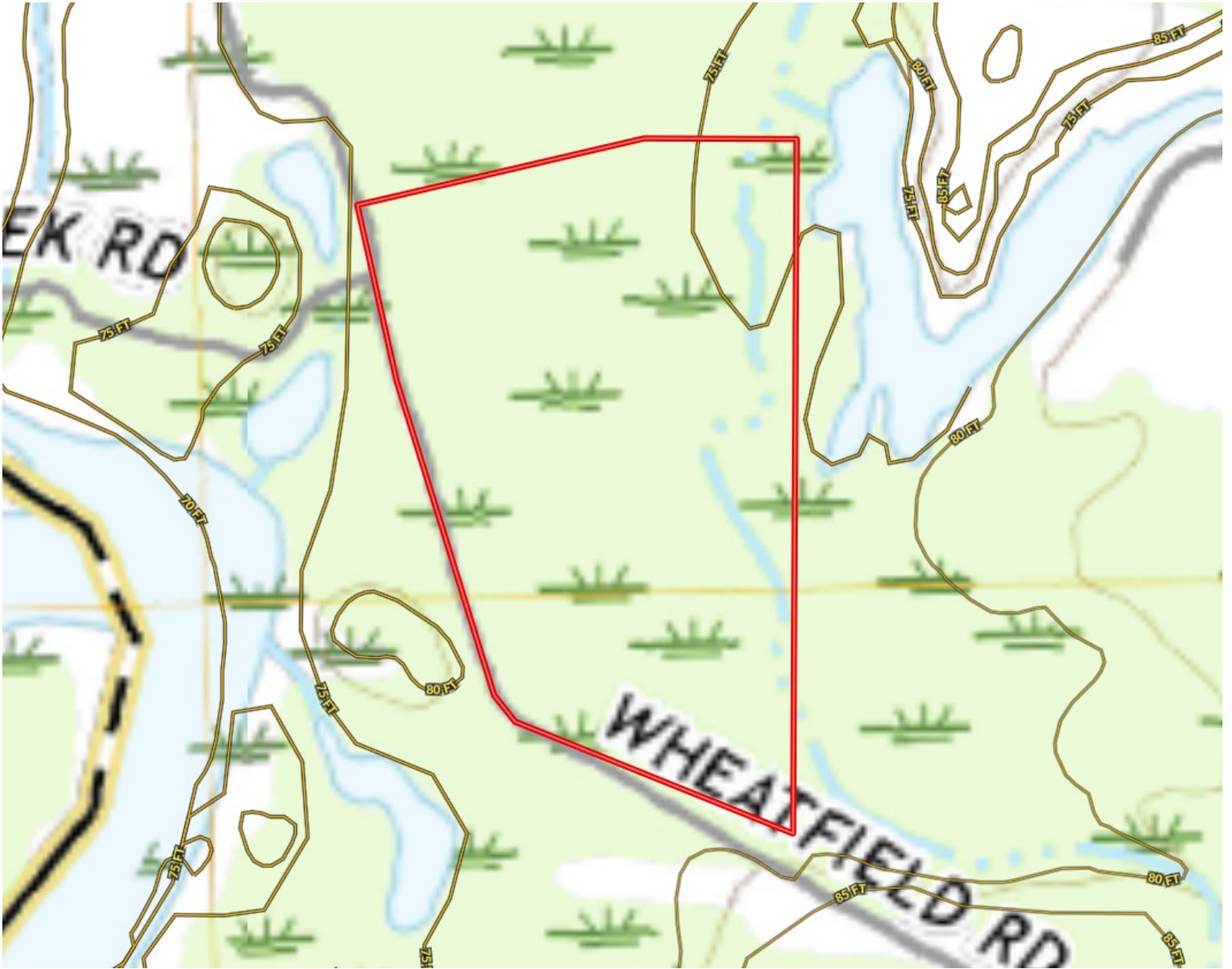


Expect More. Get More.

TomSmithLandandHomes.com

Information is believed to be accurate but not guaranteed.

Topography Map



Call me today!

PRESTON SMITH, MANAGING BROKER
Preston@TomSmithLand.com
601.990.5070 office | 601.209.7150 cell

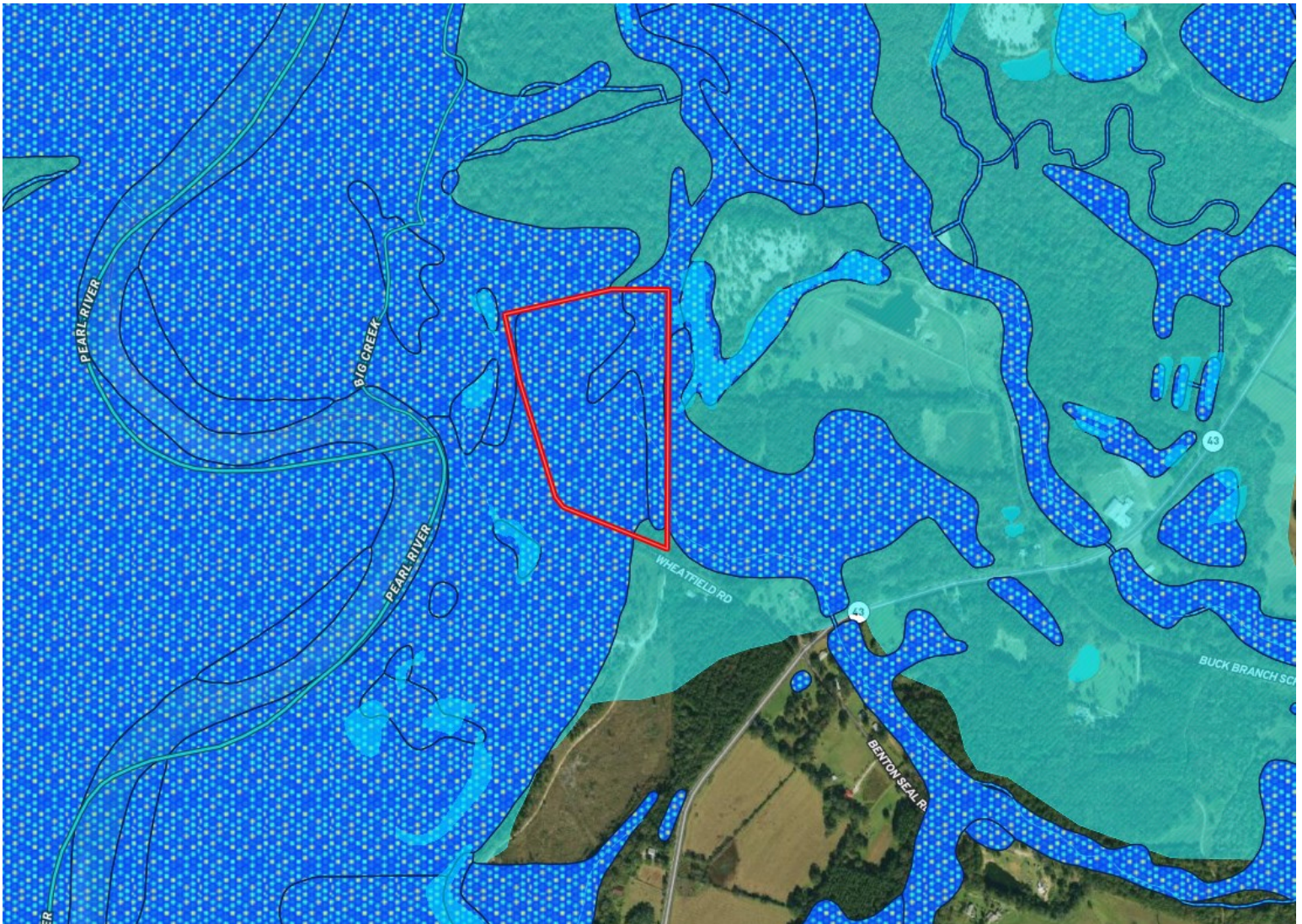


Expect More. Get More.

TomSmithLandandHomes.com

Information is believed to be accurate but not guaranteed.

Flood Map



Call me today!

PRESTON SMITH, MANAGING BROKER
Preston@TomSmithLand.com
601.990.5070 office | 601.209.7150 cell



Expect More. Get More.

TomSmithLandandHomes.com

Information is believed to be accurate but not guaranteed.

Soil Map



Call me today!

PRESTON SMITH, MANAGING BROKER
 Preston@TomSmithLand.com
 601.990.5070 office | 601.209.7150 cell



TomSmithLandandHomes.com

Information is believed to be accurate but not guaranteed.

Directional Map



GOOGLE MAP LINK

Directions from the intersection of LA-21 and LA-10 in Bogalusa, LA: Travel east on LA-10, in 1.7 miles, continue onto MS-26E, in 2.9 miles, turn left onto MS-43N, in 2.1 miles, turn left onto Wheatfield Rd, in .3 miles, the property will be on the right.

Call me today!

PRESTON SMITH, MANAGING BROKER
Preston@TomSmithLand.com
601.990.5070 **office** | 601.209.7150 **cell**



Expect More. Get More.

TomSmithLandandHomes.com

Information is believed to be accurate but not guaranteed.