

# 10 +/- Acre Home Site Lincoln County, MS



Agent Owned

\$59,900

## 00 Maple Ln, Summit MS 39666

Have you been looking for the perfect place to build your dream home? Check out this 10+/- acres in Lincoln County MS, in the highly desired Bogue Chitto School District. A homesite is cleared and set approximately 750 ft off Maple Lane nestled on a hill with wide drive and a large culvert that will lead you straight to where your future home could be. A fresh mulched fire lane runs the entire North side of the property and ties into the homesite on not only on north side as well as the south. This parcel is conveniently located just a couple of minutes north of the Dixie Springs exit on Interstate 55. Call Blake Sasser today to view this property!

Directions from Interstate 55 at the Dixie Springs Exit 24: Travel west on Pike County Line Road for 500 feet.

Take a right onto Maple Ln. In 1.6 miles the property will be on your left.

[GOOGLE MAP LINK](#)



*Call me today!*

**BLAKE SASSER, REALTOR\***  
Blake@TomSmithLand.com  
601.990.5070 office | 601.757.5027 cell



[TomSmithLandandHomes.com](http://TomSmithLandandHomes.com)





*Call me today!*

**BLAKE SASSER**, REALTOR®  
Blake@TomSmithLand.com  
601.990.5070 **office** | 601.757.5027 **cell**



**TomSmithLandandHomes.com**

Information is believed to be accurate but not guaranteed.



# Aerial Map



Click [here](#) for an interactive map link.

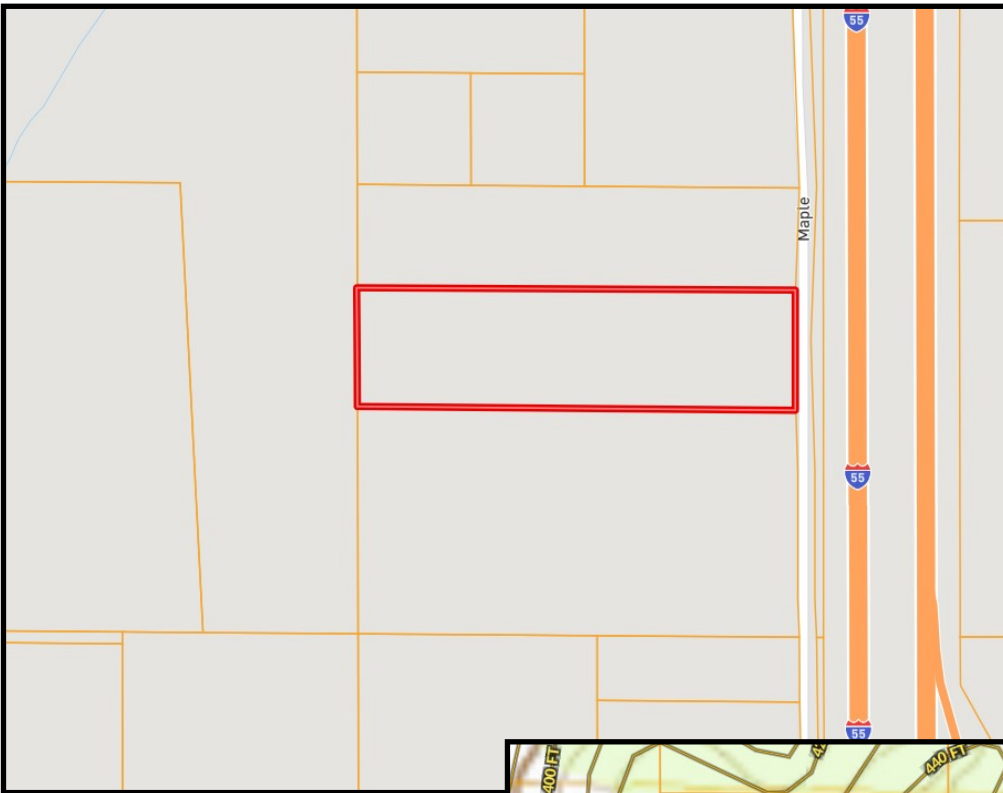
*Call me today!*

**BLAKE SASSER**, REALTOR®  
Blake@TomSmithLand.com  
601.990.5070 **office** | 601.757.5027 **cell**

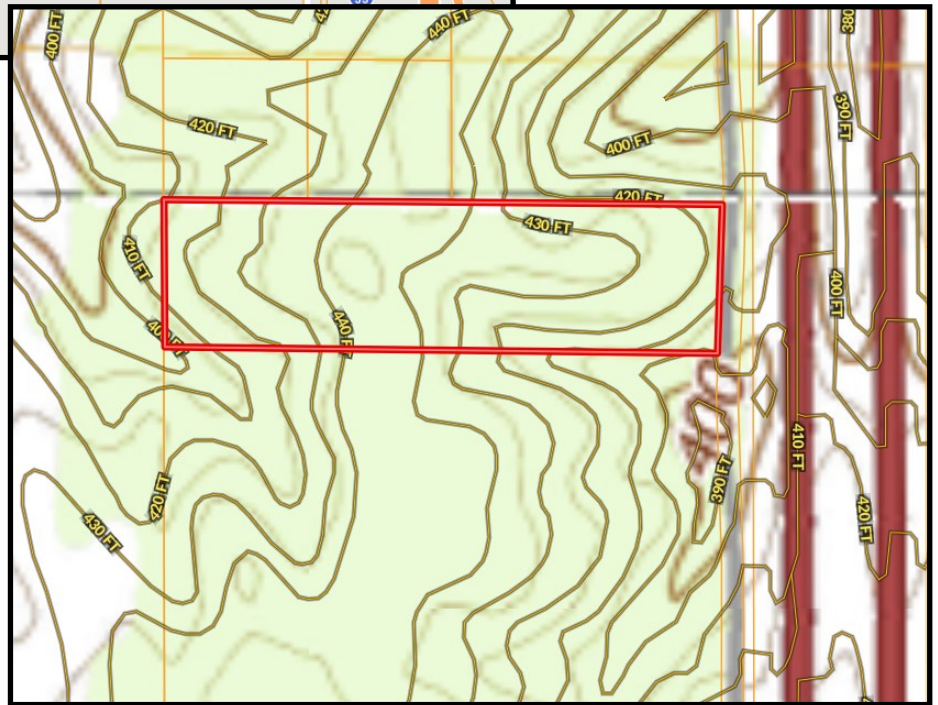


**TomSmithLandandHomes.com**

Information is believed to be accurate but not guaranteed.



Ownership  
Map



Topo  
Map

*Call me today!*

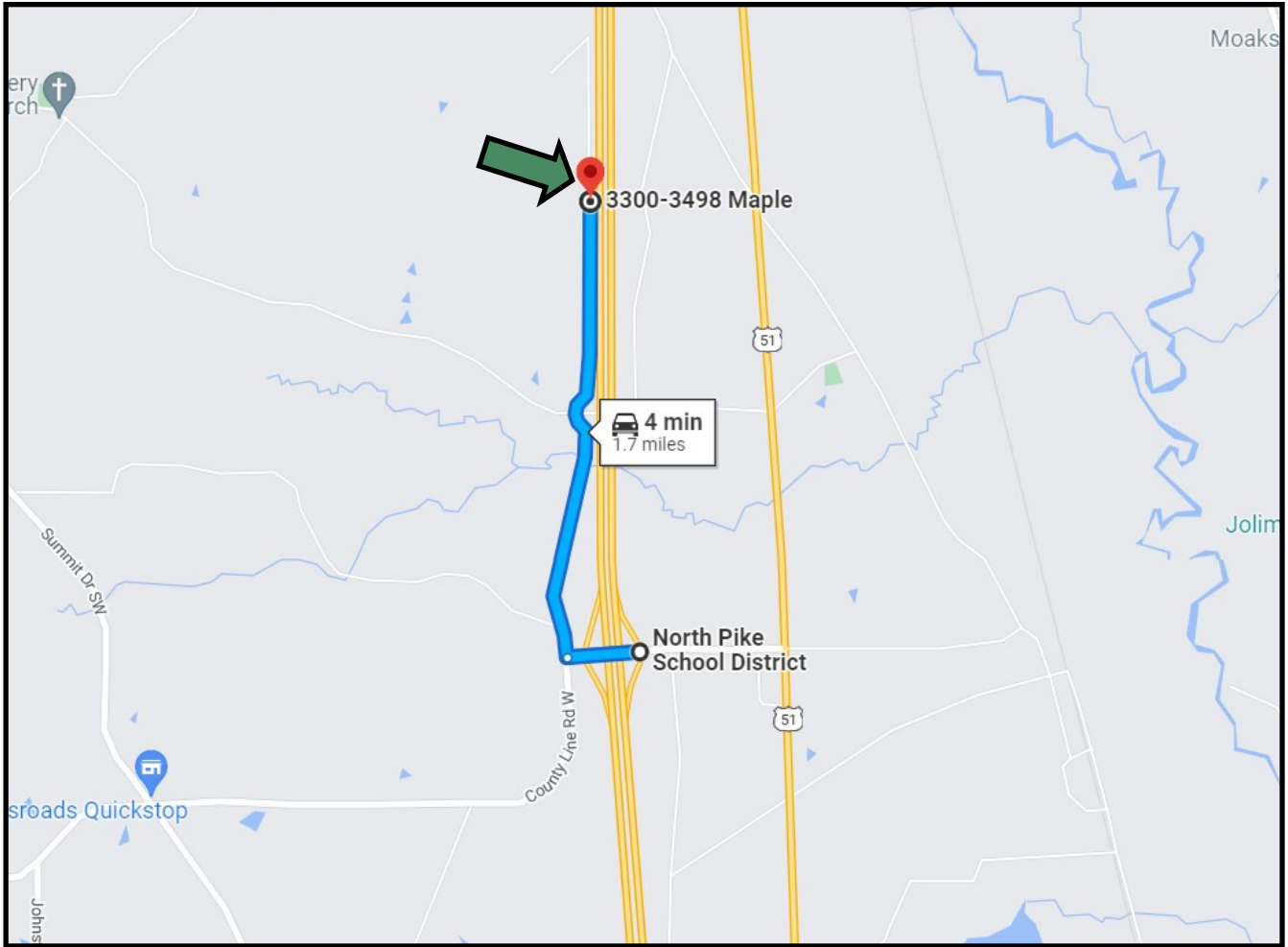
**BLAKE SASSER**, REALTOR®  
Blake@TomSmithLand.com  
601.990.5070 office | 601.757.5027 cell



**TomSmithLandandHomes.com**

Information is believed to be accurate but not guaranteed.





## Directional Map

Address : 00 Maple Ln, Summit MS 39666

[GOOGLE MAP LINK](#)

*Call me today!*

**BLAKE SASSER**, REALTOR®  
Blake@TomSmithLand.com  
601.990.5070 **office** | 601.757.5027 **cell**



[TomSmithLandandHomes.com](http://TomSmithLandandHomes.com)

Information is believed to be accurate but not guaranteed.