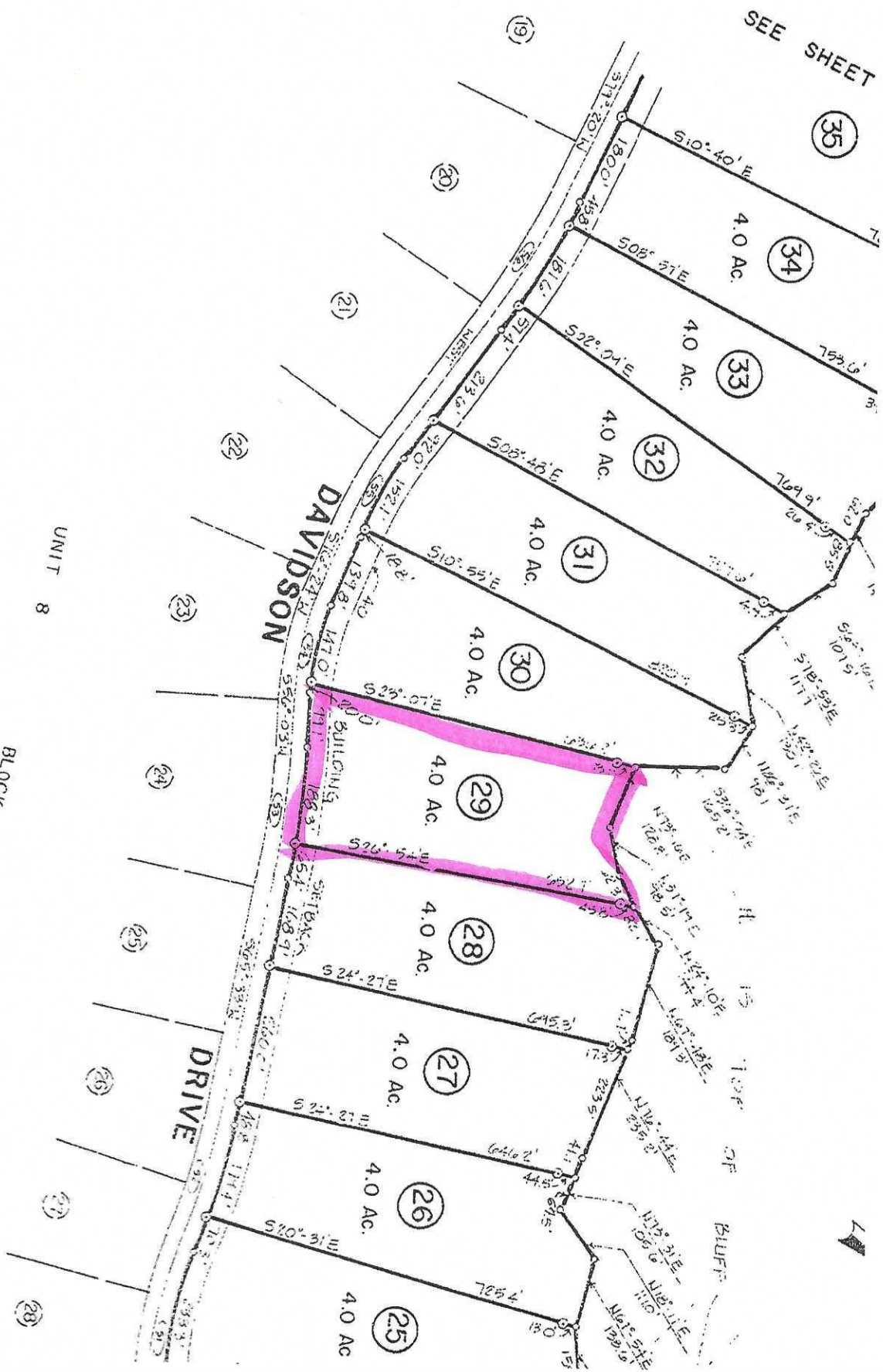


SEE SHEET



**CERTIFICATE OF APPROVAL**  
**PUTNAM COUNTY HEALTH DEPARTMENT**

Approval is hereby granted for tracts hereon as being suitable for subsurface sewage disposal and of adequate size for well water supply as required by the Tennessee Department of Health and Environment before the initiation of construction, the location of well, house, and plans for the subsurface sewage disposal system shall be approved by the local health authority.

**CERTIFICATE OF APPROVAL FOR RECORDING**

I hereby certify that the subdivision plat shown hereon has been found to comply with the subdivision standards for Putnam County, Tennessee, with the exception of such variances, if any, as are noted in the minutes of the Planning Commission and that it has been approved for recording in the office of the County Register.

Q-10-d.

1-1.

1

0



**CERTIFICATE OF APPROVAL**  
**PUTNAM COUNTY HEALTH DEPARTMENT**

Approval is hereby granted for Tractors Hereon as being adequate for subsurface sewage disposal and as adequate site for well water supply as required by the Tennessee Department of Health and Environment before the initiation of construction, the location of well houses, and plans for the subsurface sewage disposal system shall be approved by the local health authority.

DATE: 8-18-66  
 BY: *Thomas O. Taylor*  
 PUTNAM COUNTY HEALTH DEPARTMENT

LEGEND  
 ○ ~ IRON PIN SET

MONROE MATKINS  
 ENGINEERING CO., INC.  
 BOX 575  
 ATHENS, TENNESSEE 37033

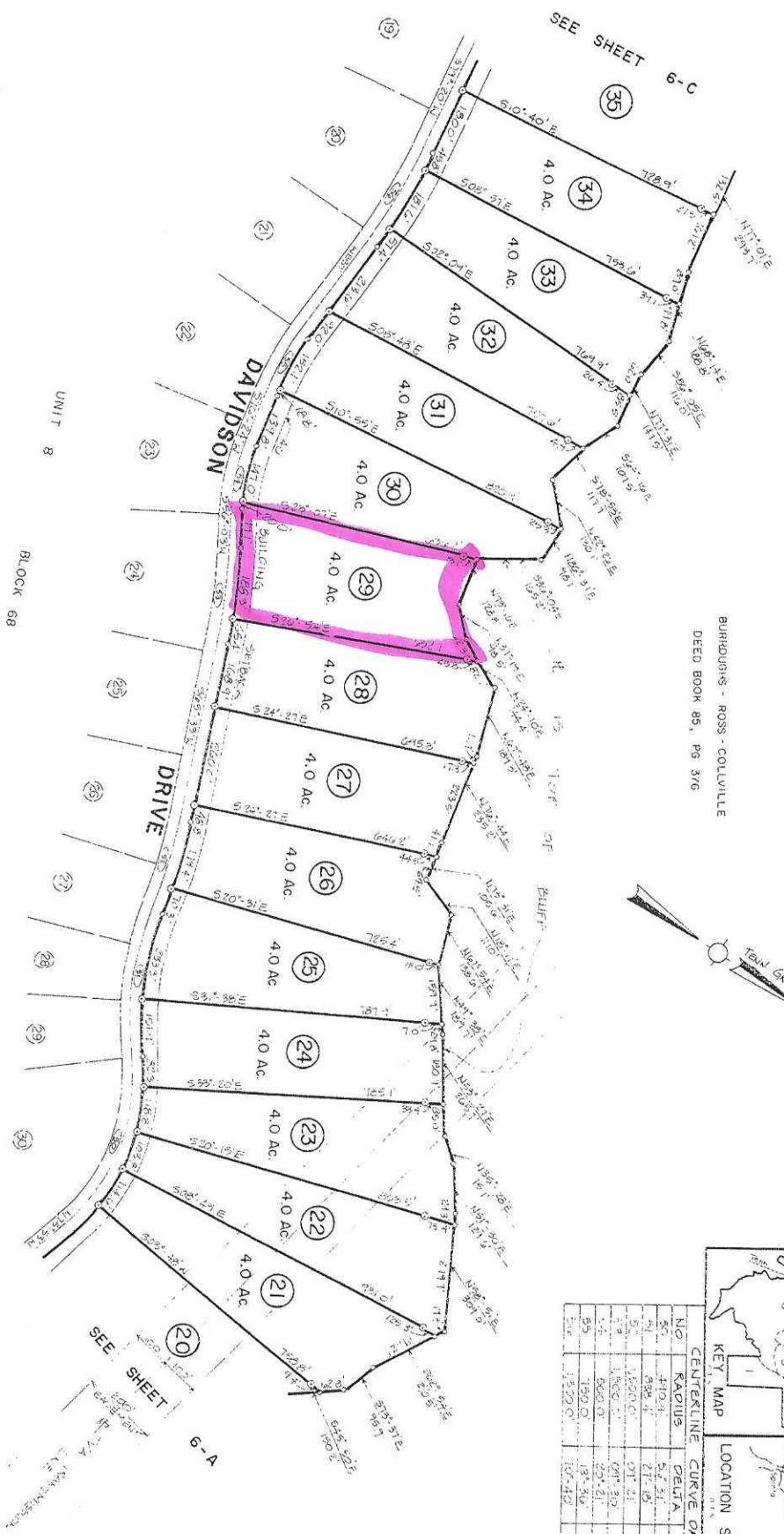
OWNER  
 GENERAL DEVELOPMENT CORP.  
 OF TENNESSEE  
 111 SOUTH BAYSHORE DRIVE  
 MIAMI, FLORIDA 33131

**CERTIFICATE OF APPROVAL FOR RECORDING**

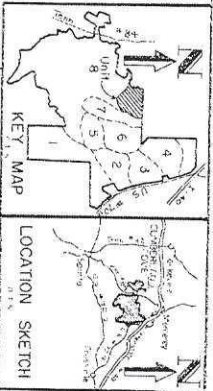
I HEREBY CERTIFY THAT THE SUBDIVISION PLAT SHOWN HEREON WAS FILED FOR PUBLIC RECORD WITH THE SUBDIVISION DIVISIONS FOR PUTNAM COUNTY, TENNESSEE, WITH THE EXCEPTION OF SUCH VARIANCES IF ANY AS ARE NOTED IN THE MARGINS OF THE PLANNING COMMISSION AND THAT IT HAS BEEN APPROVED FOR RECORDING IN THE OFFICE OF THE COUNTY REGISTER.

DATE: 8-18-66  
 BY: *W. H. ...*  
 SECRETARY PLANNING COMMISSION

SHEET 6-B TOTAL ACRES 56.0



NO.	RADIUS	DELTA	ARC
1	410.0'	27° 31'	483.7'
2	450.0'	27° 31'	519.5'
3	500.0'	27° 31'	574.6'
4	550.0'	27° 31'	629.7'
5	600.0'	27° 31'	684.8'
6	650.0'	27° 31'	739.9'
7	700.0'	27° 31'	795.0'
8	750.0'	27° 31'	850.1'
9	800.0'	27° 31'	905.2'
10	850.0'	27° 31'	960.3'



**CUMBERLAND COVE**

U.S. HWY. NO. 70 NORTH, FOURTH CIVIL DISTRICT, PUTNAM COUNTY, TENN.

UNIT 8 BLOCK 68  
 DATE: JULY 3, 1966  
 SHEET 6-B  
 DRAWING NO.: 81003-8-63-B