



Call me today!

TRAVIS SMITH, REALTOR®
Travis@TomSmithLand.com
601.898.2772 **office** | 601.600.0428 **cell**



Expect More. Get More.

TomSmithLandandHomes.com

Information is believed to be accurate but not guaranteed.



[CLICK HERE FOR AN INTERACTIVE MAP](#)

*Call me
today!*

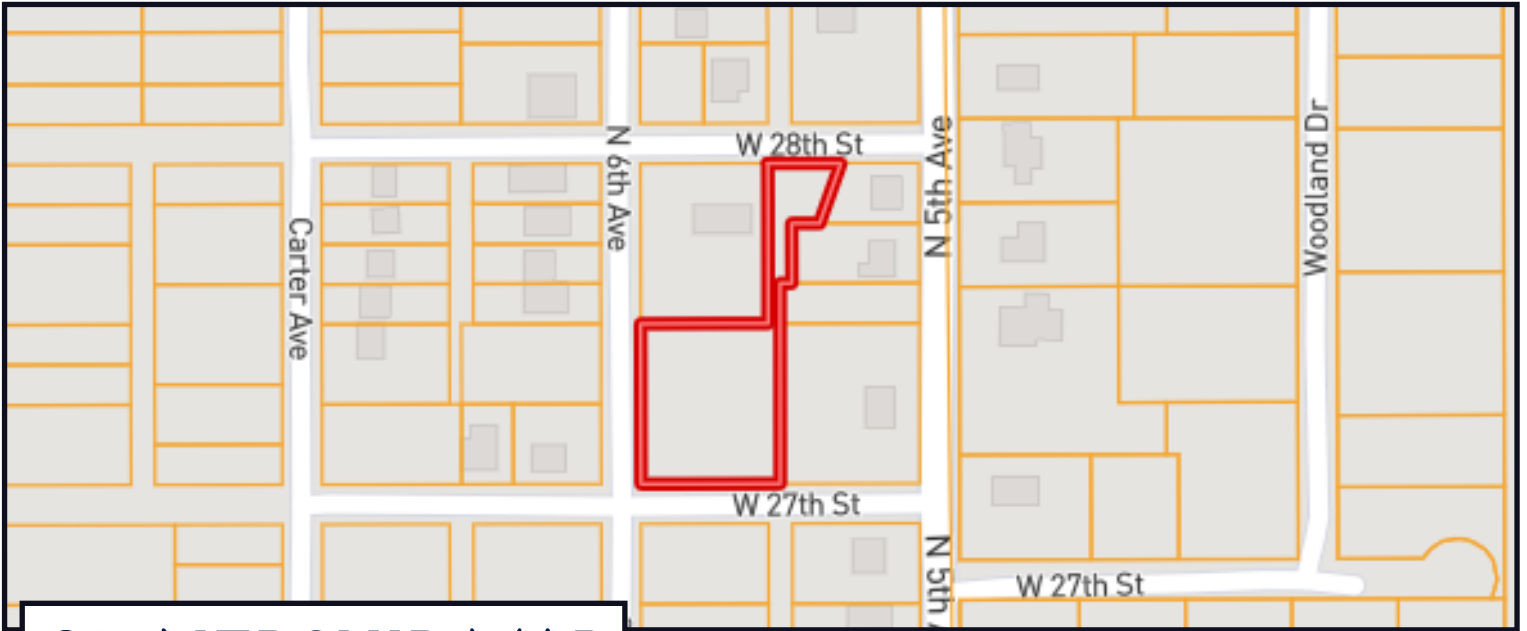
TRAVIS SMITH, REALTOR®
Travis@TomSmithLand.com
601.898.2772 **office** | 601.600.0428 **cell**



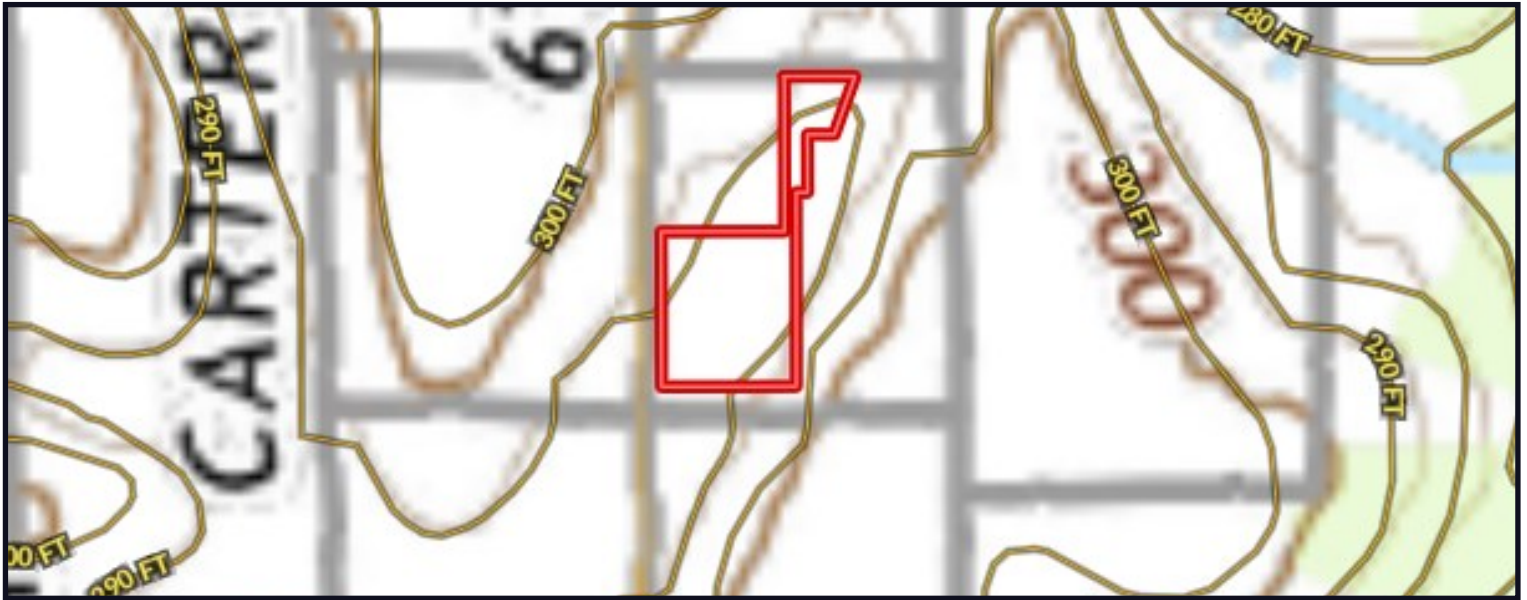
Expect More. Get More.

TomSmithLandandHomes.com

Information is believed to be accurate but not guaranteed.



OWNERSHIP MAP



TOPO MAP

Call me today!

TRAVIS SMITH, REALTOR®
Travis@TomSmithLand.com
601.898.2772 office | 601.600.0428 cell



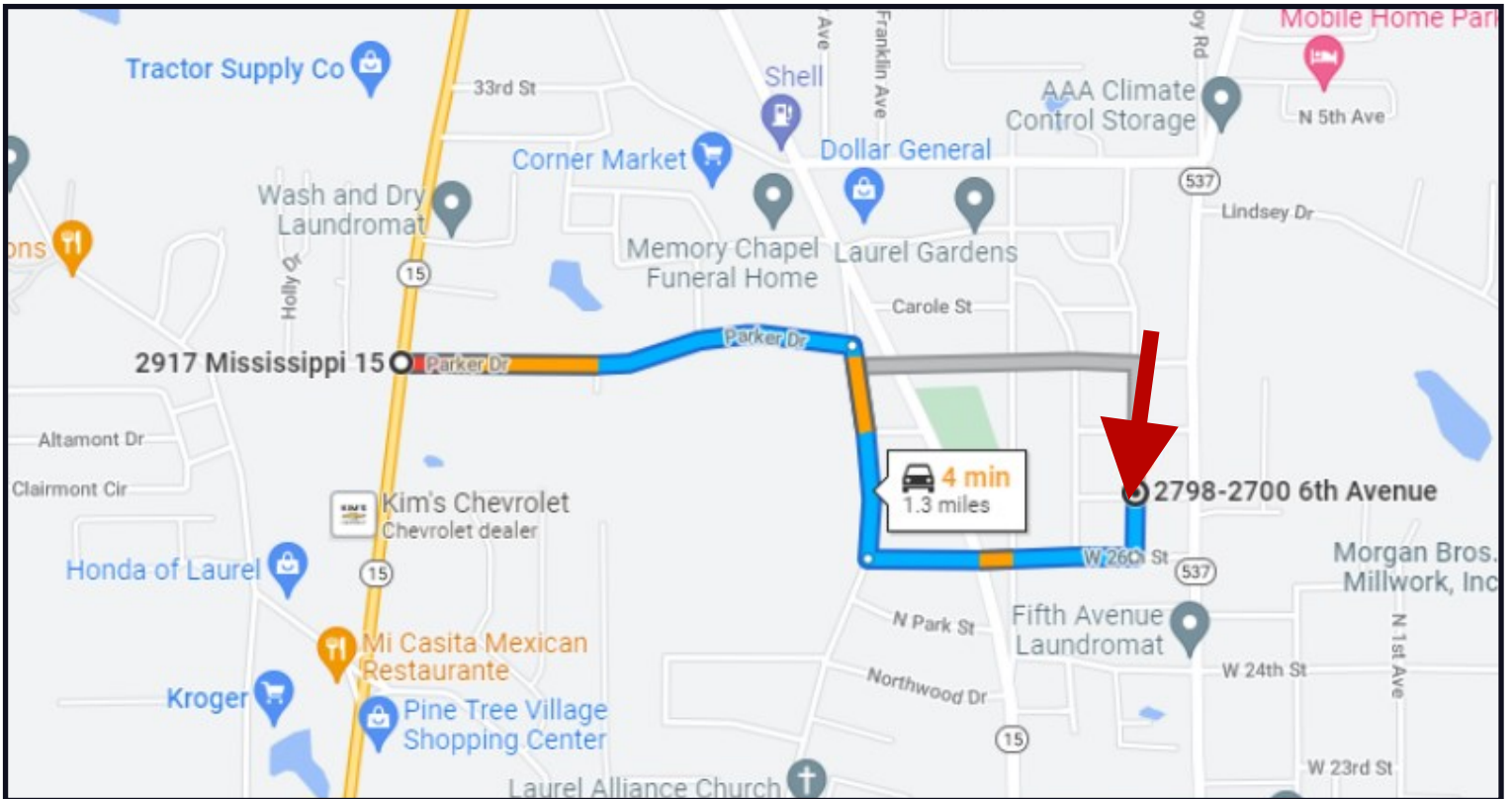
Expect More. Get More.



TomSmithLandandHomes.com

Information is believed to be accurate but not guaranteed.

DIRECTIONAL MAP



Directions from four way stop of Hwy 15 and Parker Drive in Laurel, MS:

Head east on Parker Dr toward Plantation Dr for 0.6 miles then turn right onto Old Bay Springs Rd for 0.3 miles then Turn left onto W 26th St for 0.3 miles then Turn left onto 6th Ave and the property is 436 feet on the right.

[2798-2700 6th Ave, Laurel, MS 39440](https://www.google.com/maps/place/2798-2700+6th+Ave,+Laurel,+MS+39440)



Call me today!

TRAVIS SMITH, REALTOR®

Travis@TomSmithLand.com

601.898.2772 office | 601.600.0428 cell



Expect More. Get More.

[TomSmithLandandHomes.com](https://www.TomSmithLandandHomes.com)

Information is believed to be accurate but not guaranteed.