

0.33± Acre Lot in Meridian
Lauderdale County, MS



Located in Lauderdale County, MS, this lot near downtown Meridian and is the perfect lot for you. Great for investment or building a home. The lot is approximately 0.33± acres making it the perfect private property with restrictions allowing for single family homes and office spaces. Power and water are available. Call Travis Smith today for your private showing!

Directions from four way stop of N Hills St and Poplar Springs Dr. in Meridian, MS:

Head North on Poplar Springs Dr. then turn left in 345ft then destination on the right in 0.5 miles.

[5308 Poplar Springs Dr, Meridian, MS 39305](https://www.tomsmithlandandhomes.com/5308-Poplar-Springs-Dr-Meridian-MS-39305)



Call me today!

TRAVIS SMITH, REALTOR®
Travis@TomSmithLand.com
601.898.2772 **office** | 601.600.0428 **cell**



TomSmithLandandHomes.com

Information is believed to be accurate but not guaranteed.



Call me today!

TRAVIS SMITH, REALTOR®
Travis@TomSmithLand.com
601.898.2772 **office** | 601.600.0428 **cell**



Expect More. Get More.

TomSmithLandandHomes.com

Information is believed to be accurate but not guaranteed.



[CLICK HERE FOR AN INTERACTIVE MAP](#)

Call me today!

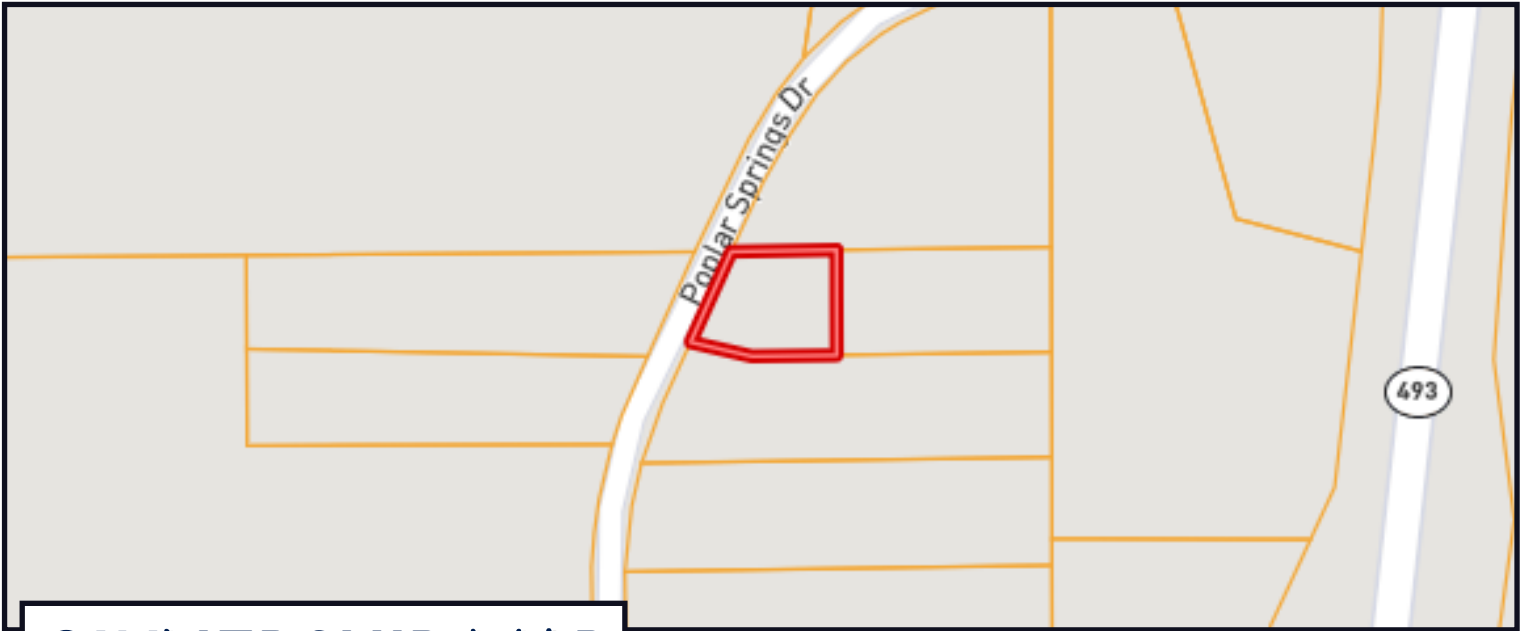
TRAVIS SMITH, REALTOR®
Travis@TomSmithLand.com
601.898.2772 **office** | 601.600.0428 **cell**



Expect More. Get More.

TomSmithLandandHomes.com

Information is believed to be accurate but not guaranteed.



OWNERSHIP MAP



TOPO MAP

Call me today!

TRAVIS SMITH, REALTOR®
Travis@TomSmithLand.com
601.898.2772 office | 601.600.0428 cell



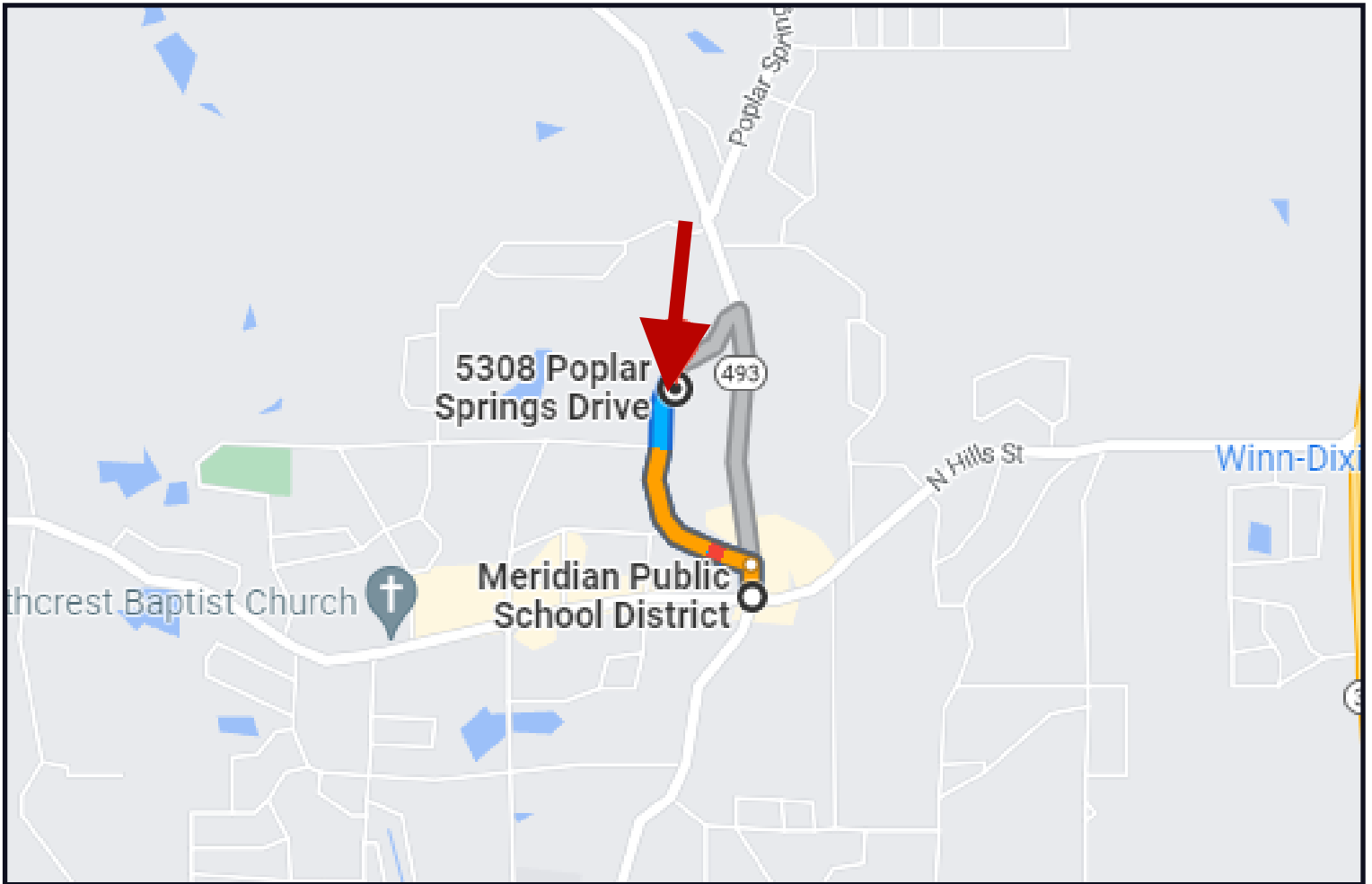
Expect More. Get More.



TomSmithLandandHomes.com

Information is believed to be accurate but not guaranteed.

DIRECTIONAL MAP



Directions from four way stop of N Hills St and Poplar Springs Dr. in Meridian, MS:

Head North on Poplar Springs Dr. then turn left in 345ft then destination on the right in 0.5 miles.

[5308 Poplar Springs Dr, Meridian, MS 39305](#)



Call me today!

TRAVIS SMITH, REALTOR®

Travis@TomSmithLand.com

601.898.2772 **office** | 601.600.0428 **cell**



Expect More. Get More.

TomSmithLandandHomes.com

Information is believed to be accurate but not guaranteed.