

3± ACRE HOMESITE IN JONES COUNTY, MS

\$60,000

Check out this 3± acre home-site in the Ellisville Community in Jones County, MS. The mostly wooded property has several spots for homesite spots and would provide a nice big yard. The property is located in the highly coveted West Jones School District and has approximately 260 feet of road frontage on Highway 29. Utilities are available nearby. Call Preston Smith for a showing today!

Directions from the intersection of I-59 and MS-29 in Ellisville, MS: Take Exit 88 for MS-29/MS-588 toward Ellisville, in .1 mile, turn right onto MS-29S/Hill St, in 1.0 mile, turn right onto MS-29 S/N Church St, in 5.1 miles, the property will be on the right.

[GOOGLE MAP LINK](#)



Call me today!

PRESTON SMITH, MANAGING BROKER
Preston@TomSmithLand.com
601.990.5070 **office** | 601.209.7150 **cell**



TomSmithLandandHomes.com

Information is believed to be accurate but not guaranteed.



Call me today!

PRESTON SMITH, MANAGING BROKER
Preston@TomSmithLand.com
601.990.5070 **office** | 601.209.7150 **cell**

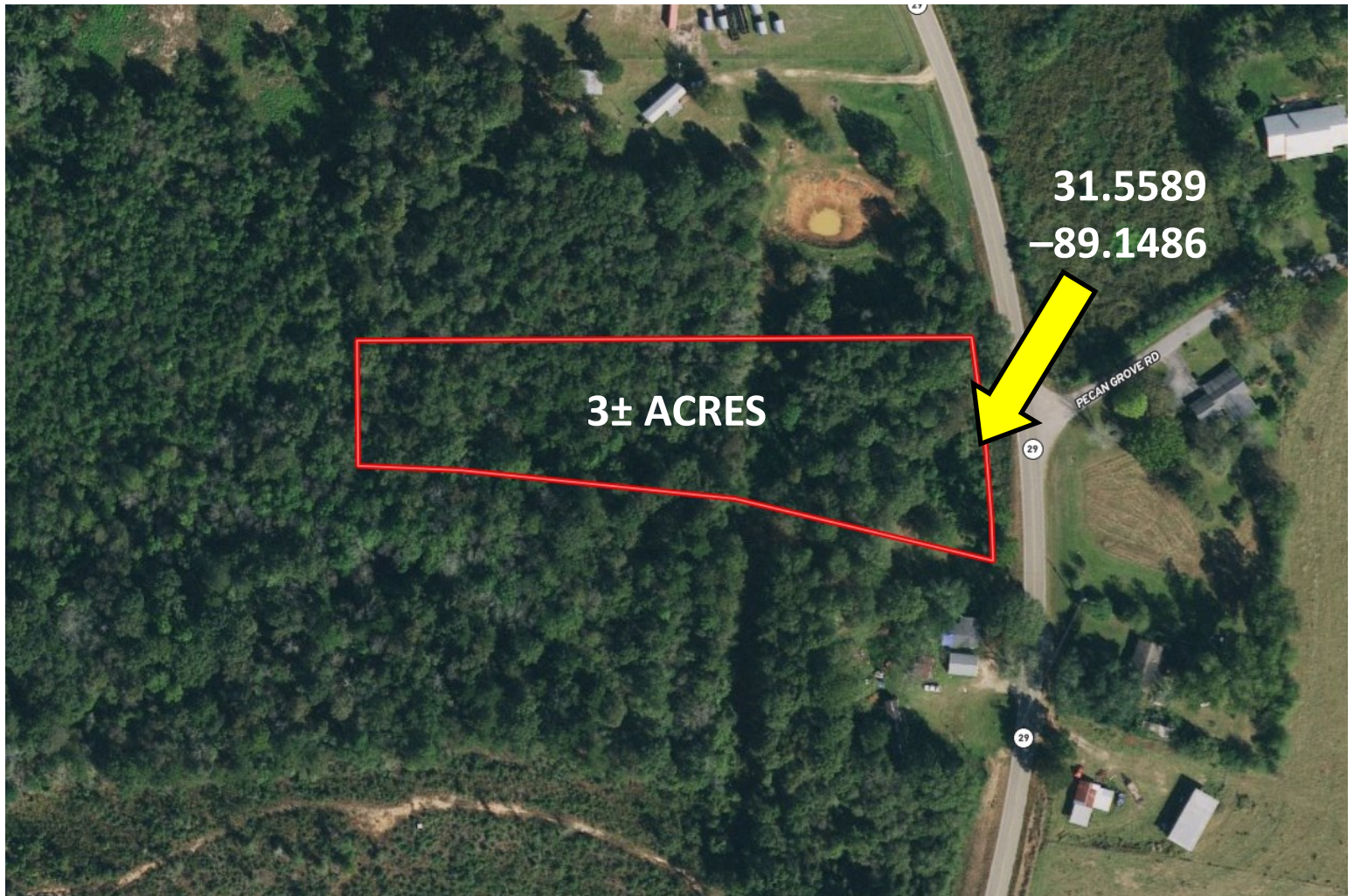


Expect More. Get More.

TomSmithLandandHomes.com

Information is believed to be accurate but not guaranteed.

Aerial Map



[INTERACTIVE MAP LINK](#)

Call me today!

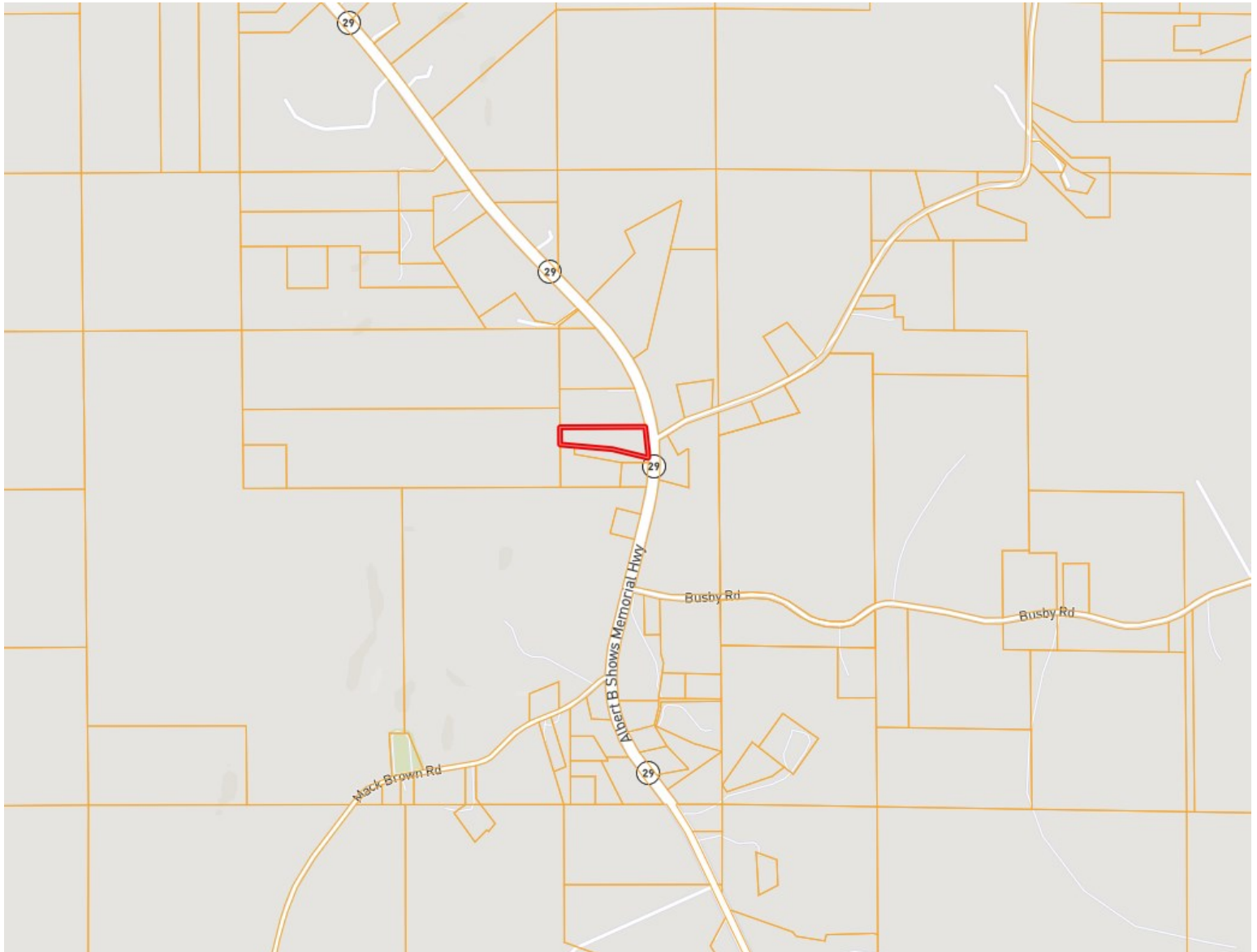
PRESTON SMITH, MANAGING BROKER
Preston@TomSmithLand.com
601.990.5070 **office** | 601.209.7150 **cell**



TomSmithLandandHomes.com

Information is believed to be accurate but not guaranteed.

Ownership Map



Call me today!

PRESTON SMITH, MANAGING BROKER
Preston@TomSmithLand.com
601.990.5070 **office** | 601.209.7150 **cell**

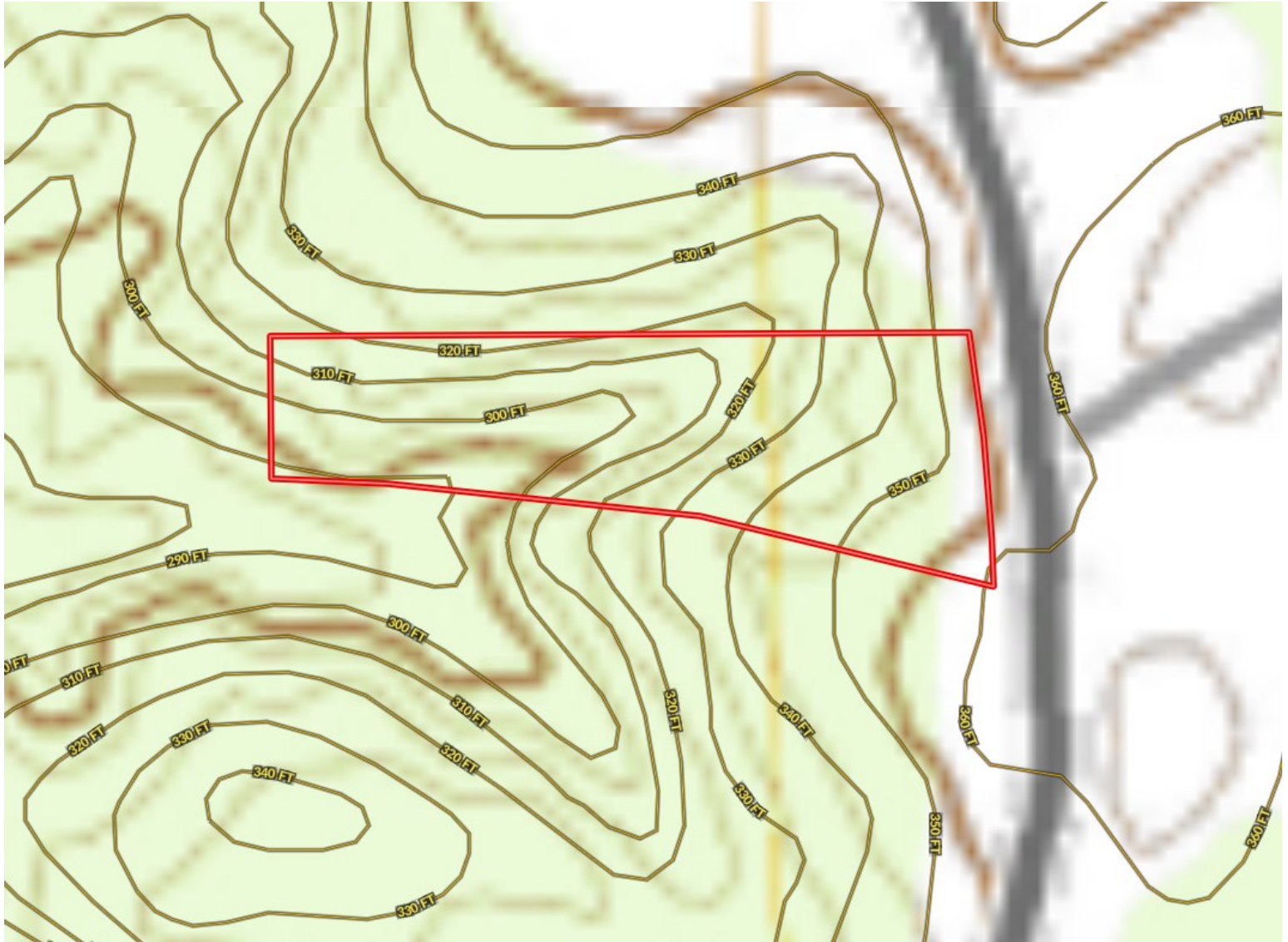


Expect More. Get More.

TomSmithLandandHomes.com

Information is believed to be accurate but not guaranteed.

Topography Map



Call me today!

PRESTON SMITH, MANAGING BROKER
Preston@TomSmithLand.com
601.990.5070 **office** | 601.209.7150 **cell**

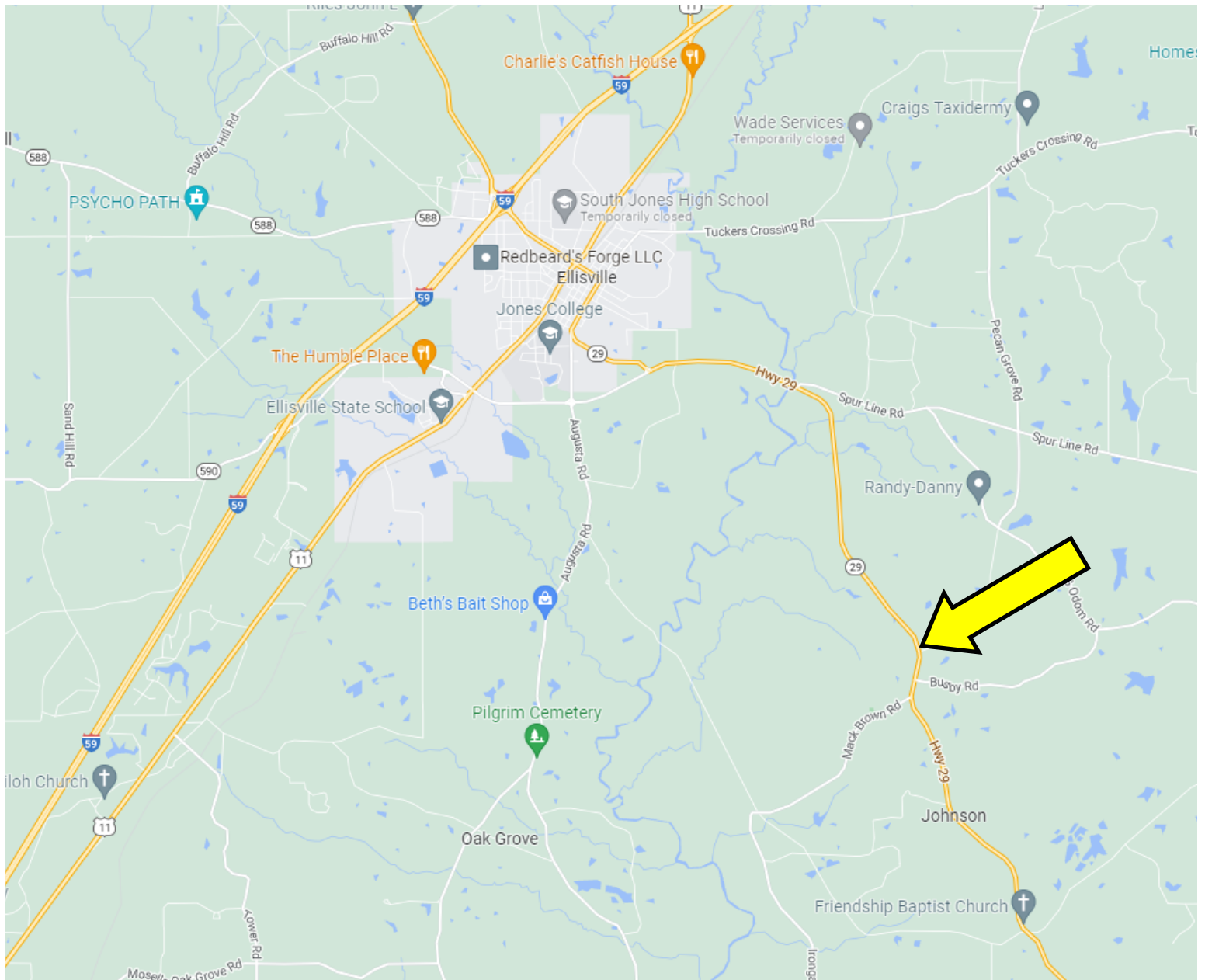


Expect More. Get More.

TomSmithLandandHomes.com

Information is believed to be accurate but not guaranteed.

Directional Map



Directions from the intersection of I-59 and MS-29 in Ellisville, MS: Take Exit 88 for MS-29/MS-588 toward Ellisville, in .1 mile, turn right onto MS-29S/Hill St, in 1.0 mile, turn right onto MS-29 S/N Church St, in 5.1 miles, the property will be on the right.

GOOGLE MAP LINK

Call me today!

PRESTON SMITH, MANAGING BROKER
Preston@TomSmithLand.com
601.990.5070 **office** | 601.209.7150 **cell**



Expect More. Get More.

TomSmithLandandHomes.com

Information is believed to be accurate but not guaranteed.