

Beautiful Home In Gluckstadt, MS



Amazing home located in the town of Gluckstadt, Stillhouse Creek Neighborhood, Madison County, MS. This home offers a spacious three bed two bath floor plan along with a large main bedroom and bathroom. The home features a large open den great for relaxing and set up for entertainment. There is a convenient mud/laundry room as you walk into the home from the garage. Nice kitchen with plenty of room. There is a huge backyard which makes it perfect for kids or pets! There is a two car garage and big driveway to offer plenty of parking. The home was built in 2008 and is approximately 1628 square feet heated and cooled on an approximately 0.25 acre lot. For your private viewing call Preston or Travis today!

DIRECTIONS FROM I-55 North Bound at Gluckstadt exit: Take the Gluckstadt exit and turn left at the top of the off ramp. In 2 miles take a right onto Catlett Rd. Travel on Catlett Rd for another 0.6 miles then turn right again into Stillhouse Creek Neighborhood, continue straight through the round about and take a left in 0.2 miles onto Copper Ridge Ct. The home is on the right in approximately 300ft.

Address: 112 Copper Ridge Ct Gluckstadt, MS



PRESTON SMITH, MANAGING BROKER
Preston@TomSmithLand.com
601.990.5070 **office** | 601.209.7150 **cell**



Expect More. Get More.

Call us today!



TRAVIS SMITH, REALTOR®
Travis@TomSmithLand.com
601.990.5070 **office** | 601.600.0428 **cell**

TomSmithLandandHomes.com

Information is believed to be accurate but not guaranteed.





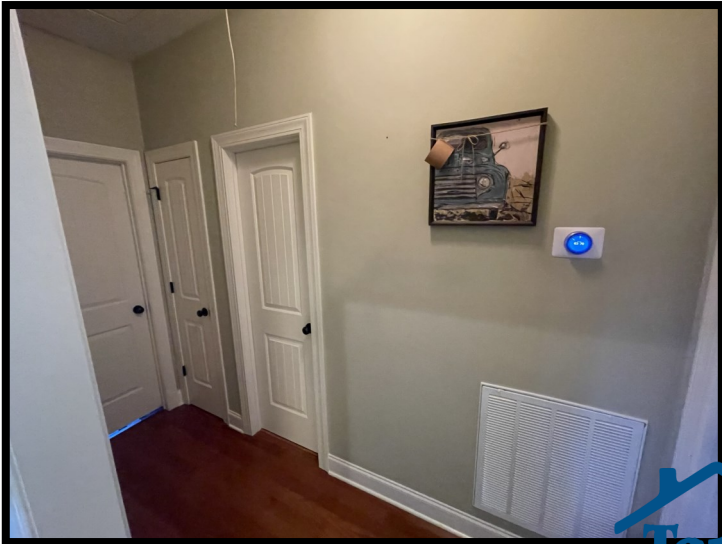
PRESTON SMITH, MANAGING BROKER
 Preston@TomSmithLand.com
 601.990.5070 **office** | 601.209.7150 **cell**

TRAVIS SMITH, REALTOR®
 Travis@TomSmithLand.com
 601.990.5070 **office** | 601.600.0428 **cell**

TomSmithLandandHomes.com

Information is believed to be accurate but not guaranteed.





PRESTON SMITH, MANAGING BROKER
 Preston@TomSmithLand.com
 601.990.5070 **office** | 601.209.7150 **cell**

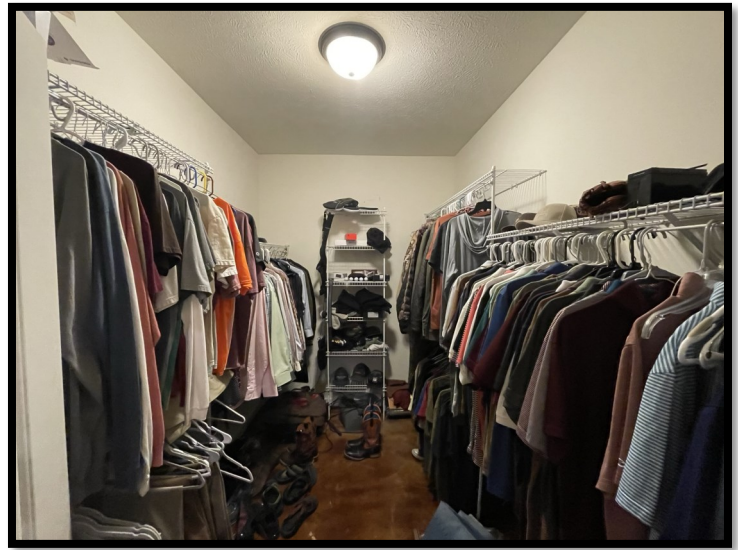


TRAVIS SMITH, REALTOR®
 Travis@TomSmithLand.com
 601.990.5070 **office** | 601.600.0428 **cell**

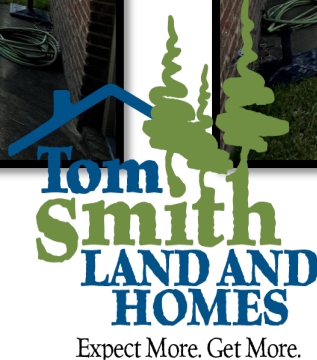
TomSmithLandandHomes.com

Information is believed to be accurate but not guaranteed.





PRESTON SMITH, MANAGING BROKER
Preston@TomSmithLand.com
601.990.5070 **office** | 601.209.7150 **cell**



TRAVIS SMITH, REALTOR®
Travis@TomSmithLand.com
601.990.5070 **office** | 601.600.0428 **cell**

TomSmithLandandHomes.com

Information is believed to be accurate but not guaranteed.





PRESTON SMITH, MANAGING BROKER
 Preston@TomSmithLand.com
 601.990.5070 **office** | 601.209.7150 **cell**



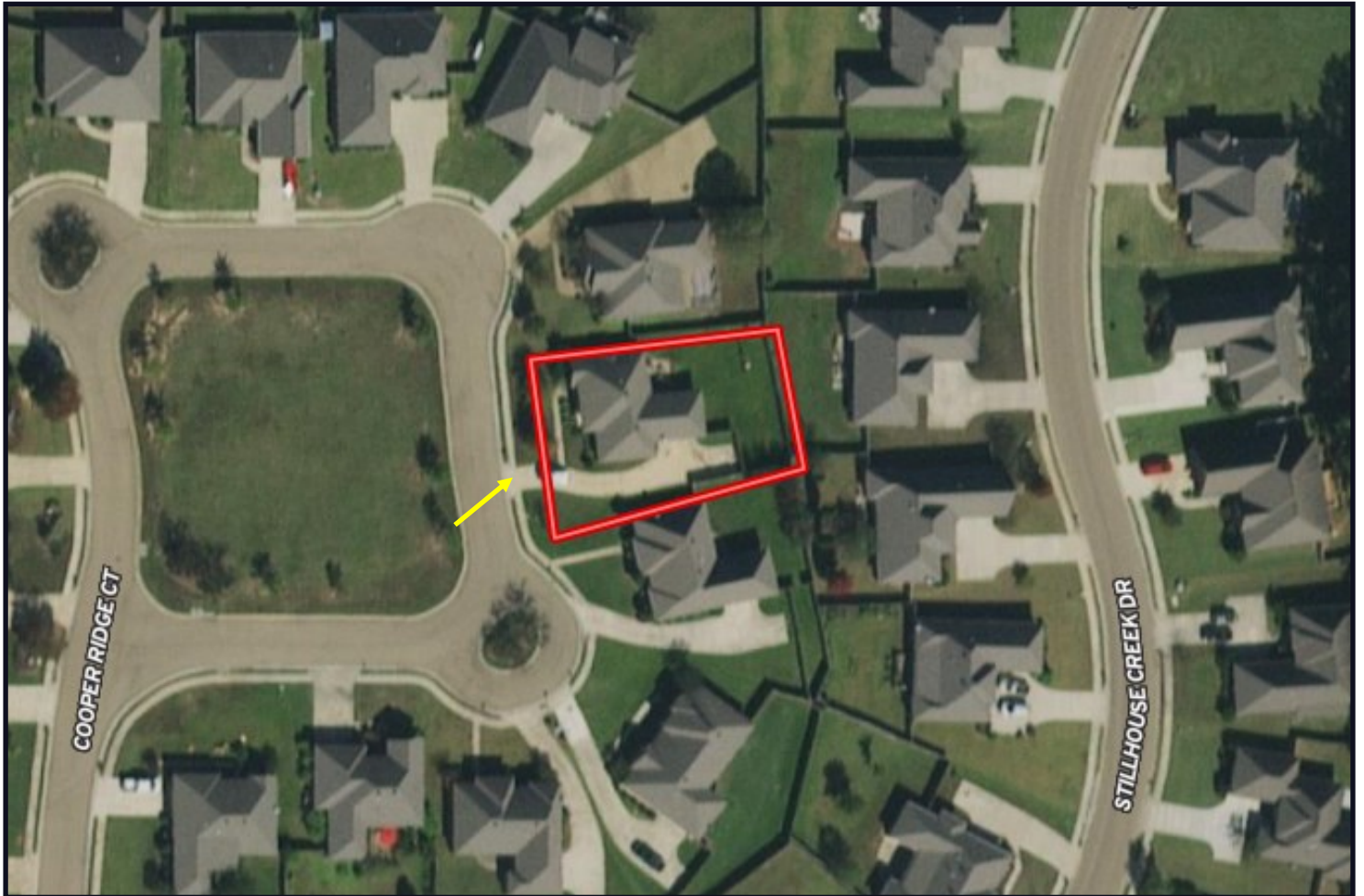
TRAVIS SMITH, REALTOR®
 Travis@TomSmithLand.com
 601.990.5070 **office** | 601.600.0428 **cell**

TomSmithLandandHomes.com

Information is believed to be accurate but not guaranteed.



AERIAL MAP



CLICK [HERE](#) FOR AN INTERACTIVE MAP



PRESTON SMITH, MANAGING BROKER
Preston@TomSmithLand.com
601.990.5070 **office** | 601.209.7150 **cell**

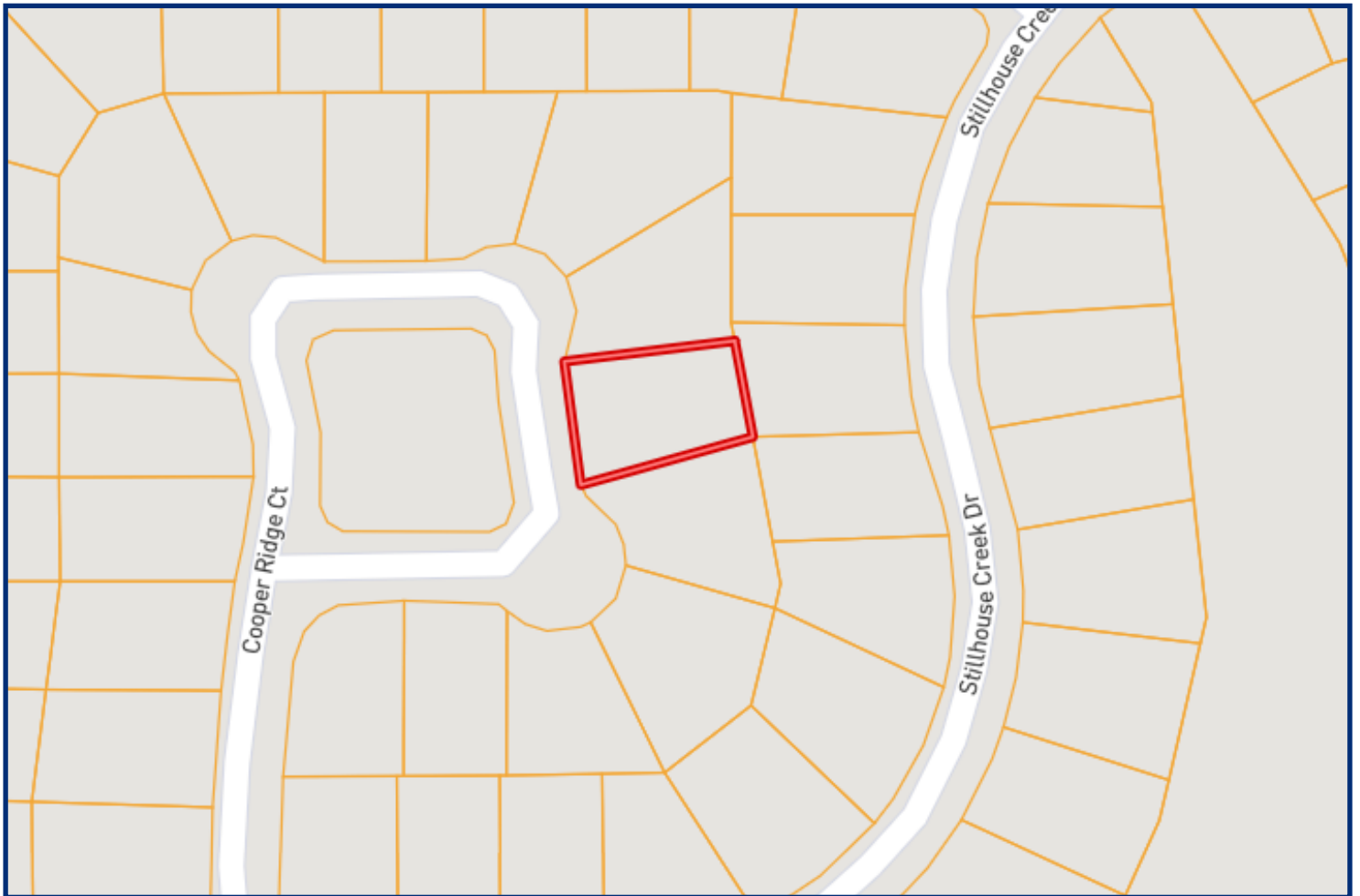
TRAVIS SMITH, REALTOR®
Travis@TomSmithLand.com
601.990.5070 **office** | 601.600.0428 **cell**

TomSmithLandandHomes.com

Information is believed to be accurate but not guaranteed.



OWNERSHIP MAP



PRESTON SMITH, MANAGING BROKER
Preston@TomSmithLand.com
601.990.5070 **office** | 601.209.7150 **cell**



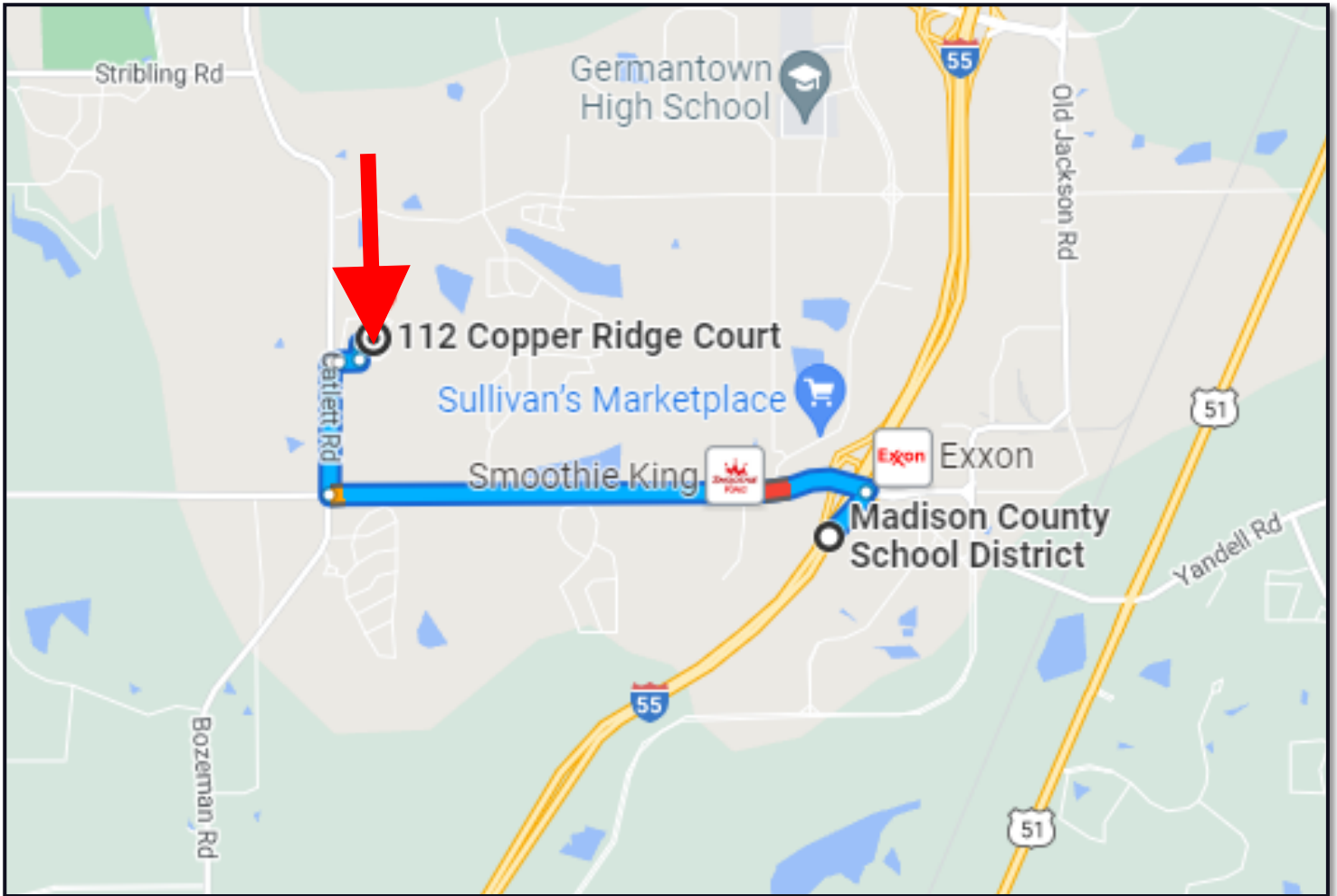
TRAVIS SMITH, REALTOR®
Travis@TomSmithLand.com
601.990.5070 **office** | 601.600.0428 **cell**

TomSmithLandandHomes.com

Information is believed to be accurate but not guaranteed.



DIRECTIONAL MAP



DIRECTIONS FROM I-55 North Bound at Gluckstadt exit: Take the Gluckstadt exit and turn left at the top of the off ramp. In 2 miles take a right onto Catlett Rd. Travel on Catlett Rd for another 0.6 miles then turn right again into Stillhouse Creek Neighborhood, continue straight through the round about and take a left in 0.2 miles onto Copper Ridge Ct. The home is on the right in approximately 300ft.

Address: 112 Copper Ridge Ct. Gluckstadt, MS [GOOGLE MAP LINK](#)



PRESTON SMITH, MANAGING BROKER
Preston@TomSmithLand.com
601.990.5070 office | 601.209.7150 cell



Call us today!



TRAVIS SMITH, REALTOR®
Travis@TomSmithLand.com
601.990.5070 office | 601.600.0428 cell

TomSmithLandandHomes.com

Information is believed to be accurate but not guaranteed.

