

105 Bonne Vie Drive Brandon, MS 39047



\$599,000

This is the home you have been waiting for! Located on a 1± acre lakefront lot off of Fannin Landing and near the reservoir in Rankin County, MS, this incredible 6-year-old custom-built home is still in new construction condition and has all the luxurious amenities. This home features 3,189 SF, four bedrooms, four bathrooms, and an open floorplan with tall ceilings and plenty of natural light. The gorgeous front porch welcomes you into the family room with an exposed brick wall and a fireplace, making it the ideal cozy spot on a cool night. Off of the family room is the open kitchen and breakfast area. The kitchen is a chef's delight with a huge island, breakfast bar, stainless steel appliances, and an oversized, walk-in pantry. The formal dining room is also conveniently nearby, providing extra space for entertaining. The large primary suite includes an adjoining bathroom with a claw foot tub, walk-in double closets, double vanities, and a tile shower. The laundry room has plenty of storage space, a folding area, and built-in shelving. Upstairs boasts an additional bedroom suite with its own bathroom. The other bedrooms are generous in size, one has a full bathroom, and all have ample closet space. Outside you will find an amazing covered back porch with wood burning fireplace complete with a built-in grill, sink, and cabinets. This area could be an additional place for you to host friends and family. A two-door garage is also available for your vehicles and boat to enjoy that reservoir life. Buzz Belden today to schedule your viewing!



Call me today!

DAVID BELDEN, REALTOR®
DBelden@TomSmithLand.com
601.898.2772 **office** | 601.415.3884 **cell**



TomSmithLandandHomes.com

Information is believed to be accurate but not guaranteed.



Call me today!

DAVID BELDEN, REALTOR®
DBelden@TomSmithLand.com
601.898.2772 office | 601.415.3884 cell



TomSmithLandandHomes.com

Information is believed to be accurate but not guaranteed.



Call me today!

DAVID BELDEN, REALTOR®
DBelden@TomSmithLand.com
601.898.2772 office | 601.415.3884 cell



Expect More. Get More.

TomSmithLandandHomes.com

Information is believed to be accurate but not guaranteed.



Call me today!

DAVID BELDEN, REALTOR®
DBelden@TomSmithLand.com
601.898.2772 office | 601.415.3884 cell



Expect More. Get More.

TomSmithLandandHomes.com

Information is believed to be accurate but not guaranteed.



Call me today!

DAVID BELDEN, REALTOR®
DBelden@TomSmithLand.com
601.898.2772 office | 601.415.3884 cell



TomSmithLandandHomes.com

Information is believed to be accurate but not guaranteed.



Call me today!

DAVID BELDEN, REALTOR®
DBelden@TomSmithLand.com
601.898.2772 office | 601.415.3884 cell



Expect More. Get More.

TomSmithLandandHomes.com

Information is believed to be accurate but not guaranteed.



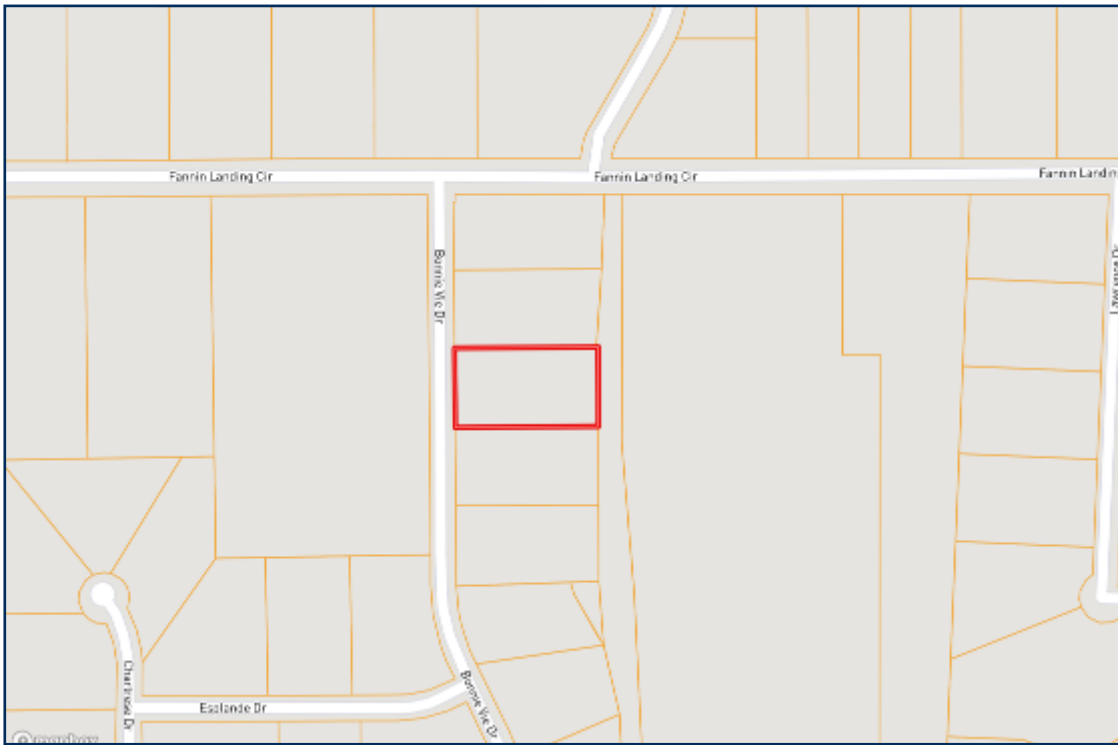
Call me today!

DAVID BELDEN, REALTOR®
DBelden@TomSmithLand.com
601.898.2772 office | 601.415.3884 cell



TomSmithLandandHomes.com

Information is believed to be accurate but not guaranteed.



Ownership Map



Aerial Map

[CLICK HERE FOR AN INTERACTIVE MAP](#)

Call me today!

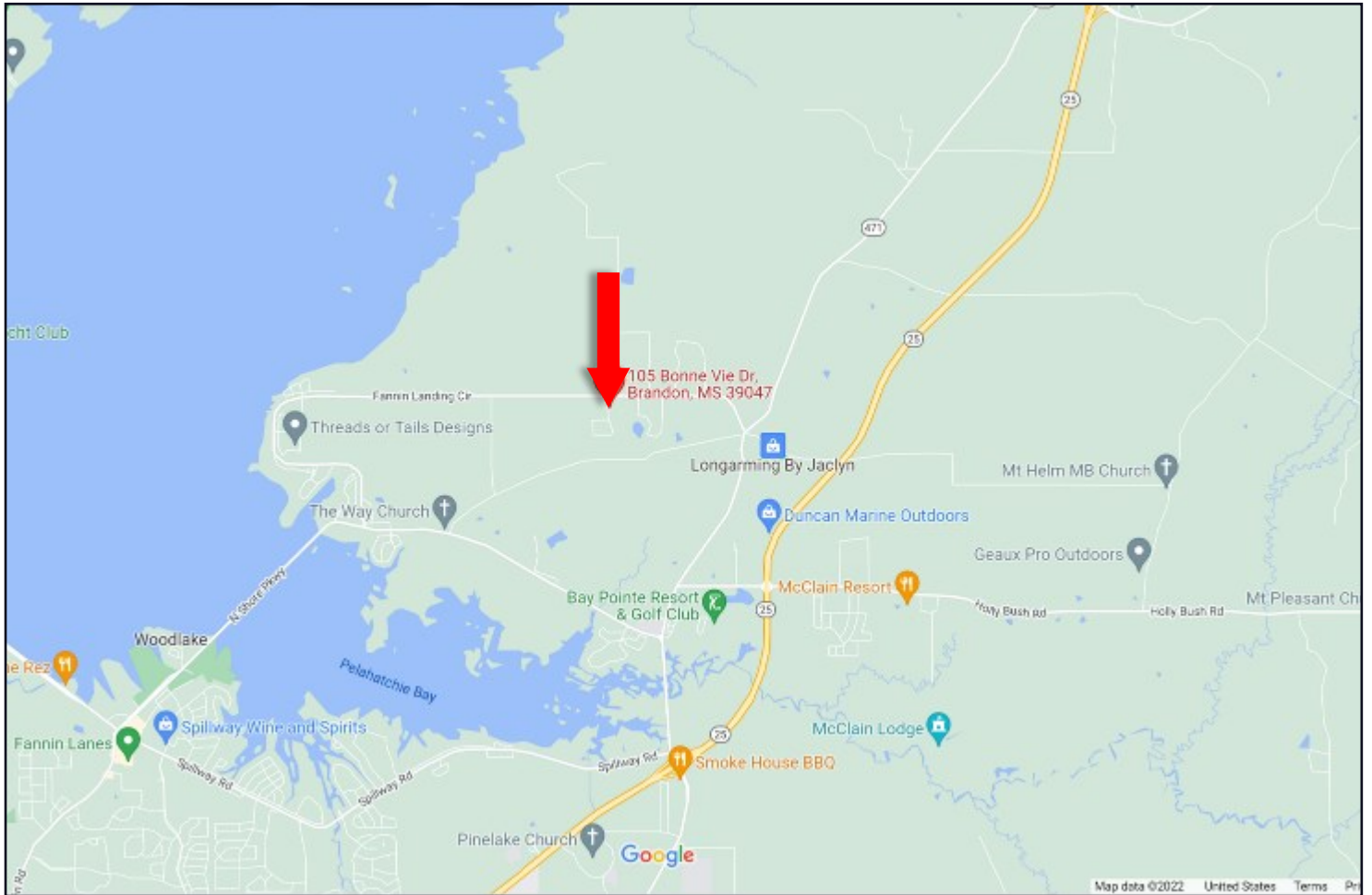
DAVID BELDEN, REALTOR®
DBelden@TomSmithLand.com
601.898.2772 office | 601.415.3884 cell



TomSmithLandandHomes.com

Information is believed to be accurate but not guaranteed.

Directional Map



Directions from N Shore Parkway and Fannin Landing Circle in Brandon, MS 39047: Travel Fannin Landing Circle for 4.5 miles. Turn right onto Bonne Vie Drive. The home will be on your right.
105 Bonne Vie Drive Brandon, MS 39047 [GOOGLE MAP LINK](#)



call me today!

DAVID BELDEN, REALTOR®
DBelden@TomSmithLand.com
601.898.2772 office | 601.415.3884 cell



TomSmithLandandHomes.com

Information is believed to be accurate but not guaranteed.