

EXCELLENT HUNTING ON 130± ACRES IN WASHINGTON PARISH, LA



\$494,000

Are you looking for that hunting property in South Louisiana? Here it is! 130± acres of pine and hardwood timber in the town of Franklinton, Washington Parish, Louisiana. This property provides excellent deer and turkey hunting, with established food plots and plenty of area for the wildlife to roam. The internal road system makes navigation a breeze. The property features the Bogue Lusa Creek, which provides plenty of areas to fish and swim, and adequate water for the wildlife. The property is conveniently located just an hour and a half from New Orleans and an hour and forty minutes from Baton Rouge, LA. Call Preston Smith for a private showing!

Directions from the intersection of Main St and LA-10 in Franklinton, LA: Travel east on LA-10E, in 8.3 miles, turn right onto LA-439E, in 1.1 miles, turn right onto Hobgood Dr, in 299 feet, take a slight left onto Easy Way, the property starts at the end of Easy Way on the left.



Call me today!

PRESTON SMITH, MANAGING BROKER
Preston@TomSmithLand.com
601.990.5070 **office** | 601.209.7150 **cell**



Expect More. Get More.

TomSmithLandandHomes.com

Information is believed to be accurate but not guaranteed.



Call me today!

PRESTON SMITH, MANAGING BROKER
Preston@TomSmithLand.com
601.990.5070 **office** | 601.209.7150 **cell**



Expect More. Get More.

TomSmithLandandHomes.com

Information is believed to be accurate but not guaranteed.



Call me today!

PRESTON SMITH, MANAGING BROKER
Preston@TomSmithLand.com
601.990.5070 **office** | 601.209.7150 **cell**

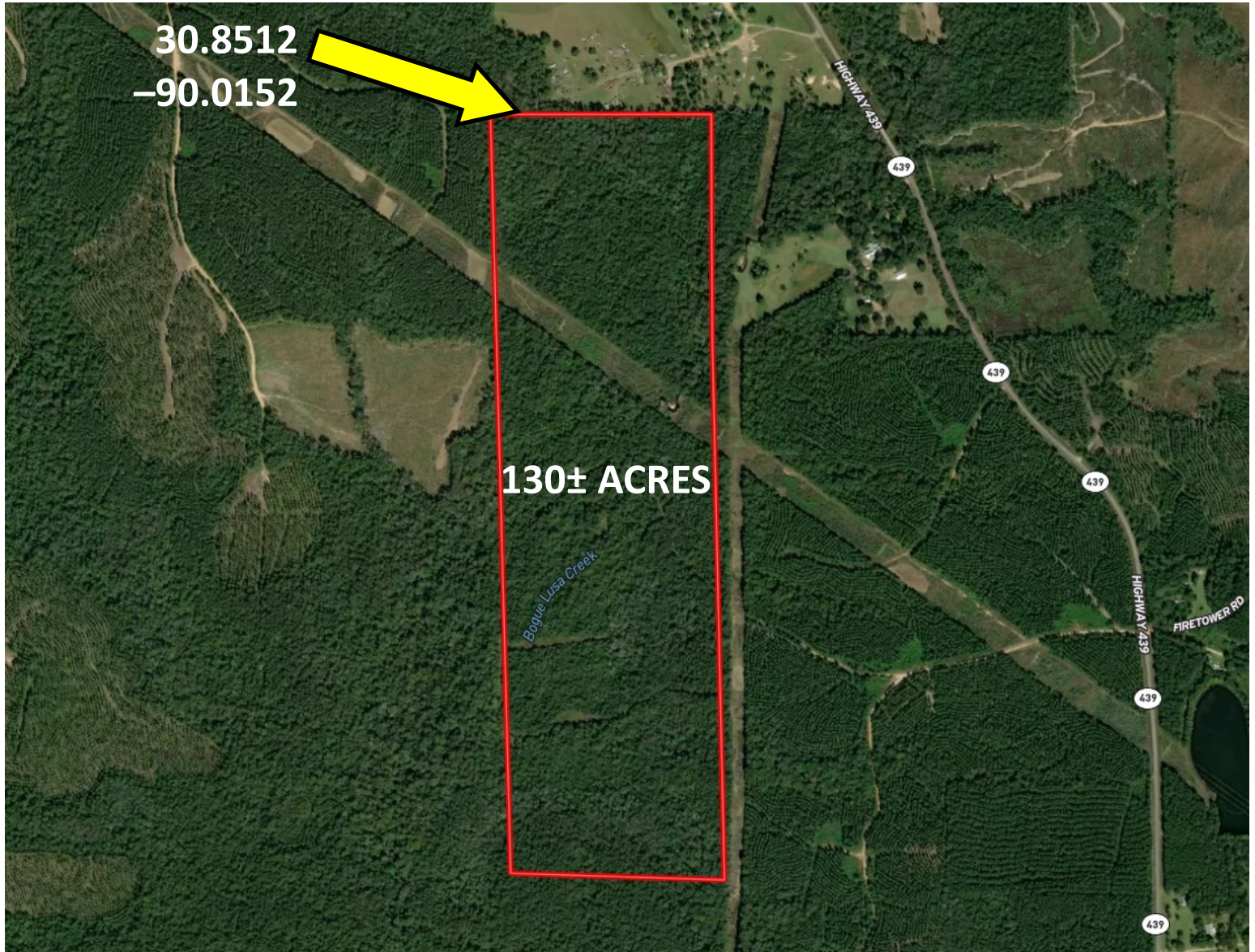


Expect More. Get More.

TomSmithLandandHomes.com

Information is believed to be accurate but not guaranteed.

Aerial Map



[INTERACTIVE MAP LINK](#)

Call me today!

PRESTON SMITH, MANAGING BROKER
Preston@TomSmithLand.com
601.990.5070 **office** | 601.209.7150 **cell**

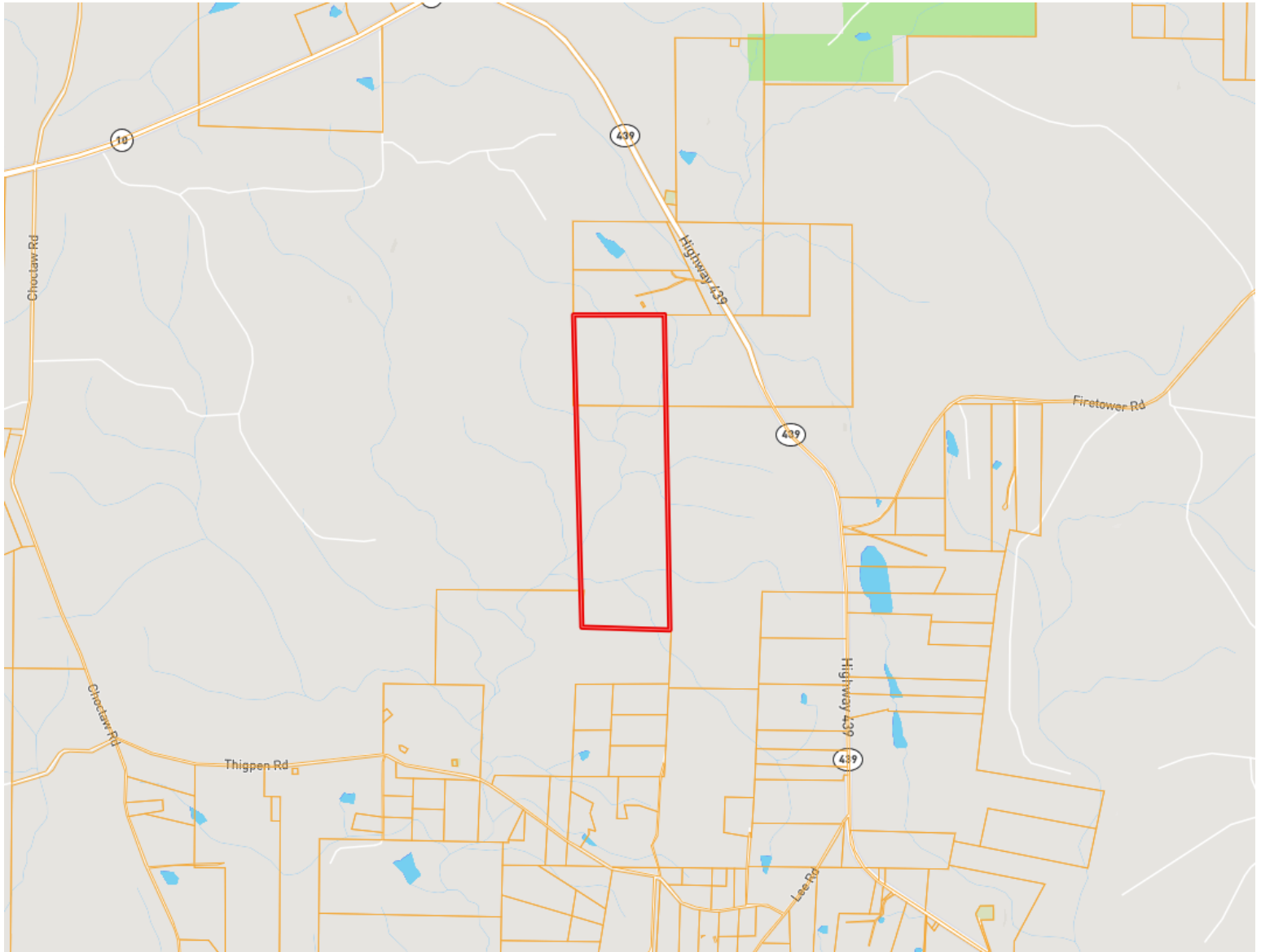


Expect More. Get More.

TomSmithLandandHomes.com

Information is believed to be accurate but not guaranteed.

Ownership Map



Call me today!

PRESTON SMITH, MANAGING BROKER
Preston@TomSmithLand.com
601.990.5070 **office** | 601.209.7150 **cell**

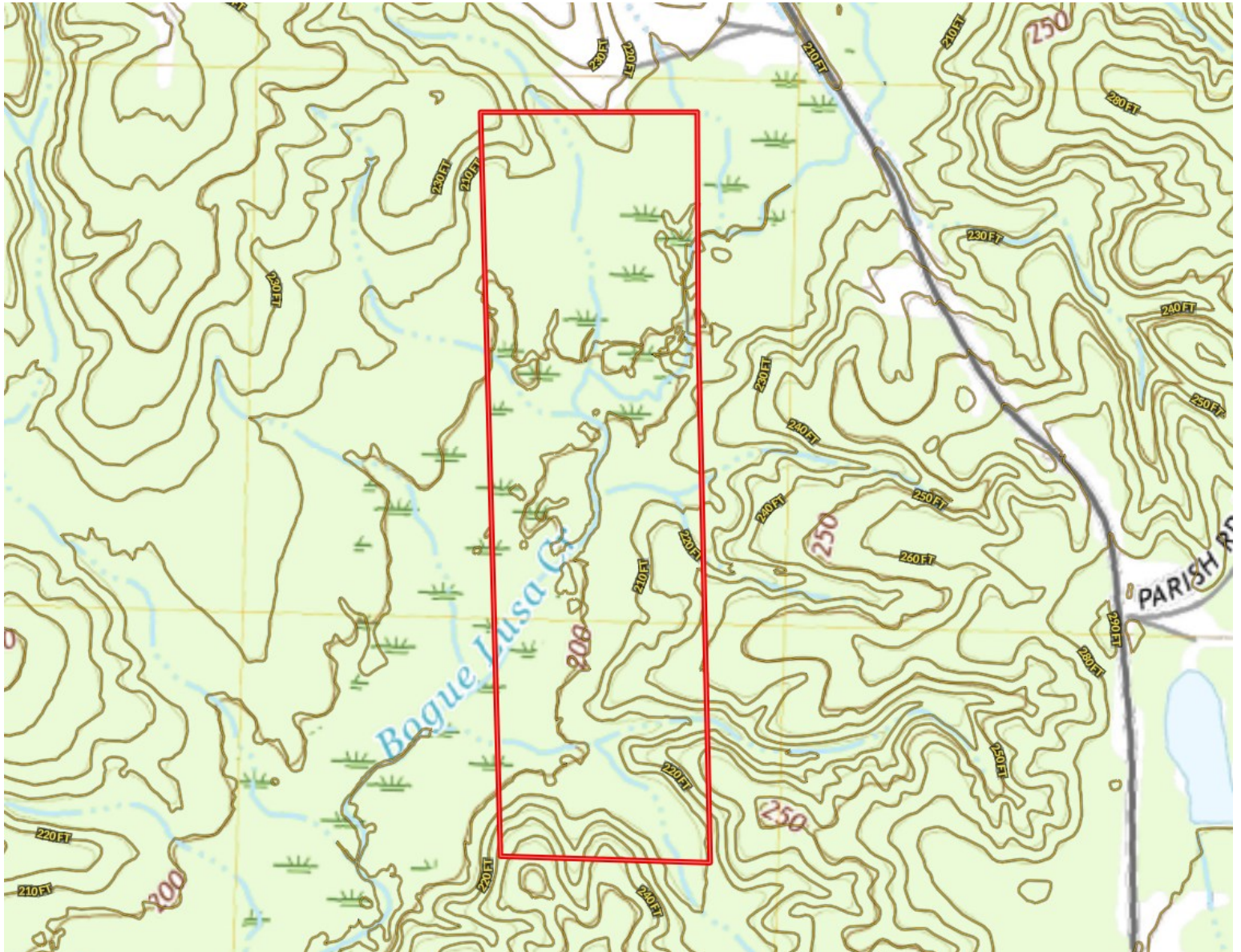


Expect More. Get More.

TomSmithLandandHomes.com

Information is believed to be accurate but not guaranteed.

Topography Map



Call me today!

PRESTON SMITH, MANAGING BROKER
Preston@TomSmithLand.com
601.990.5070 **office** | 601.209.7150 **cell**

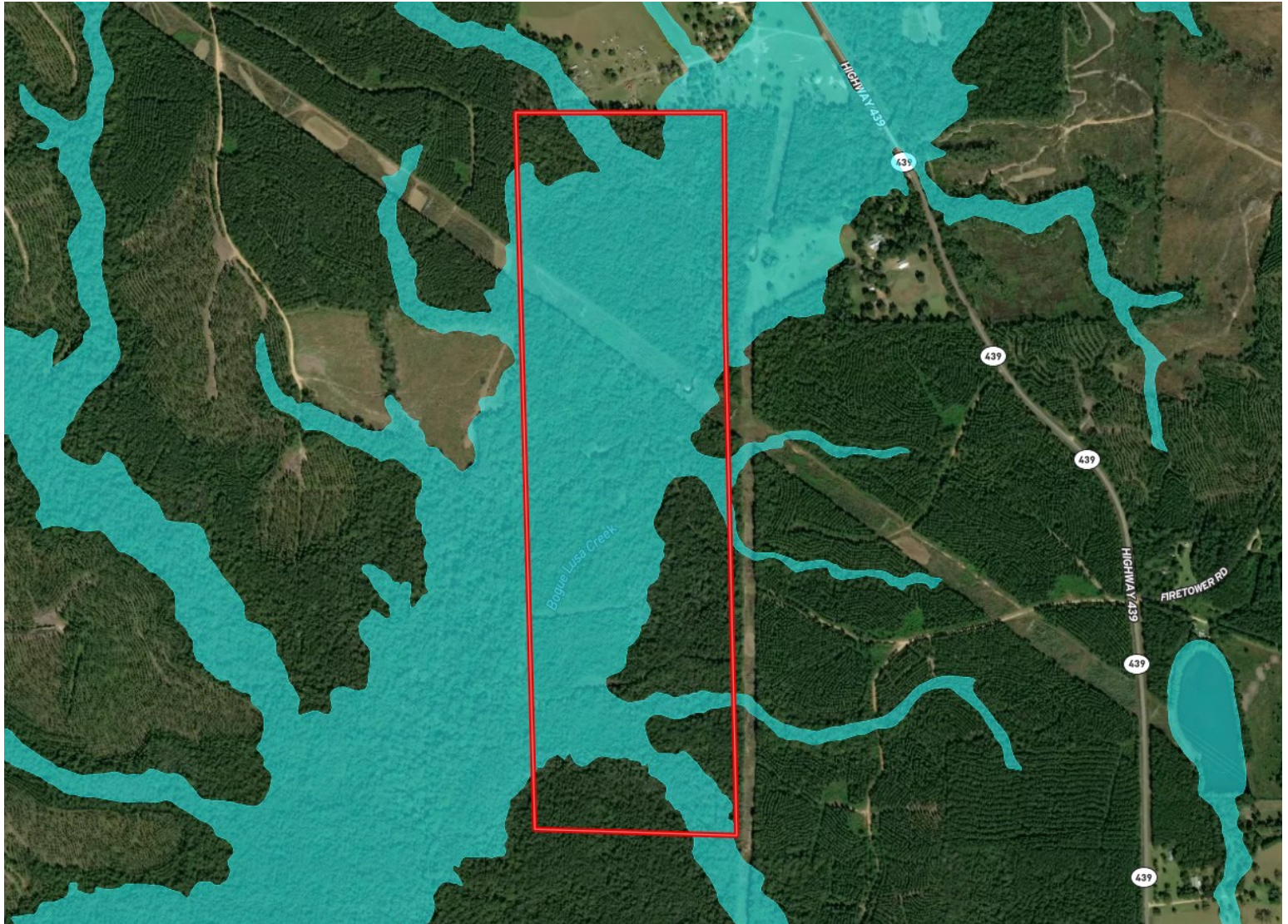


Expect More. Get More.

TomSmithLandandHomes.com

Information is believed to be accurate but not guaranteed.

Flood Map



Call me today!

PRESTON SMITH, MANAGING BROKER
Preston@TomSmithLand.com
601.990.5070 **office** | 601.209.7150 **cell**

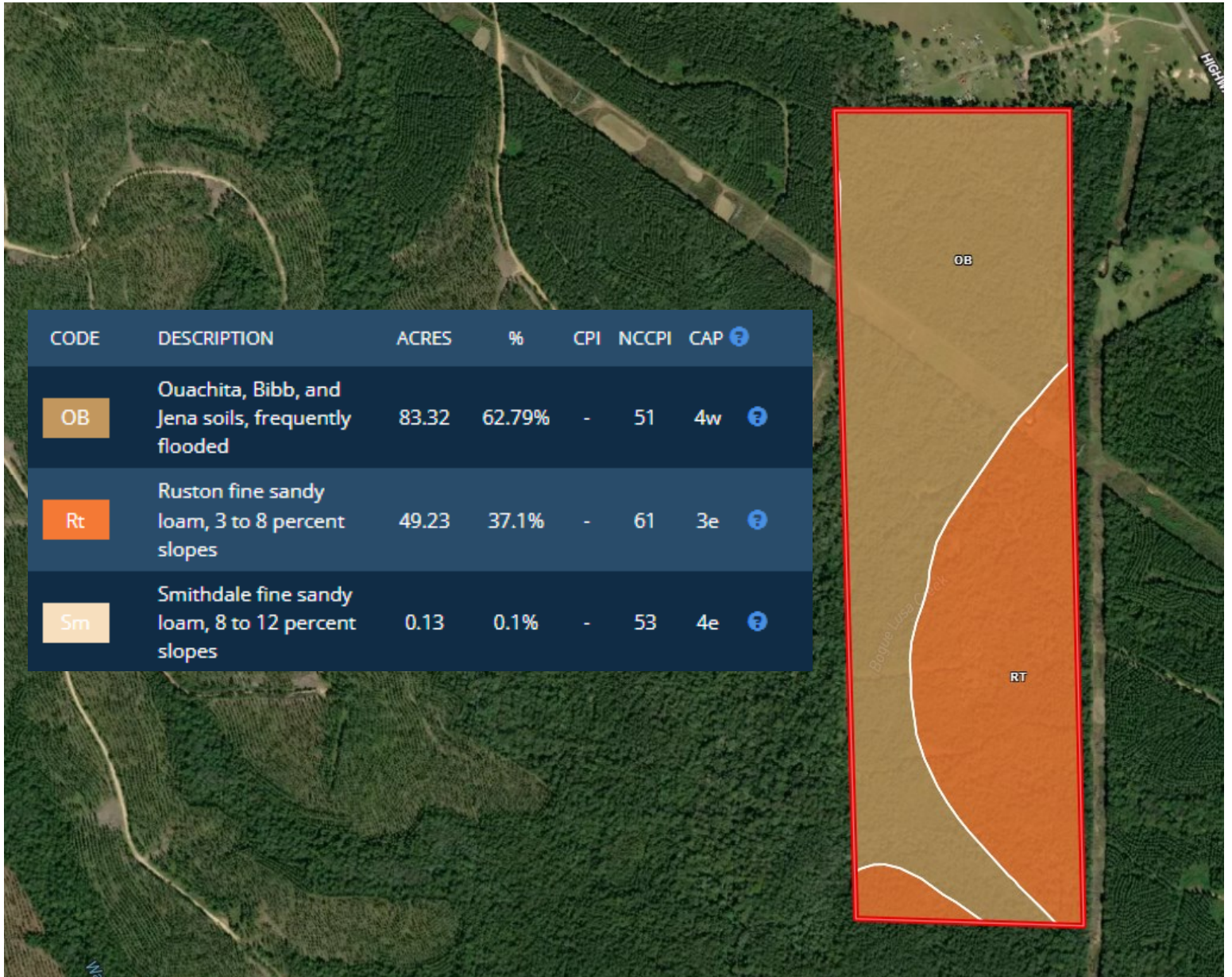


Expect More. Get More.

TomSmithLandandHomes.com

Information is believed to be accurate but not guaranteed.

Soil Map



Call me today!

PRESTON SMITH, MANAGING BROKER
 Preston@TomSmithLand.com
 601.990.5070 **office** | 601.209.7150 **cell**

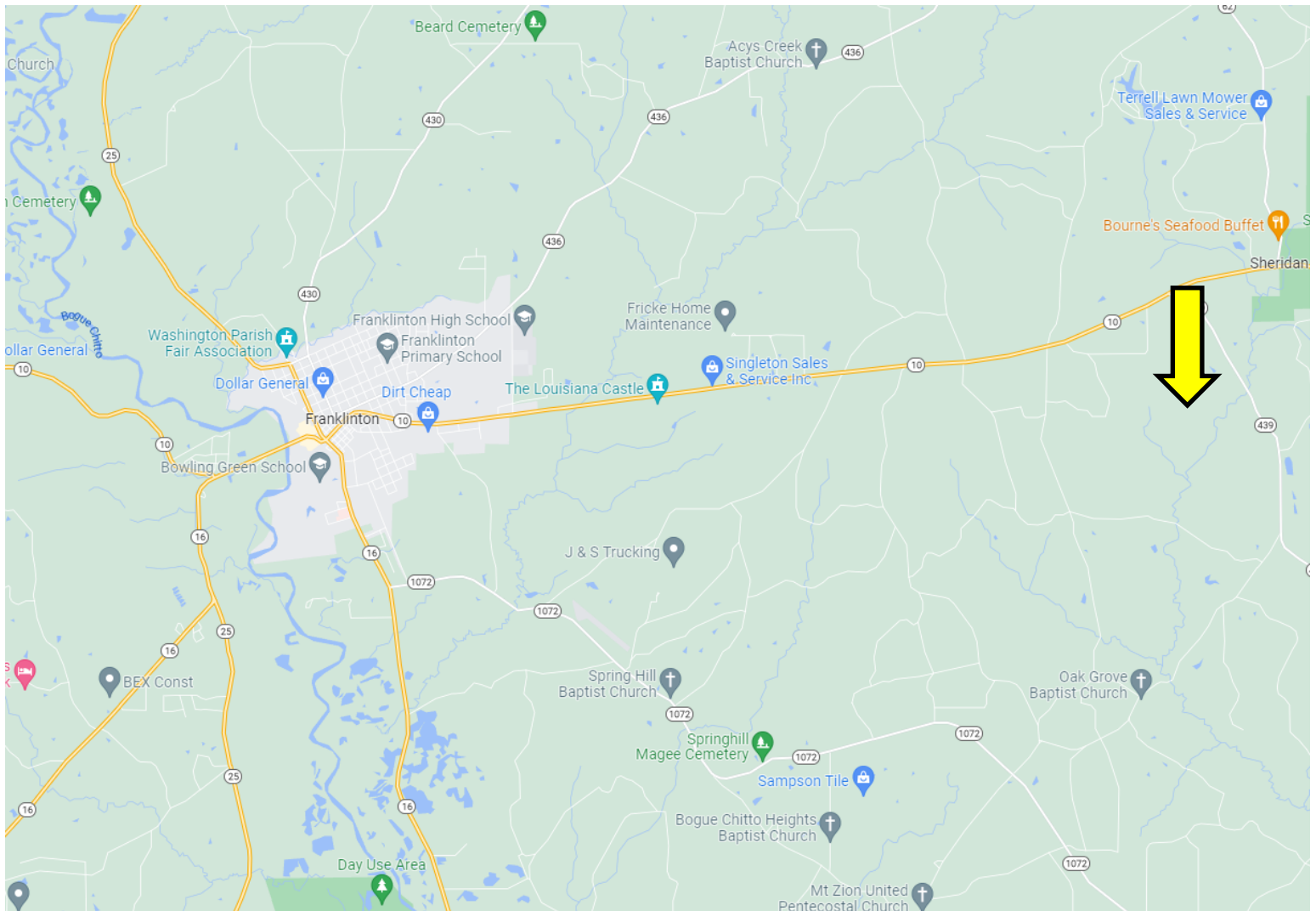


Expect More. Get More.

TomSmithLandandHomes.com

Information is believed to be accurate but not guaranteed.

Directional Map



GOOGLE MAP LINK

Directions from the intersection of Main St and LA-10 in Franklinton, LA: Travel east on LA-10E, in 8.3 miles, turn right onto LA-439E, in 1.1 miles, turn right onto Hobgood Dr, in 299 feet, take a slight left onto Easy Way, the property starts at the end of Easy Way on the left.

Call me today!

PRESTON SMITH, MANAGING BROKER
Preston@TomSmithLand.com
601.990.5070 **office** | 601.209.7150 **cell**



Expect More. Get More.

TomSmithLandandHomes.com

Information is believed to be accurate but not guaranteed.