

Commercial Property In Waynesboro, MS

1.5± Acres in Wayne County, MS

\$130,000



Don't miss out on this incredible commercial property opportunity located in Wayne County, MS! Located on 1.5+/- acres with a metal building of approximately 12,000 Square feet. Men and women's restrooms are in the front and back of the building, with two stalls in each restroom. In addition, there is a huge open space in the middle of the building. Four pool tables will be sold with the property. In addition, there is a large kitchen space that needs appliances. Call Travis Smith today for your private viewing!

DIRECTIONS FROM FOUR WAY STOP OF HWY 84 and HWY 145 IN WAYNESBORO, MS: Travel west on Hwy 84 for 1.3 miles then Take the exit toward Old Hwy 84 Rd W/Woodard Switch Rd then Turn right onto Old Hwy 84 Rd W/Woodard Switch Rd and travel for 1.7 miles. Then Continue straight onto Waynesboro Shubuta Rd for 4 miles. Turn left onto Fred West Rd and the destination will be on the left in 230ft.

[GOOGLE MAP LINK](#)



Call me today!

TRAVIS SMITH, REALTOR®
Travis@TomSmithLand.com
601.898.2772 **office** | 601.600.0428 **cell**



TomSmithLandandHomes.com

Information is believed to be accurate but not guaranteed.



Call me today!

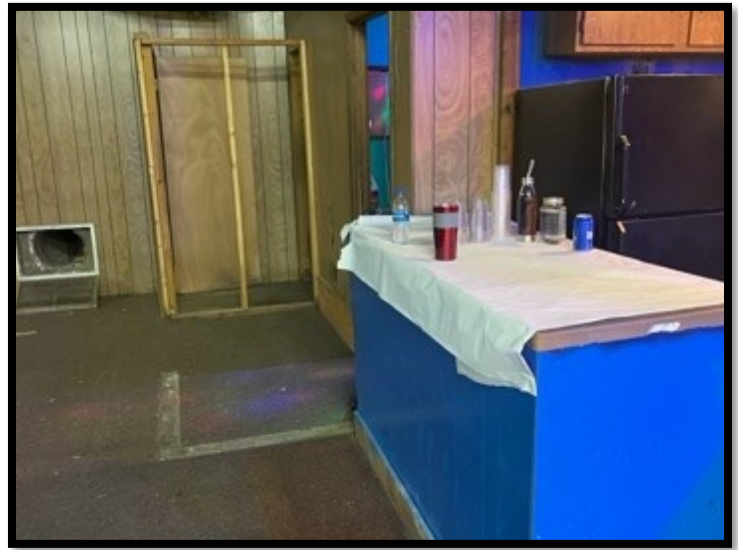
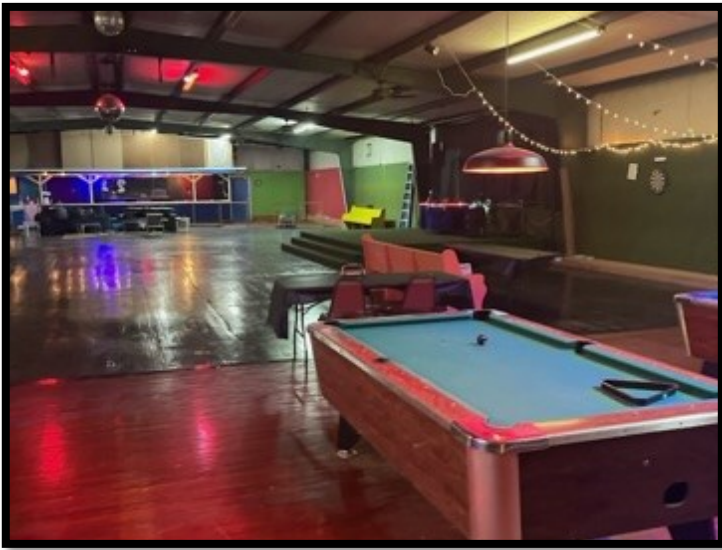


TRAVIS SMITH, REALTOR®
 Travis@TomSmithLand.com
 601.898.2772 **office** | 601.600.0428 **cell**



TomSmithLandandHomes.com

Information is believed to be accurate but not guaranteed.



Call me today!



TRAVIS SMITH, REALTOR®
 Travis@TomSmithLand.com
 601.898.2772 **office** | 601.600.0428 **cell**



TomSmithLandandHomes.com

Information is believed to be accurate but not guaranteed.

AERIAL MAP



CLICK [HERE](#) FOR AN INTERACTIVE MAP

Call me today!

TRAVIS SMITH, REALTOR®
Travis@TomSmithLand.com
601.898.2772 **office** | 601.600.0428 **cell**

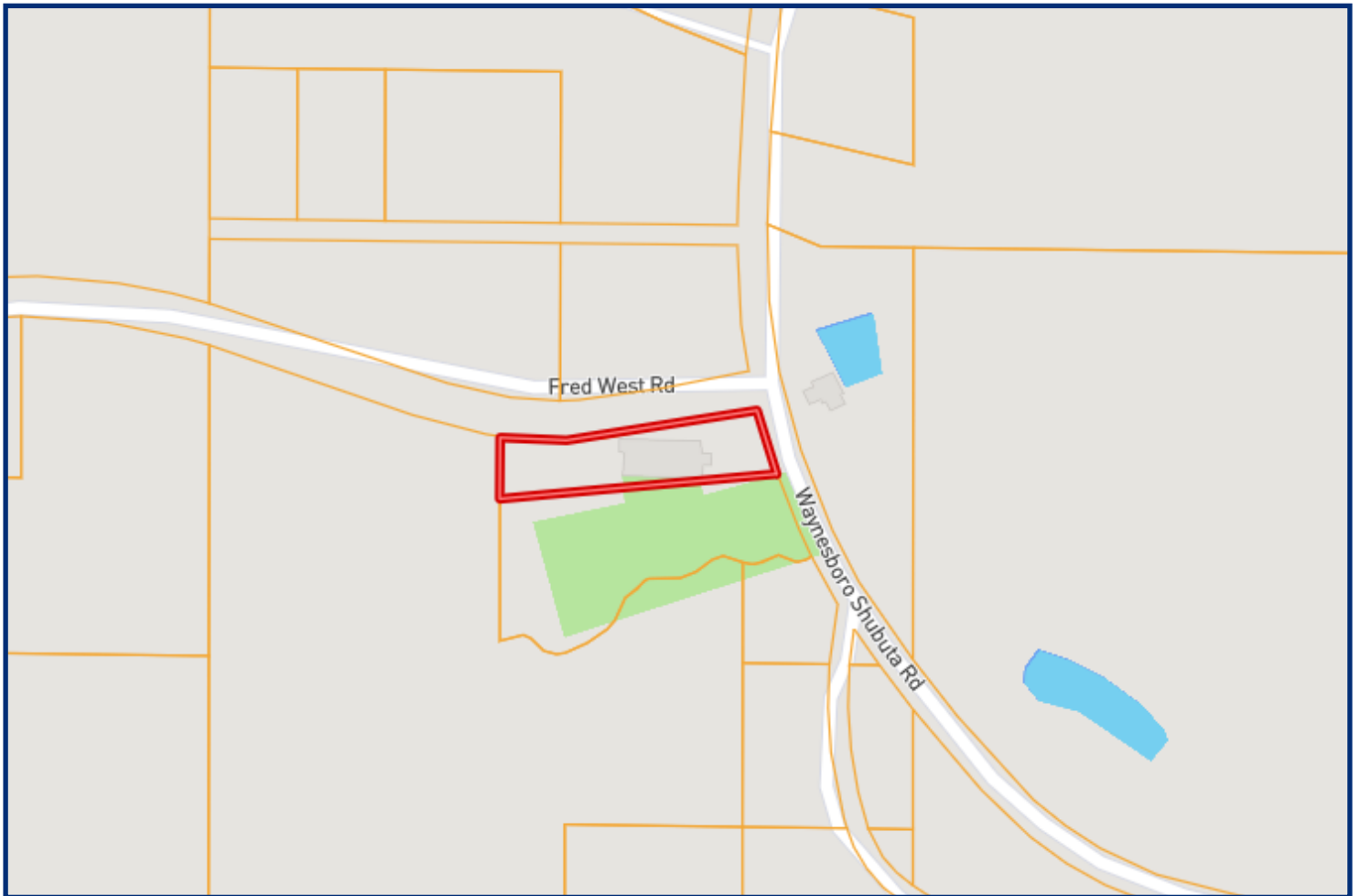


Expect More. Get More.

TomSmithLandandHomes.com

Information is believed to be accurate but not guaranteed.

OWNERSHIP MAP



*Call me
today!*

TRAVIS SMITH, REALTOR®
Travis@TomSmithLand.com
601.898.2772 **office** | 601.600.0428 **cell**

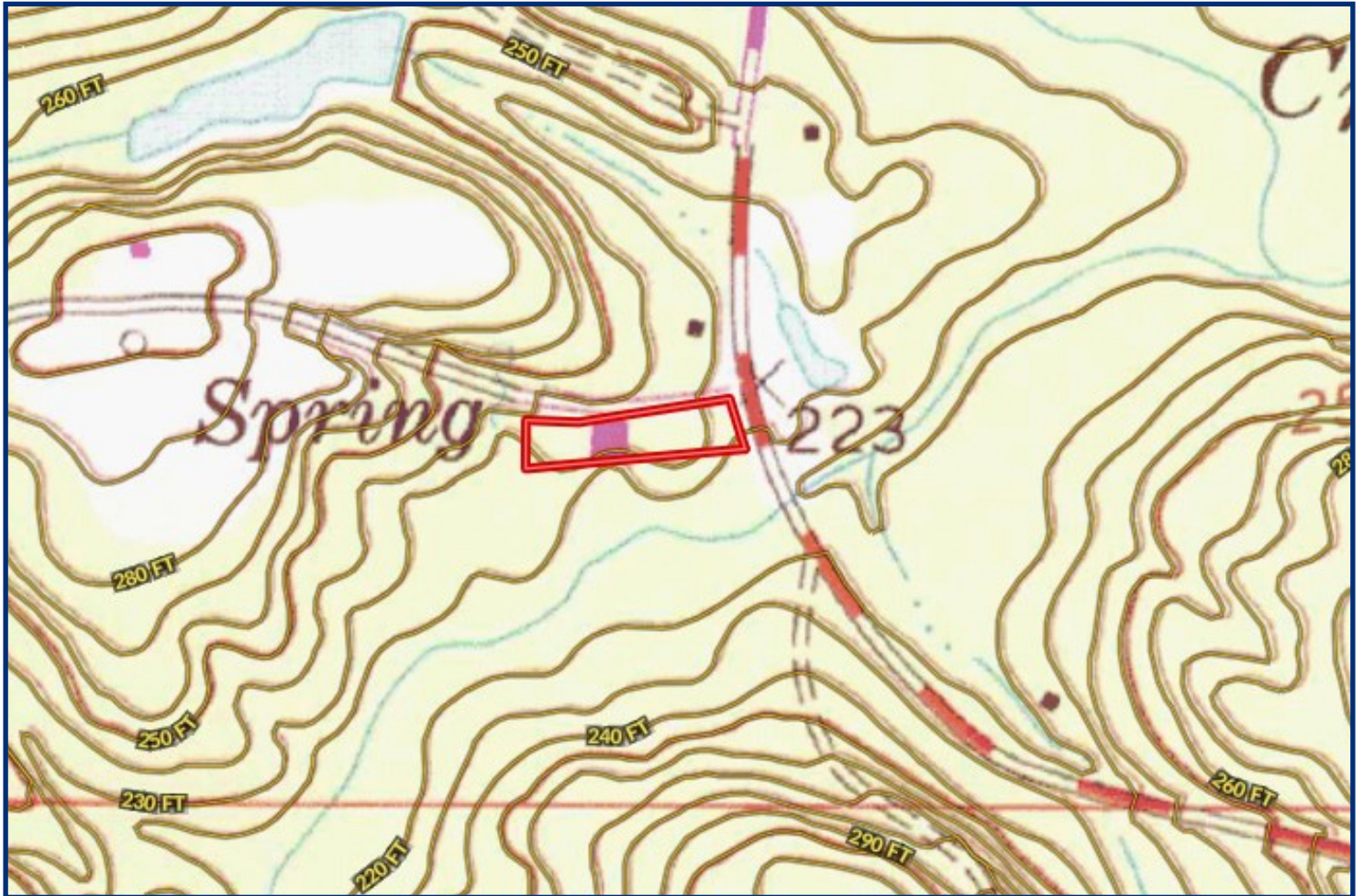


Expect More. Get More.

TomSmithLandandHomes.com

Information is believed to be accurate but not guaranteed.

TOPO MAP



*Call me
today!*

TRAVIS SMITH, REALTOR®
Travis@TomSmithLand.com
601.898.2772 **office** | 601.600.0428 **cell**

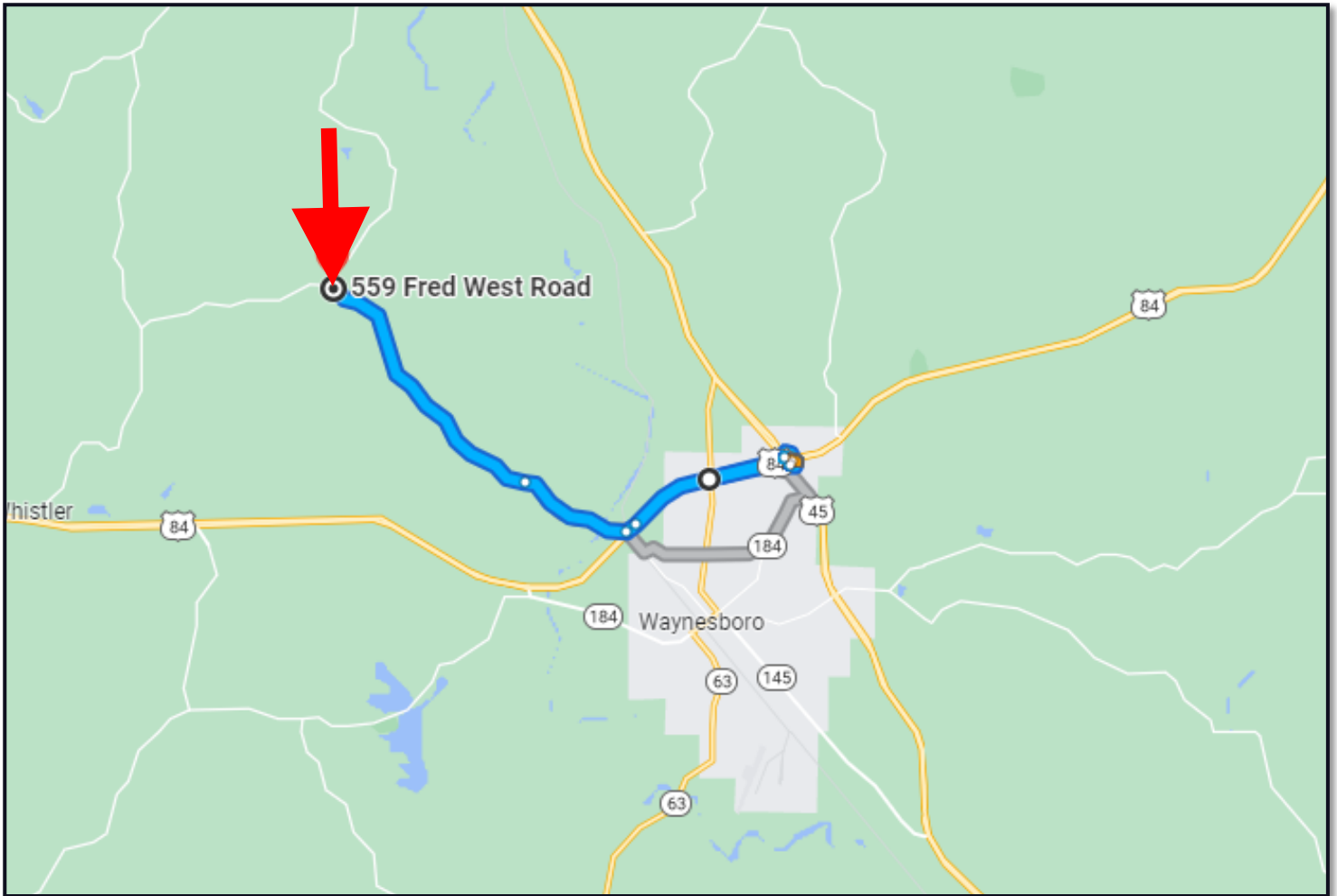


Expect More. Get More.

TomSmithLandandHomes.com

Information is believed to be accurate but not guaranteed.

DIRECTIONAL MAP



DIRECTIONS FROM FOUR WAY STOP OF HWY 84 and HWY 145 IN WAYNESBORO, MS: Travel west on Hwy 84 for 1.3 miles then Take the exit toward Old Hwy 84 Rd W/Woodard Switch Rd then Turn right onto Old Hwy 84 Rd W/Woodard Switch Rd and travel for 1.7 miles. Then Continue straight on to Waynesboro Shubuta Rd for 4 miles. Turn left onto Fred West Rd and the destination will be on the left in 230ft.

[GOOGLE MAP LINK](#)



Call me today!

TRAVIS SMITH, REALTOR®
Travis@TomSmithLand.com
601.898.2772 **office** | 601.600.0428 **cell**



TomSmithLandandHomes.com

Information is believed to be accurate but not guaranteed.