

Commercial Property in Great Location

0.4± Acres in Wayne County, MS



This Wayne County commercial property is a great opportunity for a growing business. There are approximately 0.4± acres of fenced in open parking space with two gated entrances. There is road frontage on Azaela Dr and Turner St. The property also offers a 20ftx20ft storage shed. The building is approximately 1,400 Sq. ft., with opportunity around every corner. As you walk into the space, you enter the main area, approximately 600 sq. ft., with a wide array of uses. There is one bathroom, and the space was previously used as a car lot and has been used as a restaurant. Two separate rooms on one side of the building could be used as offices. A space that could be used for a kitchen needs appliances. A screened-in area that would be great for additional storage/cooking. This property is a great investment or start to your local business. Call Travis Smith today for your private showing.

[Google Maps Link](#)

Call me today!



TRAVIS SMITH, REALTOR®
Travis@TomSmithLand.com
601.898.2772 **office** | 601.600.0428 **cell**



TomSmithLandandHomes.com

Information is believed to be accurate but not guaranteed.



Call me today!



TRAVIS SMITH, REALTOR®
 Travis@TomSmithLand.com
 601.898.2772 **office** | 601.600.0428 **cell**

Tom Smith
LAND AND HOMES

Expect More. Get More.

TomSmithLandandHomes.com

Information is believed to be accurate but not guaranteed.



Call me today!



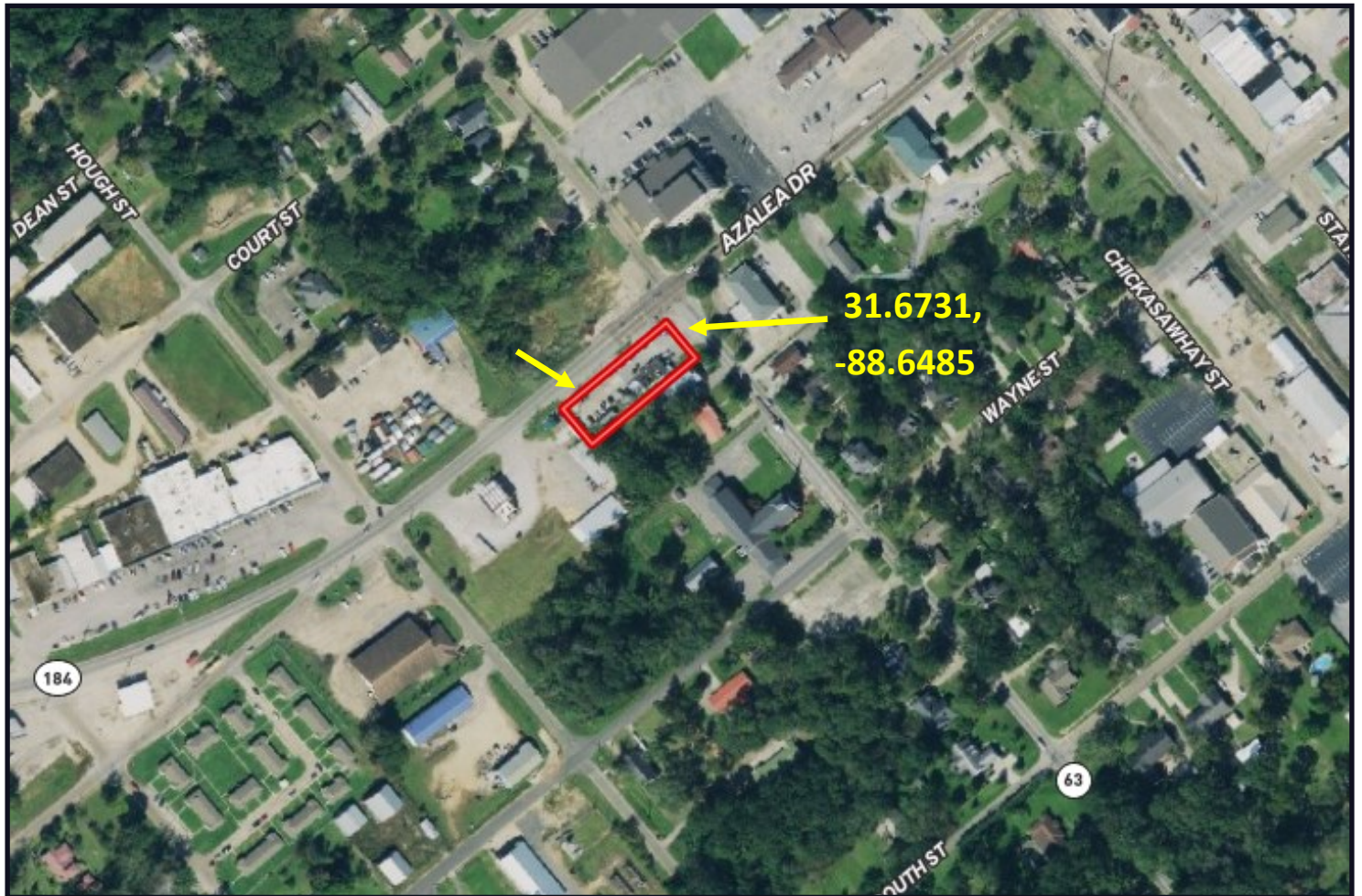
TRAVIS SMITH, REALTOR®
 Travis@TomSmithLand.com
 601.898.2772 **office** | 601.600.0428 **cell**



TomSmithLandandHomes.com

Information is believed to be accurate but not guaranteed.

AERIAL MAP



CLICK [HERE](#) FOR AN INTERACTIVE MAP

Call me today!

TRAVIS SMITH, REALTOR®
Travis@TomSmithLand.com
601.898.2772 **office** | 601.600.0428 **cell**

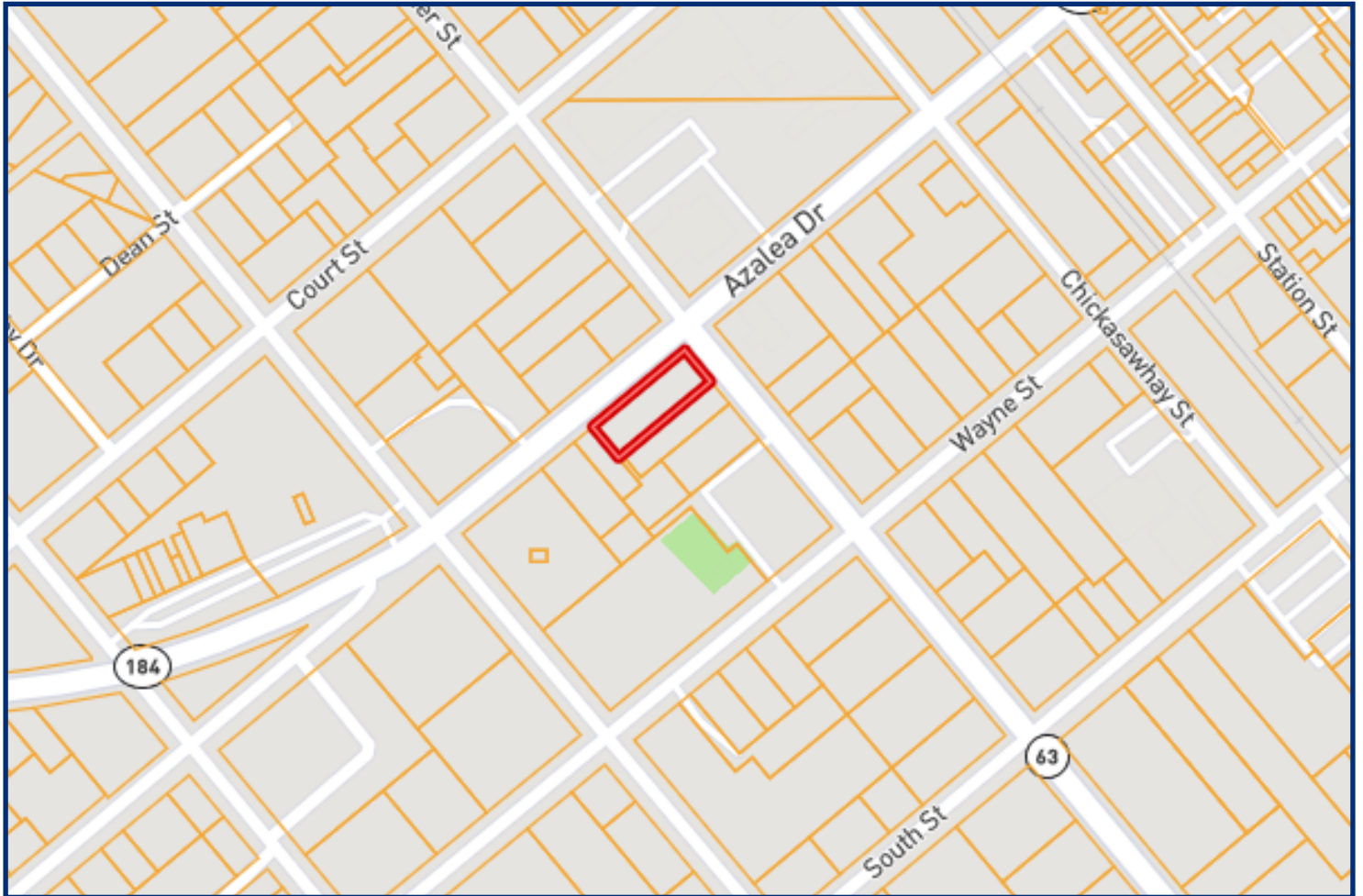


Expect More. Get More.

TomSmithLandandHomes.com

Information is believed to be accurate but not guaranteed.

OWNERSHIP MAP



*Call me
today!*

TRAVIS SMITH, REALTOR®
Travis@TomSmithLand.com
601.898.2772 **office** | 601.600.0428 **cell**

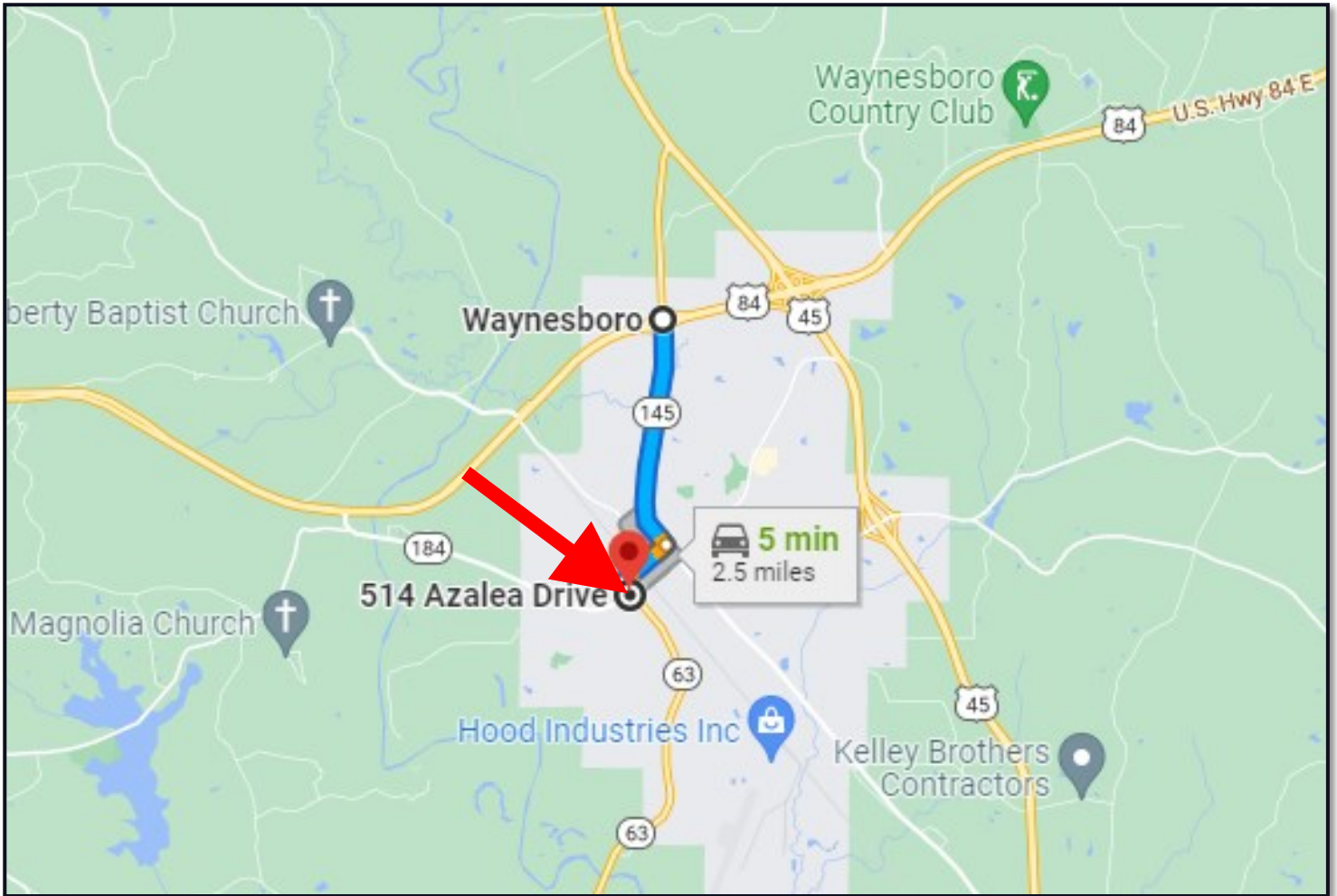


Expect More. Get More.

TomSmithLandandHomes.com

Information is believed to be accurate but not guaranteed.

DIRECTIONAL MAP



DIRECTIONS FROM FOUR WAY STOP OF HWY 84 and HWY 145 IN WAYNESBORO, MS:
Travel Hwy 145 south for 1.9 miles then turn right onto Court St and travel for 0.5 miles then turn left onto Turner St and travel for 0.1 miles turn right at first cross street onto Azalea and the destination is 150ft on the left.

[GOOGLE MAP LINK](#)



Call me today!

TRAVIS SMITH, REALTOR®
Travis@TomSmithLand.com
601.898.2772 **office** | 601.600.0428 **cell**



TomSmithLandandHomes.com

Information is believed to be accurate but not guaranteed.