

RV Park in Waynesboro, MS

3± Acres in Wayne County, MS



This Wayne County, 3+ acre tract is the perfect investment. It is an investors dream with twelve hook ups already in place for RVs. There is a live creek on the south side of the property. The property also has an office/storage building that could be turned into a bathhouse. This is a great opportunity to start making passive income. Call Travis Smith today for your private viewing!

DIRECTIONS FROM FOUR WAY STOP OF HWY 84 and HWY 145 IN WAYNESBORO, MS: Travel west on Hwy 84 for 1.3 miles then Take the exit toward Old Hwy 84 Rd W/Woodard Switch Rd then Turn right onto Old Hwy 84 Rd W/Woodard Switch Rd and travel for 1.7 miles. Then Continue straight onto Waynesboro Shubuta Rd for 4 miles. Turn left onto Fred West Rd and the destination will be on the left in 230ft.

[GOOGLE MAP LINK](#)



Call me today!

TRAVIS SMITH, REALTOR®
Travis@TomSmithLand.com
601.898.2772 **office** | 601.600.0428 **cell**



TomSmithLandandHomes.com

Information is believed to be accurate but not guaranteed.



Call me today!



TRAVIS SMITH, REALTOR®
Travis@TomSmithLand.com
601.898.2772 **office** | 601.600.0428 **cell**



Expect More. Get More.

TomSmithLandandHomes.com

Information is believed to be accurate but not guaranteed.

AERIAL MAP



CLICK [HERE](#) FOR AN INTERACTIVE MAP

Call me today!

TRAVIS SMITH, REALTOR®
Travis@TomSmithLand.com
601.898.2772 **office** | 601.600.0428 **cell**

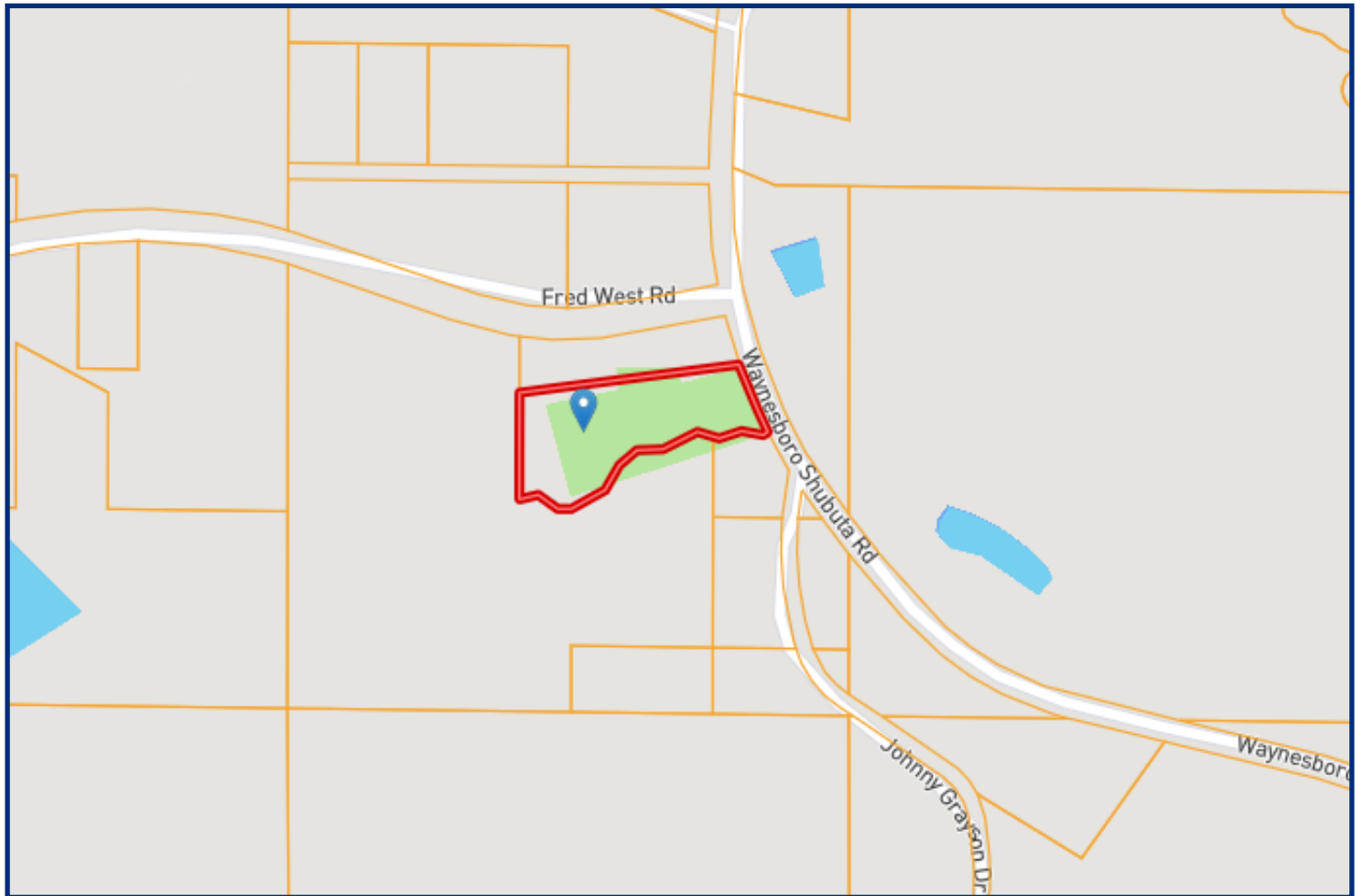


Expect More. Get More.

TomSmithLandandHomes.com

Information is believed to be accurate but not guaranteed.

OWNERSHIP MAP



*Call me
today!*

TRAVIS SMITH, REALTOR®
Travis@TomSmithLand.com
601.898.2772 **office** | 601.600.0428 **cell**

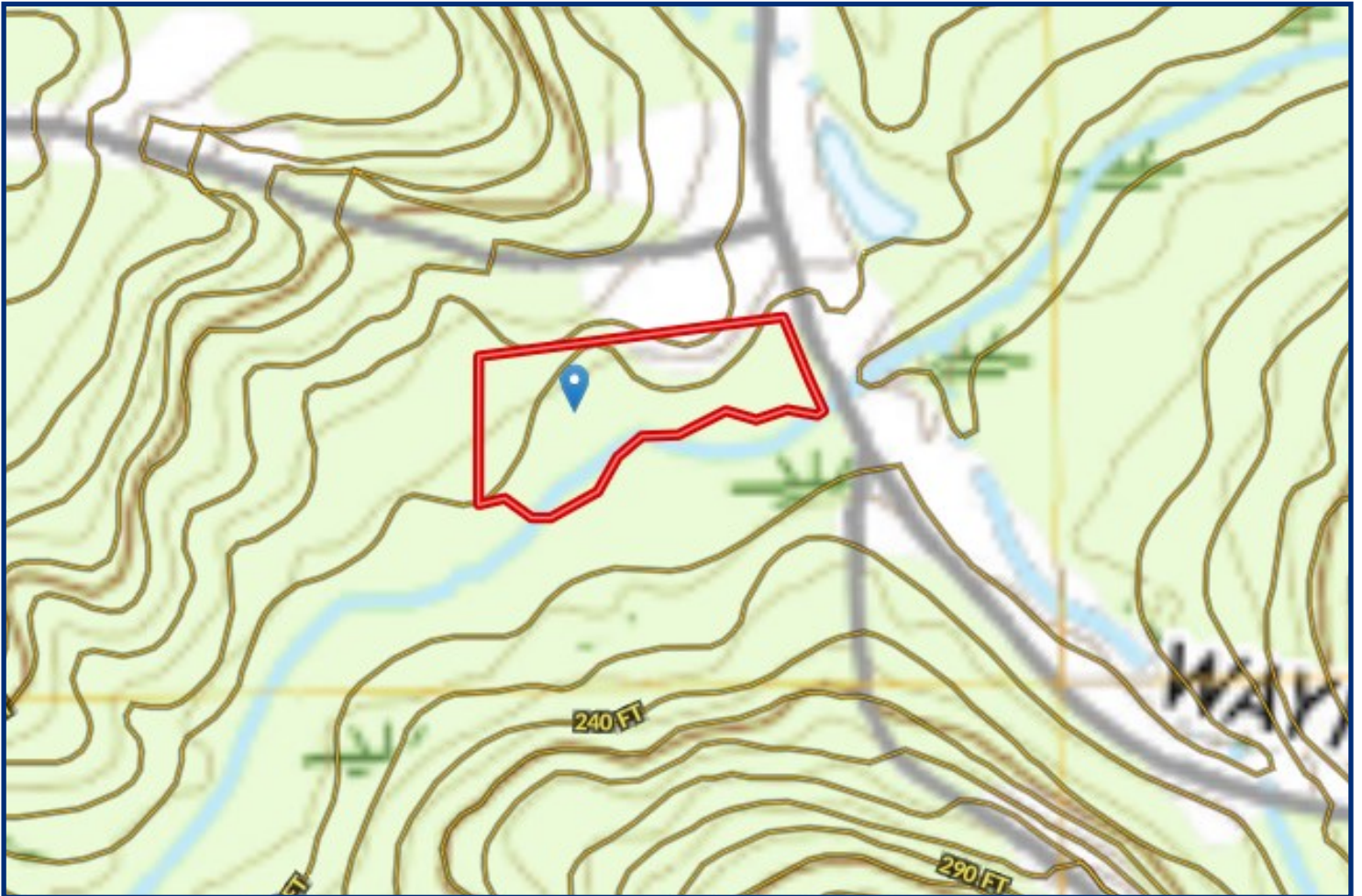


Expect More. Get More.

TomSmithLandandHomes.com

Information is believed to be accurate but not guaranteed.

TOPO MAP



*Call me
today!*

TRAVIS SMITH, REALTOR®
Travis@TomSmithLand.com
601.898.2772 **office** | 601.600.0428 **cell**

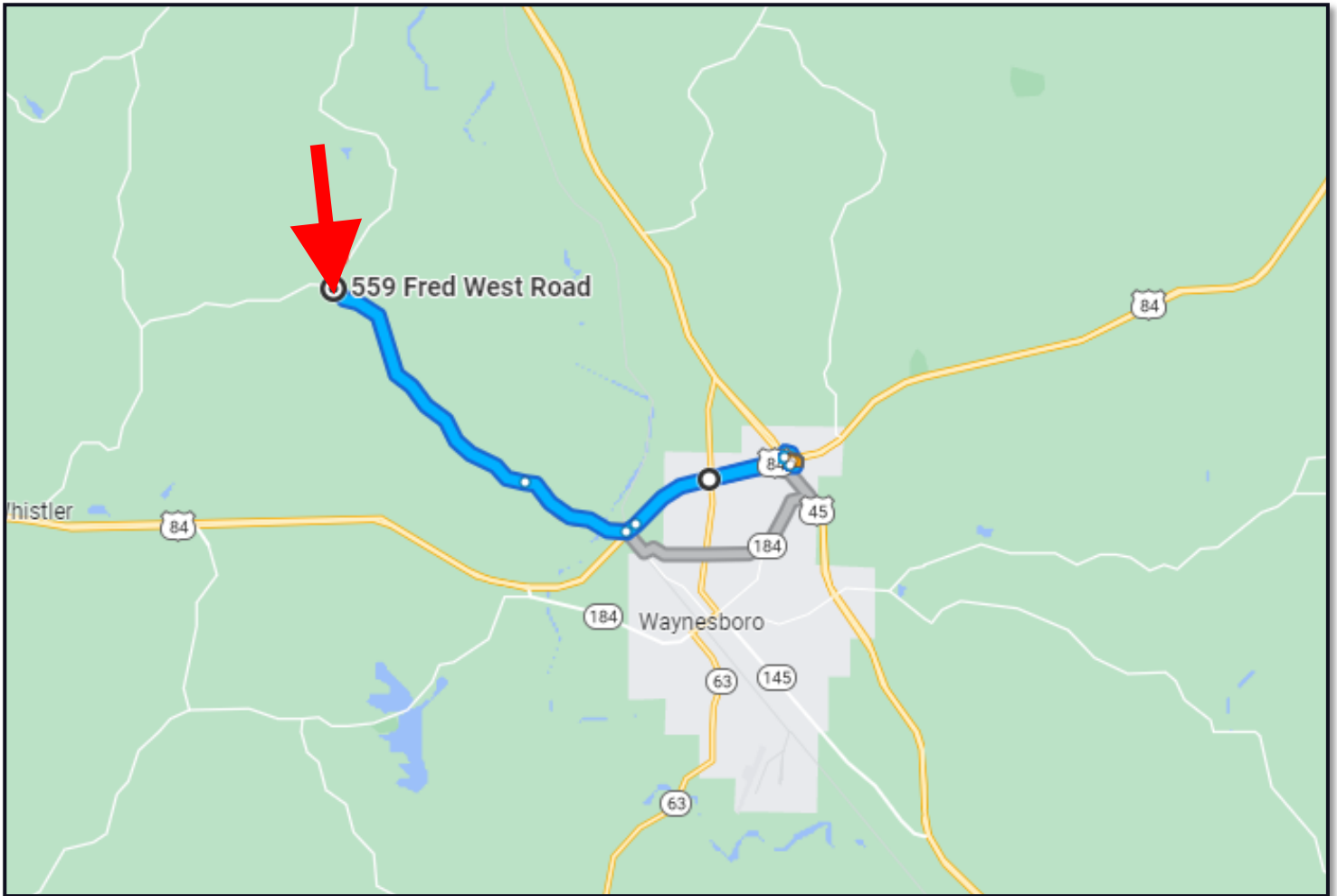


Expect More. Get More.

TomSmithLandandHomes.com

Information is believed to be accurate but not guaranteed.

DIRECTIONAL MAP



DIRECTIONS FROM FOUR WAY STOP OF HWY 84 and HWY 145 IN WAYNESBORO, MS:
Travel west on Hwy 84 for 1.3 miles then Take the exit toward Old Hwy 84 Rd W/Woodard Switch Rd then Turn right onto Old Hwy 84 Rd W/Woodard Switch Rd and travel for 1.7 miles. Then Continue straight onto Waynesboro Shubuta Rd for 4 miles. Turn left onto Fred West Rd and the destination will be on the left in 230ft.

[GOOGLE MAP LINK](#)



Call me today!

TRAVIS SMITH, REALTOR®
Travis@TomSmithLand.com
601.898.2772 **office** | 601.600.0428 **cell**



TomSmithLandandHomes.com

Information is believed to be accurate but not guaranteed.