

14.34+/- Acre Recreational Opportunity Oktibbeha County, MS

[Interactive Map](#)



\$20,076

Take a look at this 14.34+/- acre recreational property located in Oktibbeha County, MS. This property is located on 16th section land and would be a great small, turnkey hunting property for the busy professional. The ownership is structured as a long-term lease that expires in 2046. The new tenant will have the first option when the current lease expires. The tenant will be responsible for a \$500 annual expense to Oktibbeha County. The property features frontage on Watson Road, one moderate size food plot (ready to be planted), and large timber that provides a great canopy for wildlife. This property also includes two ladder stands in place and waiting on you! Utilities are available on Watson Road. 2021 Taxes: \$86. For more information or to schedule a private showing, call Harper Day!

Directions from the intersection of Hwy 25 and Hwy 12: Travel on Hwy 12 SW for 13 miles. Turn left on Louisville Rd and take the next left onto Craig Springs Rd. Travel 0.5miles then right on Woodson Road. Property will be on your right!



Call me today!

HARPER DAY, REALTOR®
Harper@TomSmithLand.com
662.268.6333 office | 662.694.9751 cell



Expect More. Get More.

TomSmithLandandHomes.com

Information is believed to be accurate but not guaranteed.



Call me today!

HARPER DAY, REALTOR®
Harper@TomSmithLand.com
662.268.6333 office | 662.694.9751 cell



Expect More. Get More.

TomSmithLandandHomes.com

Information is believed to be accurate but not guaranteed.



Call me today!

HARPER DAY, REALTOR®
Harper@TomSmithLand.com
662.268.6333 office | 662.694.9751 cell



Expect More. Get More.

TomSmithLandandHomes.com

Information is believed to be accurate but not guaranteed.

Aerial Map



Call me today!

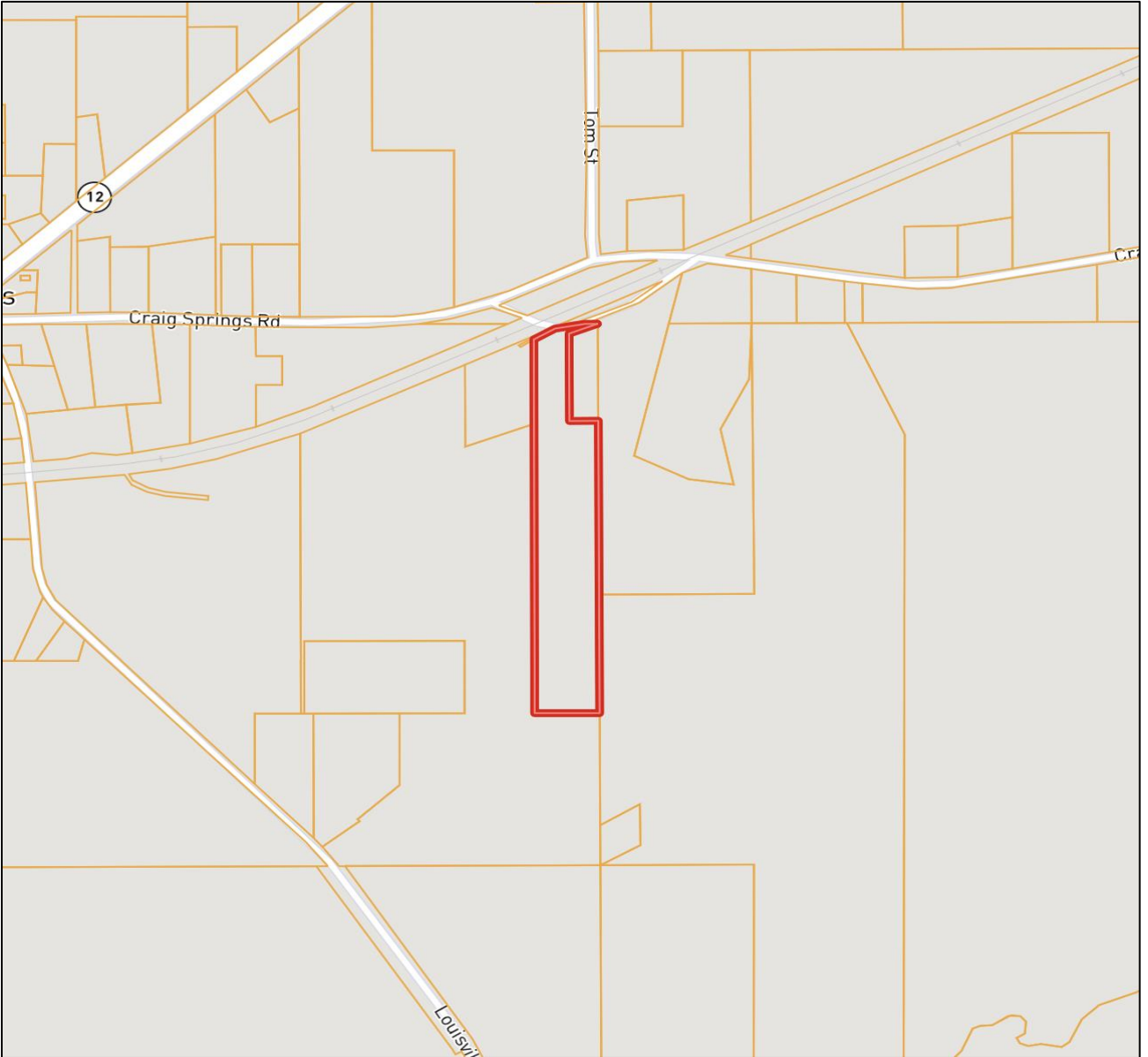
HARPER DAY, REALTOR®
Harper@TomSmithLand.com
662.268.6333 office | 662.694.9751 cell



TomSmithLandandHomes.com

Information is believed to be accurate but not guaranteed.

Ownership Map



Call me today!

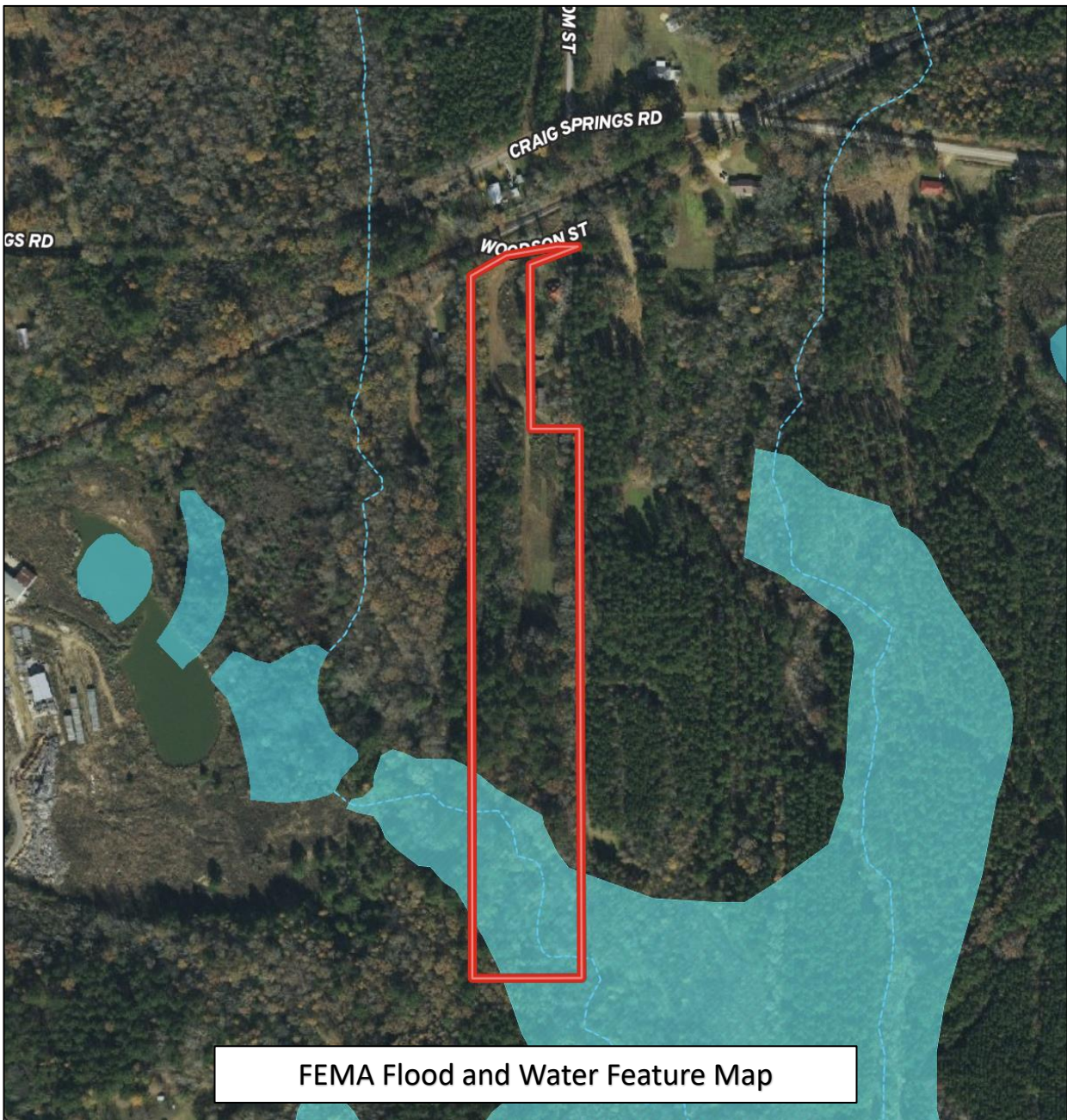
HARPER DAY, REALTOR®
Harper@TomSmithLand.com
662.268.6333 office | 662.694.9751 cell



Expect More. Get More.

TomSmithLandandHomes.com

Information is believed to be accurate but not guaranteed.



Call me today!

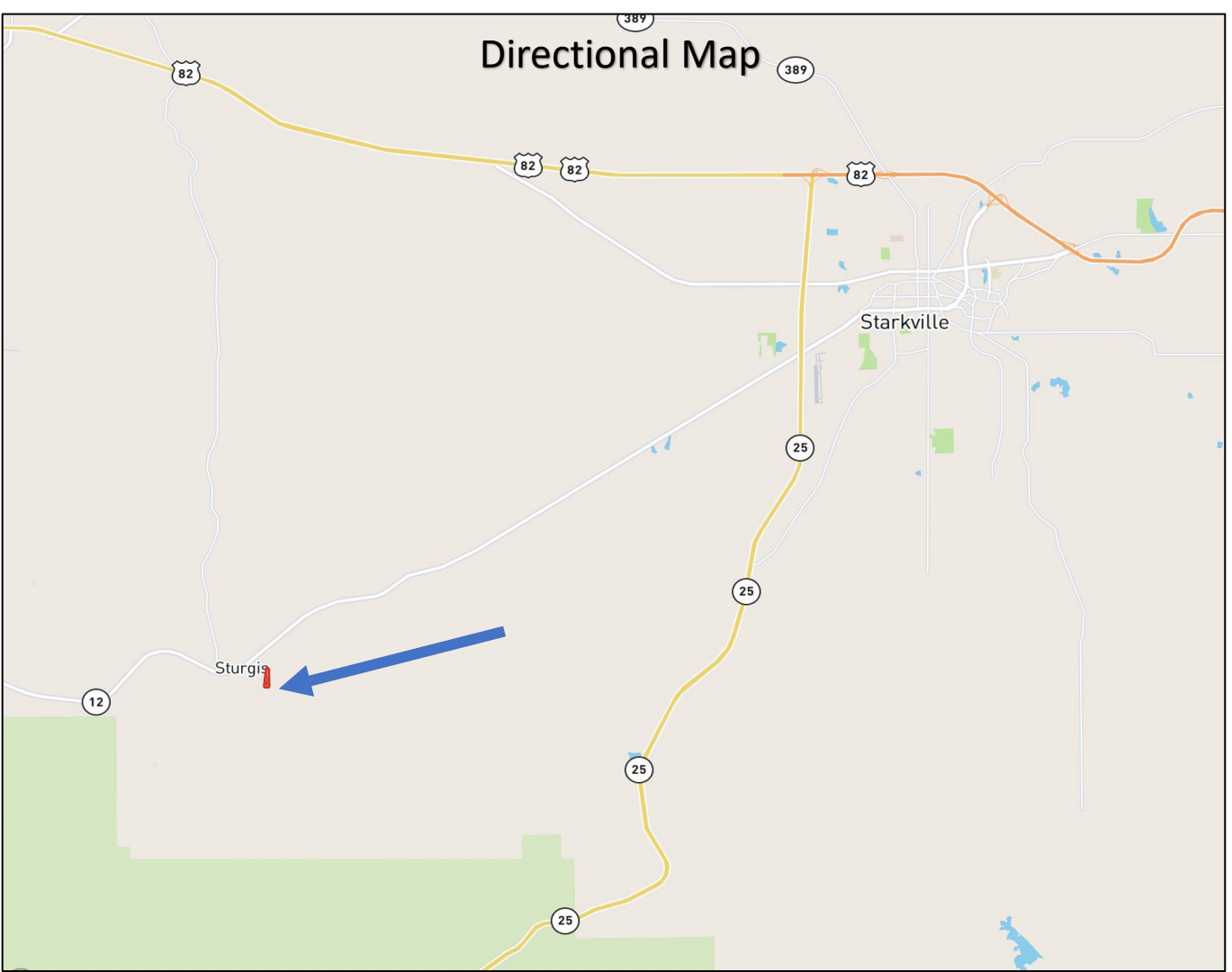
HARPER DAY, REALTOR®
Harper@TomSmithLand.com
662.268.6333 office | 662.694.9751 cell



TomSmithLandandHomes.com

Information is believed to be accurate but not guaranteed.

Directional Map



Google Map!

Directions from the intersection of Hwy 25 and Hwy 12:
Travel on Hwy 12 SW for 13 miles. Turn left on Louisville Rd and take the next left onto Craig Springs Rd. Travel 0.5 miles then right on Woodson Road. Property will be on your right!

Call me today!

HARPER DAY, REALTOR®
Harper@TomSmithLand.com
662.268.6333 office | 662.694.9751 cell



TomSmithLandandHomes.com

Information is believed to be accurate but not guaranteed.