

# Move-In Ready Home

**806 Thomas Street, Hollandale, MS 38748**  
**Washington County, MS**



**\$95,000**

This 1,200+/- sq ft Washington County, MS home features three bedrooms and two baths and is situated on a large, shaded lot with a spacious backyard. The kitchen is open to the dining room and living area and has a built-in oven and cooktop. The large backyard is fenced-in for your pets and privacy. This property has been well maintained and is move-in ready! Call Bruce to schedule your private showing today!

Directions from the Intersection of Hwy 61 and Hwy 12 in Hollandale, MS: Travel Hwy 12 for .6 miles. Turn right onto East Ave. and travel .8 miles. Turn left onto Martin Luther King Dr. and then take an immediate right onto Thomas St. After .2 miles the home will be on your right. Click for Directions: [806 Thomas St. Hollandale, MS 38748](#)



*Call me today!*

**BRUCE WEST, REALTOR®**  
Bruce@TomSmithLand.com  
662.441.2500 office | 662.873.3007 cell



**TomSmithLandandHomes.com**

Information is believed to be accurate but not guaranteed.



*Call me today!*

**BRUCE WEST**, REALTOR®  
Bruce@TomSmithLand.com  
662.441.2500 office | 662.873.3007 cell



**TomSmithLandandHomes.com**

Information is believed to be accurate but not guaranteed.





*Call me today!*

**BRUCE WEST**, REALTOR®  
Bruce@TomSmithLand.com  
662.441.2500 **office** | 662.873.3007 **cell**

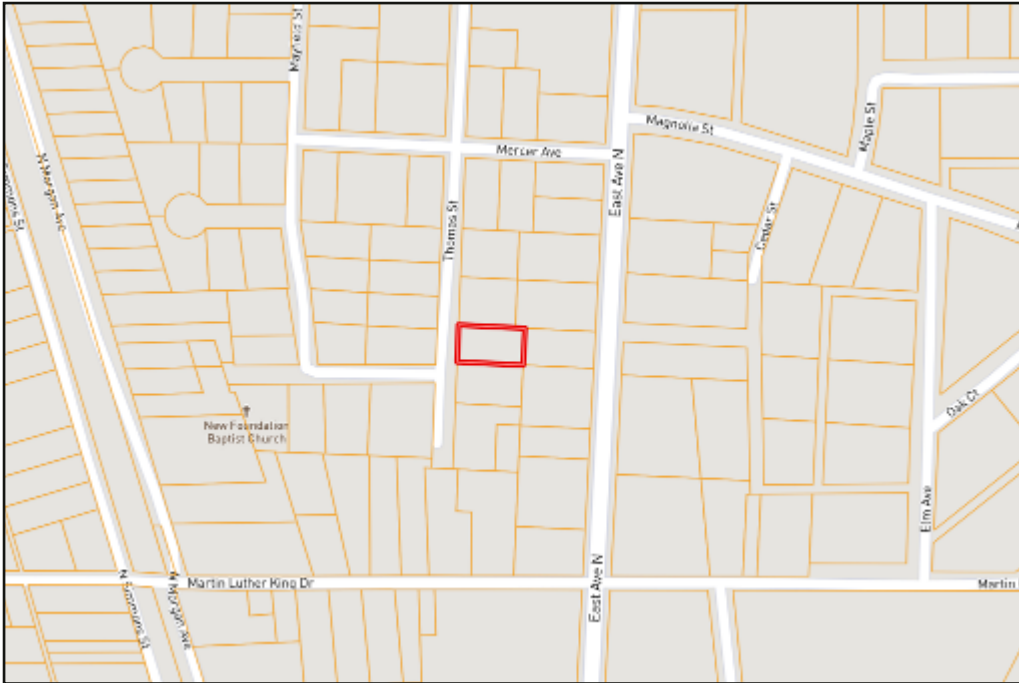


Expect More. Get More.



**TomSmithLandandHomes.com**

Information is believed to be accurate but not guaranteed.



# OWNERSHIP MAP

[Click Here for an  
Interactive Map](#)

# AERIAL MAP



*Call me today!*

**BRUCE WEST**, REALTOR\*  
Bruce@TomSmithLand.com  
662.441.2500 **office** | 662.873.3007 **cell**

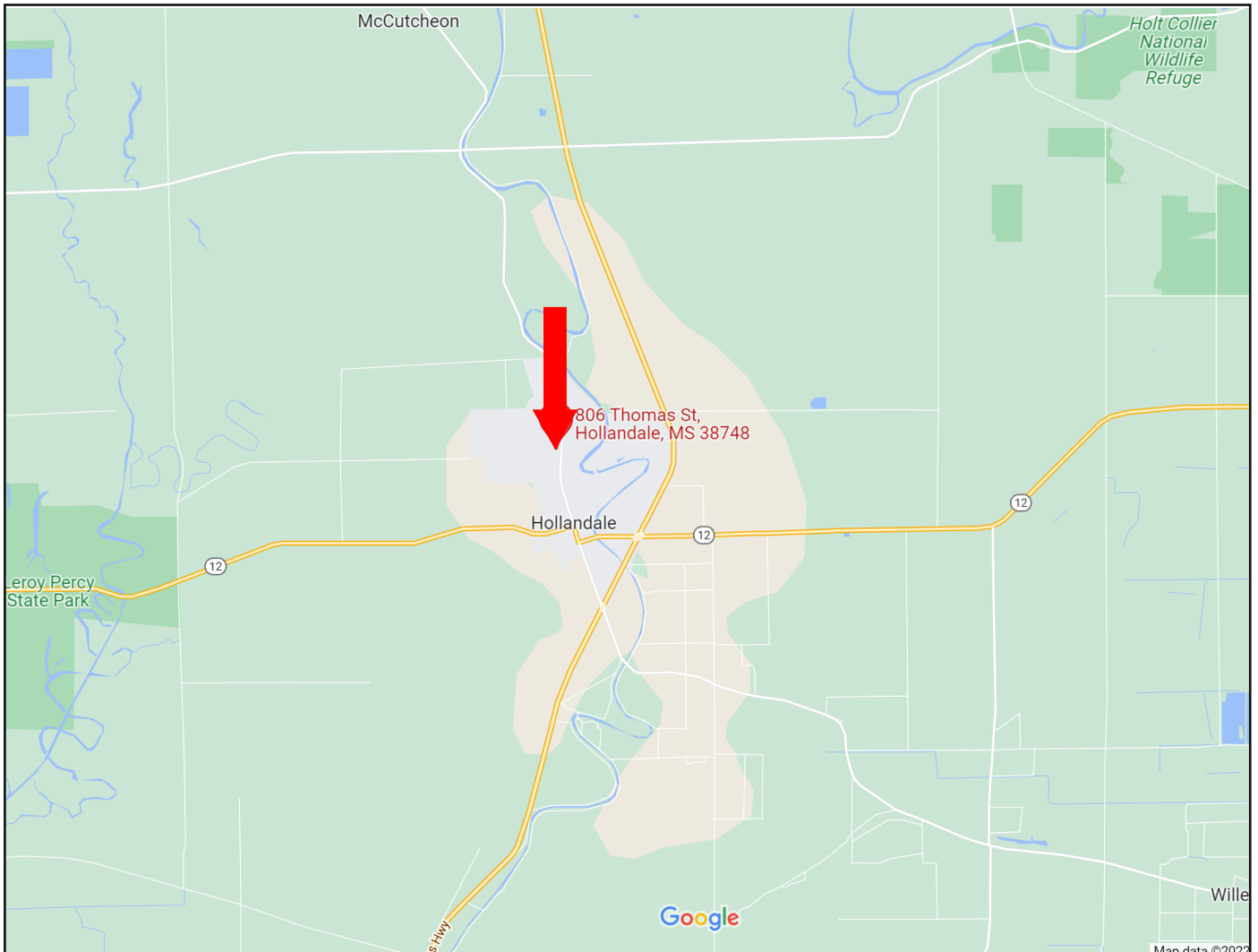


**TomSmithLandandHomes.com**

Information is believed to be accurate but not guaranteed.



# DIRECTIONAL MAP



**Directions from the Intersection of Hwy 61 and Hwy 12 in Hollandale, MS: Travel Hwy 12 for .6 miles. Turn right onto East Ave. and travel .8 miles. Turn left onto Martin Luther King Dr. and then take an immediate right onto Thomas St. After .2 miles the home will be on your right. Click for Directions: [806 Thomas St. Hollandale, MS 38748](#)**



*Call me today!*

**BRUCE WEST, REALTOR®**  
Bruce@TomSmithLand.com  
662.441.2500 office | 662.873.3007 cell



**TomSmithLandandHomes.com**

Information is believed to be accurate but not guaranteed.