

Move-In Ready Home

806 Thomas Street, Hollandale, MS 38748
Washington County, MS



\$88,500

This 1,200+/- sq ft Washington County, MS home features three bedrooms and two baths and is situated on a large, shaded lot with a spacious backyard. The kitchen is open to the dining room and living area and has a built-in oven and cooktop. The large backyard is fenced-in for your pets and privacy. This property has been well maintained and is move-in ready! Call Bruce to schedule your private showing today!

Directions from the Intersection of Hwy 61 and Hwy 12 in Hollandale, MS: Travel Hwy 12 for .6 miles. Turn right onto East Ave. and travel .8 miles. Turn left onto Martin Luther King Dr. and then take an immediate right onto Thomas St. After .2 miles the home will be on your right. Click for Directions: [806 Thomas St. Hollandale, MS 38748](#)



Call me today!

BRUCE WEST, REALTOR®
Bruce@TomSmithLand.com
662.441.2500 office | 662.873.3007 cell



TomSmithLandandHomes.com

Information is believed to be accurate but not guaranteed.



Call me today!

BRUCE WEST, REALTOR®
Bruce@TomSmithLand.com
662.441.2500 office | 662.873.3007 cell



TomSmithLandandHomes.com

Information is believed to be accurate but not guaranteed.



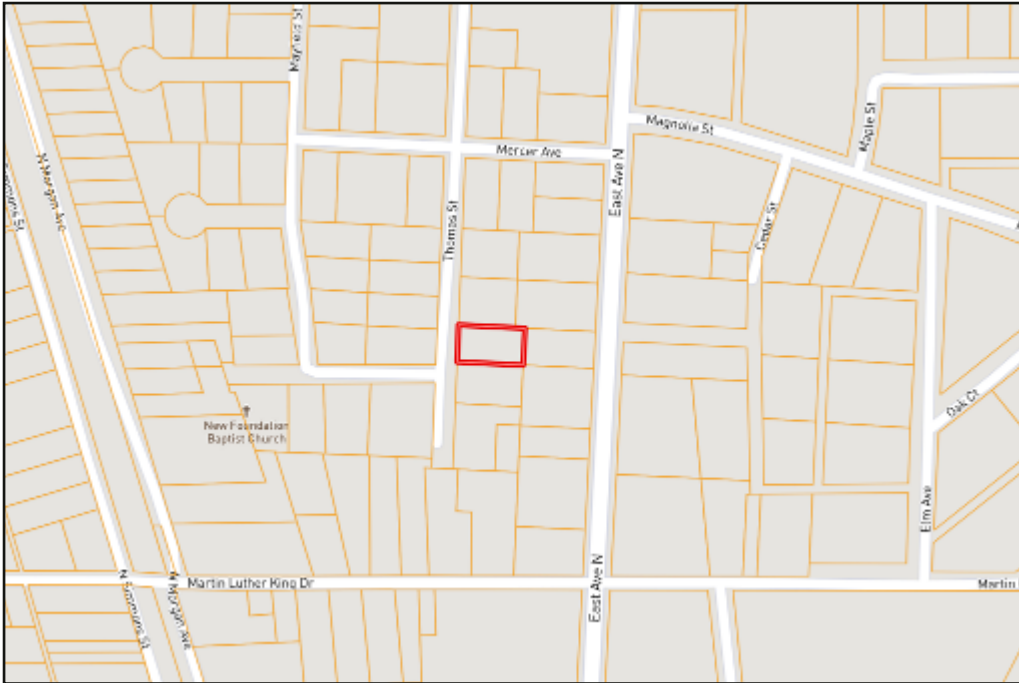
Call me today!

BRUCE WEST, REALTOR®
Bruce@TomSmithLand.com
662.441.2500 **office** | 662.873.3007 **cell**



TomSmithLandandHomes.com

Information is believed to be accurate but not guaranteed.



OWNERSHIP MAP

[Click Here for an
Interactive Map](#)

AERIAL MAP



Call me today!

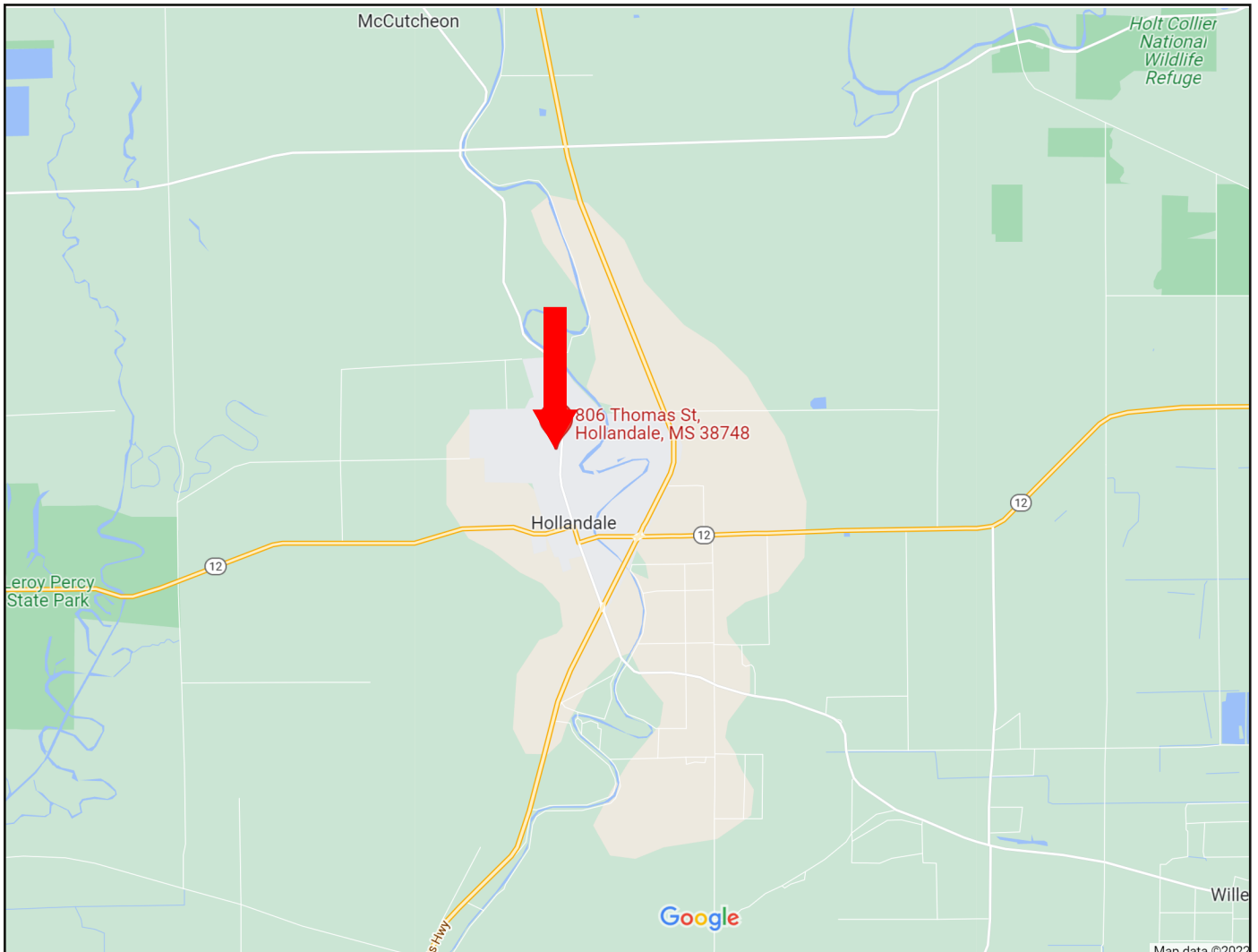
BRUCE WEST, REALTOR*
Bruce@TomSmithLand.com
662.441.2500 **office** | 662.873.3007 **cell**



TomSmithLandandHomes.com

Information is believed to be accurate but not guaranteed.

DIRECTIONAL MAP



Directions from the Intersection of Hwy 61 and Hwy 12 in Hollandale, MS: Travel Hwy 12 for .6 miles. Turn right onto East Ave. and travel .8 miles. Turn left onto Martin Luther King Dr. and then take an immediate right onto Thomas St. After .2 miles the home will be on your right. Click for Directions: [806 Thomas St. Hollandale, MS 38748](#)



Call me today!

BRUCE WEST, REALTOR®
Bruce@TomSmithLand.com
662.441.2500 office | 662.873.3007 cell



TomSmithLandandHomes.com

Information is believed to be accurate but not guaranteed.