

# .13+/- Acre Lot in Sun Chase Subdivision Rankin County, MS



000 Windchase Circle  
Brandon, MS 39042

**\$15,000**

*If you are looking to build in Brandon, MS, then the quiet and beautiful Sun Chase Subdivision is the place for you. Lot 24 Windchase Circle, Brandon, MS in Rankin, County is a .13+/- acre lot in a perfect place at a perfect price!! Located just minutes from Brandon, Pearl and the greater Jackson area this excellent lot is located on a small circle drive and is the perfect place to build and raise a family. Public utilities are available and H.O.A. dues and restrictions apply. Call Clif Cannon to schedule a viewing today!*

Directions from the intersection of MS-18 and US-20 Exit 54: Travel South on MS-18 for 2.7 miles. Turn right onto Dell Blvd and travel for .1 miles. Turn left onto Windchase Drive and trave for .3 miles. Turn left onto Windchase Circle, the property will be on the left.

[Google Maps](#)



*Call me today!*

**CLIF CANNON, REALTOR®**  
Clif@TomSmithLand.com  
601.990.5070 office | 601.565.1070 cell



**TomSmithLandandHomes.com**

Information is believed to be accurate but not guaranteed.





*Call me today!*

**CLIF GANNON, REALTOR**

Clif@TomSmithLand.com  
601.990.5070 office | 601.565.1070 cell



**TomSmithLandandHomes.com**

Information is believed to be accurate but not guaranteed.



# Aerial Map



[Interactive Map](#)

*Call me today!*

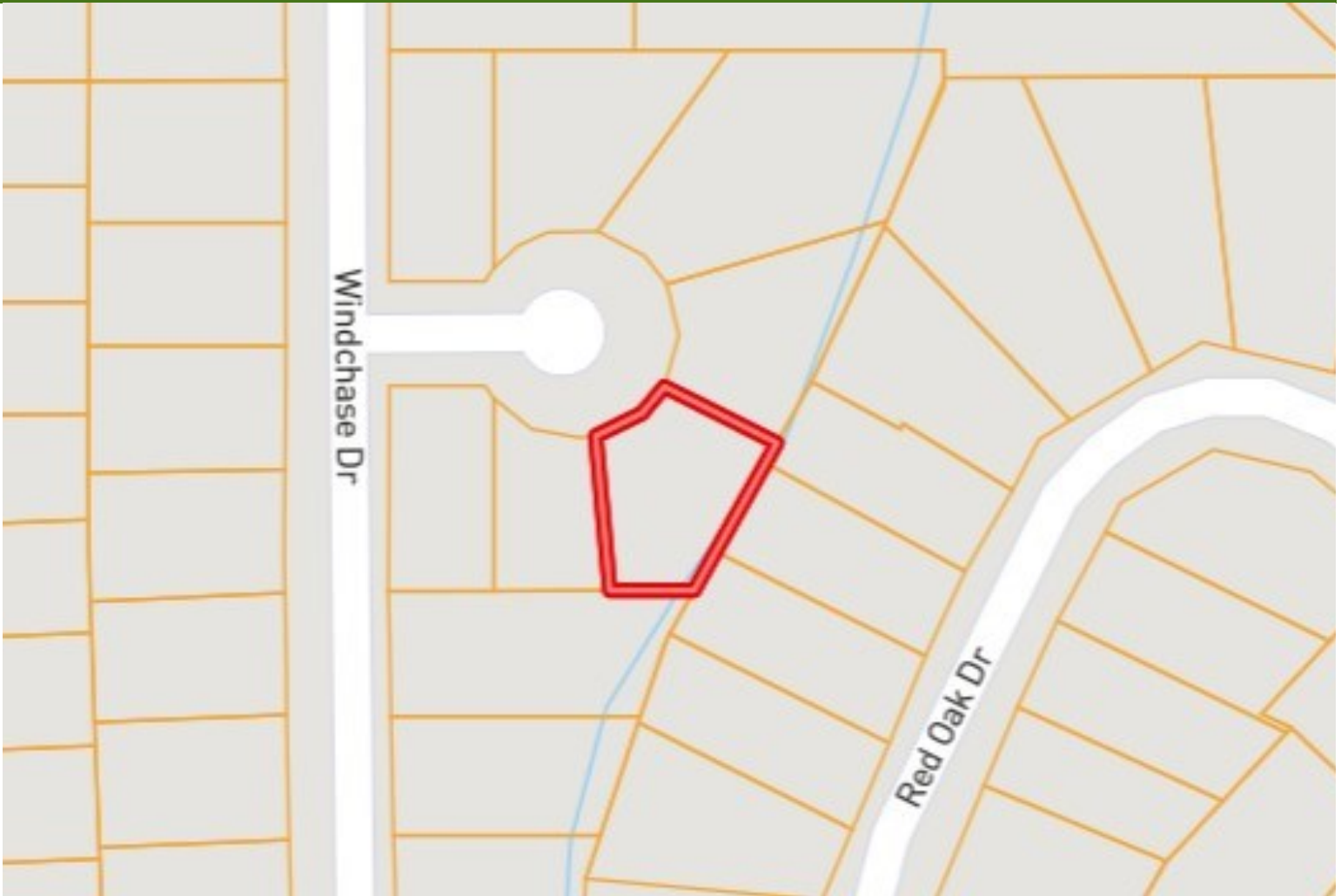
**CLIF CANNON, REALTOR®**  
Clif@TomSmithLand.com  
601.990.5070 **office** | 601.565.1070 **cell**



[TomSmithLandandHomes.com](http://TomSmithLandandHomes.com)

Information is believed to be accurate but not guaranteed.

# Ownership Map



Directions from the intersection of MS-18 and US-20 Exit 54: Travel South on MS-18 for 2.7 miles. Turn right onto Dell Blvd and travel for .1 miles. Turn left onto Windchase Drive and trave for .3 miles. Turn left onto Windchase Circle, the property will be on the left.

000 Windchase Circle  
Brandon, MS 39042

*Call me today!*

**CLIF CANNON, REALTOR®**  
Clif@TomSmithLand.com  
601.990.5070 **office** | 601.565.1070 **cell**

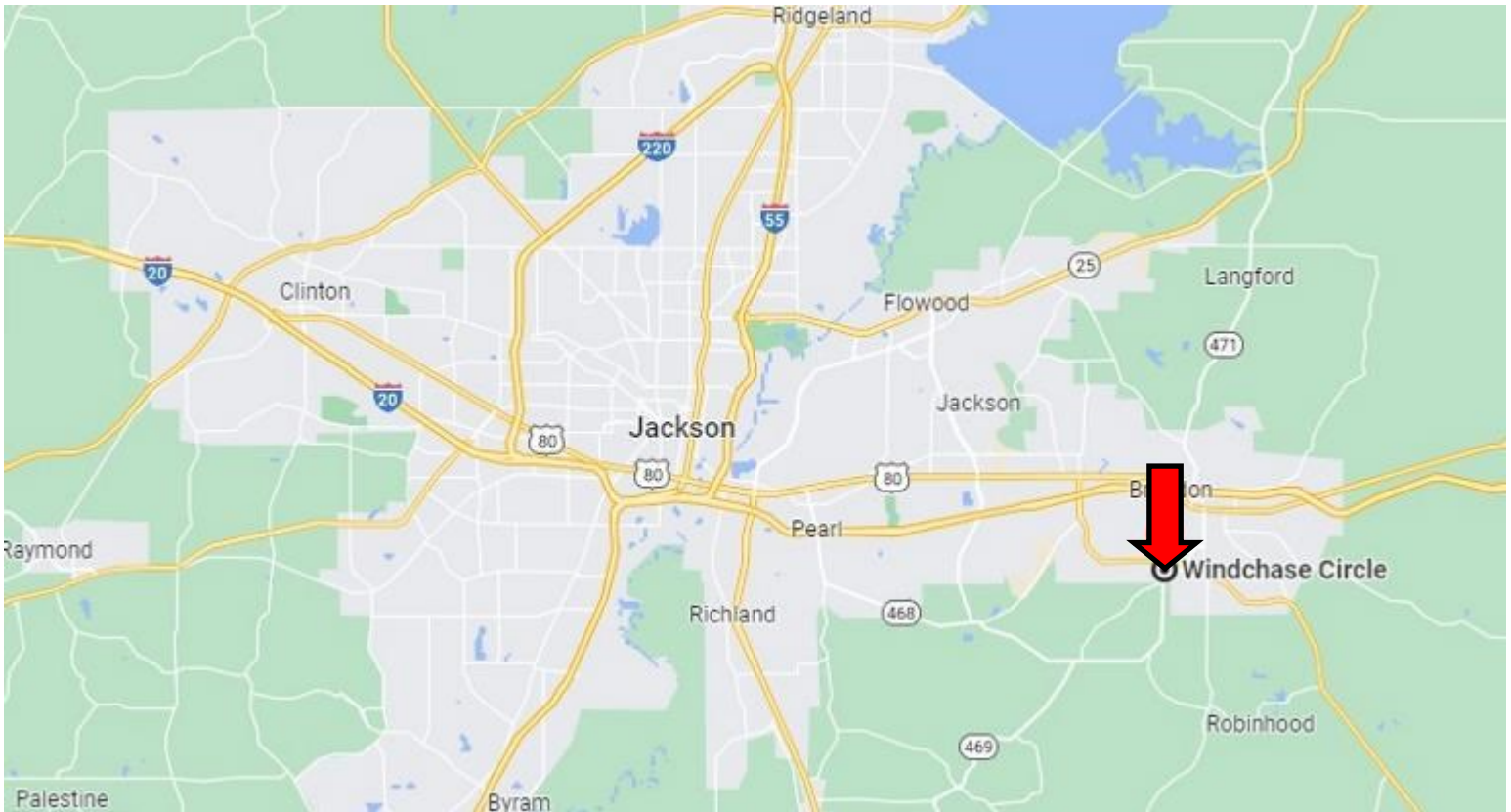


**TomSmithLandandHomes.com**

Information is believed to be accurate but not guaranteed.



# Directional Map



[Google Maps](#)

Directions from the intersection of MS-18 and US-20 Exit 54: Travel South on MS-18 for 2.7 miles. Turn right onto Dell Blvd and travel for .1 miles. Turn left onto Windchase Drive and travel for .3 miles. Turn left onto Windchase Circle, the property will be on the left.

000 Windchase Circle  
Brandon, MS 39042

*Call me today!*

**CLIF CANNON, REALTOR®**  
Clif@TomSmithLand.com  
601.990.5070 office | 601.565.1070 cell



**TomSmithLandandHomes.com**

Information is believed to be accurate but not guaranteed.