



MOCK RANCHES
kw
GLOBAL LAND MARKETING

5101 EAGLE RD. ANAHUAC, TX 77514
CHAMBERS COUNTY

337± ACRES | \$2,527,500



5101 EAGLE RD. ANAHUAC, TX 77514

CHAMBERS COUNTY

PROPERTY DESCRIPTION. Have you been searching for the perfect gentleman's ranch within an hour's drive from Houston? Well, this magnificent ranch is available and it could be yours! This 337-acre property has 3,580ft of frontage on FM 563/Eagle Rd as well as 4,120ft on the West Fork of Double Bayou. Take advantage of the tremendous fishing in Trinity Bay from your own private boat launch with 170' of bulkhead. A 1,440 sq ft 3 bed/2 bath home overlooks the lighted fishing pier for those late-night fishing sessions. Historically used as a rice & cattle operation, this ranch is a great investment with so much navigable water frontage that could be further developed. Take note, with an acceptable offer, two Kubota tractors, and a cab mini Kubota excavator will be conveyed. Look no further because this property ticks every box!



All information is deemed reliable, but is not warranted by MOCK RANCHES GROUP. All information is subject to change without prior notice.

MOCK RANCHES | FOR SALE

5101 EAGLE RD. ANAHUAC, TX 77514

CHAMBERS COUNTY



PROPERTY DETAILS.

- 337.05 Acres
- Chambers County
- 3bds/ 2ba
- Ranch, Acreage,
- Home with Acreage, Recreational Land, Farm, Cattle Ranch, Home, Fishing Land, Hunting Land, Commercial Acreage

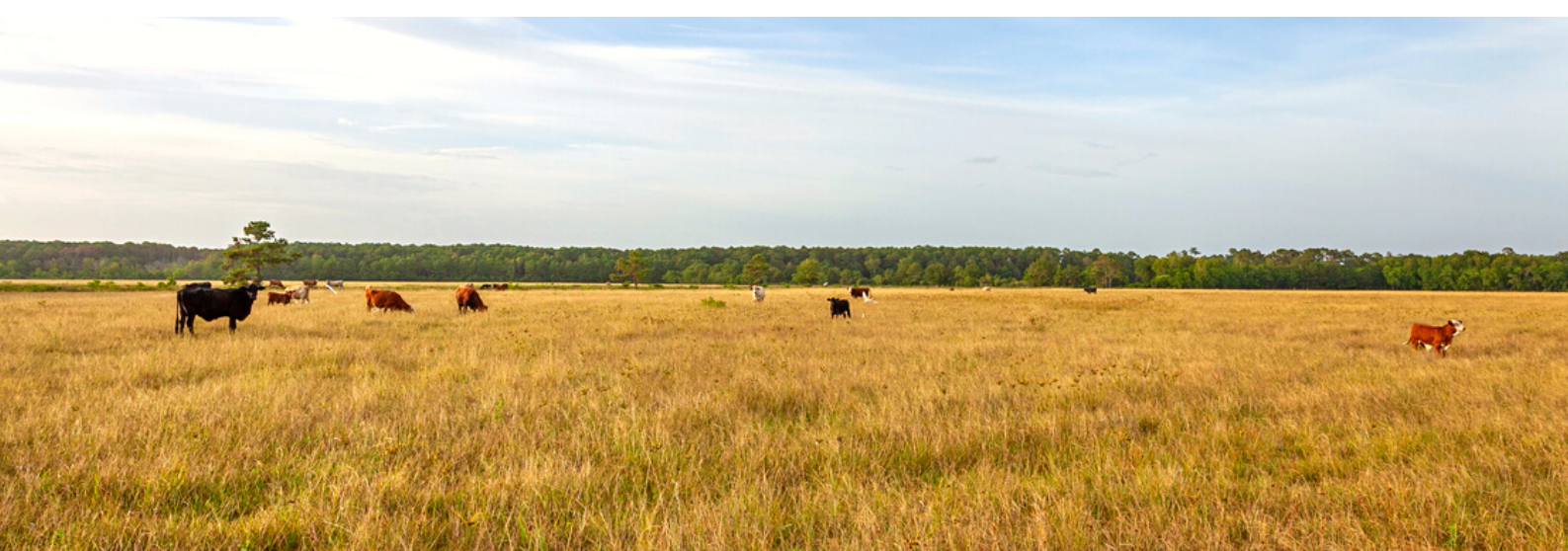
All information is deemed reliable, but is not warranted by MOCK RANCHES GROUP. All information is subject to change without prior notice.



MOCK RANCHES | FOR SALE

5101 EAGLE RD. ANAHUAC, TX 77514

CHAMBERS COUNTY



PROPERTY FEATURES:

Barn, Home, Electricity,
Water Well,
Development Potential,
Lodge, Fishing, Hunting,
Guest Ranch, Hwy-
County Rd Frontage,
Work Shop, Irrigated



All information is deemed reliable, but is not warranted by MOCK RANCHES GROUP. All information is subject to change without prior notice.

5101 EAGLE RD. ANAHUAC, TX 77514

CHAMBERS COUNTY



DRIVING DIRECTION.

From Interstate 10-Exit FM 563/Anahuac and head south for 10.7 miles. Property on left.



All information is deemed reliable, but is not warranted by MOCK RANCHES GROUP. All information is subject to change without prior notice.



CHAD ANDRUS

Land Specialist

(409) 267-7220

chadandrus@mockranches.com



SCAN FOR CONTACT CARD

All materials and information received or derived from Mock Ranches its directors, officers, agents, advisors, affiliates and/or any third party sources are provided without representation or warranty as to completeness, veracity, or accuracy, condition of the property, compliance or lack of compliance with applicable governmental requirements, developability or suitability, financial performance of the property, projected financial performance of the property for any party's intended use or any and all other matters. Neither Mock Ranches, its directors, officers, agents, advisors, or affiliates makes any representation or warranty, express or implied, as to accuracy or completeness of the materials or information provided, derived, or received. Materials and information from any source, whether written or verbal, that may be furnished for review are not a substitute for a party's active conduct of its own due diligence to determine these and other matters of significance to such party. Mock Ranches will not investigate or verify any such matters or conduct due diligence for a party unless otherwise agreed in writing. EACH PARTY SHALL CONDUCT ITS OWN INDEPENDENT INVESTIGATION AND DUE DILIGENCE.



MOCK RANCHES
kw
GLOBAL LAND MARKETING

www.mockranches.com
(281) 200-2252

Ranch. financing made simple



WINNIE OFFICE

🏠 NMLS493828 | 409.400.4066 | capitalfarmcredit.com



Anthony Vaughan

Disclaimer: Although the Broker or Agent has used reasonable care in obtaining data, this material is submitted without representation, warranty, or guarantees, and is subject to errors and omissions. Moreover, all information is subject to changes by the owner as to price or terms, to prior lease, to withdrawal of the property from the market, and to other events beyond the control of the Broker.

