

23.2 +/- Acre Home Site Lincoln County, MS



\$92,000

23.2 +/- surveyed acres in NE Lincoln County, MS is ideal for your getaway or homestead. This property features an established drive and 3+/- acre cleared homesite. Electricity through Magnolia Electric and Community Water through Lincoln Rural Water association is available along the road frontage. Massive oaks are scattered throughout the property, with the remainder growing a variety of species of natural regeneration. This property's diverse ecosystem offers the opportunity to hunt and enjoy the wildlife that call it home. The property is just minutes from Lake Lincoln State Park, and its 550 acre lake. It's located approximately 20 minutes North of Brookhaven, MS, and just over two hours from New Orleans and Baton Rouge, LA. Call Blake Sasser for a tour today!

Directions from intersection of Mt Zion Road and Hwy 51: Head North on 51 for 318 feet to turn right onto Stonewall Street. Continue for 377 feet then turn left onto Main Street. Continue for 453 feet then turn left onto East Railroad Avenue. Drive for 0.5 miles then turn right onto 4th Street. In 0.7 miles turn left onto Little Rock Road Northeast, drive for 312 feet. Little Rock Road Northeast becomes Little Rock Church Road Northeast. Continue for 2.2 miles. Continue onto Beard Rd NE for 2.9 miles. Turn left onto Bahalia Road Northeast. In 0.1 miles the destination is on the left.

[Google Map Link](#)

Call me today!

BLAKE SASSER, REALTOR*
Blake@TomSmithLand.com
601.990.5070 office | 601.757.5027 cell



TomSmithLandandHomes.com



Call me today!

BLAKE SASSER, REALTOR®
Blake@TomSmithLand.com
601.990.5070 **office** | 601.757.5027 **cell**



TomSmithLandandHomes.com

Information is believed to be accurate but not guaranteed.

Aerial Map



Click [here](#) for an interactive map.

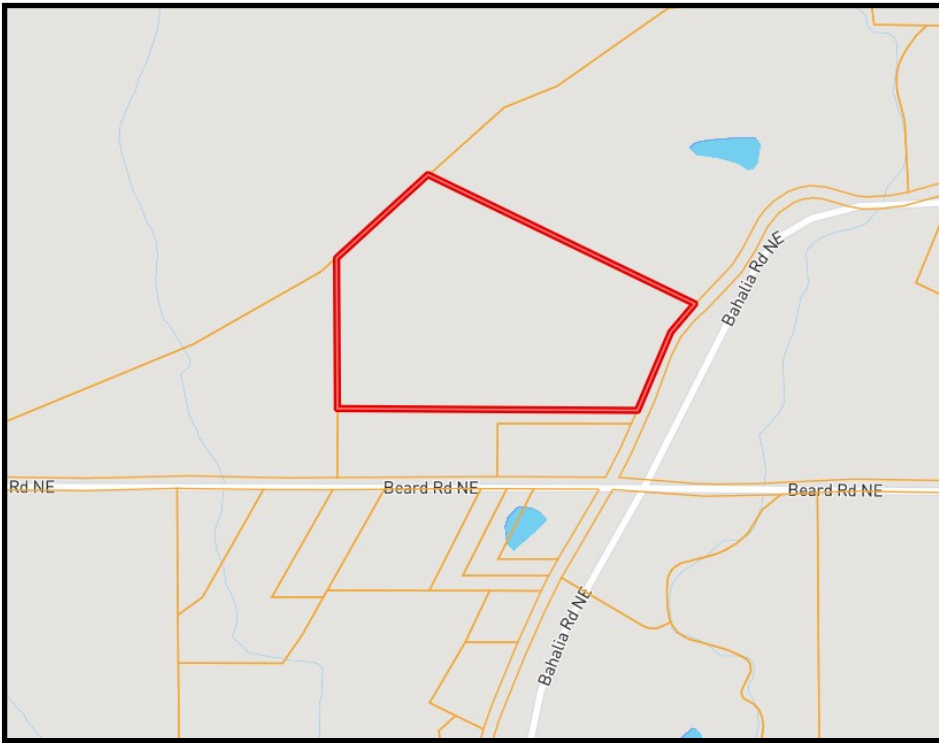
Call me today!

BLAKE SASSER, REALTOR®
Blake@TomSmithLand.com
601.990.5070 **office** | 601.757.5027 **cell**



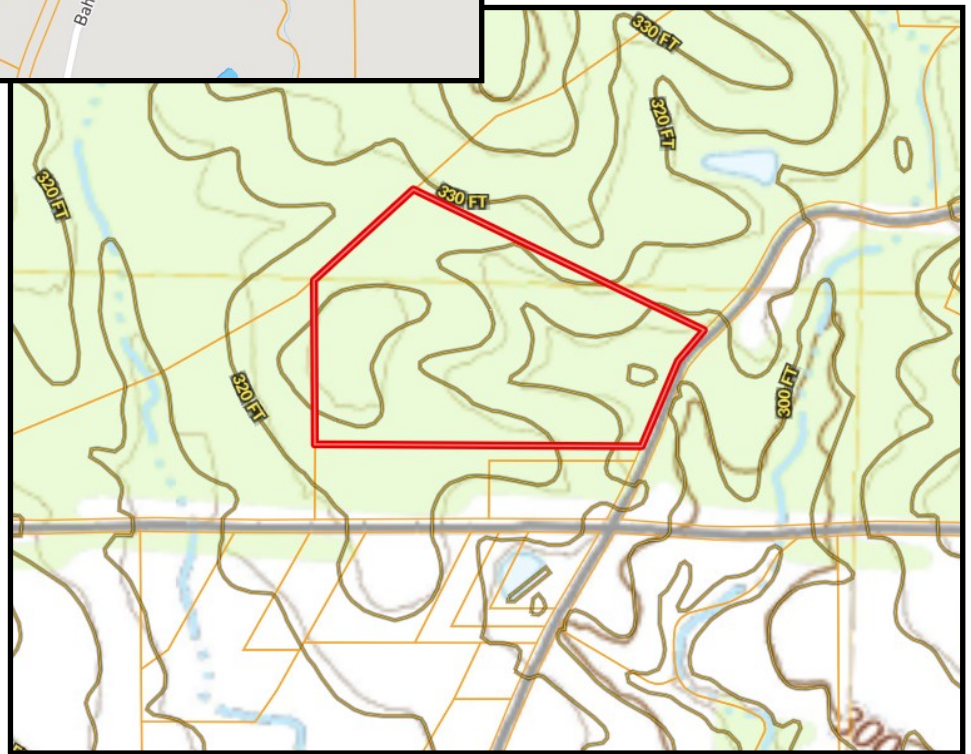
TomSmithLandandHomes.com

Information is believed to be accurate but not guaranteed.



Ownership
Map

Topo
Map



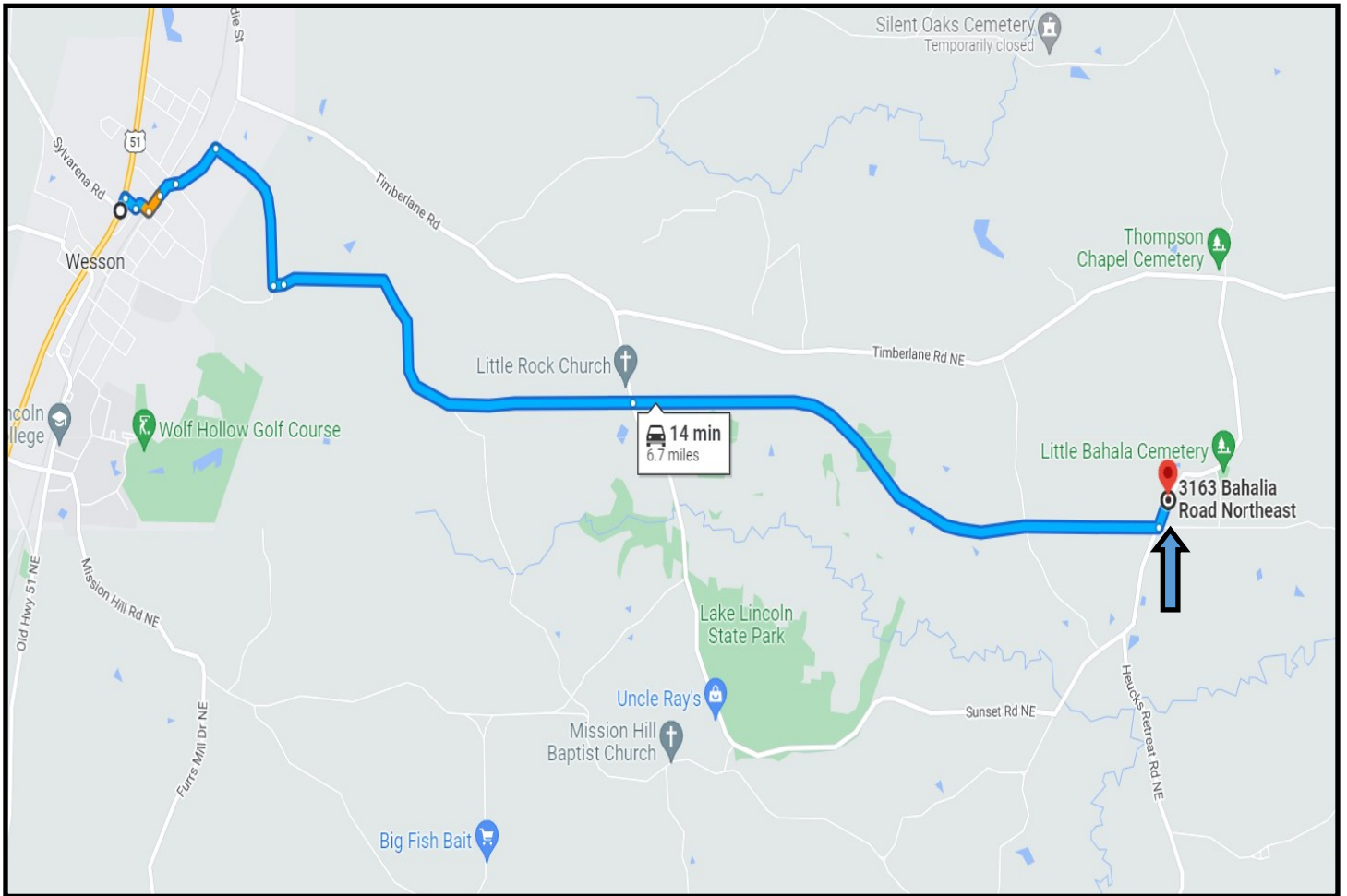
BLAKE SASSER, REALTOR®
Blake@TomSmithLand.com
601.990.5070 office | 601-757-5027 cell
Licensed in MS and LA



TomSmithLandandHomes.com

Information is believed to be accurate but not guaranteed.

Directional Map



Directions from intersection of Mt Zion Road and Hwy 51: Head North on 51 for 318 feet to turn right onto Stonewall Street. Continue for 377 feet then turn left onto Main Street. Continue for 453 feet then turn left onto East Railroad Avenue. Drive for 0.5 miles then turn right onto 4th Street. In 0.7 miles turn left onto Little Rock Road Northeast, drive for 312 feet. Little Rock Road Northeast becomes Little Rock Church Road Northeast. Continue for 2.2 miles. Continue onto Beard Rd NE for 2.9 miles. Turn left onto Bahalia Road Northeast. In 0.1 miles the destination is on the left.

[Google Map Link](#)

Call me today!

BLAKE SASSER, REALTOR®
Blake@TomSmithLand.com
601.990.5070 office | 601.757.5027 cell



TomSmithLandandHomes.com

Information is believed to be accurate but not guaranteed.