

Move-in-ready Home Lincoln County, MS



\$149,900

645 Zetus Rd Brookhaven, MS 39601

If you have been searching for a move in ready home in Lincoln County, MS, look no further than this three bedroom, two bath home, with an optional fourth bedroom. This charming 1,320 +/- square foot home on 0.35+/- acres has been immaculately maintained and has had a comprehensive remodel. As you drive up to this home, you'll fall in love with the large yard and park like trees. As you enter the home, the first thing that will catch your eye is a spacious living room that is open to the kitchen. The kitchen features bar top seating, ample cabinet space, and stainless steel appliances. Just off the living room are two bedrooms with a full bath in the center. At the center of the home, is an optional fourth bedroom currently used as a home office. At the rear of the home lies the primary bedroom with its own full bath and a walk in closet. Behind the home, is a fenced in section for your pets to safely enjoy the outdoors. Two sheds and an oversized carport sit behind the home, offering parking for two with ample overflow space for storage. The property is located on Zetus Road just off Natchez Drive, offering convenience to all that Brookhaven has to offer.

Directions from I55: Take exit 40, head Northeast toward Brookway Blvd. Merge onto Brookway Boulevard. In 0.1 miles turn right into Magee Drive. Continue for 0.2 miles then turn right onto Halbert Heights Road. Drive for 404 feet then turn left onto Virginia Avenue Northeast. Continue for 0.6 miles then turn left onto Zetus Road Northeast. The destination will be on the right.

[Google Map Link](#)

Call me today!

BLAKE SASSER, REALTOR®
Blake@TomSmithLand.com
601.990.5070 office | 601.757.5027 cell



TomSmithLandandHomes.com



Call me today!

BLAKE SASSER, REALTOR®
Blake@TomSmithLand.com
601.990.5070 office | 601.757.5027 cell



TomSmithLandandHomes.com

Information is believed to be accurate but not guaranteed.



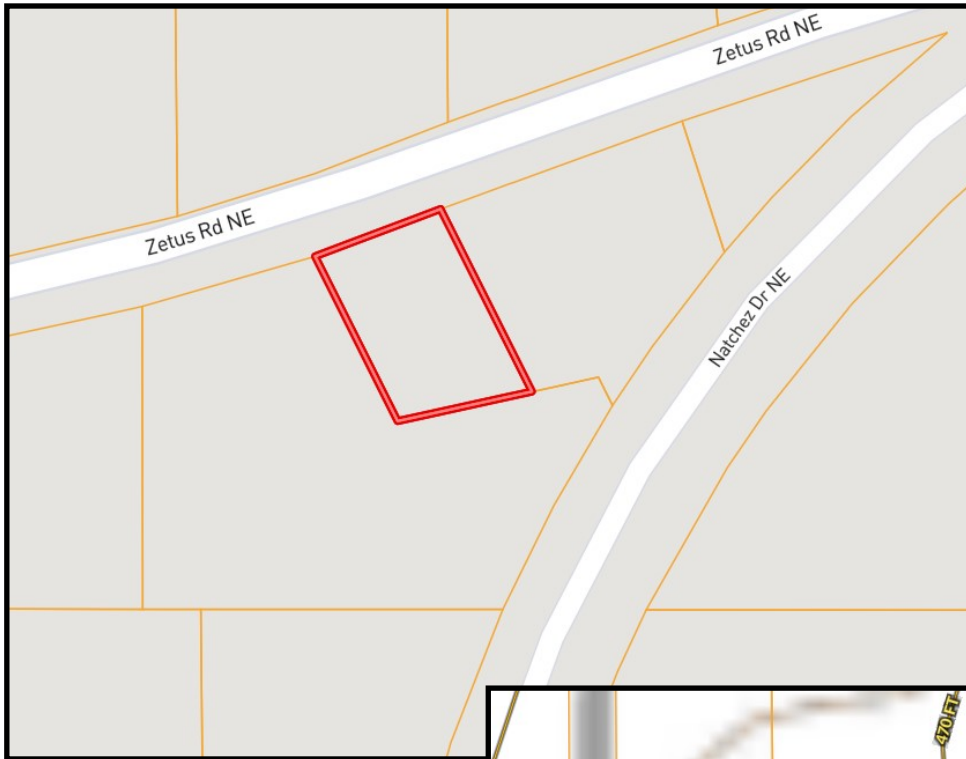
Call me today!

BLAKE SASSER, REALTOR®
Blake@TomSmithLand.com
601.990.5070 office | 601.757.5027 cell



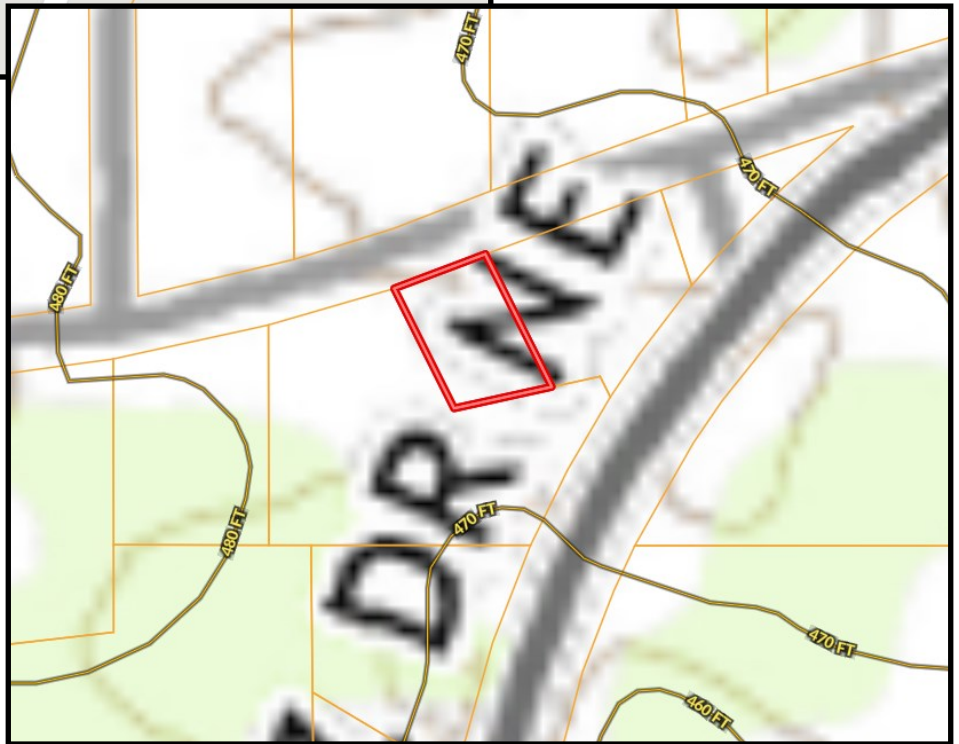
TomSmithLandandHomes.com

Information is believed to be accurate but not guaranteed.



Ownership
Map

Topo
Map



Call me today!

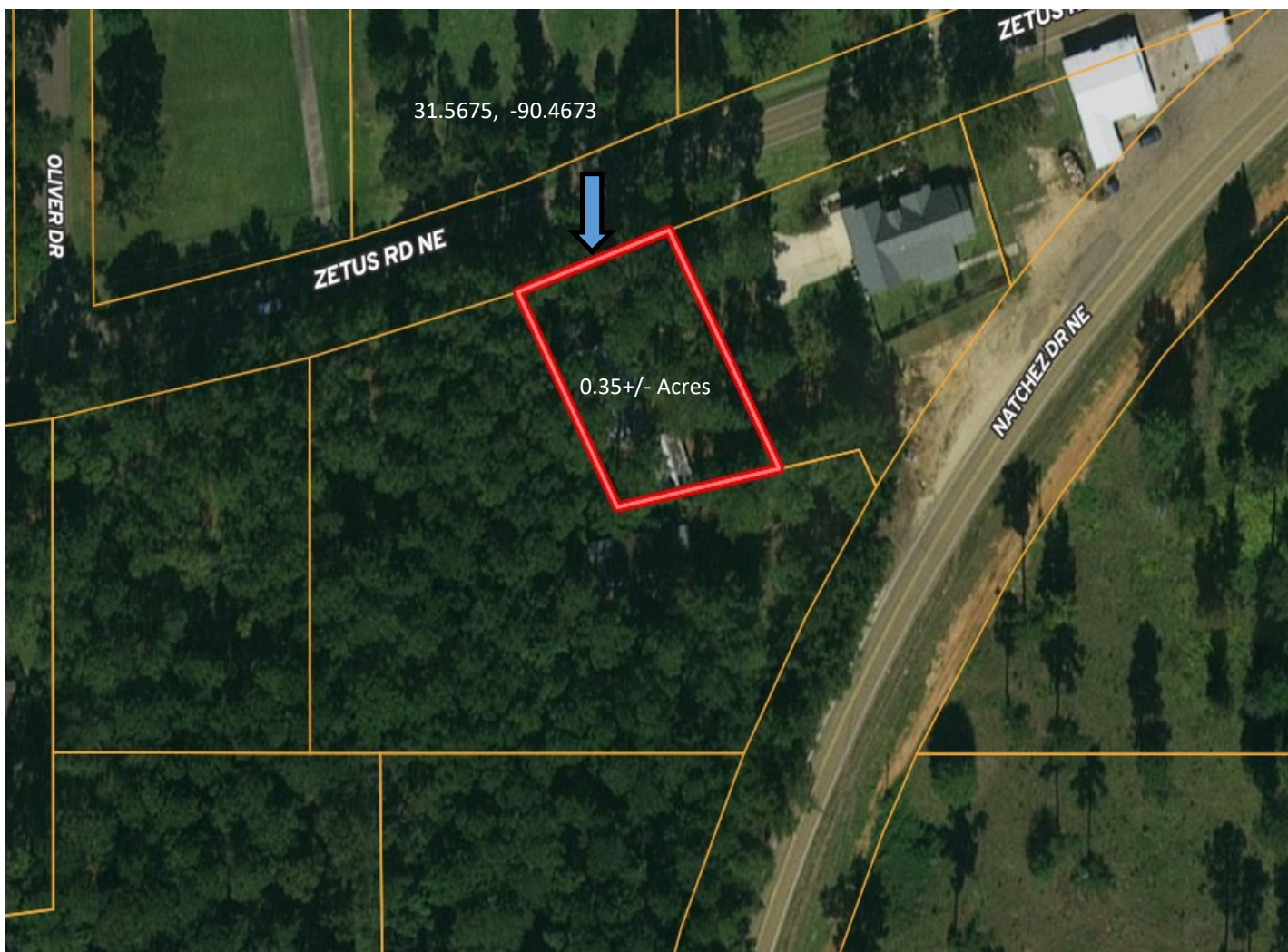
BLAKE SASSER, REALTOR®
Blake@TomSmithLand.com
601.990.5070 office | 601.757.5027 cell



TomSmithLandandHomes.com

Information is believed to be accurate but not guaranteed.

Aerial Map



Click [here](#) for an interactive map.

Call me today!

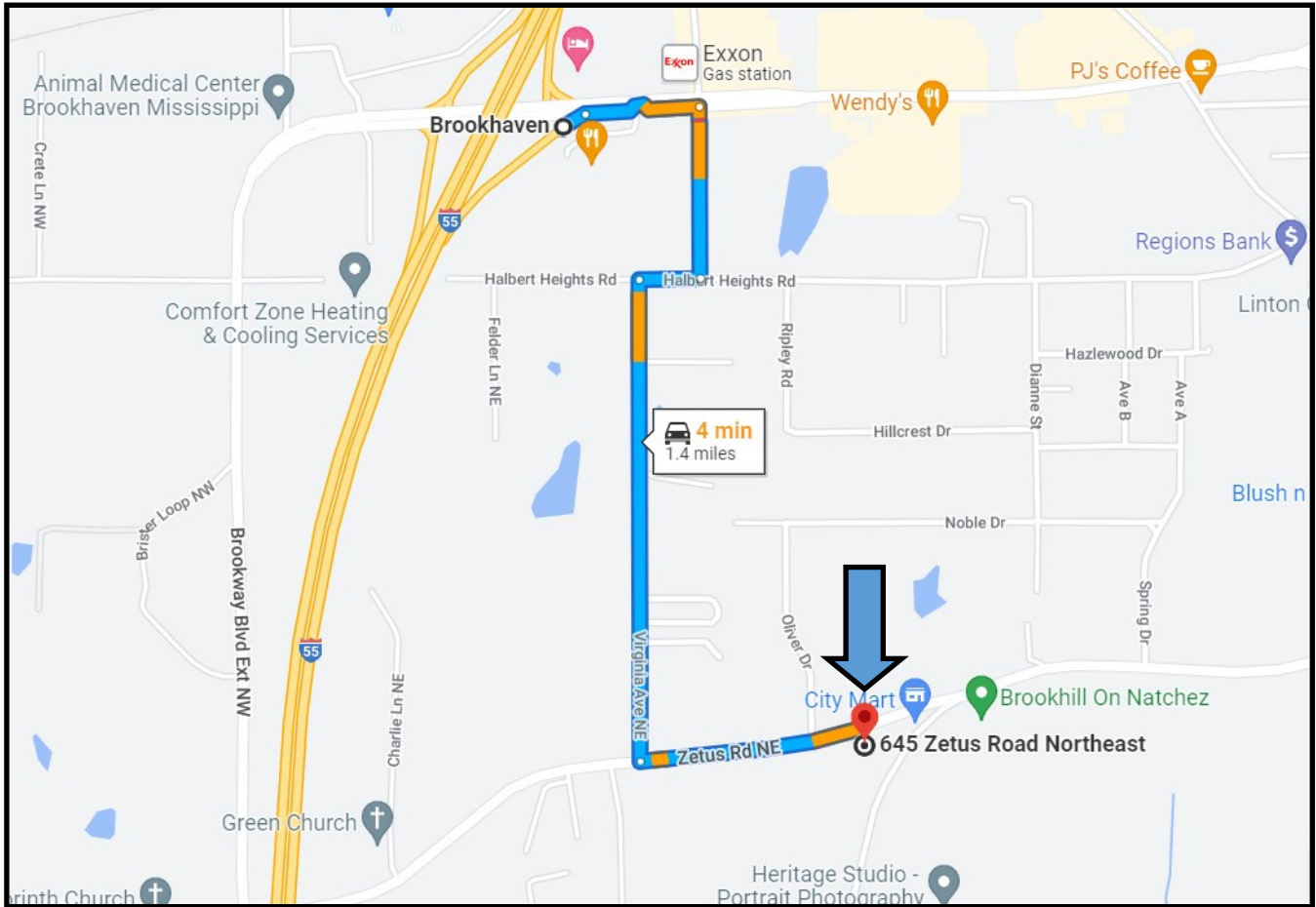
BLAKE SASSER, REALTOR®
Blake@TomSmithLand.com
601.990.5070 **office** | 601.757.5027 **cell**



TomSmithLandandHomes.com

Information is believed to be accurate but not guaranteed.

Directional Map



Directions from I55 : Take exit 40, head Northeast toward Brookway Blvd. Merge onto Brookway Boulevard. In 0.1 miles turn right into Magee Drive. Continue for 0.2 miles then turn right onto Halbert Heights Road. Drive for 404 feet then turn left onto Virginia Avenue Northeast. Continue for 0.6 miles then turn left onto Zetus Road Northeast. The destination will be on the right.

[Google Map Link](#)

Call me today!

BLAKE SASSER, REALTOR®
Blake@TomSmithLand.com
601.990.5070 office | 601.757.5027 cell



TomSmithLandandHomes.com

Information is believed to be accurate but not guaranteed.