

2.2± Acre Camp on Yazoo River, in Yazoo County, MS



Beautiful camp exceptionally maintained sitting on the Yazoo River. This camp is perfect for fishermen or hunters with the Panther Swamp National Wildlife Refuge just a few minutes away. This camp offers enough room to sleep 16 people comfortably, and everyone still has plenty of space. The property features a loft with ten beds, one bedroom with two bunk beds, a large main bedroom with a bathroom, an additional bathroom in the hall beside the bunk room, and a full laundry room. There is a 12ftX30ft front porch and a 10ftX30ft back porch. The camp is approximately 2,100 square feet heated and cooled, with a 30ftX72ft covered concrete storage underneath the camp house. There is also approximately 12ftX12ft of locked storage on the concrete slab underneath. There is two car-covered parking approximately 30ftX30ft. A 20ftX30ft skinning shed, a cleaning table for fish, and well water is on site. Don't miss out on owning a camp of your own in Yazoo County, MS., along with the wonderful camp.

Three spaces are rented out yearly to other hunters for approximately \$6,000.

Call Travis Smith today to schedule your private viewing!

[5536 River Rd, Yazoo City, MS 39194](#)



Call me today!

TRAVIS SMITH, REALTOR®
Travis@TomSmithLand.com
601.898.2772 **office** | 601.600.0428 **cell**



TomSmithLandandHomes.com

Information is believed to be accurate but not guaranteed.



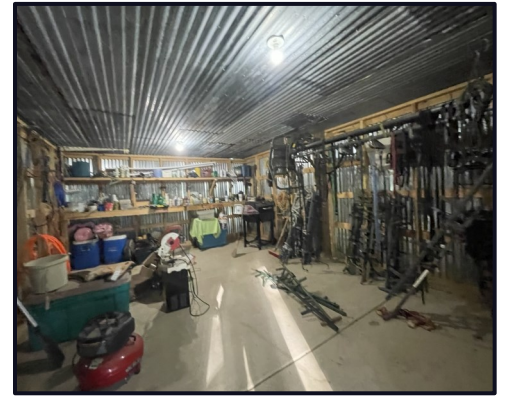
Call me today!

TRAVIS SMITH, REALTOR®
 Travis@TomSmithLand.com
 601.898.2772 **office** | 601.600.0428 **cell**



TomSmithLandandHomes.com

Information is believed to be accurate but not guaranteed.



Call me today!

TRAVIS SMITH, REALTOR®
 Travis@TomSmithLand.com
 601.898.2772 **office** | 601.600.0428 **cell**



TomSmithLandandHomes.com

Information is believed to be accurate but not guaranteed.



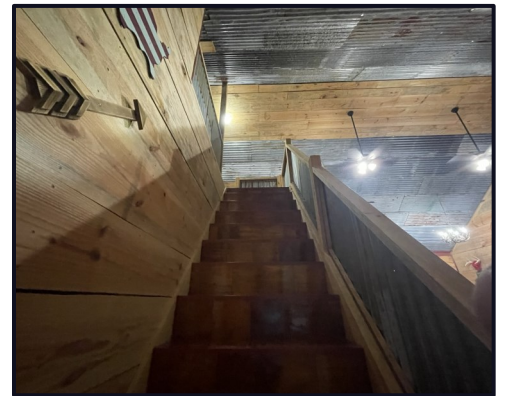
Call me today!

TRAVIS SMITH, REALTOR®
 Travis@TomSmithLand.com
 601.898.2772 **office** | 601.600.0428 **cell**



TomSmithLandandHomes.com

Information is believed to be accurate but not guaranteed.



*Call me
today!*

TRAVIS SMITH, REALTOR®
 Travis@TomSmithLand.com
 601.898.2772 **office** | 601.600.0428 **cell**



TomSmithLandandHomes.com

Information is believed to be accurate but not guaranteed.



Call me today!

TRAVIS SMITH, REALTOR®
 Travis@TomSmithLand.com
 601.898.2772 **office** | 601.600.0428 **cell**



TomSmithLandandHomes.com

Information is believed to be accurate but not guaranteed.



[CLICK HERE FOR AN INTERACTIVE MAP](#)

*Call me
today!*

TRAVIS SMITH, REALTOR®
Travis@TomSmithLand.com
601.898.2772 **office** | 601.600.0428 **cell**

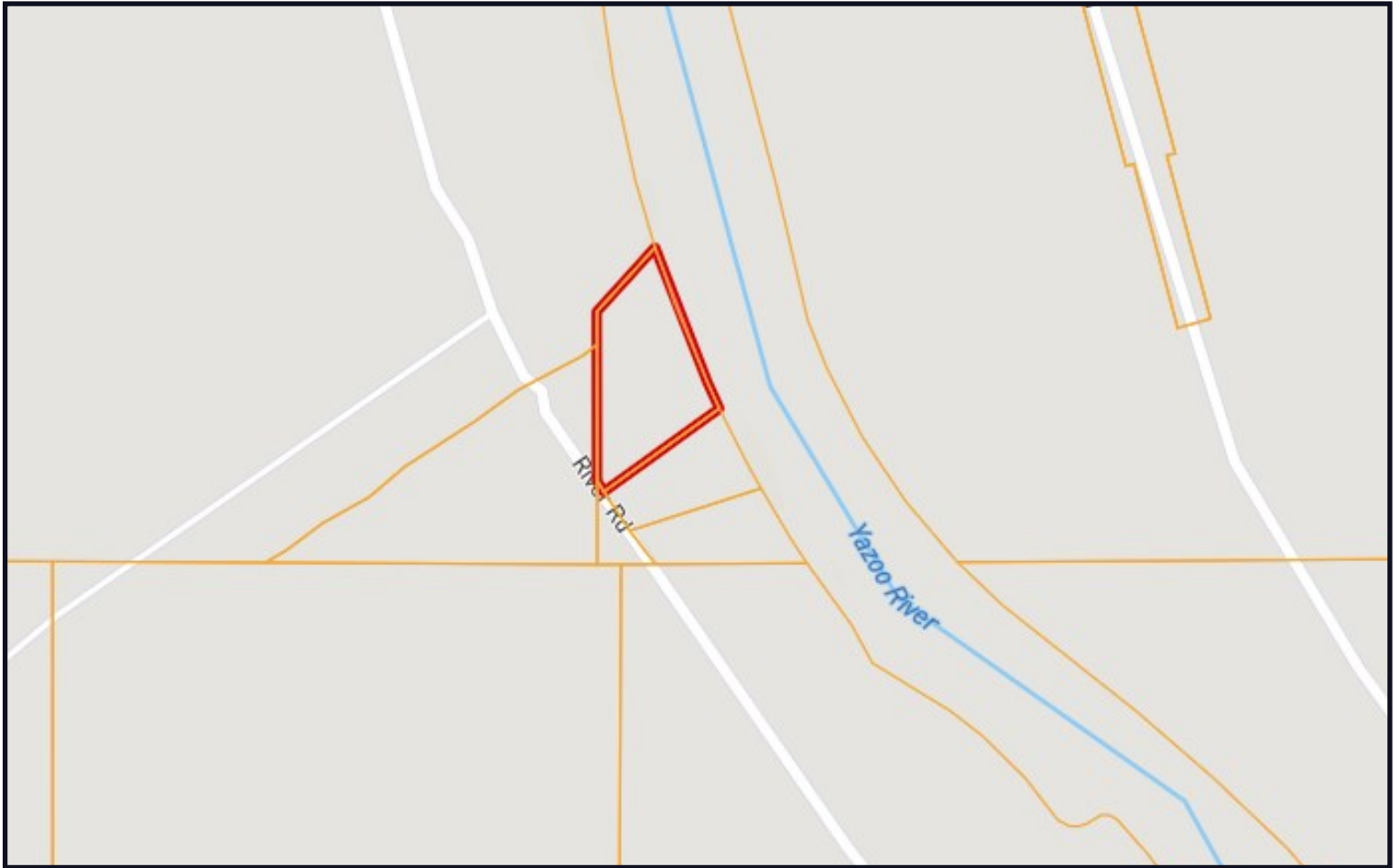


Expect More. Get More.

TomSmithLandandHomes.com

Information is believed to be accurate but not guaranteed.

OWNERSHIP MAP



*Call me
today!*

TRAVIS SMITH, REALTOR®
Travis@TomSmithLand.com
601.898.2772 **office** | 601.600.0428 **cell**

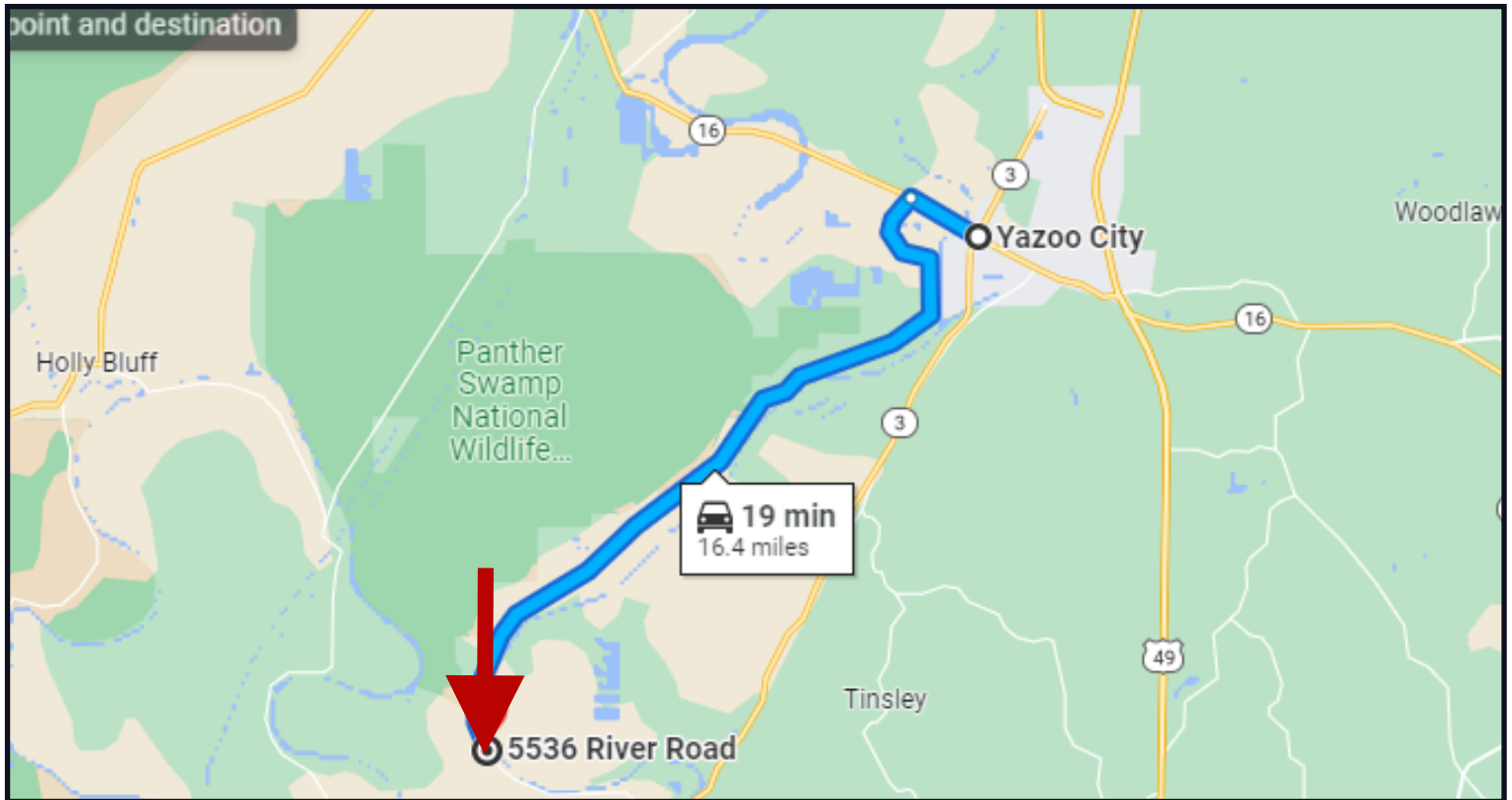


Expect More. Get More.

TomSmithLandandHomes.com

Information is believed to be accurate but not guaranteed.

DIRECTIONAL MAP



Directions from Intersection of Hwy 3 and Hwy 16 in Yazoo City, MS:
Head northwest on MS-149 S/MS-16 E for 1.4 miles, then Turn left onto River Rd and destination will be on the left in 15 miles.

[5536 River Rd, Yazoo City, MS 39194](#)



Call me today!

TRAVIS SMITH, REALTOR®
Travis@TomSmithLand.com
601.898.2772 **office** | 601.600.0428 **cell**



TomSmithLandandHomes.com

Information is believed to be accurate but not guaranteed.