



**\$215,000**

## 800 Avery Street Cleveland, MS

Look at this lovely, must see three bedroom, two bathroom home in Bolivar County, MS! This 1,843 SF home was recently remodeled and features generous-sized bedrooms, a large living area, and a spacious separate laundry room. The house is located on a .26± acre, shaded corner lot near Delta State University and all that Cleveland has to offer. Call Anthony to schedule your private showing today!

Directions from the Intersection of Hwy 8 and Hwy 278 in Cleveland, MS: Travel Hwy 8/W Sunflower Rd. for 1 miles. Turn left onto N Fifth Avenue and travel .8 miles. Turn left onto Avery Street, after .1 mile the home will be on your left. [GOOGLE MAP LINK](#)



*Call me today!*

**ANTHONY STEEN, REALTOR®**  
Anthony@TomSmithLand.com  
662.441.2500 office | 662.645.5151 cell



**TomSmithLandandHomes.com**

Information is believed to be accurate but not guaranteed.



*Call me today!*

**ANTHONY STEEN**, REALTOR®  
Anthony@TomSmithLand.com  
662.441.2500 office | 662.645.5151 cell



Expect More. Get More.



**TomSmithLandandHomes.com**

Information is believed to be accurate but not guaranteed.



*Call me today!*

**ANTHONY STEEN**, REALTOR®  
Anthony@TomSmithLand.com  
662.441.2500 office | 662.645.5151 cell

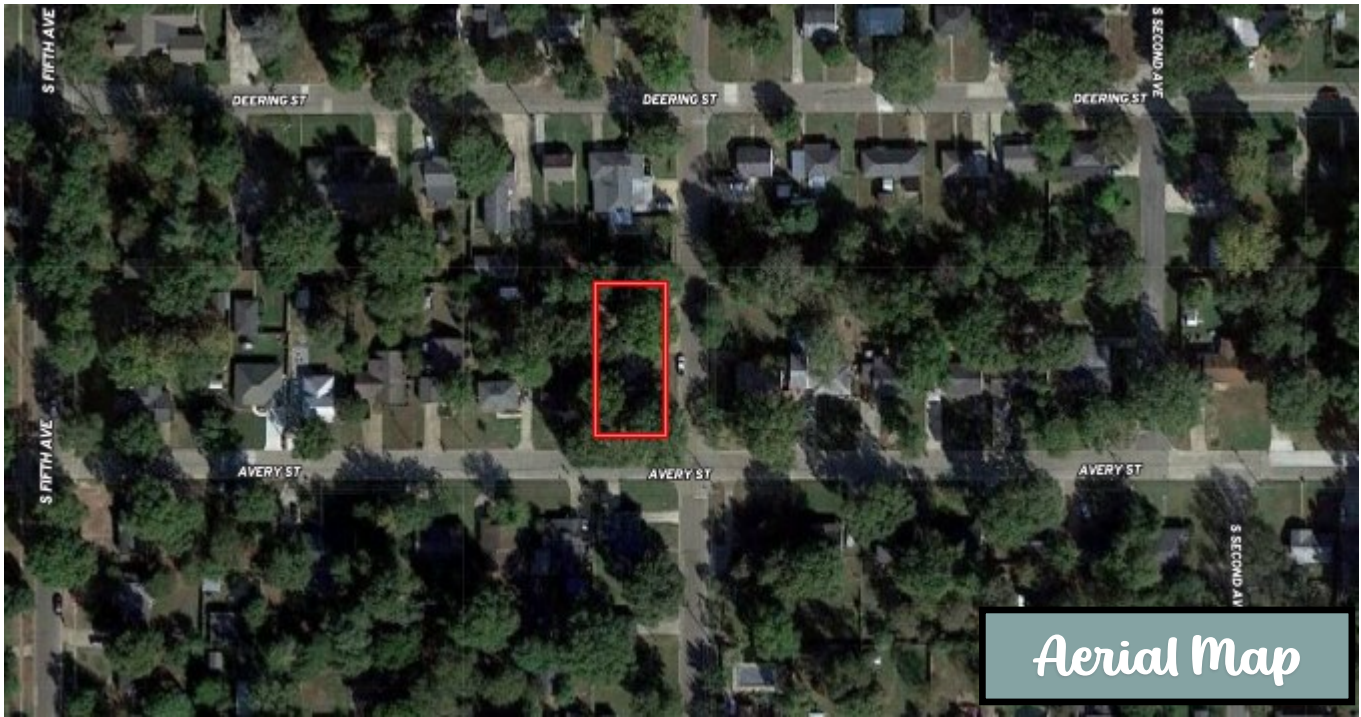


Expect More. Get More.

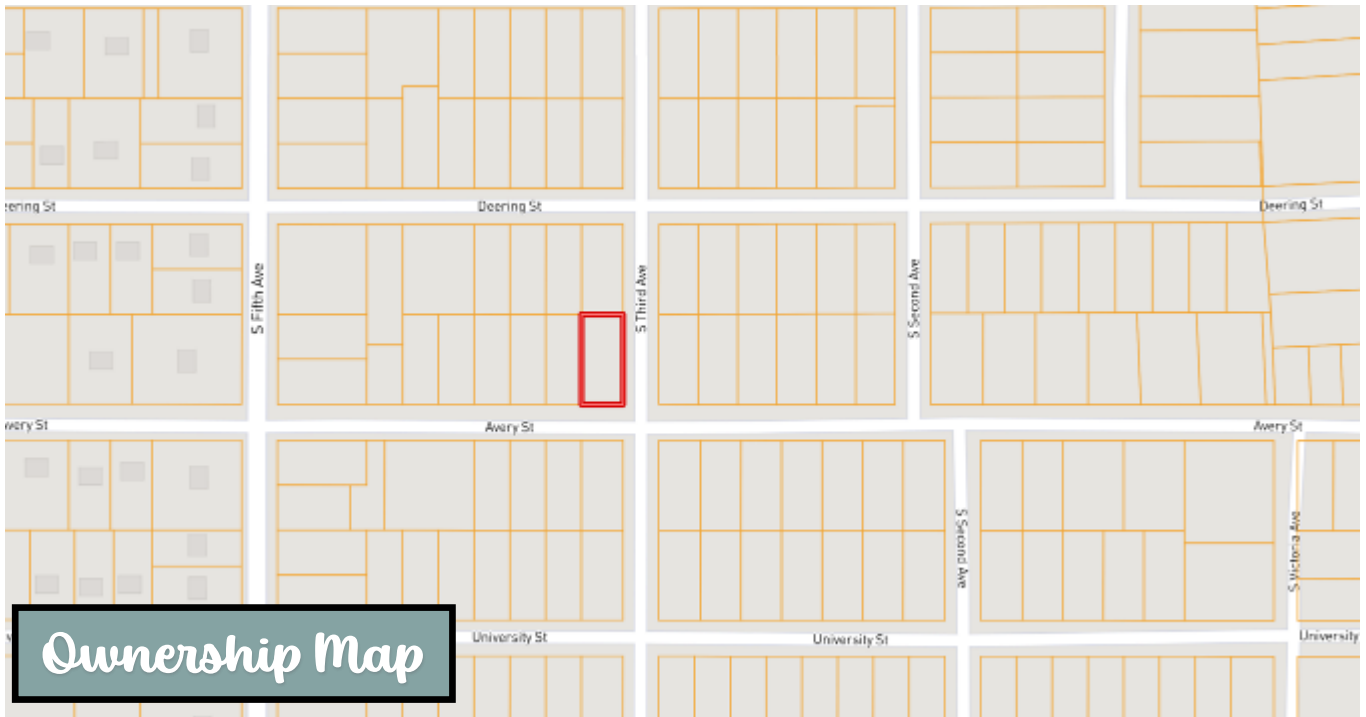


**TomSmithLandandHomes.com**

Information is believed to be accurate but not guaranteed.



Aerial Map



Ownership Map

[Click Here for an Interactive Map](#)

*Call me today!*

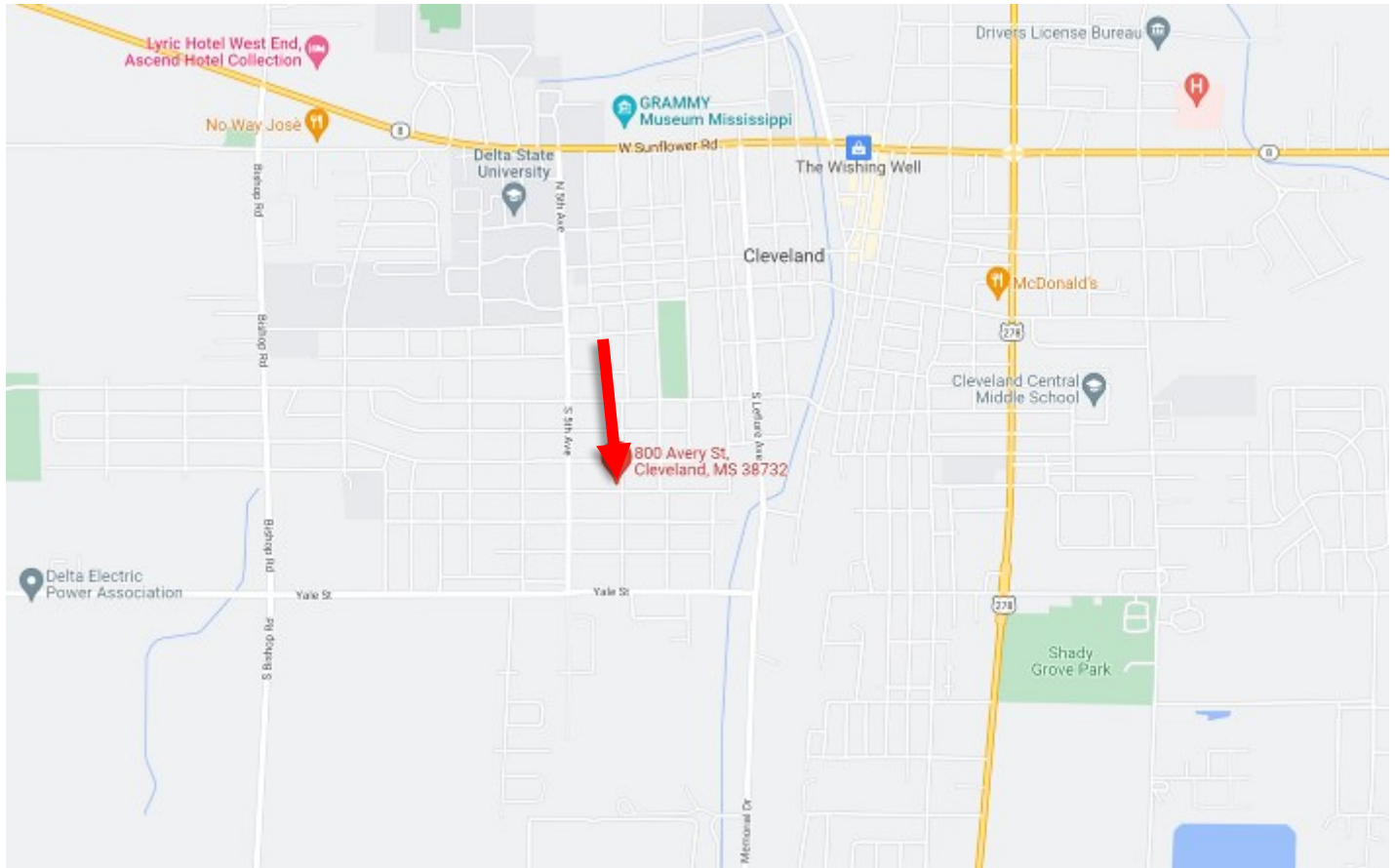
**ANTHONY STEEN**, REALTOR®  
 Anthony@TomSmithLand.com  
 662.441.2500 office | 662.645.5151 cell



**TomSmithLandandHomes.com**

Information is believed to be accurate but not guaranteed.

# Directional Map



Directions from the Intersection of Hwy 8 and Hwy 278 in Cleveland, MS:

Travel Hwy 8/W Sunflower Rd. for 1 miles. Turn left onto N Fifth Avenue and travel .8 miles. Turn left onto Avery Street, after .1 mile the home will be on your left. [GOOGLE MAP LINK](#)

800 Avery Street Cleveland, MS 38732



*Call me today!*

**ANTHONY STEEN, REALTOR®**  
Anthony@TomSmithLand.com  
662.441.2500 office | 662.645.5151 cell



**TomSmithLandandHomes.com**

Information is believed to be accurate but not guaranteed.