



**MOCK RANCHES**  
kw  
GLOBAL LAND MARKETING

**500 ACR 2106, PALESTINE, TX 75801**  
ANDERSON COUNTY

22± ACRES | ~~\$749,500~~ **NOW:\$729,500**





# 500 ACR 2106, PALESTINE, TX 75801

## ANDERSON COUNTY

**PROPERTY DESCRIPTION.** Here is the discerning buyer's opportunity to own a turnkey gentleman's ranch between Houston & Dallas. This hilltop home sits on over twenty acres with french doors leading into great rooms with high ceilings that will undoubtedly meet your requirements. Imagine sitting outside overlooking the pond with a cup of coffee and gazing out at the property's majestic oak trees or sipping a mojito with your family and friends while grilling some barbeque around your private pool. This property has been well maintained and cared for as you will notice as soon as you drive through the private gate. Plenty of room for entertaining family and friends and a guest house to lodge them in. Being at the end of a county road, this spectacular property provides the privacy that we all desire! It is far enough away from the hustle and bustle which allows you to unwind without being disturbed by the outside world. Come experience the peace and tranquility of country living.



All information is deemed reliable, but is not warranted by MOCK RANCHES GROUP. All information is subject to change without prior notice.



# 500 ACR 2106, PALESTINE, TX 75801

ANDERSON COUNTY



## PROPERTY DETAILS:

- 22.436 Acres
- Anderson County
- 2380 sq ft 4 bd/3ba
- Acreage, Equestrian Property, Hunting Land, Recreational Land, Farm, Home, Ranch, Cattle Ranch, Home with Acreage



All information is deemed reliable, but is not warranted by MOCK RANCHES GROUP. All information is subject to change without prior notice.



MOCK RANCHES | FOR SALE

# 500 ACR 2106, PALESTINE, TX 75801

ANDERSON COUNTY



## PROPERTY FEATURES:

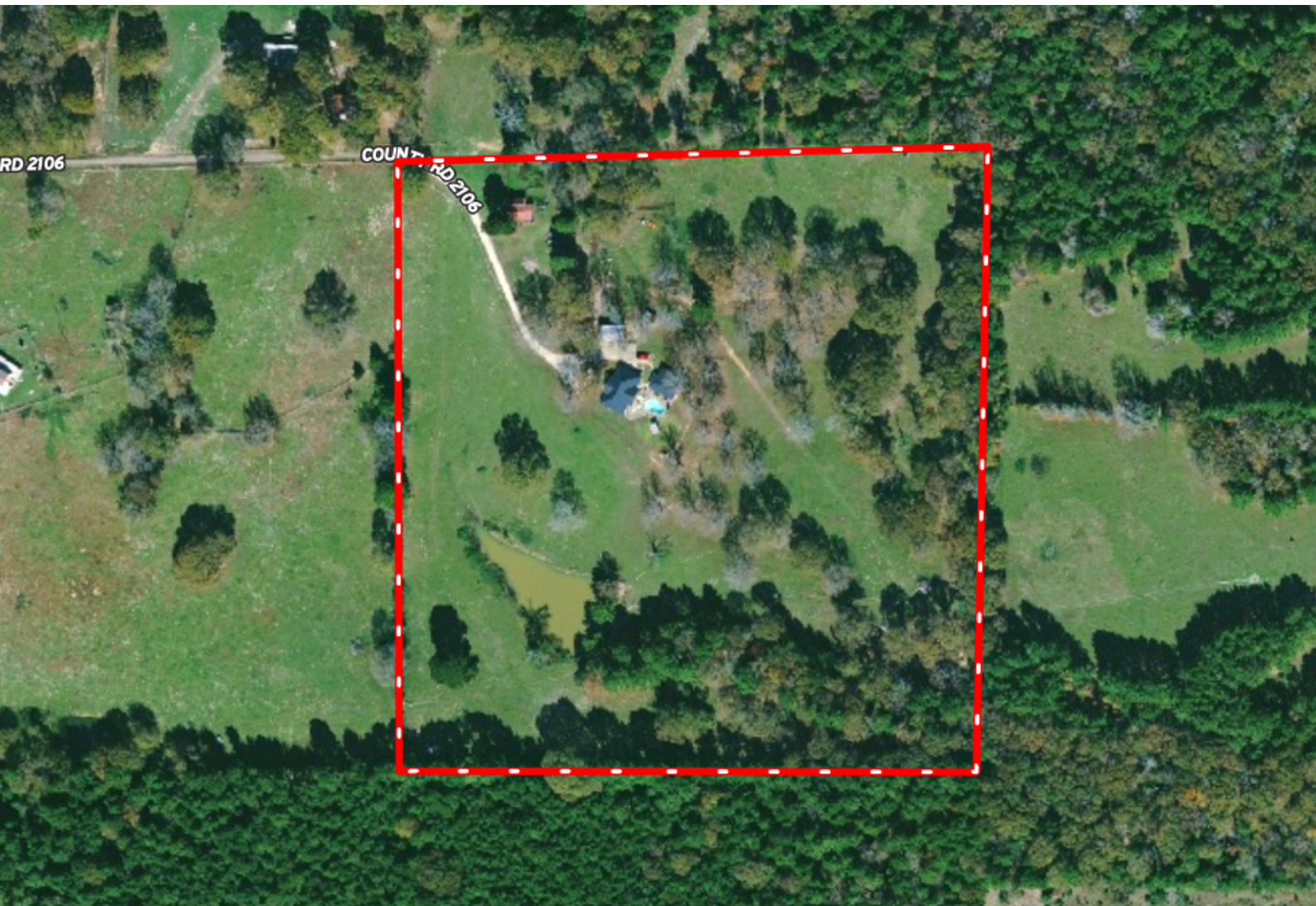
Home, Corrals, Barn,  
Electricity, Pond, Hunting,  
Work Shop, Rural Water,  
Fishing, Game-Proof  
Fence

All information is deemed reliable, but is not warranted by MOCK RANCHES GROUP. All information is subject to change without prior notice.



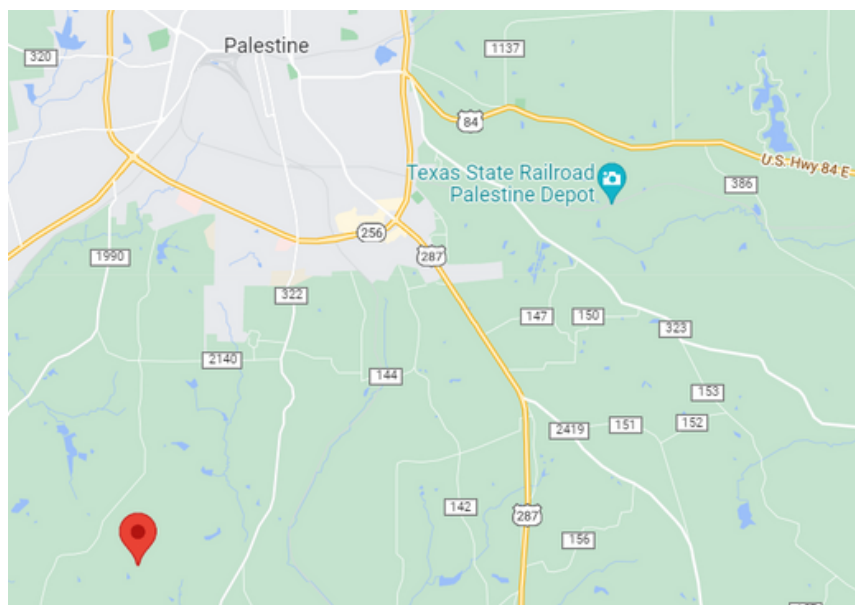
# 500 ACR 2106, PALESTINE, TX 75801

ANDERSON COUNTY



## DRIVING DIRECTION.

From I-45 in Fairfield-travel Hwy 84 east for 22.7 miles. Stay to the right and continue on TX-294 for 5.7 miles. Turn left on CR 2101 and travel 3.1 miles. Turn right on CR 2105 and continue to the very end of the road. House on right. CR 2105 turns into CR 2106.



All information is deemed reliable, but is not warranted by MOCK RANCHES GROUP. All information is subject to change without prior notice.





# CHAD ANDRUS

## Land Specialist

(409) 267-7220

[chadandrus@mockranches.com](mailto:chadandrus@mockranches.com)



SCAN FOR CONTACT CARD

All materials and information received or derived from Mock Ranches its directors, officers, agents, advisors, affiliates and/or any third party sources are provided without representation or warranty as to completeness, veracity, or accuracy, condition of the property, compliance or lack of compliance with applicable governmental requirements, developability or suitability, financial performance of the property, projected financial performance of the property for any party's intended use or any and all other matters. Neither Mock Ranches, its directors, officers, agents, advisors, or affiliates makes any representation or warranty, express or implied, as to accuracy or completeness of the materials or information provided, derived, or received. Materials and information from any source, whether written or verbal, that may be furnished for review are not a substitute for a party's active conduct of its own due diligence to determine these and other matters of significance to such party. Mock Ranches will not investigate or verify any such matters or conduct due diligence for a party unless otherwise agreed in writing. EACH PARTY SHALL CONDUCT ITS OWN INDEPENDENT INVESTIGATION AND DUE DILIGENCE.



**MOCK RANCHES**  
kw  
GLOBAL LAND MARKETING

[www.mockranches.com](http://www.mockranches.com)  
(281) 200-2252

# Ranch. financing made simple



**WINNIE OFFICE**

🏠 NMLS493828 | 409.400.4066 | [capitalfarmcredit.com](http://capitalfarmcredit.com)



**Anthony Vaughan**

Disclaimer: Although the Broker or Agent has used reasonable care in obtaining data, this material is submitted without representation, warranty, or guarantees, and is subject to errors and omissions. Moreover, all information is subject to changes by the owner as to price or terms, to prior lease, to withdrawal of the property from the market, and to other events beyond the control of the Broker.

