

Country Living at it's Best Bolivar County, MS



\$194,550

Address: 113 Prewitt Road Shaw, MS 38773

This 2,394 sq. ft. Bolivar County country home has four bedrooms and two and a half baths. When you open the front door, you will find a cozy den. It has a spacious kitchen, a large storage room where the laundry is located and a large pantry. There are two bedrooms, one and a half baths on the lower level and two bedrooms and one bath upstairs. The home is about three miles from Shaw, with hard surfaced country road access. This all wood home has a metal roof and a new septic system. There is a storage building and a 20x20 shop in the back. The lot is approximately 100x200 or .48+/- acres with a shared driveway. Call Charlie today at (O) 662.441.2500 or (C) 662.719.7218.

Directions from the intersection of HWY 82 and HWY 1 in Greenville, MS: Travel East on Hwy 82 for 9.6 miles. Merge onto Hwy 61 towards Cleveland and travel 15.9 miles then turn right onto Hwy 448. Continue on for 4.69 miles and turn left onto King Dr. for 0.7 miles and continue onto Prewitt Rd for 0.6 miles and destination is on the left. [Click for Google Maps.](#)

Directions from the intersection of Hwy 61 and Hwy 8 Cleveland, MS: Travel South on Hwy 61 for 5.1 miles, turn left onto Jones Bayou Rd. Travel 1.7 miles, turn right onto Interstate Rd. and travel 2.3 miles until Sandpit Rd. Turn left and in 0.8 miles turn right onto Prewitt Rd. and the destination is on the right in 0.4 miles. [Click for Google Maps.](#)



Call me today!

CHARLIE HEINSZ, REALTOR®
Charlie@TomSmithLand.com
662.441.2500 office | 662.719.7218 cell



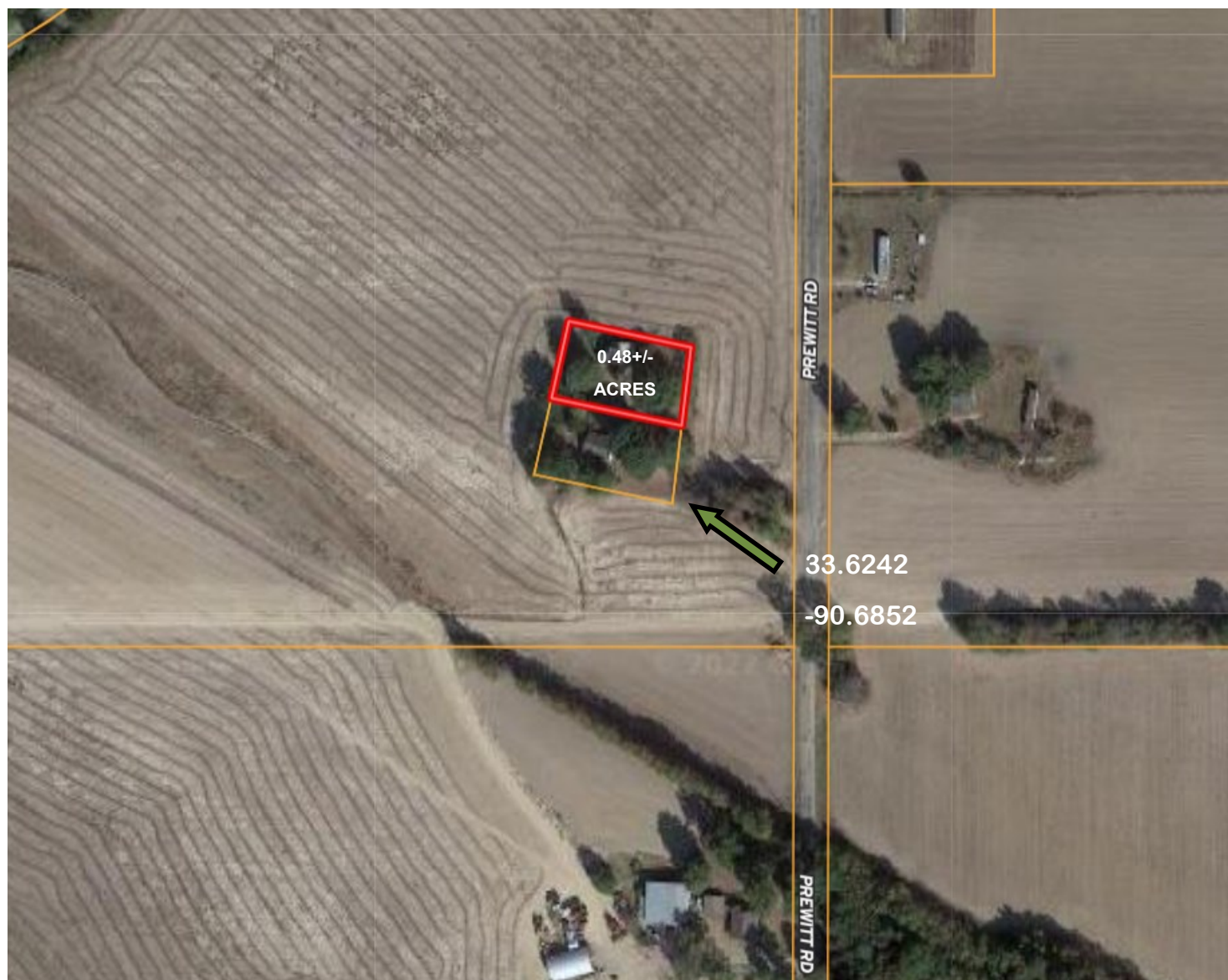
TomSmithLandandHomes.com

Information is believed to be accurate but not guaranteed.





AERIAL MAP



[Click for Interactive Map](#)

Call me today!

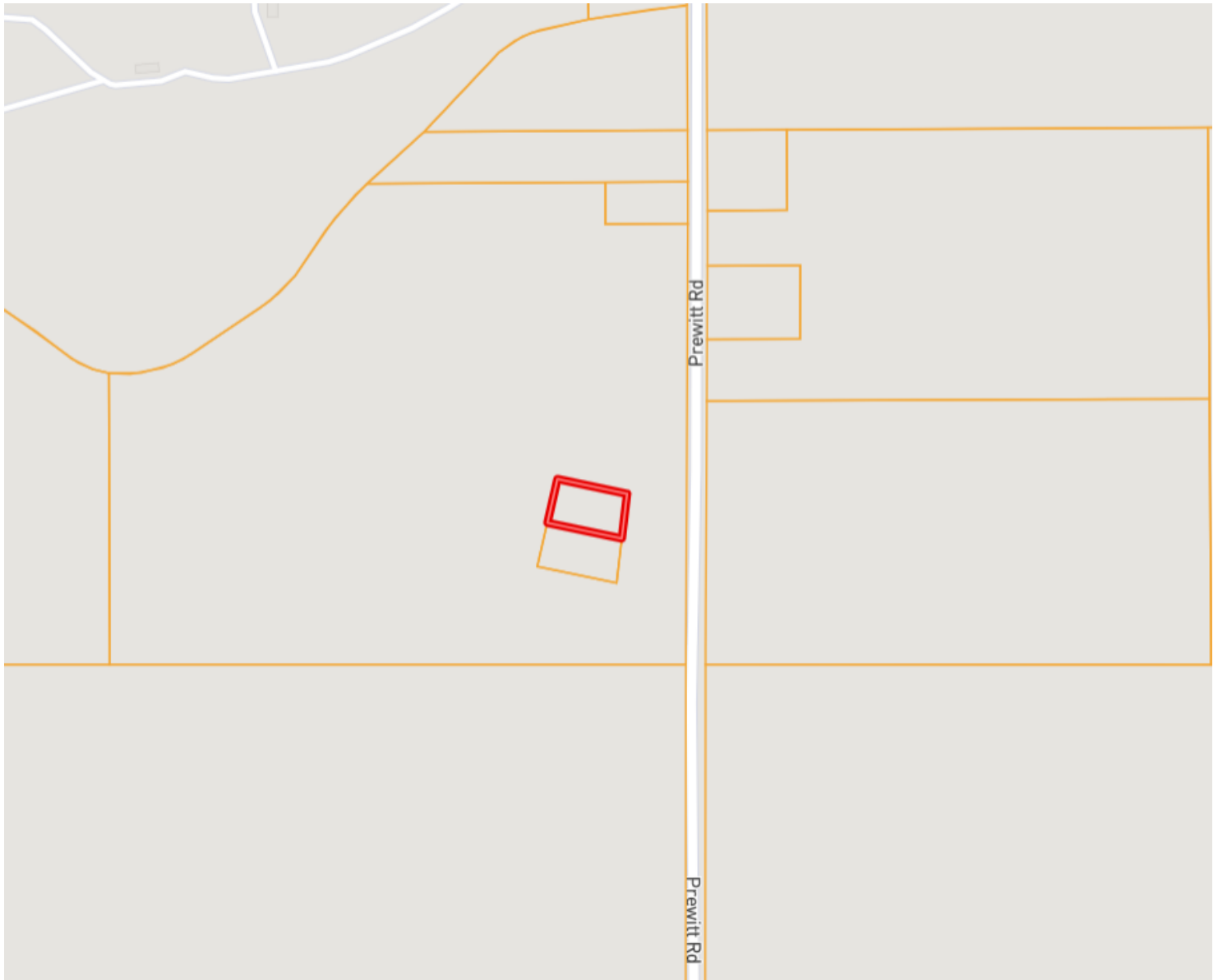
CHARLIE HEINSZ, REALTOR®
Charlie@TomSmithLand.com
662.441.2500 **office** | 662.719.7218 **cell**



TomSmithLandandHomes.com

Information is believed to be accurate but not guaranteed.

OWNERSHIP MAP



Call me today!

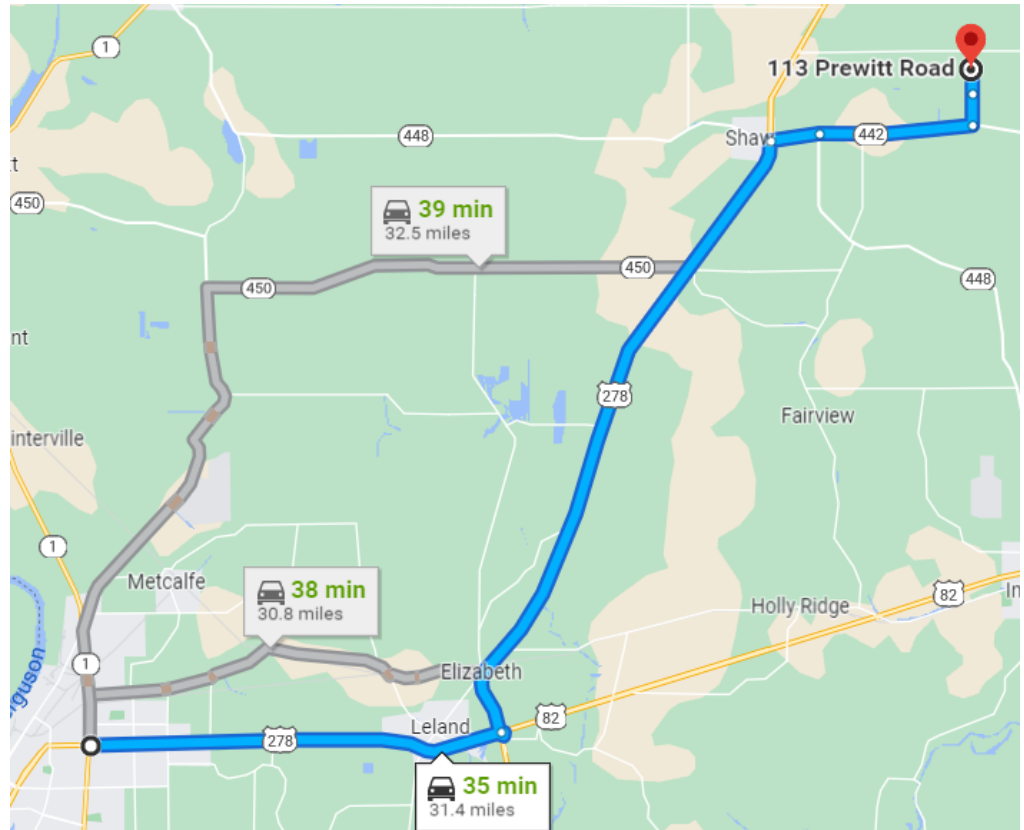
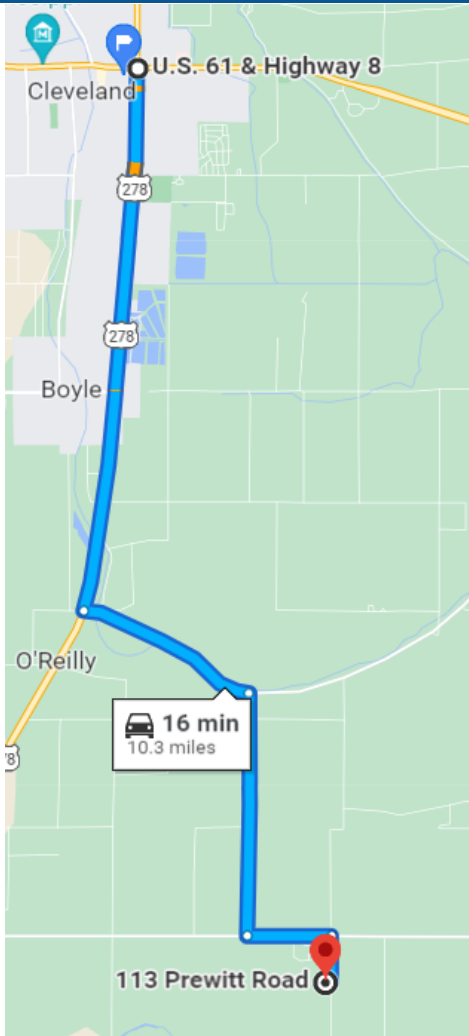
CHARLIE HEINSZ, REALTOR®
Charlie@TomSmithLand.com
662.441.2500 **office** | 662.719.7218 **cell**



TomSmithLandandHomes.com

Information is believed to be accurate but not guaranteed.

DIRECTIONAL MAP



Directions from the intersection of HWY 82 and HWY 1 in Greenville, MS: Travel East on Hwy 82 for 9.6 miles. Merge onto Hwy 61 towards Cleveland and travel 15.9 miles then turn right onto Hwy 448. Continue on for 4.69 miles and turn left onto King Dr. for 0.7 miles and continue onto Prewitt Rd for 0.6 miles and destination is on the left. [Click for Google Maps.](#)

Directions from the intersection of Hwy 61 and Hwy 8 Cleveland, MS: Travel South on Hwy 61 for 5.1 miles, turn left onto Jones Bayou Rd. Travel 1.7 miles, turn right onto Interstate Rd. and travel 2.3 miles until Sandpit Rd. Turn left and in 0.8 miles turn right onto Prewitt Rd. and the destination is on the right in 0.4 miles. [Click for Google Maps.](#)

Call me today!

CHARLIE HEINSZ, REALTOR®
Charlie@TomSmithLand.com
662.441.2500 office | 662.719.7218 cell



TomSmithLandandHomes.com

Information is believed to be accurate but not guaranteed.