

3± ACRE HOMESITE IN RANKIN COUNTY, MS



\$145,000

Take a look at this excellent 3± acre homesite in Rankin County, MS! This cleared 3± acre lot is the last available lot in the subdivision and is located in the North West Rankin School District! Utilities to this lot are available and near the property. This property is located less than 15 minutes from all of the amenities of the Dogwood Shopping centers in Flowood, MS, and is less than 10 minutes from the fun that can be found at the Ross Barnett Reservoir. Call Preston Smith for a showing today! Covenants and deed restrictions available by request.

Directions from the intersection of MS-25 and Airport Rd in Flowood, MS: Travel east on MS-25E, in 5.3 miles, turn right onto Vine Dr, in 2.1 miles, continue onto Baker Ln, in .5 miles, turn right onto Virginia Valley Dr, the property will be on the left in .4 miles.

[GOOGLE MAP LINK](#)

Call me today!

PRESTON SMITH, MANAGING BROKER
Preston@TomSmithLand.com
601.990.5070 **office** | 601.209.7150 **cell**



TomSmithLandandHomes.com

Information is believed to be accurate but not guaranteed.



Call me today!

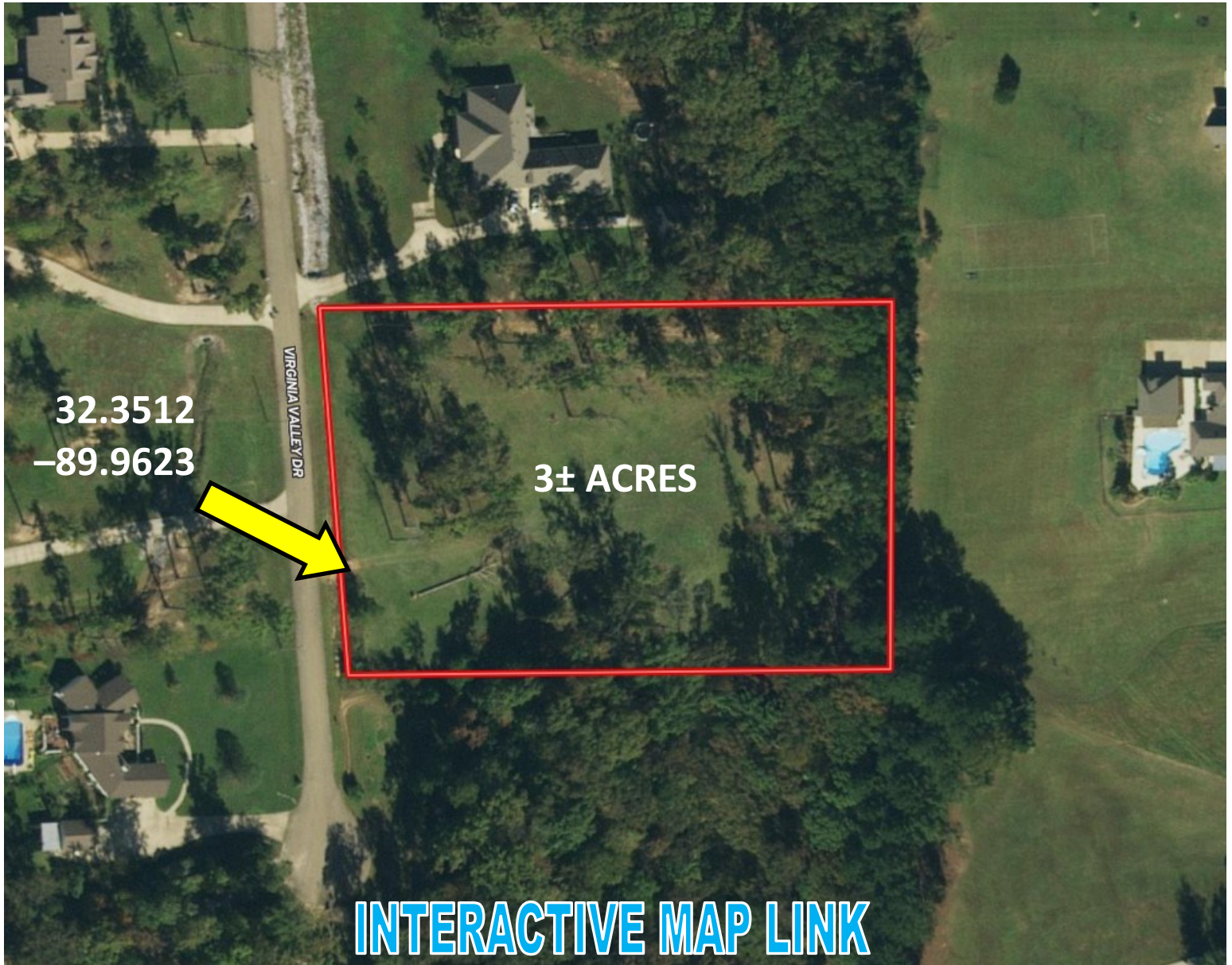
PRESTON SMITH, MANAGING BROKER
Preston@TomSmithLand.com
601.990.5070 office | 601.209.7150 cell



TomSmithLandandHomes.com

Information is believed to be accurate but not guaranteed.

Aerial Map



Call me today!

PRESTON SMITH, MANAGING BROKER
Preston@TomSmithLand.com
601.990.5070 **office** | 601.209.7150 **cell**

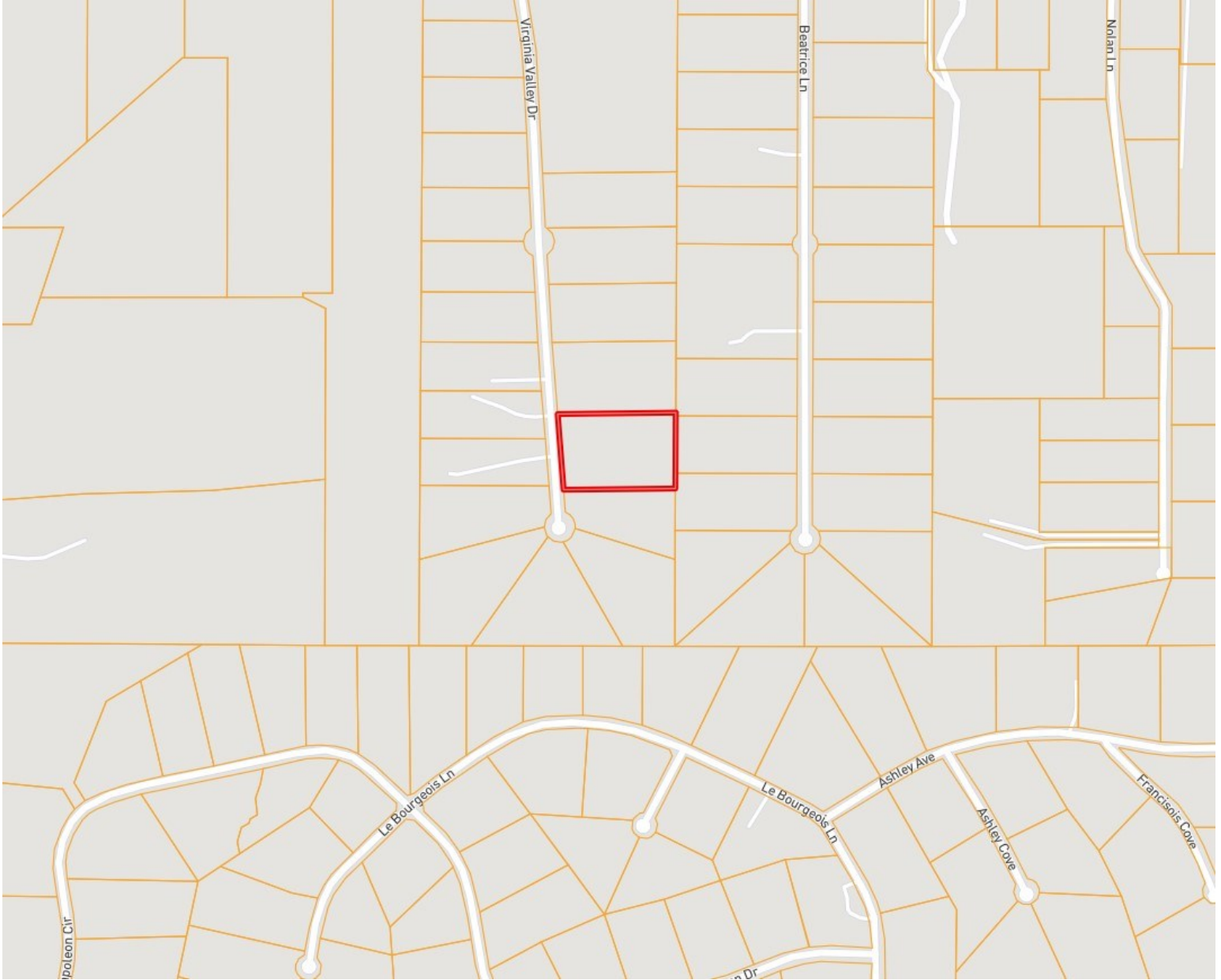


Expect More. Get More.

TomSmithLandandHomes.com

Information is believed to be accurate but not guaranteed.

Ownership Map



Call me today!

PRESTON SMITH, MANAGING BROKER
Preston@TomSmithLand.com
601.990.5070 **office** | 601.209.7150 **cell**

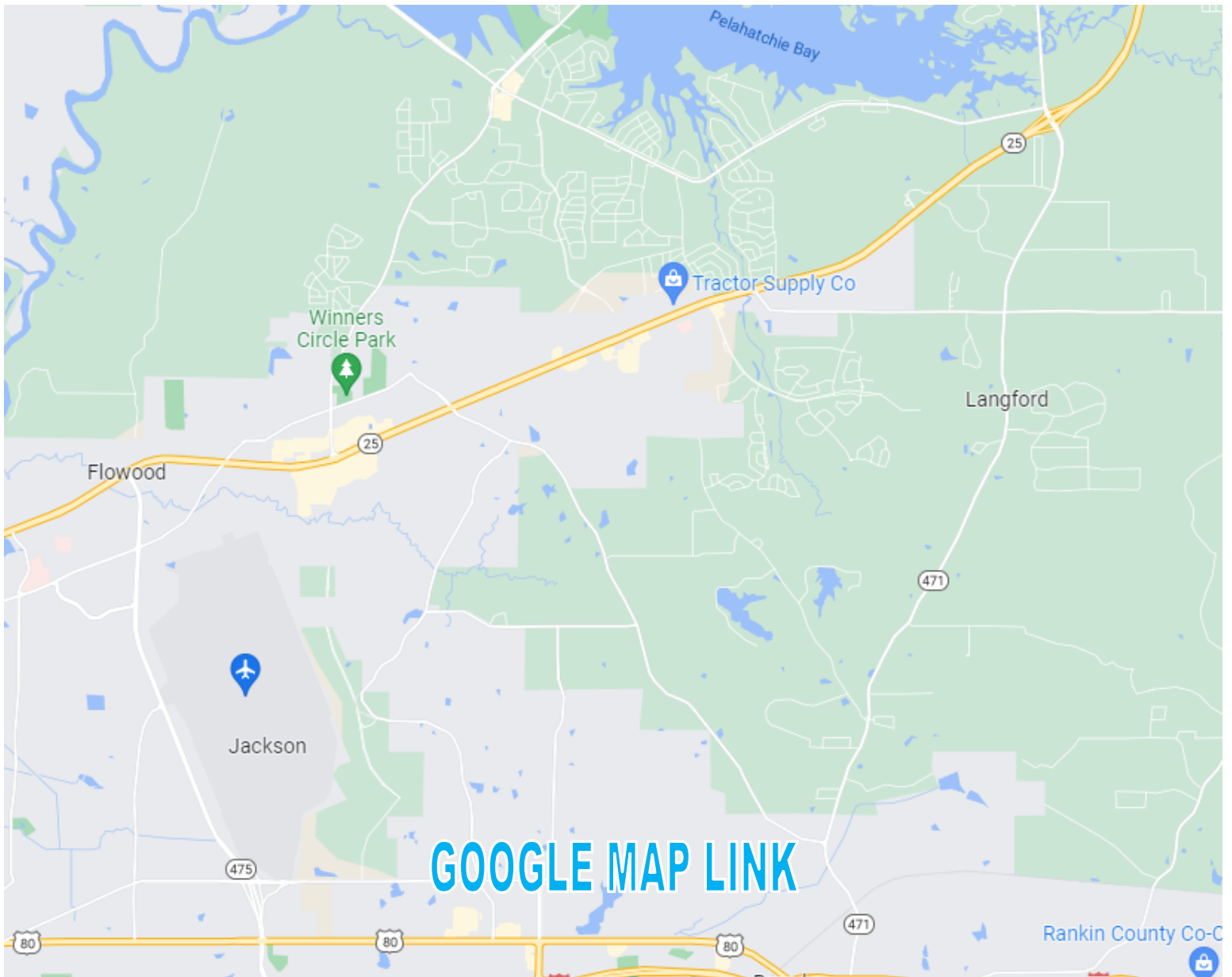


Expect More. Get More.

TomSmithLandandHomes.com

Information is believed to be accurate but not guaranteed.

Directional Map



Directions from the intersection of MS-25 and Airport Rd in Flowood, MS: Travel east on MS-25E, in 5.3 miles, turn right onto Vine Dr, in 2.1 miles, continue onto Baker Ln, in .5 miles, turn right onto Virginia Valley Dr, the property will be on the left in .4 miles.

Call me today!

PRESTON SMITH, MANAGING BROKER
Preston@TomSmithLand.com
601.990.5070 **office** | 601.209.7150 **cell**



Expect More. Get More.

TomSmithLandandHomes.com

Information is believed to be accurate but not guaranteed.