

# 0.49+/- Acre Residential Lot Near the Beach Harrison County, MS



4 King Circle, Pass Christian, MS 39571

Look at this great 0.49+/- acre residential lot in Harrison County, MS, in a developed subdivision just minutes from the beach! The property is convenient to the Gulf Coast and all its amenities; dining, shopping, casinos, fishing, boating, and more. Utilities are available and covenants apply. This property is located in Pass Christian near I-59 and is only 1 hour from New Orleans, LA. Call Tara today to schedule a viewing!

Directions from the intersection of US-90 and Henderson Avenue in Pass Christian, MS:  
Travel north on Henderson Avenue, in 1.2 miles, turn right onto King Circle. In 331 feet, the property will be on the left. Address: 4 King Circle, Pass Christian, MS 39571



*Call me today!*

**TARA WALKER SMITH, REALTOR®**  
Tara@TomSmithHomes.com  
601.990.5070 office | 601.407.4315 cell



**TomSmithLandandHomes.com**

Information is believed to be accurate but not guaranteed.



*Call me today!*

**TARA WALKER SMITH, REALTOR®**  
Tara@TomSmithHomes.com  
601.990.5070 office | 601.407.4315 cell



Expect More. Get More.

**TomSmithLandandHomes.com**

Information is believed to be accurate but not guaranteed.

# Aerial Map



[Click for Interactive Map](#)



*Call me today!*

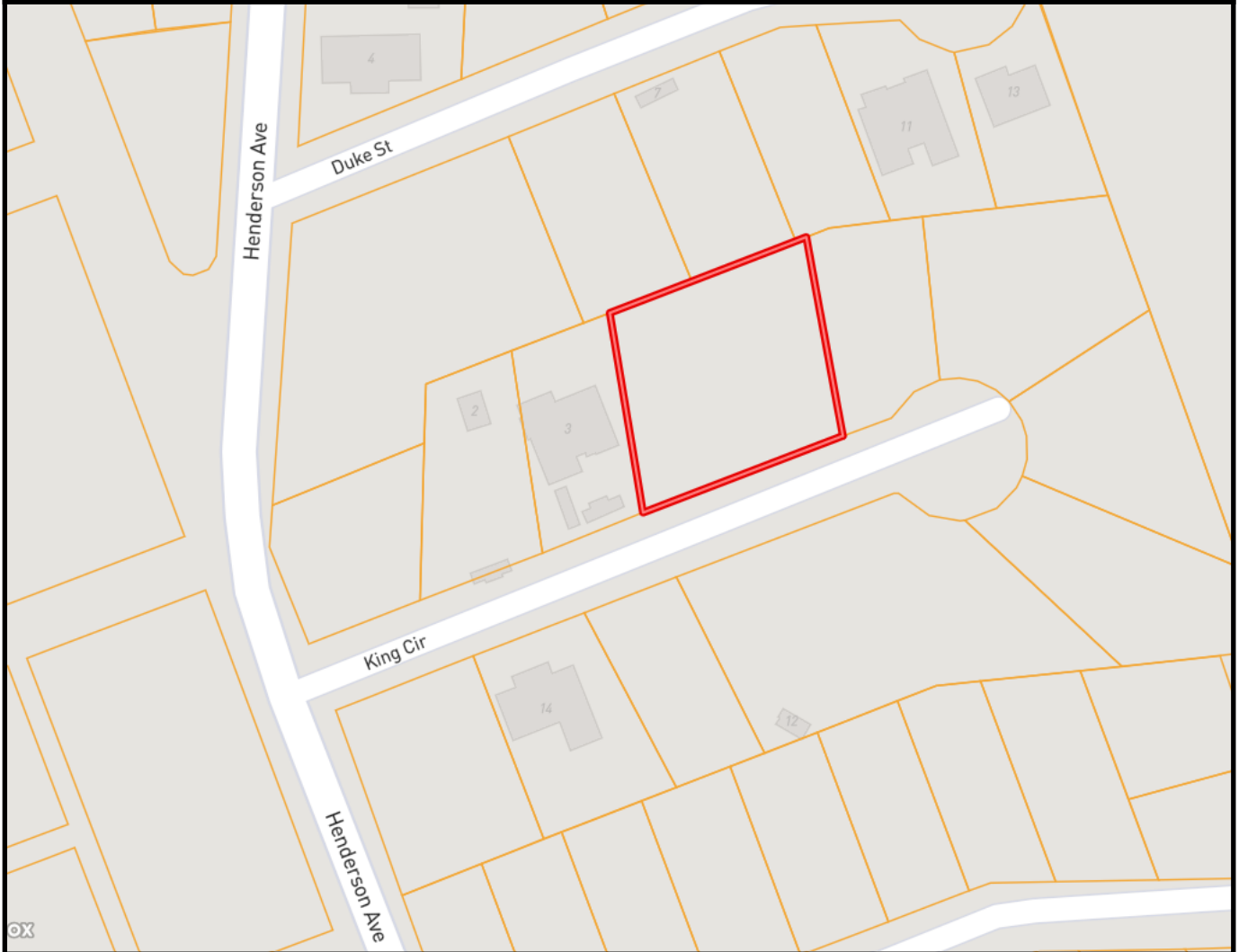
**TARA WALKER SMITH**, REALTOR®  
Tara@TomSmithHomes.com  
601.990.5070 **office** | 601.407.4315 **cell**



**TomSmithLandandHomes.com**

Information is believed to be accurate but not guaranteed.

# Ownership Map



*Call me today!*

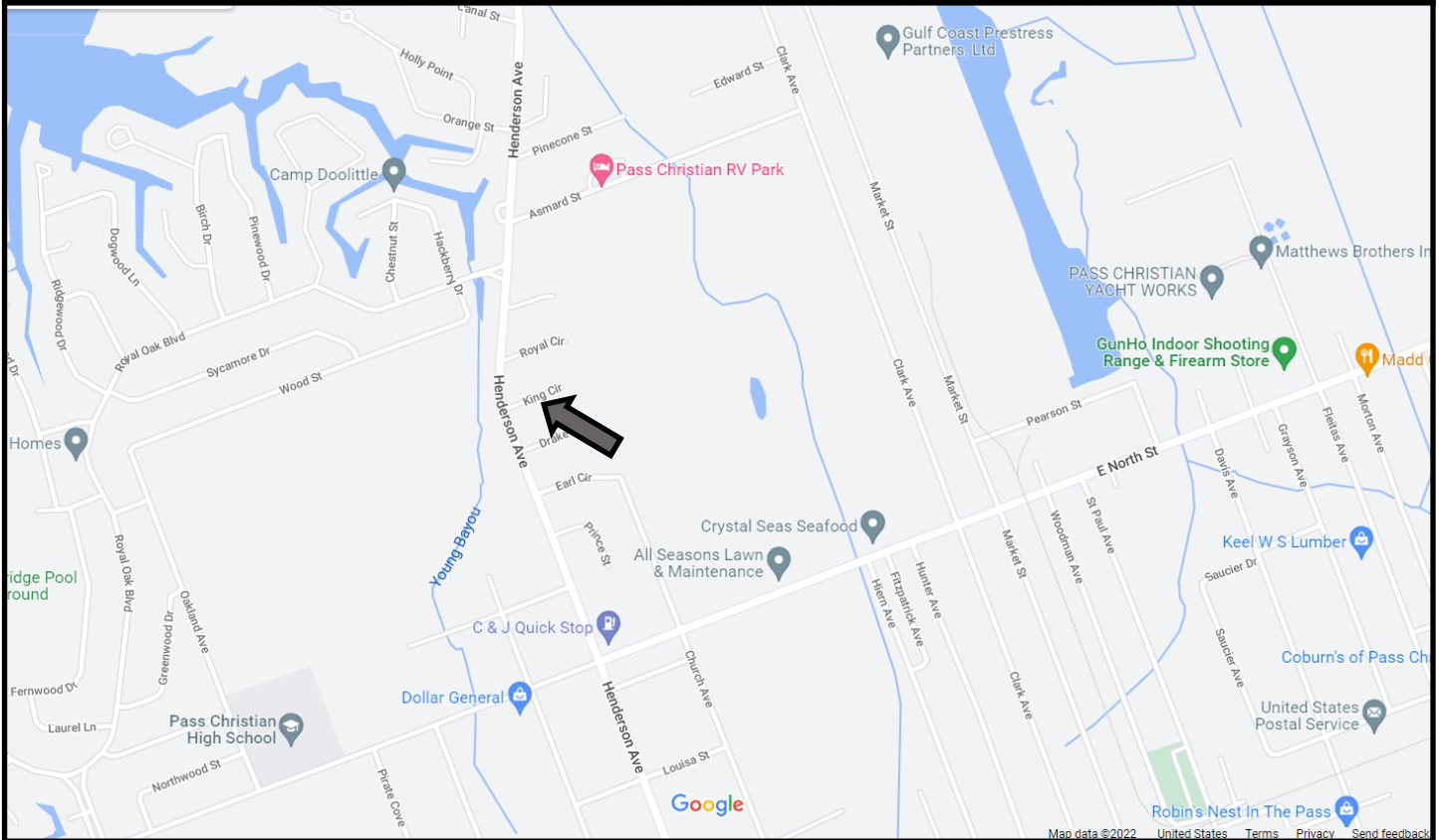
**TARA WALKER SMITH, REALTOR®**  
Tara@TomSmithHomes.com  
601.990.5070 office | 601.407.4315 cell



**TomSmithLandandHomes.com**

Information is believed to be accurate but not guaranteed.

# Directional Map



Directions from the intersection of US-90 and Henderson Avenue in Pass Christian, MS:

Travel north on Henderson Avenue, in 1.2 miles, turn right onto King Circle. In 331 feet, the property will be on the left. Address: 4 King Circle, Pass Christian, MS 39571

[Click for Google Map](#)



*Call me today!*

**TARA WALKER SMITH, REALTOR®**  
Tara@TomSmithHomes.com  
601.990.5070 office | 601.407.4315 cell



Expect More. Get More.

**TomSmithLandandHomes.com**

Information is believed to be accurate but not guaranteed.