

Custom Home on 6.37+/- acres Washington County, MS



2109 Highway 1 North Greenville, MS 38703

Take a look at this gorgeous, custom built, 3,149 sqft home located on 6.37+/- acres in Washington County, MS. This home has four bedrooms and two and a half bathrooms with antique heart pine floors throughout the main level. The chef's kitchen has stainless steel, Viking appliances, and granite countertops. There are two gas fireplaces, one in the den and the other in the main bedroom. The bathrooms have travertine tile and granite countertops. This home has a Bose speaker system wired through out and back porch. Robinson Electric installed a generator in 2020-2021. There is a screened in back porch and large concrete patio that leads to a guest house. Any man's dream is complete with the 40x80 insulated shop and fenced backyard. This 6+/- acres has a cypress barn with plenty of room for your animals. The home is approximately five minutes South of 27 Break Hunting Club. With that being said, this would also make an amazing hunting lodge. Please call Tracey Bell today for your private showing! (662)719-4720.

Directions from the intersection of Hwy 82 and Hwy 1 Greenville, MS: Travel North on Highway 1 for approximately 4.9 miles and the destination is on the right. [Click for Google Maps.](#)



Call me today!

TRACEY BELL, MANAGING BROKER
Tracey@TomSmithLand.com
662.441.2500 **office** | 662.719.4720 **cell**



TomSmithLandandHomes.com

Information is believed to be accurate but not guaranteed.



Call me today!

TRACEY BELL, MANAGING BROKER
Tracey@TomSmithLand.com
662.441.2500 **office** | 662.719.4720 **cell**



TomSmithLandandHomes.com

Information is believed to be accurate but not guaranteed.



Call me today!

TRACEY BELL, MANAGING BROKER
Tracey@TomSmithLand.com
662.441.2500 **office** | 662.719.4720 **cell**



TomSmithLandandHomes.com

Information is believed to be accurate but not guaranteed.



Call me today!

TRACEY BELL, MANAGING BROKER
Tracey@TomSmithLand.com
662.441.2500 **office** | 662.719.4720 **cell**



TomSmithLandandHomes.com

Information is believed to be accurate but not guaranteed.



Call me today!

TRACEY BELL, MANAGING BROKER
 Tracey@TomSmithLand.com
 662.441.2500 **office** | 662.719.4720 **cell**



Expect More. Get More.



TomSmithLandandHomes.com

Information is believed to be accurate but not guaranteed.



Call me today!

TRACEY BELL, MANAGING BROKER
Tracey@TomSmithLand.com
662.441.2500 **office** | 662.719.4720 **cell**



Expect More. Get More.

TomSmithLandandHomes.com

Information is believed to be accurate but not guaranteed.



Call me today!

TRACEY BELL, MANAGING BROKER
Tracey@TomSmithLand.com
662.441.2500 **office** | 662.719.4720 **cell**



TomSmithLandandHomes.com

Information is believed to be accurate but not guaranteed.

AERIAL MAP



[Click for Interactive Map](#)

Call me today!

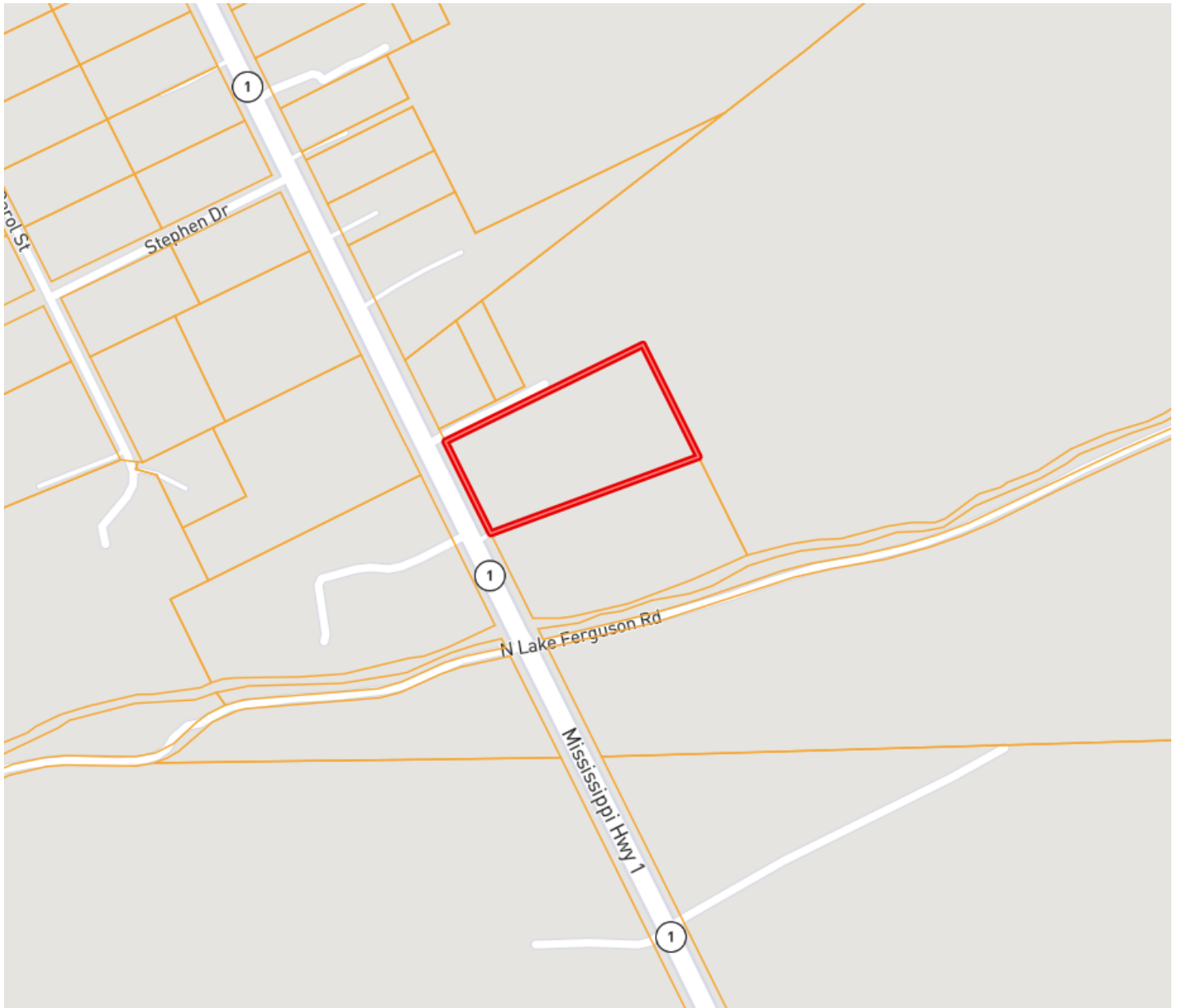
TRACEY BELL, MANAGING BROKER
Tracey@TomSmithLand.com
662.441.2500 **office** | 662.719.4720 **cell**



TomSmithLandandHomes.com

Information is believed to be accurate but not guaranteed.

OWNERSHIP MAP



Call me today!

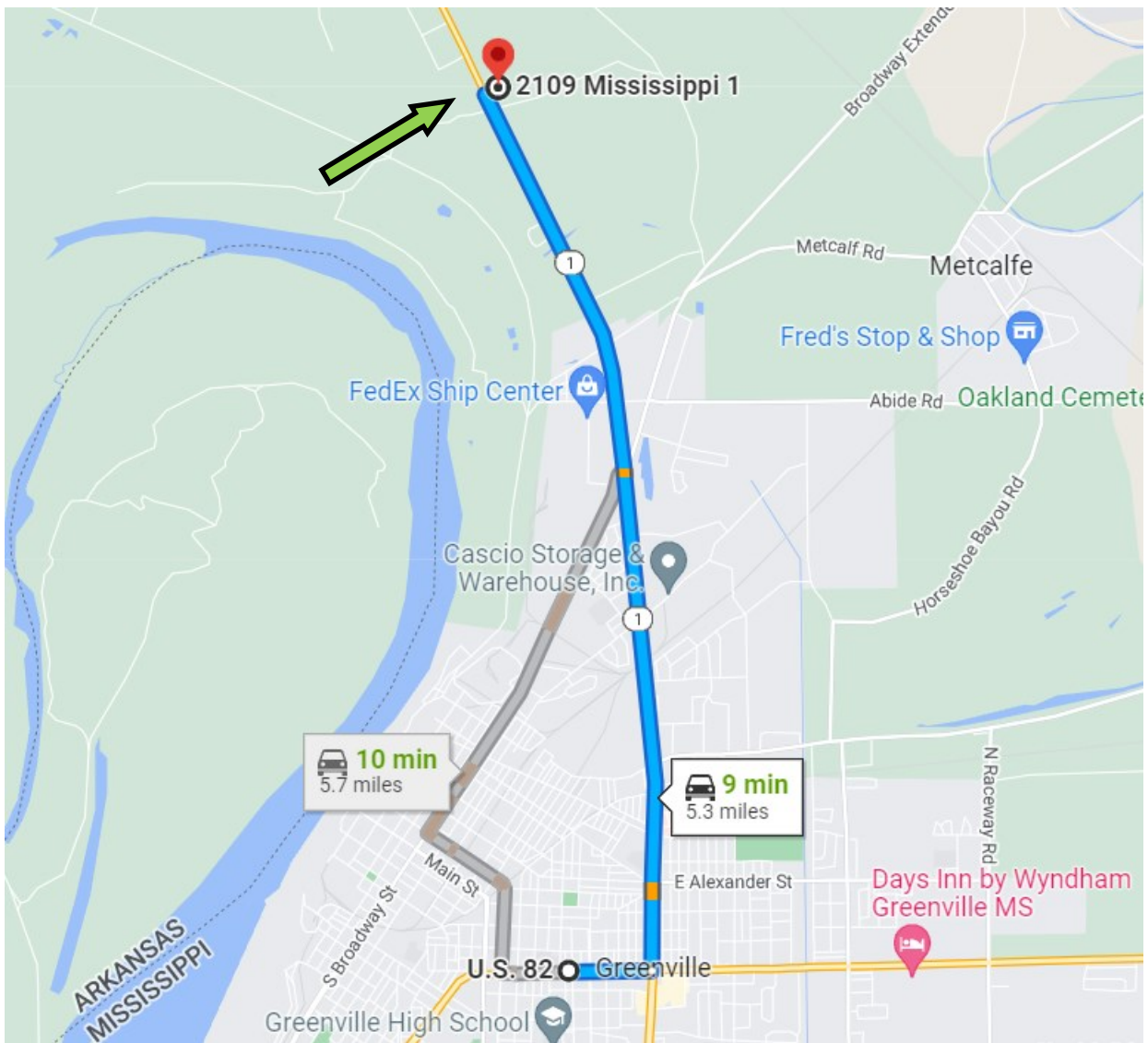
TRACEY BELL, MANAGING BROKER
Tracey@TomSmithLand.com
662.441.2500 **office** | 662.719.4720 **cell**



TomSmithLandandHomes.com

Information is believed to be accurate but not guaranteed.

DIRECTIONAL MAP



2109 Highway 1 North Greenville, MS 38703

Directions from the intersection of Hwy 82 and Hwy 1 Greenville, MS: Travel North on Highway 1 for approximately 4.9 miles and the destination is on the right.

[Click for Google Maps.](#)

Call me today!

TRACEY BELL, MANAGING BROKER
Tracey@TomSmithLand.com
662.441.2500 **office** | 662.719.4720 **cell**



TomSmithLandandHomes.com

Information is believed to be accurate but not guaranteed.