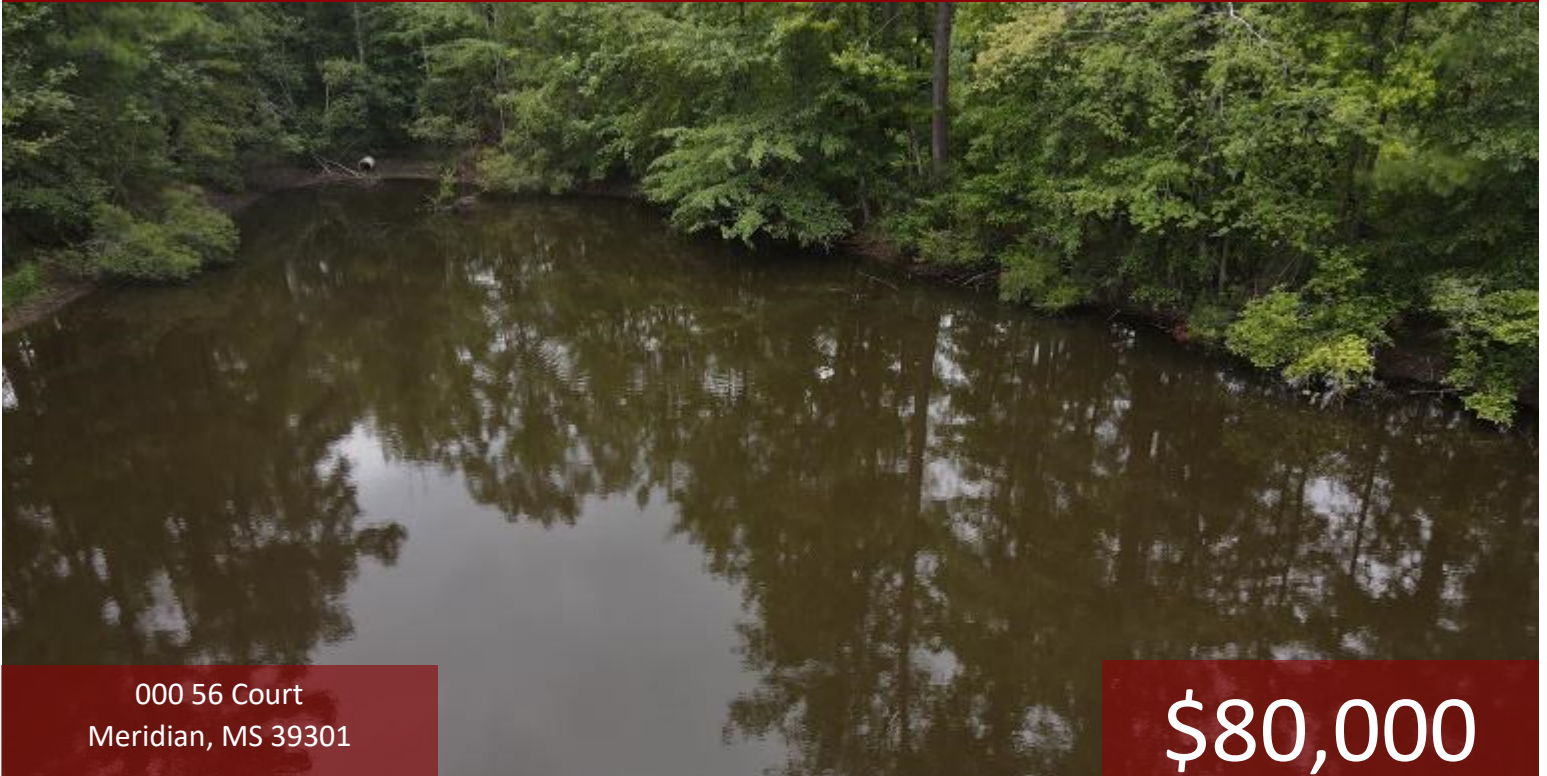


31.4+/- Acre Recreational Tract in Lauderdale County, MS



000 56 Court
Meridian, MS 39301

\$80,000

Solitude in the middle of town is exactly what you will find on this 31.4+/-acre recreational property inside the city limits of Meridian, MS, in Lauderdale County. This fantastic property can fill many needs all at once. If you are looking for recreational opportunities, you can expect great recreational enjoyment on this 4-year-old planted pine tract. Whether fishing in the shared pond, riding on the internal roads, or maybe a shot at a monster whitetail deer, this property has it all. If you are looking for a forever home with room to roam and quiet country life while being close to town, this unique property fits the bill. This wonderful tract is zoned R-1 and is ready for you to build on. If you are a developer looking for your next opportunity to build, give this one a look. Power and other utilities are available from 56th Court, just 180 feet away from the southern boundary. Call Clif Cannon today to schedule your private tour.

Directions from the intersection of Interstate 20 and 31st Ave S: Exit I-20 at Exit 152 and travel north on 31st Avenue South for .3 miles. Continue straight onto 29th Avenue and travel for 4.7 miles. Turn left onto 52nd Street and travel for .2 miles. Turn right onto 31st Place and travel for .3 miles. Turn right onto 55th Court / 30th Place and travel for .2 miles. Go straight across 56th Court down the small drive and you will enter the property.



Call me today!

CLIF CANNON, REALTOR®
Clif@TomSmithLand.com
601.990.5070 office | 601.565.1070 cell



TomSmithLandandHomes.com

Information is believed to be accurate but not guaranteed.



Call me today!



CLIF CANNON, REALTOR®
Clif@TomSmithLand.com
601.990.5070 office | 601.565.1070 cell



Expect More. Get More.

TomSmithLandandHomes.com

Information is believed to be accurate but not guaranteed.



Call me today!

CLIF CANNON, REALTOR®
Clif@TomSmithLand.com
601.990.5070 office | 601.565.1070 cell



Expect More. Get More.



TomSmithLandandHomes.com

Information is believed to be accurate but not guaranteed.



Call me today!

CLIF CANNON, REALTOR
 Clif@TomSmithLand.com
 601.990.5070 office | 601.565.1070 cell



**Tom Smith
LAND AND
HOMES**
 Expect More. Get More.



TomSmithLandandHomes.com

Information is believed to be accurate but not guaranteed.

Aerial Map

31.4+/- Acres

[Interactive Map](#)

32.4203, -88.7073

pbox

56TH CT

Call me today!

CLIF CANNON, REALTOR®
Clif@TomSmithLand.com
601.990.5070 office | 601.565.1070 cell



TomSmithLandandHomes.com

Information is believed to be accurate but not guaranteed.

Flood Map



Call me today!

CLIF CANNON, REALTOR®

Clif@TomSmithLand.com

601.990.5070 **office** | 601.565.1070 **cell**



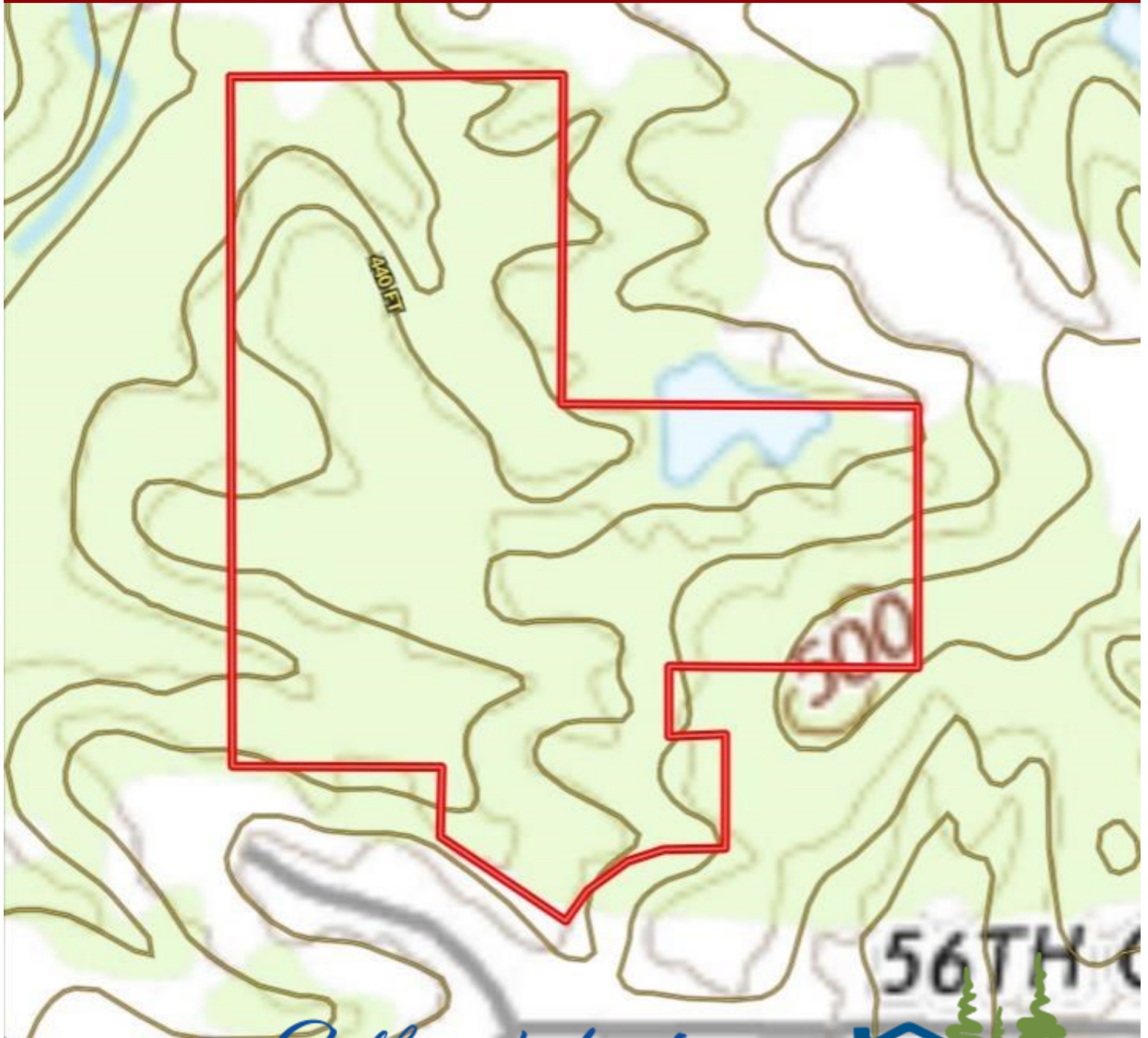
Expect More. Get More.



TomSmithLandandHomes.com

Information is believed to be accurate but not guaranteed.

Topographic Map



Call me today!

CLIF CANNON, REALTOR®
Clif@TomSmithLand.com
601.990.5070 office | 601.565.1070 cell

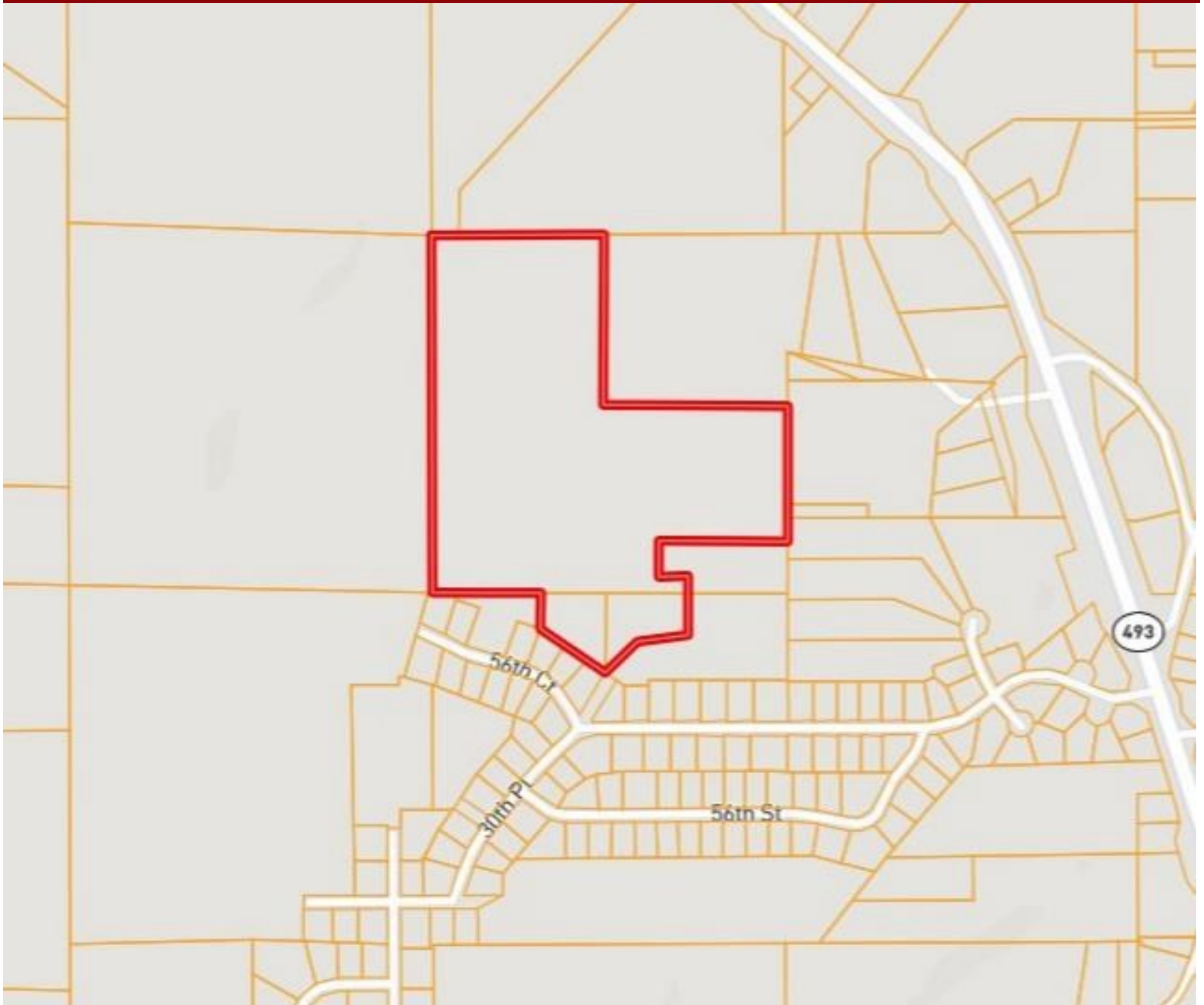


Expect More. Get More.

TomSmithLandandHomes.com

Information is believed to be accurate but not guaranteed.

Ownership Map



Call me today!

CLIF CANNON, REALTOR®

Clif@TomSmithLand.com

601.990.5070 office | 601.565.1070 cell

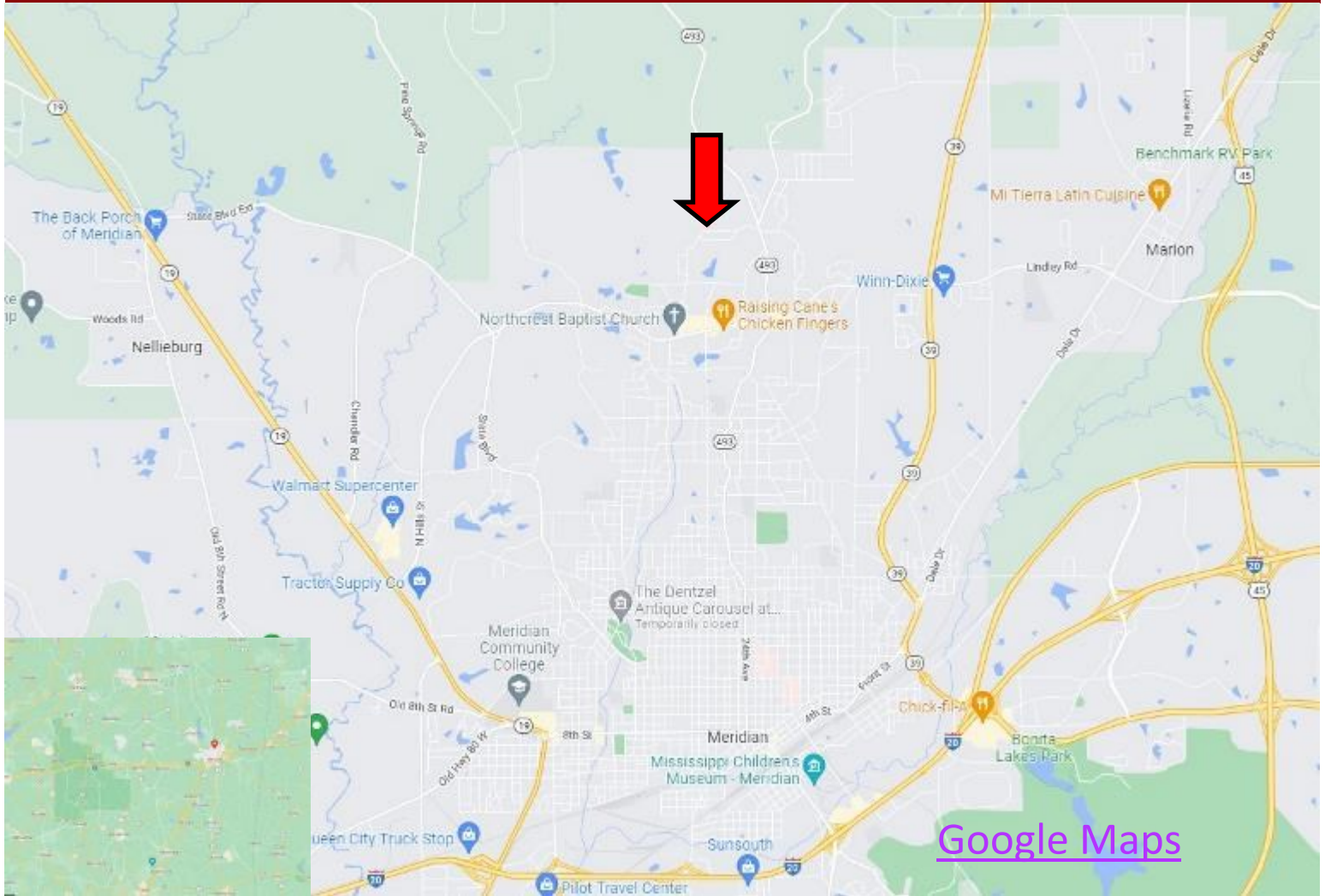


Expect More. Get More.

TomSmithLandandHomes.com

Information is believed to be accurate but not guaranteed.

Directional Map



Directions from the intersection of Interstate 20 and 31st Ave S: Exit I-20 at Exit 152 and travel north on 31st Avenue South for .3 miles. Continue straight onto 29th Avenue and trave for 4.7 miles. Turn left onto 52nd Street and travel for .2 miles. Turn right onto 31st Place and travel for .3 miles. Turn right onto 55th Court / 30th Place and travel for .2 miles. Go straight across 56th Court down the small drive and you will enter the property.

000 56 Court
Meridian, MS 39301

Call me today!

CLIF CANNON, REALTOR®

Clif@TomSmithLand.com

601.990.5070 office | 601.565.1070 cell



TomSmithLandandHomes.com

Information is believed to be accurate but not guaranteed.