

Spacious Home on 0.7+/- Acre Hancock County, MS



6560 Lakeshore Road Bay St. Louis, MS, 39520

Are you looking for a home in Hancock County, MS, with lots of space and a mother-in-law suite? Take a look at this property with tons of room for possibilities. This four bedroom, two bathroom home has two kitchens, and two living rooms and features over 2,500+/- sq. ft. of living space. This property is situated on 0.7+/- acres in Bay St. Louis, within minutes of the beach, and is located near a public boat launch, the Silver Slipper casino, dining, and much more! The property is zoned residential and commercial, making the possibilities endless. Some ideas include a new business, bed and breakfast, Airbnb, or rental property. The home features a beautiful landscaped yard which is partially fenced, screened front and back porch, a water feature in the back yard and 2 car covered carport. Call Tara or Danny today to schedule a viewing!

Directions from I-10 W in Bay St. Louis, MS: Take exit 2 for MS-607 S. Travel 0.3 miles and turn left onto MS-607 S. Travel 5.9 miles and continue straight on US-90 E. Travel 3 miles and turn right onto Lakeshore Road. The home will be on the left in 2.5 miles.

Address: 6560 Lakeshore Road Bay St. Louis, MS, 39520



TARA SMITH, REALTOR®
Tara@TomSmithHomes.com
601.990.5070 office | 601.407.4315 cell



Call us today!



DANNY WILLOUGHBY, REALTOR®
Danny@TomSmithLand.com
601.898.2772 office | 601.270.9995 cell

TomSmithLandandHomes.com

Information is believed to be accurate but not guaranteed.





TARA SMITH, REALTOR®
Tara@TomSmithHomes.com
601.990.5070 office | 601.407.4315 cell



Expect More. Get More.

Call us today!



DANNY WILLOUGHBY, REALTOR®
Danny@TomSmithLand.com
601.898.2772 office | 601.270.9995 cell

TomSmithLandandHomes.com

Information is believed to be accurate but not guaranteed.





TARA SMITH, REALTOR®
Tara@TomSmithHomes.com
601.990.5070 office | 601.407.4315 cell



Expect More. Get More.

Call us today!



DANNY WILLOUGHBY, REALTOR®
Danny@TomSmithLand.com
601.898.2772 office | 601.270.9995 cell

TomSmithLandandHomes.com

Information is believed to be accurate but not guaranteed.





TARA SMITH, REALTOR®
Tara@TomSmithHomes.com
601.990.5070 office | 601.407.4315 cell



Expect More. Get More.

Call us today!



DANNY WILLOUGHBY, REALTOR®
Danny@TomSmithLand.com
601.898.2772 office | 601.270.9995 cell

TomSmithLandandHomes.com

Information is believed to be accurate but not guaranteed.



Aerial Map



[Click for Interactive Map](#)



TARA SMITH, REALTOR®
Tara@TomSmithHomes.com
601.990.5070 office | 601.407.4315 cell



Expect More. Get More.

Call us today!



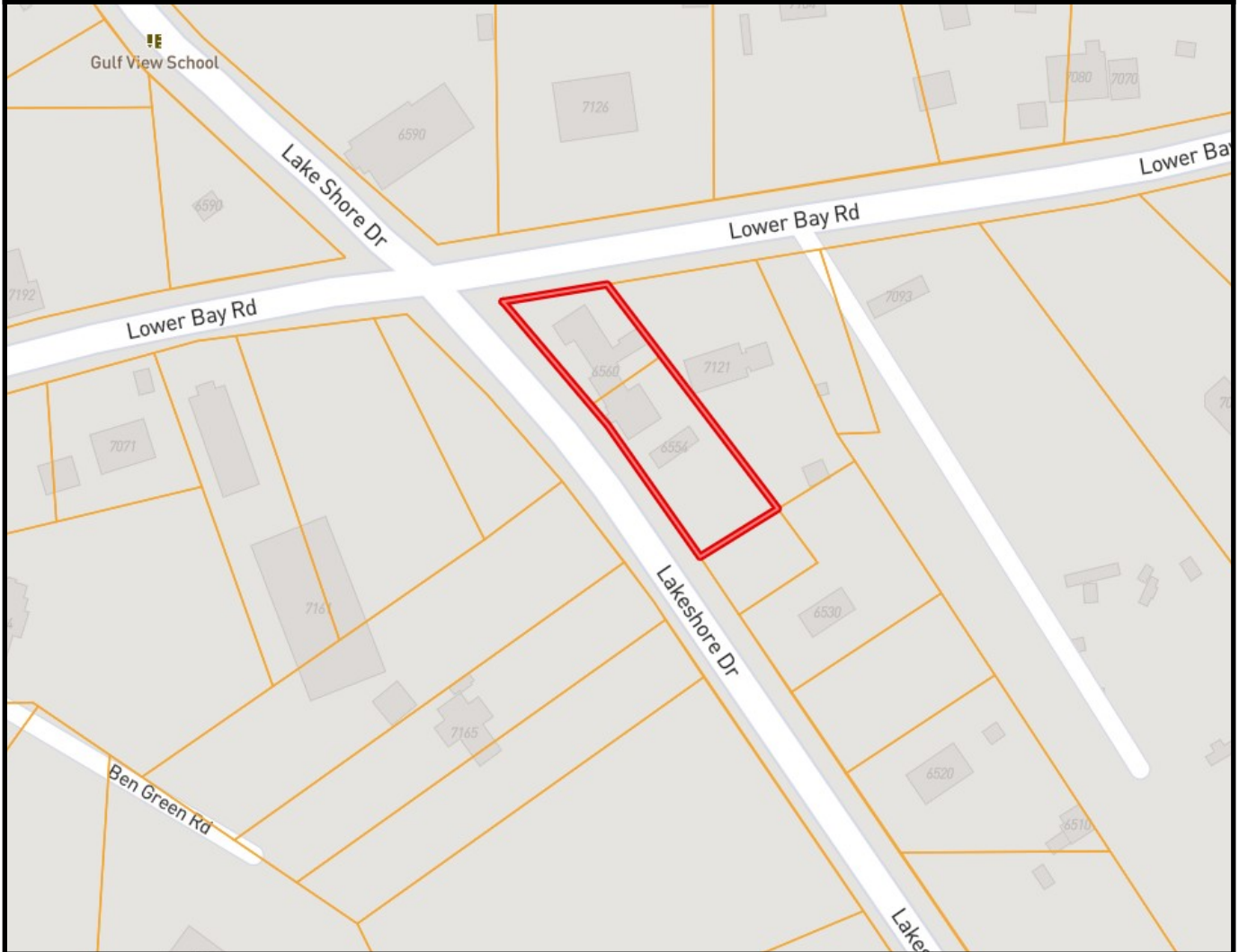
DANNY WILLOUGHBY, REALTOR®
Danny@TomSmithLand.com
601.898.2772 office | 601.270.9995 cell

TomSmithLandandHomes.com

Information is believed to be accurate but not guaranteed.



Ownership Map



TARA SMITH, REALTOR®
Tara@TomSmithHomes.com
601.990.5070 office | 601.407.4315 cell



Call us today!



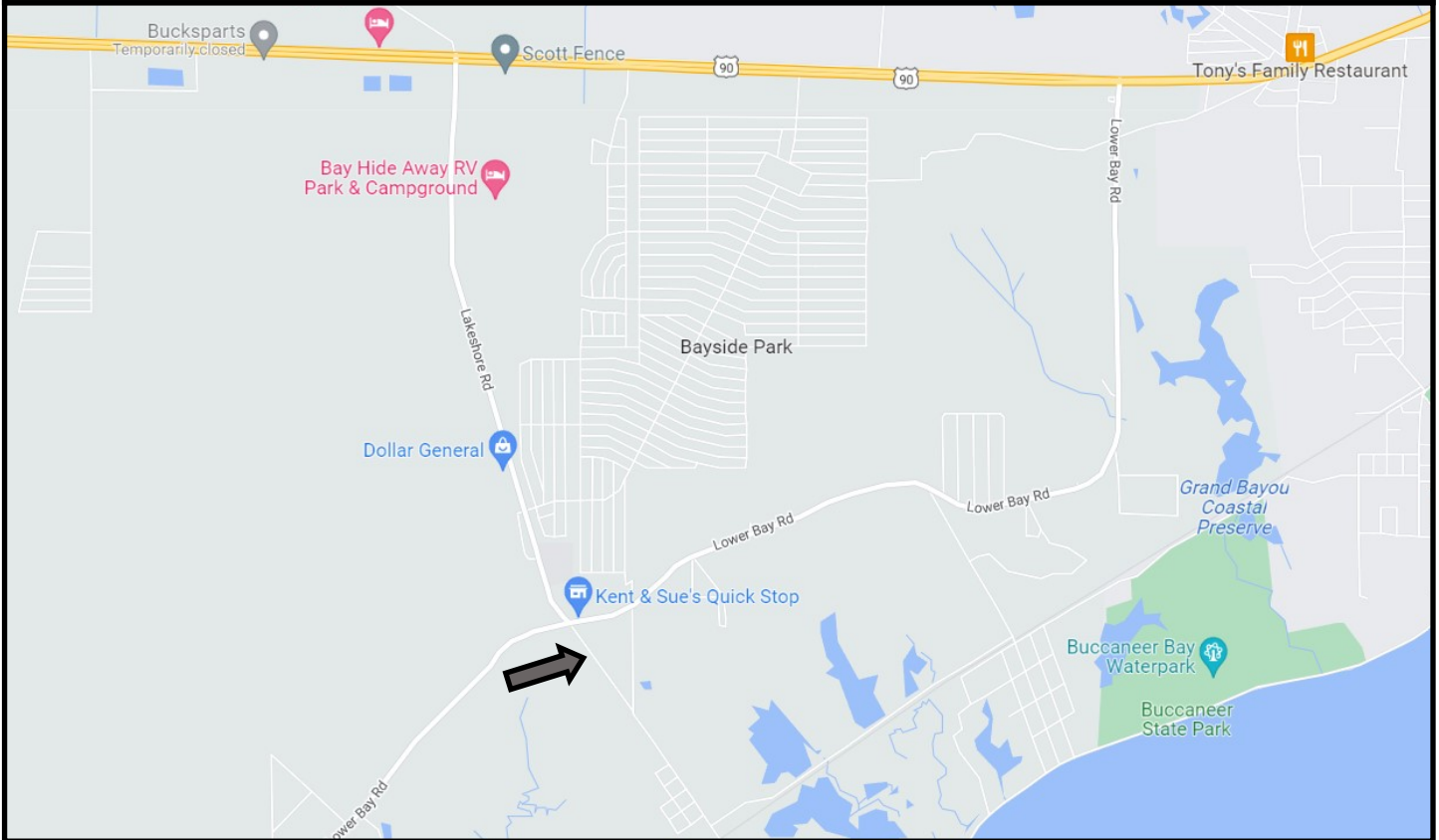
DANNY WILLOUGHBY, REALTOR®
Danny@TomSmithLand.com
601.898.2772 office | 601.270.9995 cell

TomSmithLandandHomes.com

Information is believed to be accurate but not guaranteed.



Directional Map



Directions from I-10 W in Bay St. Louis, MS: Take exit 2 for MS-607 S. Travel 0.3 miles and turn left onto MS-607 S. Travel 5.9 miles and continue straight on US-90 E. Travel 3 miles and turn right onto Lakeshore Road. The home will be on the left in 2.5 miles.
Address: 6560 Lakeshore Road Bay St. Louis, MS, 39520

[Click for Google Map](#)



TARA SMITH, REALTOR®
Tara@TomSmithHomes.com
601.990.5070 office | 601.407.4315 cell



Expect More. Get More.

Call us today!



DANNY WILLOUGHBY, REALTOR®
Danny@TomSmithLand.com
601.898.2772 office | 601.270.9995 cell

TomSmithLandandHomes.com

Information is believed to be accurate but not guaranteed.

