

# 46± Acres of Beautiful Hardwoods in Hinds County, MS



This beautiful Hinds County tract is located in Bolton, MS. This is some of the best deer and turkey hunting in the state. It has gated access off of Cox Ferry Rd and offers outstanding hardwoods and this is the type of property all hunters dream of. There is an established road down the middle of the property with a cleared site that would be good for a home or camp. There are utilities available on the road. A live spring fed creek runs year-round making for a great water source for wildlife. Don't miss out on this opportunity to own hunting land like in this area. This one is a must see, call Preston or Travis today

Directions from four way stop of Hwy 22 and Hwy 49 in Flora, MS: Head north on US 49 N toward Central Blvd for 0.8 miles then Turn left onto Cox Ferry Rd in 6.8 miles then Turn right onto Joe Hall Rd in 2.8 miles then Turn right onto Johnson Line Rd in 1.4 miles then Slight left onto Coxs Ferry Rd for 0.8 miles destination will be on the right

[Google Map Link](#)



**PRESTON SMITH**, MANAGING BROKER  
Preston@TomSmithLand.com  
601.990.5070 office | 601.209.7150 cell



*Call us today!*



**TRAVIS SMITH**, REALTOR®  
Travis@TomSmithLand.com  
601.990.5070 office | 601.600.0428 cell

**TomSmithLandandHomes.com**

Information is believed to be accurate but not guaranteed.







**PRESTON SMITH**, MANAGING BROKER  
 Preston@TomSmithLand.com  
 601.990.5070 office | 601.209.7150 cell



**TRAVIS SMITH**, REALTOR®  
 Travis@TomSmithLand.com  
 601.990.5070 office | 601.600.0428 cell

**TomSmithLandandHomes.com**

Information is believed to be accurate but not guaranteed.







**PRESTON SMITH**, MANAGING BROKER  
 Preston@TomSmithLand.com  
 601.990.5070 **office** | 601.209.7150 **cell**



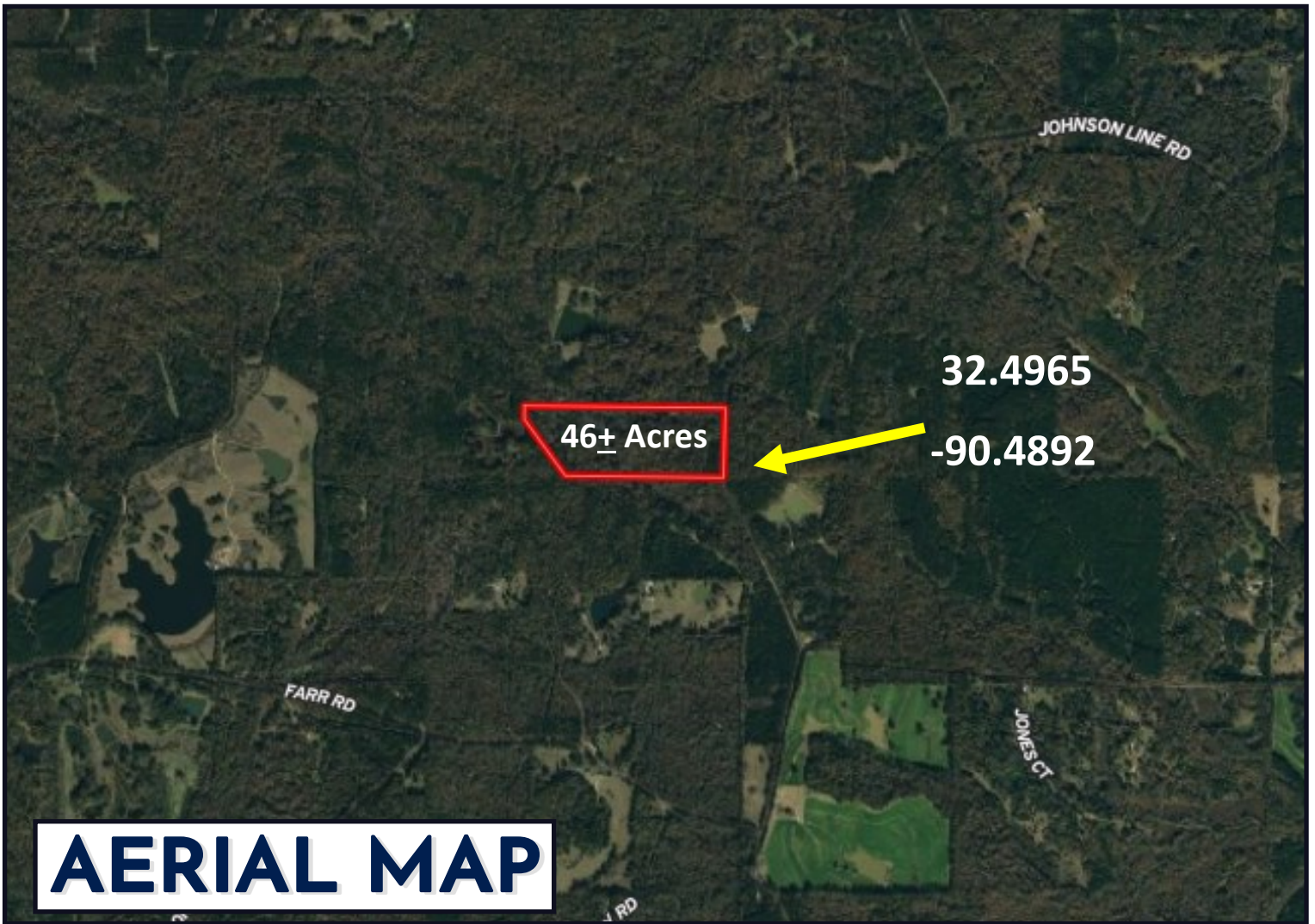
**TRAVIS SMITH**, REALTOR®  
 Travis@TomSmithLand.com  
 601.990.5070 **office** | 601.600.0428 **cell**

**TomSmithLandandHomes.com**

Information is believed to be accurate but not guaranteed.







[CLICK HERE FOR AN INTERACTIVE MAP](#)

**PRESTON SMITH**, MANAGING BROKER  
Preston@TomSmithLand.com  
601.990.5070 **office** | 601.209.7150 **cell**



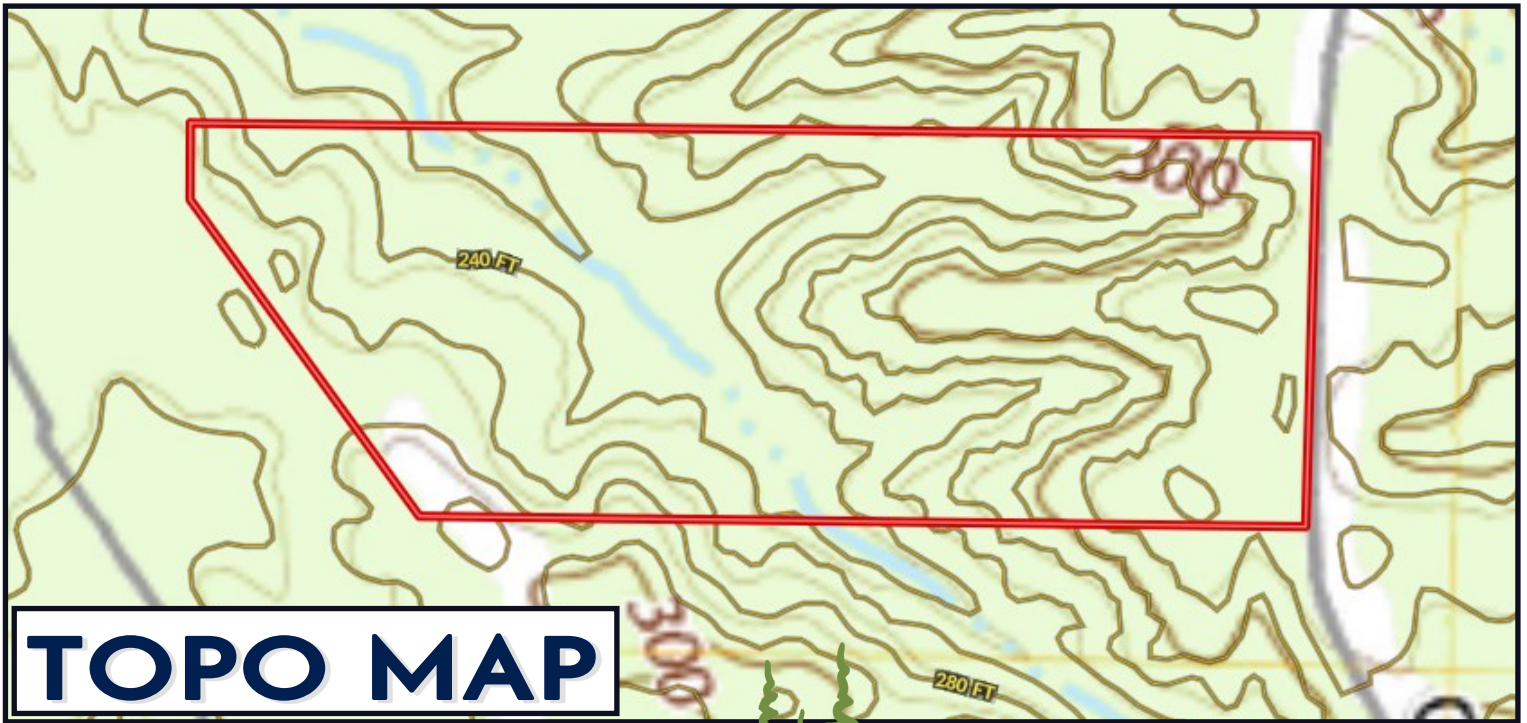
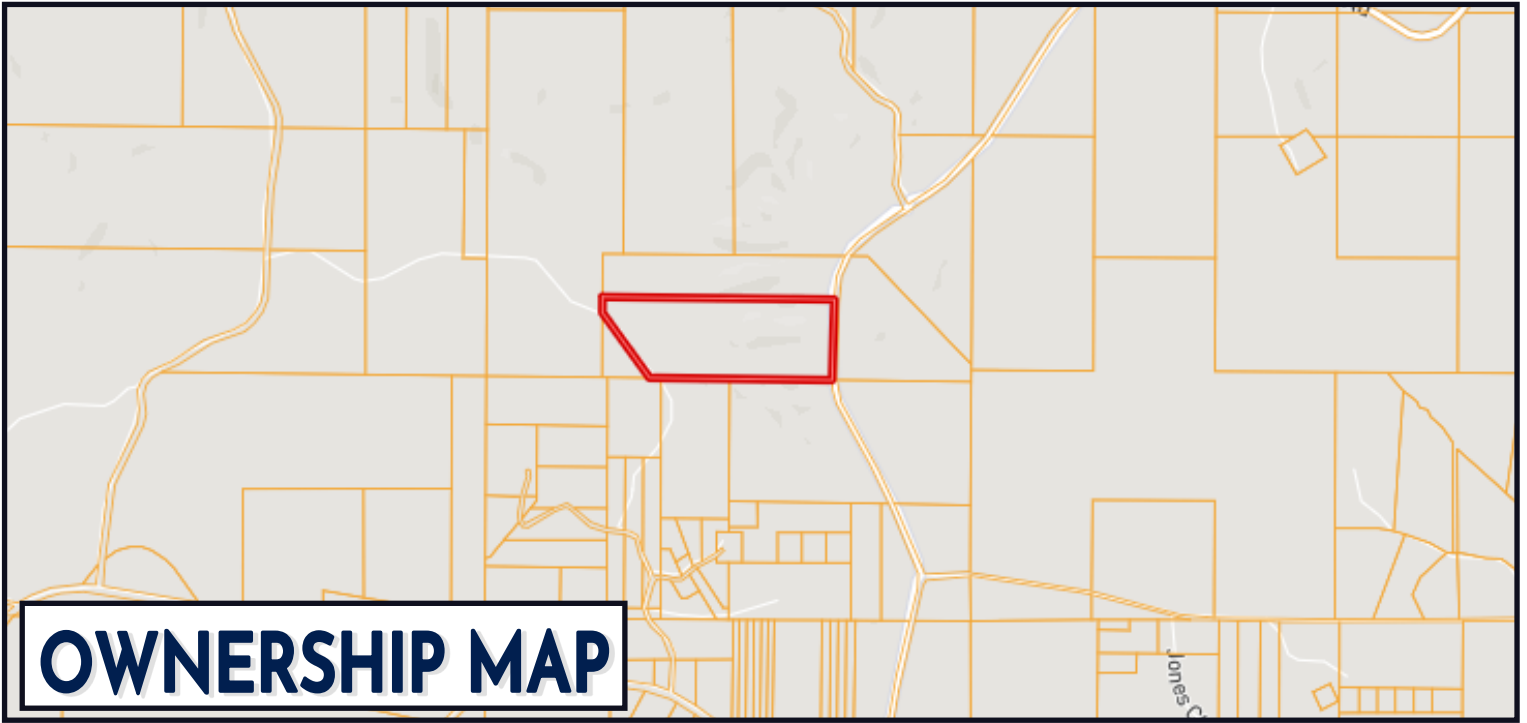
**TRAVIS SMITH**, REALTOR®  
Travis@TomSmithLand.com  
601.990.5070 **office** | 601.600.0428 **cell**

[TomSmithLandandHomes.com](http://TomSmithLandandHomes.com)

Information is believed to be accurate but not guaranteed.







**PRESTON SMITH**, MANAGING BROKER  
Preston@TomSmithLand.com  
601.990.5070 **office** | 601.209.7150 **cell**

**TRAVIS SMITH**, REALTOR®  
Travis@TomSmithLand.com  
601.990.5070 **office** | 601.600.0428 **cell**

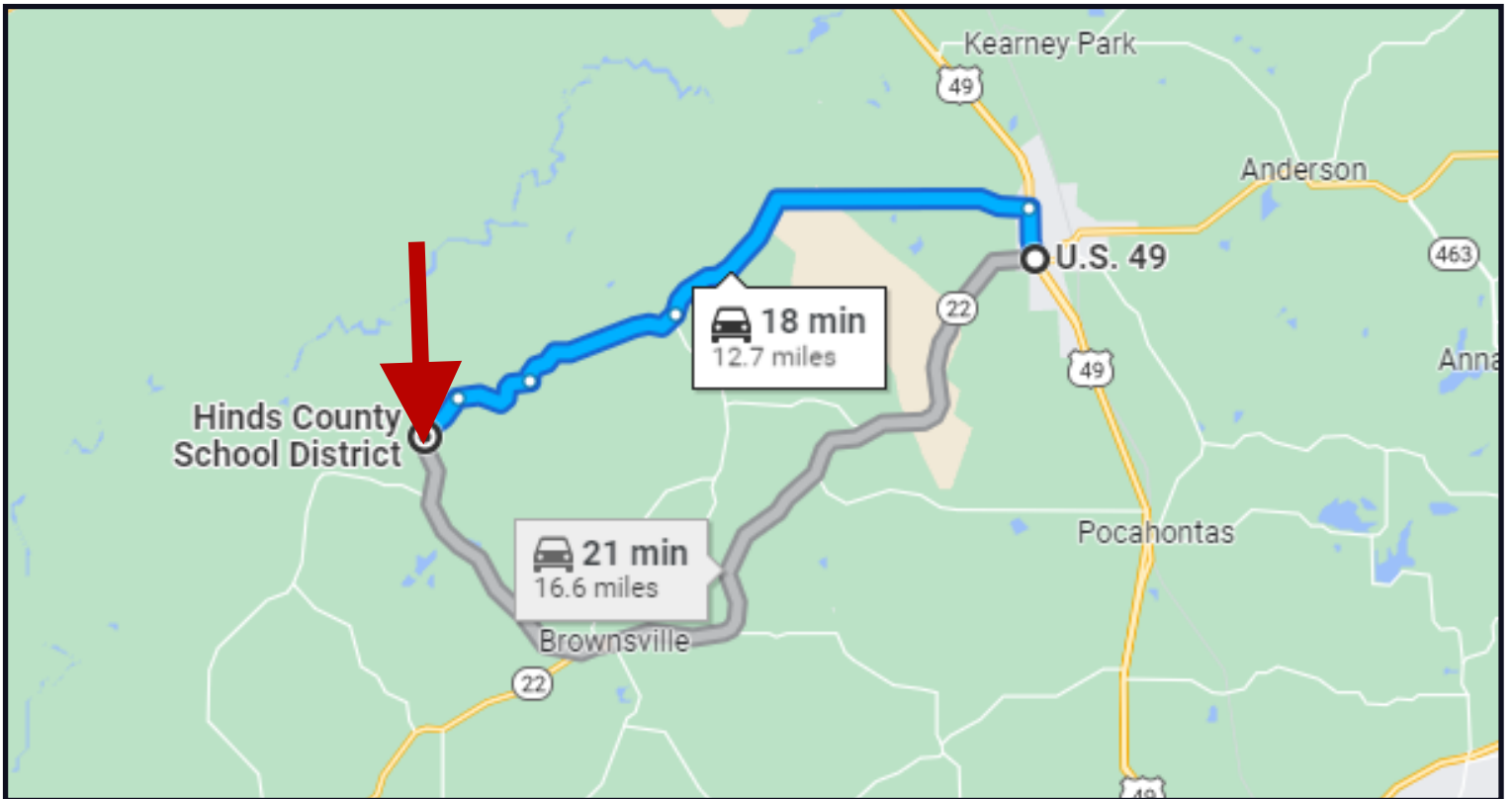
**TomSmithLandandHomes.com**

Information is believed to be accurate but not guaranteed.





# DIRECTIONAL MAP



## Directions from four way stop of Hwy 22 and Hwy 49 in Flora, MS:

Travel north on US 49 N toward Central Blvd for 0.8 miles then turn left onto Cox Ferry Rd and travel 6.8 miles. Turn right onto Joe Hall Rd and travel 2.8 miles. Turn right onto Johnson Line Rd and travel 1.4 miles, take a slight left onto Coxs Ferry Rd and travel 0.8 miles. The property will be on the right.

[Google Map Link](#)



**PRESTON SMITH**, MANAGING BROKER  
Preston@TomSmithLand.com  
601.990.5070 office | 601.209.7150 cell



Expect More. Get More.

*Call us today!*



**TRAVIS SMITH**, REALTOR®  
Travis@TomSmithLand.com  
601.990.5070 office | 601.600.0428 cell

**TomSmithLandandHomes.com**

Information is believed to be accurate but not guaranteed.

