

BEAUTIFUL HOME LOCATED IN THE NORTHBAY SUBDIVISION & THE MADISON SCHOOL DISTRICT

12 NORTHBAY COURT, MADISON, MS 39110



Located in the heart of Madison County, MS, you will fall in love with this home in a cul-de-sac of the popular Northbay subdivision. Within walking distance to a great neighborhood park on the Ross Barnett Reservoir, tennis courts, community pool, and clubhouse. This classic home features 2,197 SF, three bedrooms, two baths, crown molding, a spacious owner's bedroom, and walk-in closets in every room. In addition, the owner has made the landscaping in the large yard one of the nicest in the neighborhood, with a huge fenced backyard that will be great for all your family gatherings. Call David Belden (601.415.3884) or Pete Prisock (601.291.5863) to schedule your viewing today!



DAVID BELDEN, REALTOR®
DBelden@TomSmithLand.com
601.898.2772 office | 601.415.3884 cell



Expect More. Get More.

Call us today!



PETE PRISOCK, ASSOCIATE BROKER
Pete@TomSmithHomes.com
601.898.2772 office | 601.291.5863 cell

TomSmithLandandHomes.com

Information is believed to be accurate but not guaranteed.





Expect More. Get More.

Call us today!

DAVID BELDEN, REALTOR®
 DBelden@TomSmithLand.com
 601.898.2772 office | 601.415.3884 cell

PETE PRISOCK, ASSOCIATE BROKER
 Pete@TomSmithHomes.com
 601.898.2772 office | 601.291.5863 cell

TomSmithLandandHomes.com

Information is believed to be accurate but not guaranteed.





Expect More. Get More.

Call us today!

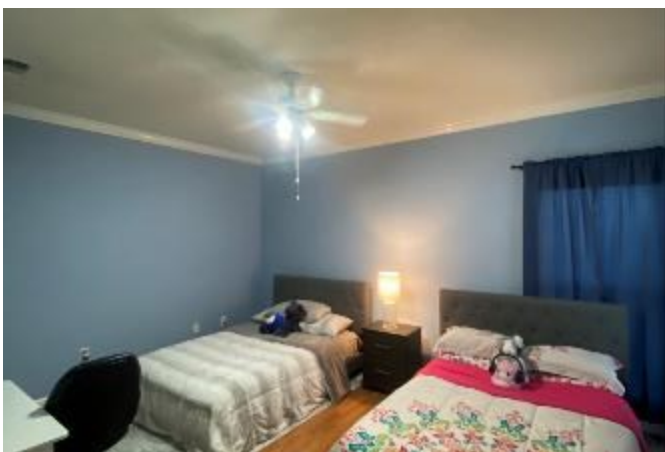
DAVID BELDEN, REALTOR®
 DBelden@TomSmithLand.com
 601.898.2772 office | 601.415.3884 cell

PETE PRISOCK, ASSOCIATE BROKER
 Pete@TomSmithHomes.com
 601.898.2772 office | 601.291.5863 cell

TomSmithLandandHomes.com

Information is believed to be accurate but not guaranteed.





Expect More. Get More.

Call us today!

DAVID BELDEN, REALTOR®
DBelden@TomSmithLand.com
601.898.2772 office | 601.415.3884 cell

PETE PRISOCK, ASSOCIATE BROKER
Pete@TomSmithHomes.com
601.898.2772 office | 601.291.5863 cell

TomSmithLandandHomes.com

Information is believed to be accurate but not guaranteed.





AERIAL MAP

[CLICK HERE FOR AN INTERACTIVE MAP](#)



Expect More. Get More.

Call us today!

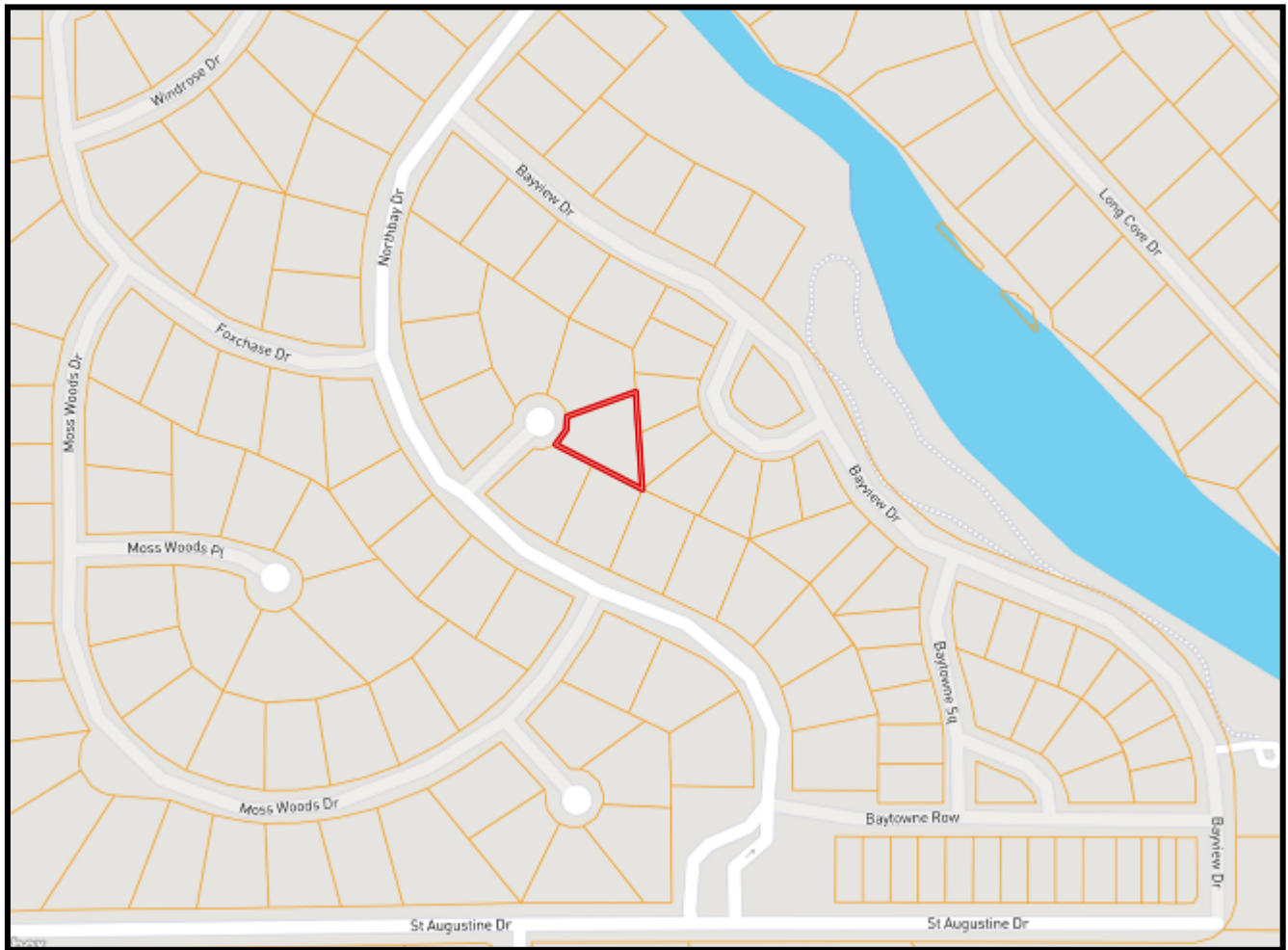
DAVID BELDEN, REALTOR®
DBelden@TomSmithLand.com
601.898.2772 office | 601.415.3884 cell

PETE PRISOCK, ASSOCIATE BROKER
Pete@TomSmithHomes.com
601.898.2772 office | 601.291.5863 cell

TomSmithLandandHomes.com

Information is believed to be accurate but not guaranteed.





OWNERSHIP MAP



Expect More. Get More.

Call us today!

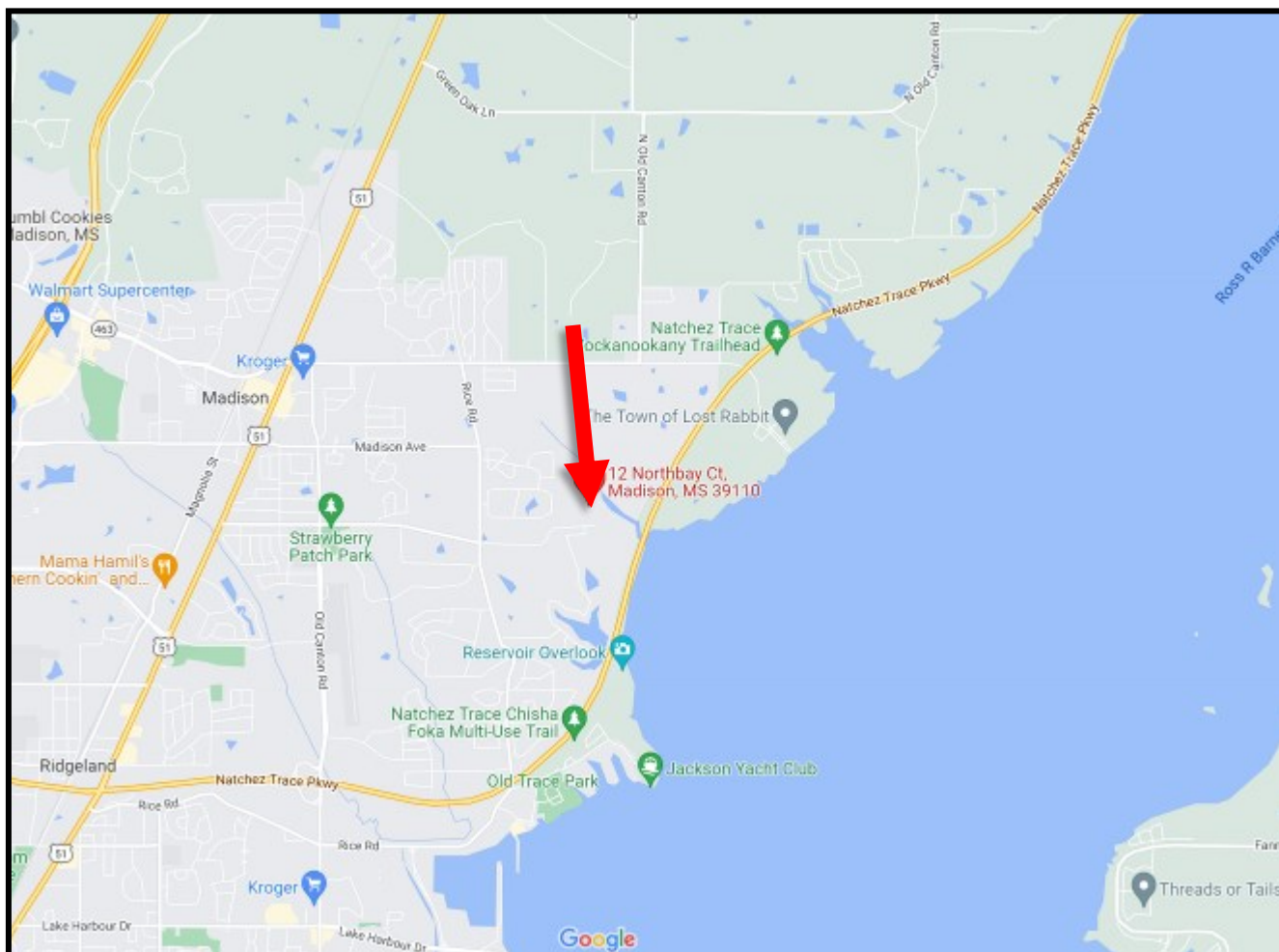
DAVID BELDEN, REALTOR®
 DBelden@TomSmithLand.com
 601.898.2772 office | 601.415.3884 cell

PETE PRISOCK, ASSOCIATE BROKER
 Pete@TomSmithHomes.com
 601.898.2772 office | 601.291.5863 cell

TomSmithLandandHomes.com

Information is believed to be accurate but not guaranteed.





DIRECTIONAL MAP

DIRECTIONS FROM THE INTERSECTION OF HWY 51 AND ST. AUGUSTINE DRIVE

IN MADISON, MS: Travel St. Augustine Drive for 2.7 miles until you reach the gate to Northbay Subdivision. Turn left at the gate onto Northbay Drive. Travel 1 mile and turn right onto Northbay Court. The home will be directly in front of you.

CLICK FOR DIRECTIONS: 12 NORTHBAY COURT MADISON, MS 39110



DAVID BELDEN, REALTOR®
 DBelden@TomSmithLand.com
 601.898.2772 office | 601.415.3884 cell



Expect More. Get More.

Call us today!



PETE PRISOCK, ASSOCIATE BROKER
 Pete@TomSmithHomes.com
 601.898.2772 office | 601.291.5863 cell

TomSmithLandandHomes.com

Information is believed to be accurate but not guaranteed.

