

Home on 4+/- Acres

Lauderdale County, Meridian, MS



With a little TLC, this three-bedroom, one-bath home in Lauderdale County, MS, could be exactly what you are looking for. Located in the West Lauderdale School District, this cozy 1,400 sq. ft. home sits quietly on 4+/- acres. If additional space is needed, the property already has everything in place for a mobile home; the mobile home is no longer there but is ready for a new one with water and septic already in place. Don't wait.

Whether you're looking for something to call your own or an investment property, you will want to check this out. Call Travis Smith today for your private viewing!

DIRECTIONS FROM I-20 East Bound in Meridian, MS: Take exit 150 toward MS-19 N/Philadelphia travel for 0.4 miles then turn left onto US-11 S and travel for 0.1 miles then continue onto MS-19 N for 5.4 miles then make a U-turn at Otis Seal Dr the property will be on the right in 0.3 miles.

Address: 4721 Hwy 19 N Meridian MS [GOOGLE MAP LINK](#)



Call me today!

TRAVIS SMITH, REALTOR®
Travis@TomSmithLand.com
601.898.2772 **office** | 601.600.0428 **cell**



Expect More. Get More.

TomSmithLandandHomes.com

Information is believed to be accurate but not guaranteed.



Call me today!



TRAVIS SMITH, REALTOR®
Travis@TomSmithLand.com
601.898.2772 **office** | 601.600.0428 **cell**



Expect More. Get More.

TomSmithLandandHomes.com

Information is believed to be accurate but not guaranteed.

AERIAL MAP



CLICK [HERE](#) FOR AN INTERACTIVE MAP

*Call me
today!*

TRAVIS SMITH, REALTOR®
Travis@TomSmithLand.com
601.898.2772 **office** | 601.600.0428 **cell**

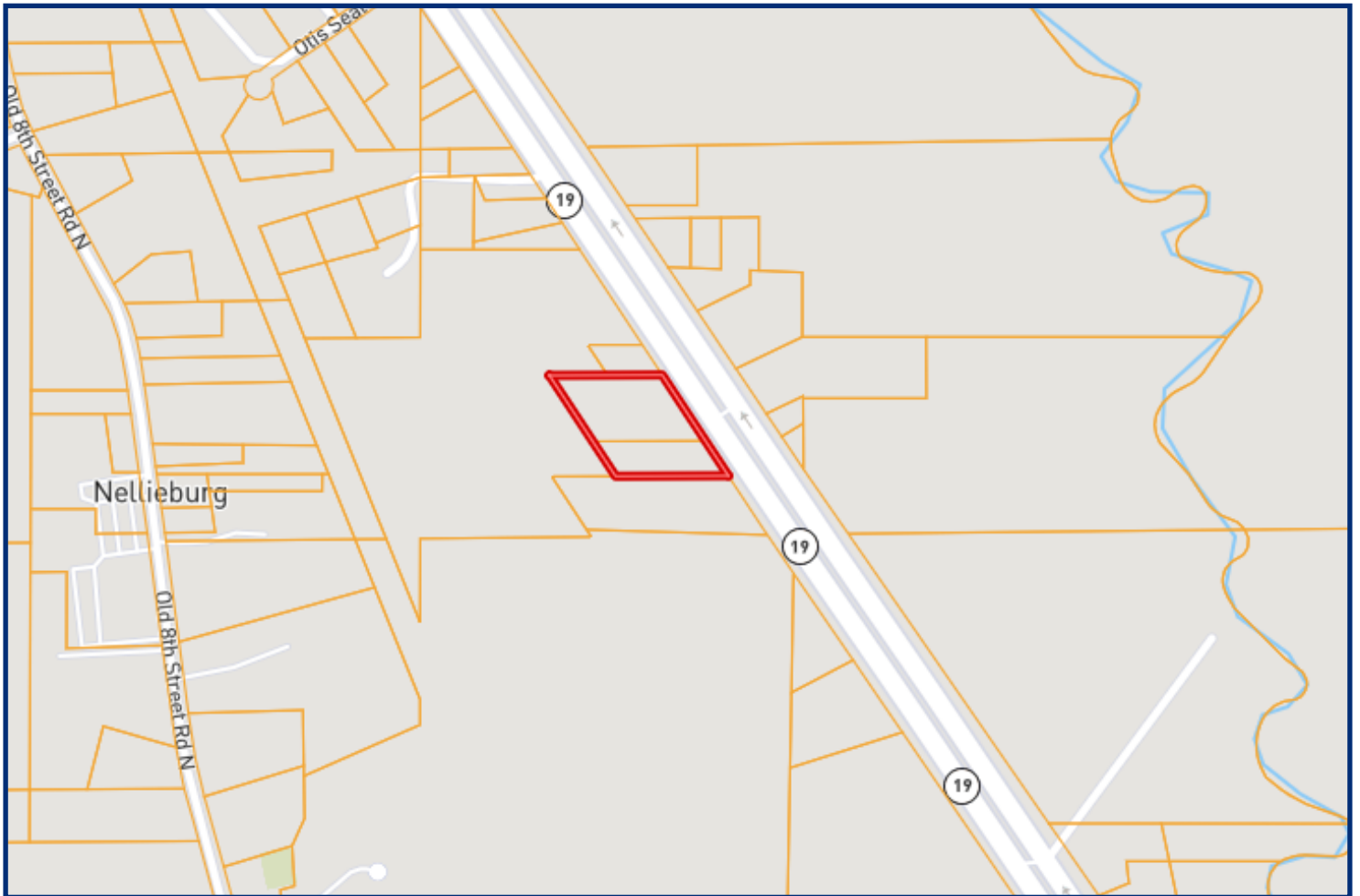


Expect More. Get More.

TomSmithLandandHomes.com

Information is believed to be accurate but not guaranteed.

OWNERSHIP MAP



*Call me
today!*

TRAVIS SMITH, REALTOR®
Travis@TomSmithLand.com
601.898.2772 **office** | 601.600.0428 **cell**

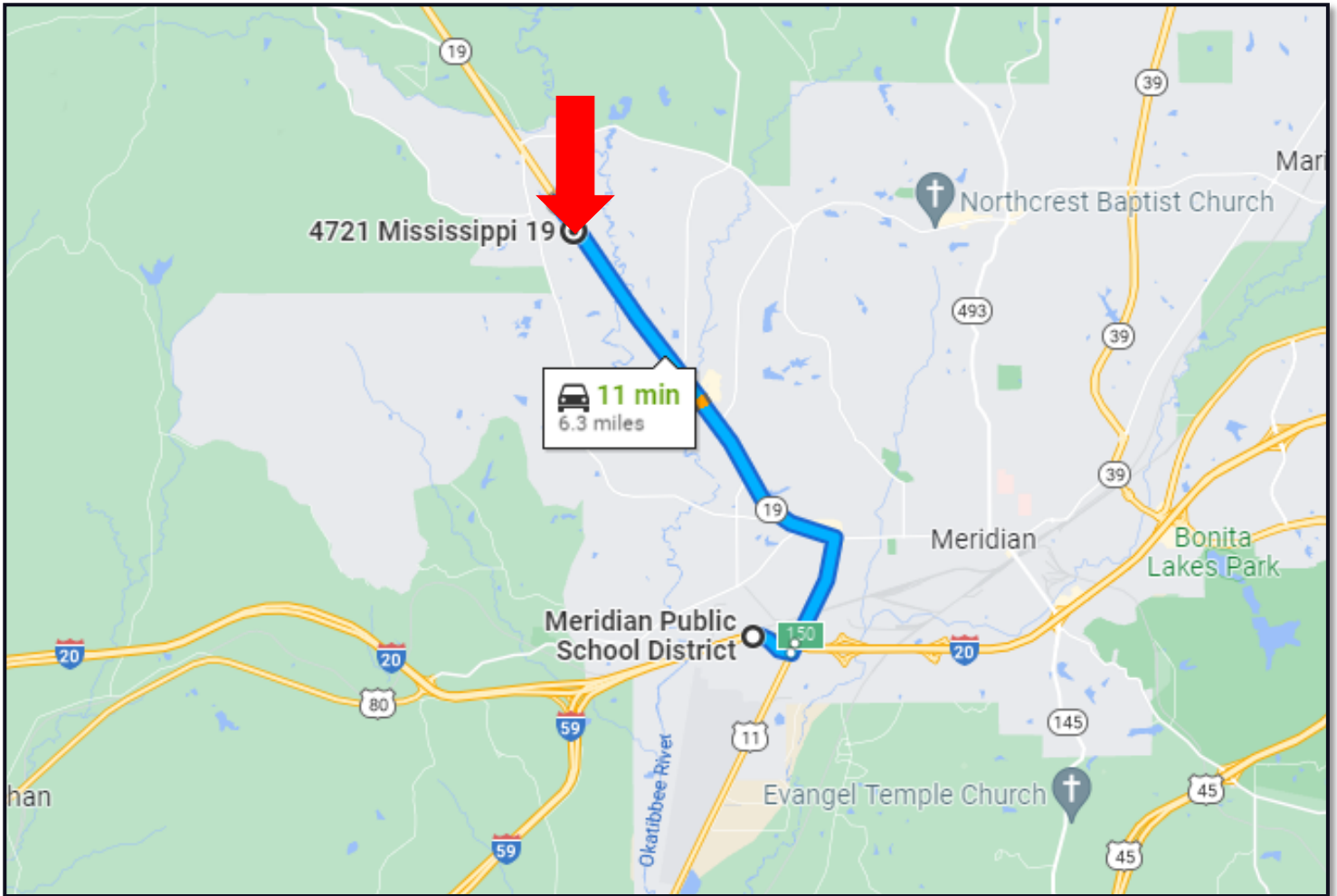


Expect More. Get More.

TomSmithLandandHomes.com

Information is believed to be accurate but not guaranteed.

DIRECTIONAL MAP



DIRECTIONS FROM I-20 East Bound in Meridian, MS: Take exit 150 toward MS-19 N/ Philadelphia travel for 0.4 miles then turn left onto US-11 S and travel for 0.1 miles then continue onto MS-19 N for 5.4 miles then make a U-turn at Otis Seal Dr the property will be on the right in 0.3 miles.

ADDRESS: 4721 HWY 19 N MERIDIAN MS [GOOGLE MAP LINK](#)



Call me today!

TRAVIS SMITH, REALTOR®
Travis@TomSmithLand.com
601.898.2772 **office** | 601.600.0428 **cell**



TomSmithLandandHomes.com

Information is believed to be accurate but not guaranteed.