

6.5+/- Acre Mobile Home Park Wayne County, MS



Great investment property in Wayne County already making money. The property brings in approximately \$2,100 a month. There are three single wide mobile homes on the property and one double wide. Two of the three single wide mobile homes and the one double wide are owned and rented and one of the single wide's is renting a spot. The property is 6.5+ acres with plenty of room to add more mobile homes to rent out. There is a nice gravel drive from the front to the back of the property. This is an incredible opportunity to invest.

Call Travis Smith today for your private viewing.

Directions from four way stop of Hwy 184 and Hwy 63 in Waynesboro, MS: Head Southeast on Hwy 63 for 2.4 miles then turn left onto Delta Dr. for 0.7 miles the destination is on the left.

[136 DELTA DR, WAYNESBORO, MS, 39367](#)

Call me today!

TRAVIS SMITH, REALTOR®
Travis@TomSmithLand.com
601.898.2772 **office** | 601.600.0428 **cell**



TomSmithLandandHomes.com

Information is believed to be accurate but not guaranteed.



Call me today!

TRAVIS SMITH, REALTOR®
Travis@TomSmithLand.com
601.898.2772 office | 601.600.0428 cell



Expect More. Get More.

TomSmithLandandHomes.com

Information is believed to be accurate but not guaranteed.

RENTAL HOME 1



- Approximately 1300 Square Feet
- Two bedrooms two baths
- Renter in place< m
- Well kept up

Call me today!

TRAVIS SMITH, REALTOR®
Travis@TomSmithLand.com
601.898.2772 **office** | 601.600.0428 **cell**



Expect More. Get More.

TomSmithLandandHomes.com

Information is believed to be accurate but not guaranteed.

RENTAL HOME 2



- Approximately 1300 Square Feet
- Two bedrooms two baths
- Renter in place
- Rent paying \$550 a month
- Well kept up

Call me today!

TRAVIS SMITH, REALTOR®
Travis@TomSmithLand.com
601.898.2772 **office** | 601.600.0428 **cell**



Expect More. Get More.

TomSmithLandandHomes.com

Information is believed to be accurate but not guaranteed.

RENTAL HOME 3



- Approximately 1600 Square Feet
- Three bedrooms two baths
- Renter in place
- Rent paying \$800 a month
- Well kept up

Call me today!

TRAVIS SMITH, REALTOR®
Travis@TomSmithLand.com
601.898.2772 **office** | 601.600.0428 **cell**



Expect More. Get More.

TomSmithLandandHomes.com

Information is believed to be accurate but not guaranteed.



[CLICK HERE FOR AN INTERACTIVE MAP](#)

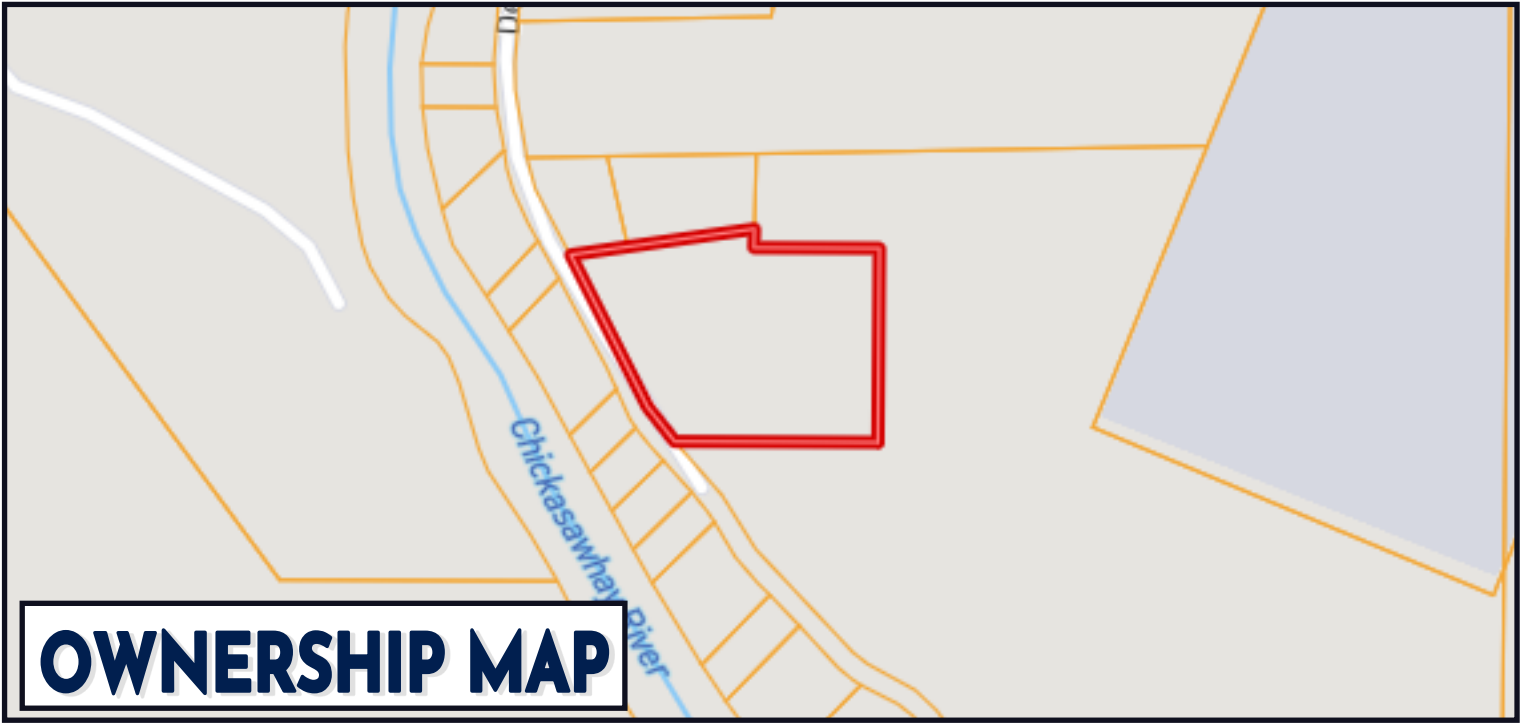
Call me today!

TRAVIS SMITH, REALTOR®
Travis@TomSmithLand.com
601.898.2772 office | 601.600.0428 cell

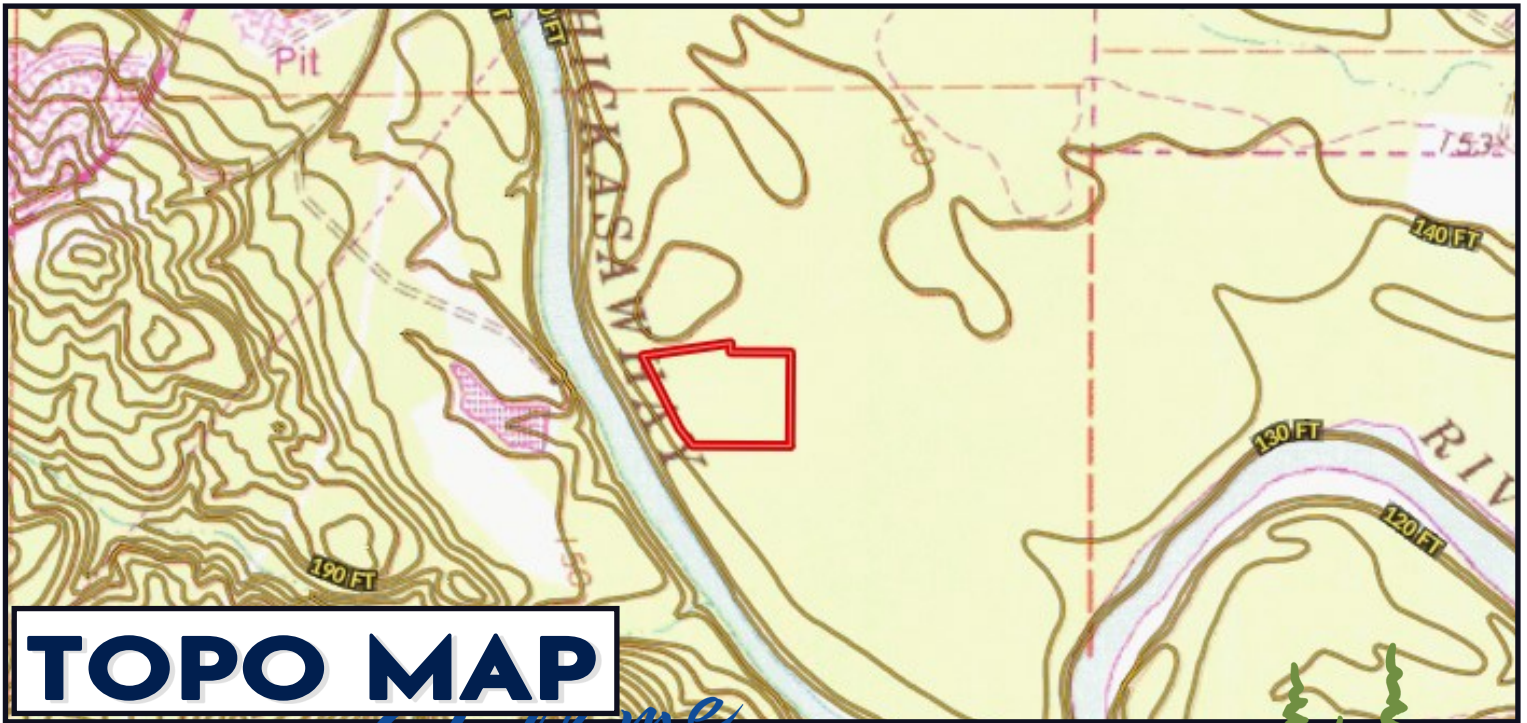


TomSmithLandandHomes.com

Information is believed to be accurate but not guaranteed.



OWNERSHIP MAP



TOPO MAP

Call me today!

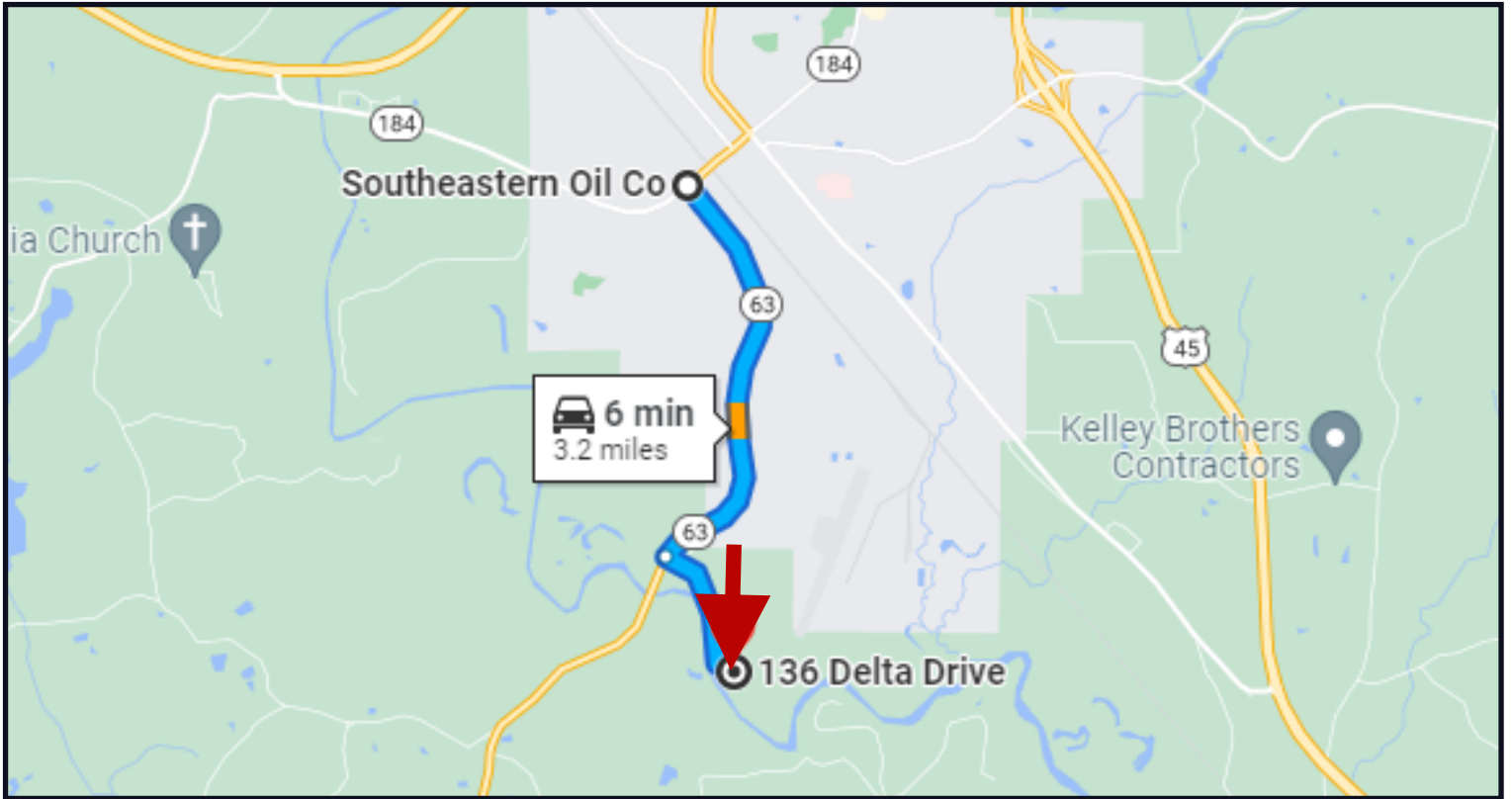
TRAVIS SMITH, REALTOR®
Travis@TomSmithLand.com
601.898.2772 office | 601.600.0428 cell



TomSmithLandandHomes.com

Information is believed to be accurate but not guaranteed.

DIRECTIONAL MAP



Directions from four way stop of Hwy 184 and Hwy 63 in Waynesboro, MS:

Head Southeast on Hwy 63 for 2.4 miles then turn left onto Delta Dr. for 0.7 miles the destination is on the left.

[136 DELTA DR, WAYNESBORO, MS, 39367](#)



Call me today!

TRAVIS SMITH, REALTOR®
Travis@TomSmithLand.com
601.898.2772 office | 601.600.0428 cell



TomSmithLandandHomes.com

Information is believed to be accurate but not guaranteed.