

84+/- Acre Hunting Paradise on Big Black River Attala County, MS



\$220,000

Check out this 84+/- acre hunting paradise on Big Black River in Attala County, MS! This property features 54+/- acres of pasture and 30+/- wooded acres. This agricultural land offers potential income from the farming lease. This property offers great deer and turkey hunting. The river provides water for wildlife as well as recreational opportunities. Utilities are available. This tract has road frontage on I-12 and County Road 4101 in Sallis. Call Danny today to schedule a viewing!



Directions from exit 146 on I-55 North in Madison, MS: Travel 0.3 miles onto MS-14. In 3 miles, turn left onto US-51. Travel 8.1 miles and turn right onto E Mulberry Street. Travel 2.2 miles and turn left on CR 4101. In 0.3 miles, the gate is on the left.

[Click for Google Map](#)



Call me today!

DANNY WILLOUGHBY, REALTOR®
Danny@TomSmithLand.com
601.898.2772 **office** | 601.720.9995 **cell**



TomSmithLandandHomes.com

Information is believed to be accurate but not guaranteed.



Call me today!

DANNY WILLOUGHBY, REALTOR®
Danny@TomSmithLand.com
601.898.2772 office | 601.720.9995 cell



Expect More. Get More.

TomSmithLandandHomes.com

Information is believed to be accurate but not guaranteed.



Call me today!

DANNY WILLOUGHBY, REALTOR®
Danny@TomSmithLand.com
601.898.2772 office | 601.720.9995 cell



Expect More. Get More.

TomSmithLandandHomes.com

Information is believed to be accurate but not guaranteed.

Aerial Map



Flood Map



[Click for Interactive Map](#)



Call me today!

DANNY WILLOUGHBY, REALTOR®
Danny@TomSmithLand.com
601.898.2772 office | 601.720.9995 cell

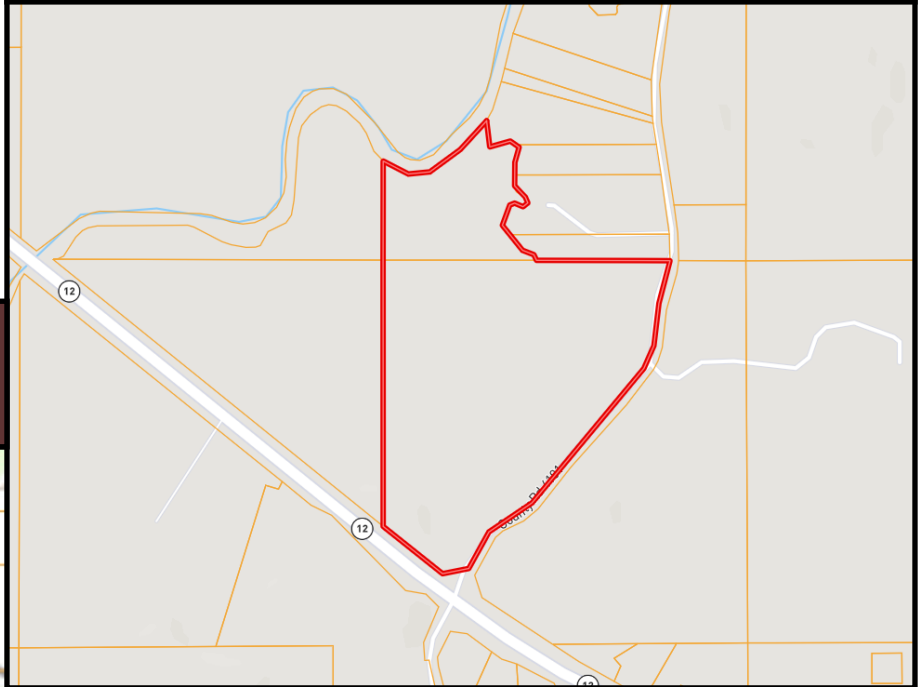


Expect More. Get More.

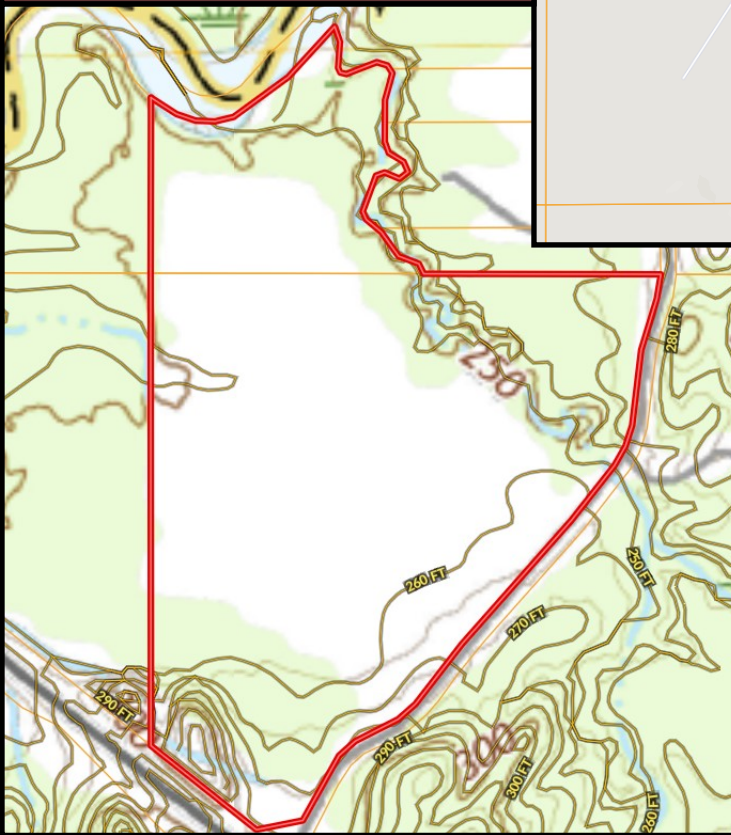
TomSmithLandandHomes.com

Information is believed to be accurate but not guaranteed.

Ownership Map



Topo Map



Call me today!

DANNY WILLOUGHBY, REALTOR®
Danny@TomSmithLand.com
601.898.2772 office | 601.720.9995 cell



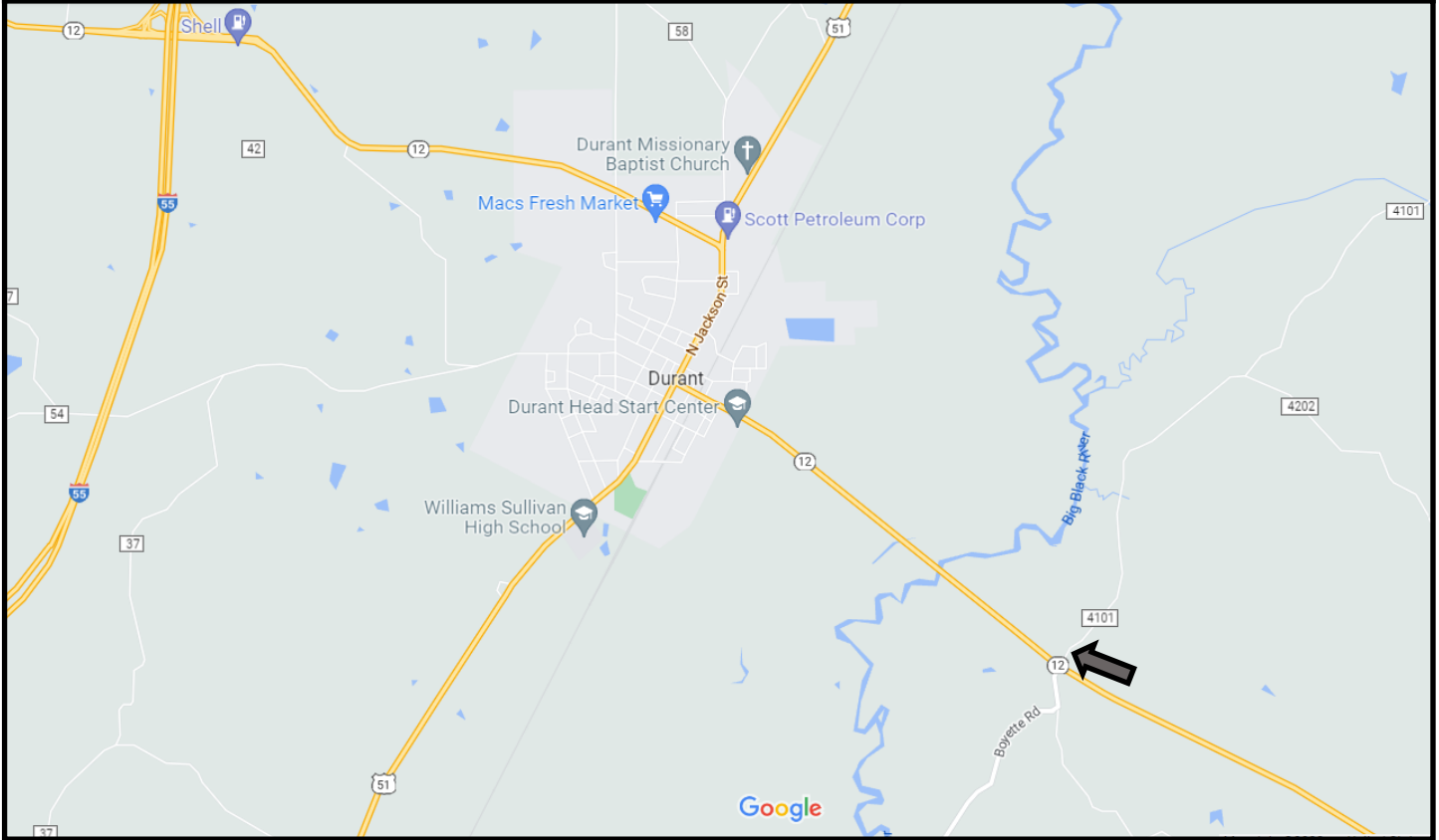
Expect More. Get More.



TomSmithLandandHomes.com

Information is believed to be accurate but not guaranteed

Directional Map



Directions from exit 146 on I-55 North in Madison, MS: Travel 0.3 miles onto MS-14. In 3 miles, turn left onto US-51. Travel 8.1 miles and turn right onto E Mulberry Street. Travel 2.2 miles and turn left on CR 4101. In 0.3 miles, the gate is on the left.

[Click for Google Map](#)



Call me today!

DANNY WILLOUGHBY, REALTOR®
Danny@TomSmithLand.com
601.898.2772 office | 601.720.9995 cell



TomSmithLandandHomes.com

Information is believed to be accurate but not guaranteed.