

17+/- Acre Homesite in Marion County, MS



000 Haddox Road
Columbia, MS 39429

\$60,000

If you are looking for an investment, recreational property, or potential homesite, look no further than this 17+/- acres in the Bunker Hill Community of Marion County, MS. Located just minutes from Columbia, MS. This heavily wooded property provides plenty of upsides. The property is majority planted pine, with some hardwoods interspersed. With multiple home sites to choose from and utilities available at the road, this tract offers multi-use opportunities for buyers with an eye for the future.

From the intersection of MS-35 and US-98 in Columbia, MS: Travel north on MS-35 for 13.5 miles. Turn left onto Polk Road and travel for .1 miles. Turn right onto Bunker Hill Road and travel for 1.5 miles. Turn left onto Horseshoe Road and travel for .3 miles. Turn left onto Haddox road and travel for .5 miles. The property will be on the right.

[Google Maps](#)

Call me today!

CLIF CANNON, REALTOR®
Clif@TomSmithLand.com
601.990.5070 office | 601.565.1070 cell



TomSmithLandandHomes.com

Information is believed to be accurate but not guaranteed.



Call me today!



CLIF CANNON, REALTOR®
Clif@TomSmithLand.com
601.990.5070 office | 601.565.1070 cell



TomSmithLandandHomes.com

Information is believed to be accurate but not guaranteed.



Call me today!

CLIF CANNON, REALTOR®

Clif@TomSmithLand.com

601.990.5070 office | 601.565.1070 cell



Expect More. Get More.



TomSmithLandandHomes.com

Information is believed to be accurate but not guaranteed.

Aerial Map



[Interactive Map](#)

Call me today!

CLIF CANNON, REALTOR®
Clif@TomSmithLand.com
601.990.5070 office | 601.565.1070 cell



TomSmithLandandHomes.com

Information is believed to be accurate but not guaranteed.

Flood Map



Call me today!

CLIF CANNON, REALTOR®
Clif@TomSmithLand.com
601.990.5070 office | 601.565.1070 cell

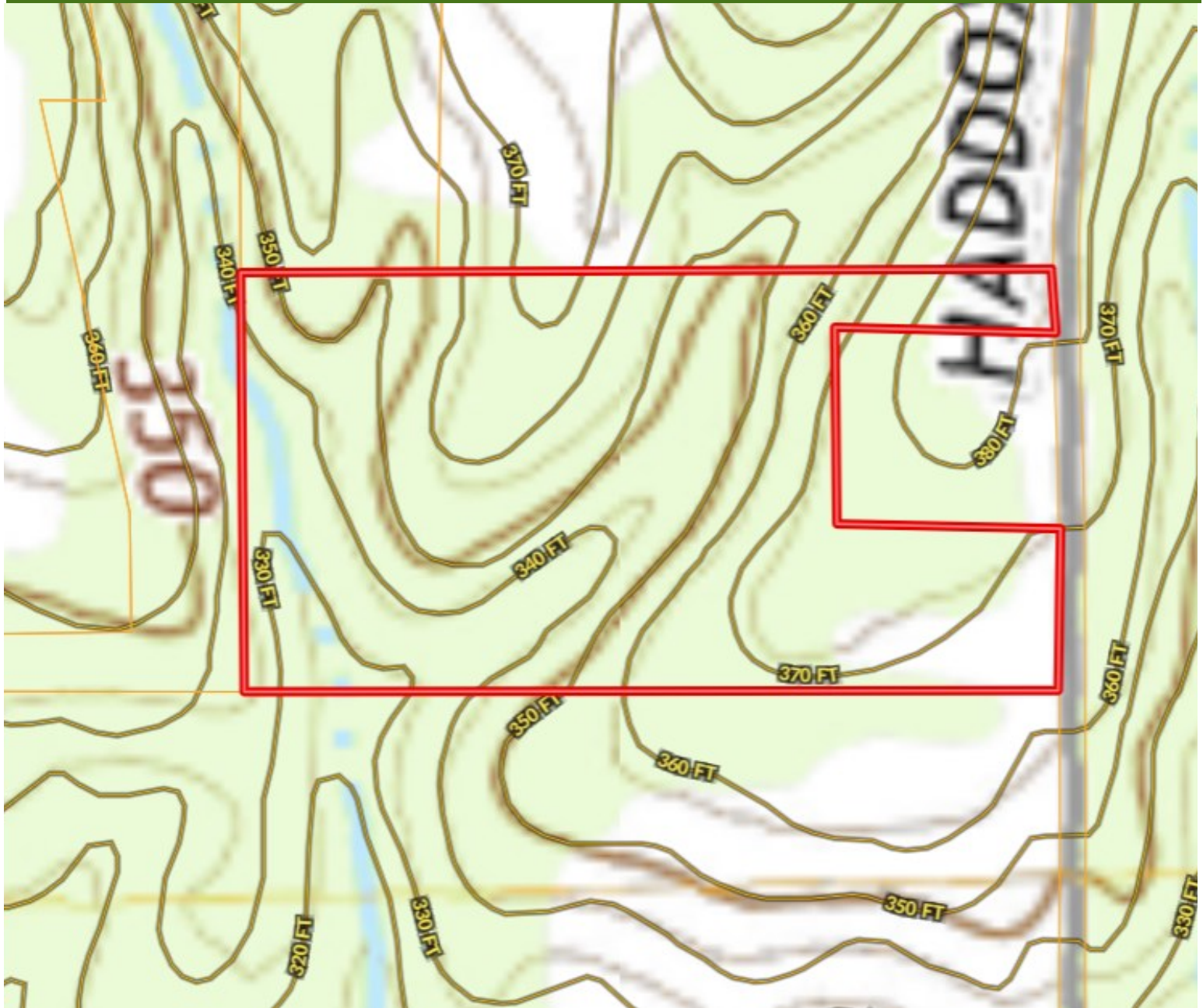


Expect More. Get More.

TomSmithLandandHomes.com

Information is believed to be accurate but not guaranteed.

Topographic Map



Call me today!

CLIF CANNON, REALTOR®
Clif@TomSmithLand.com
601.990.5070 office | 601.565.1070 cell

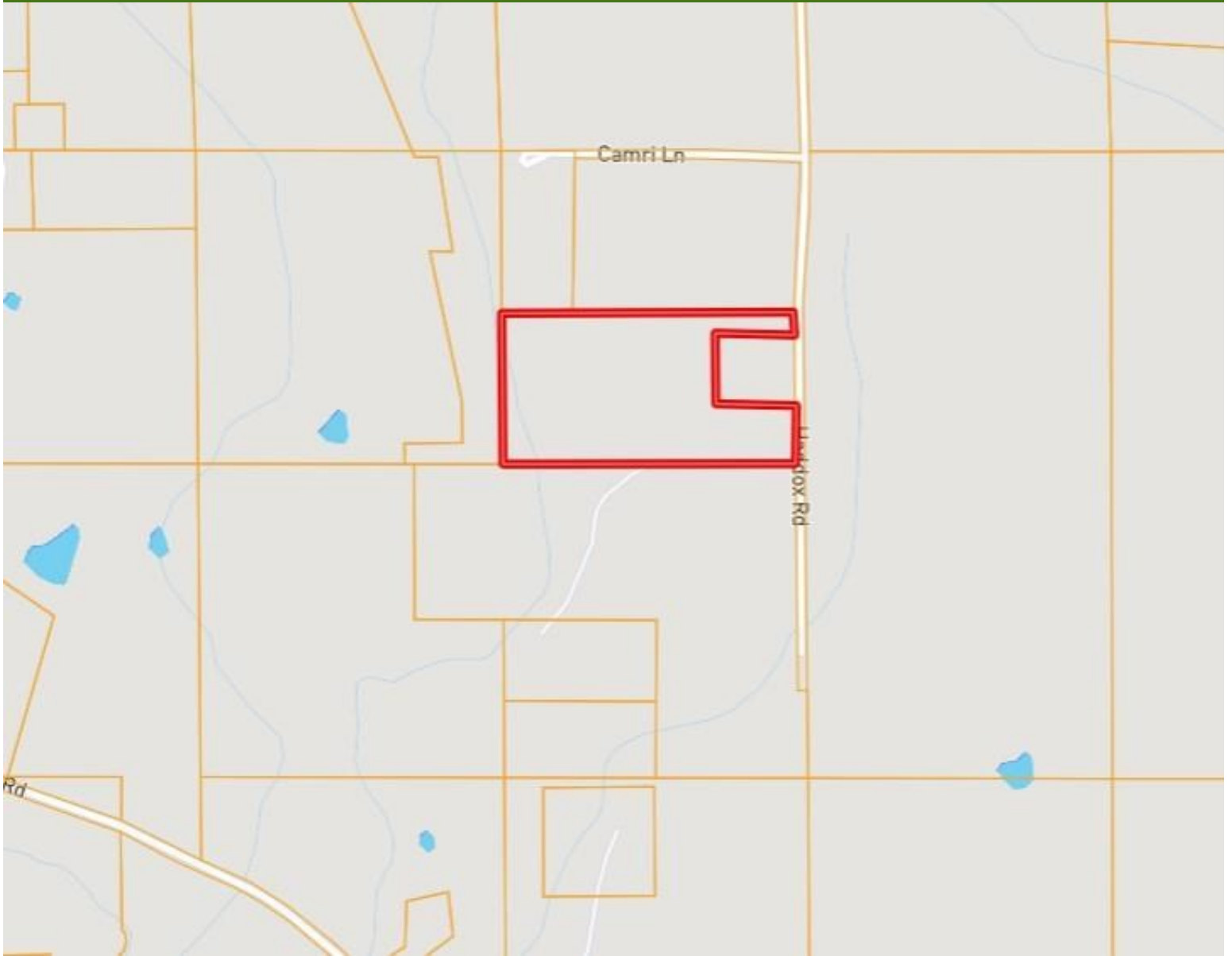


Expect More. Get More.

TomSmithLandandHomes.com

Information is believed to be accurate but not guaranteed.

Ownership Map



Call me today!

CLIF CANNON, REALTOR®
Clif@TomSmithLand.com
601.990.5070 office | 601.565.1070 cell

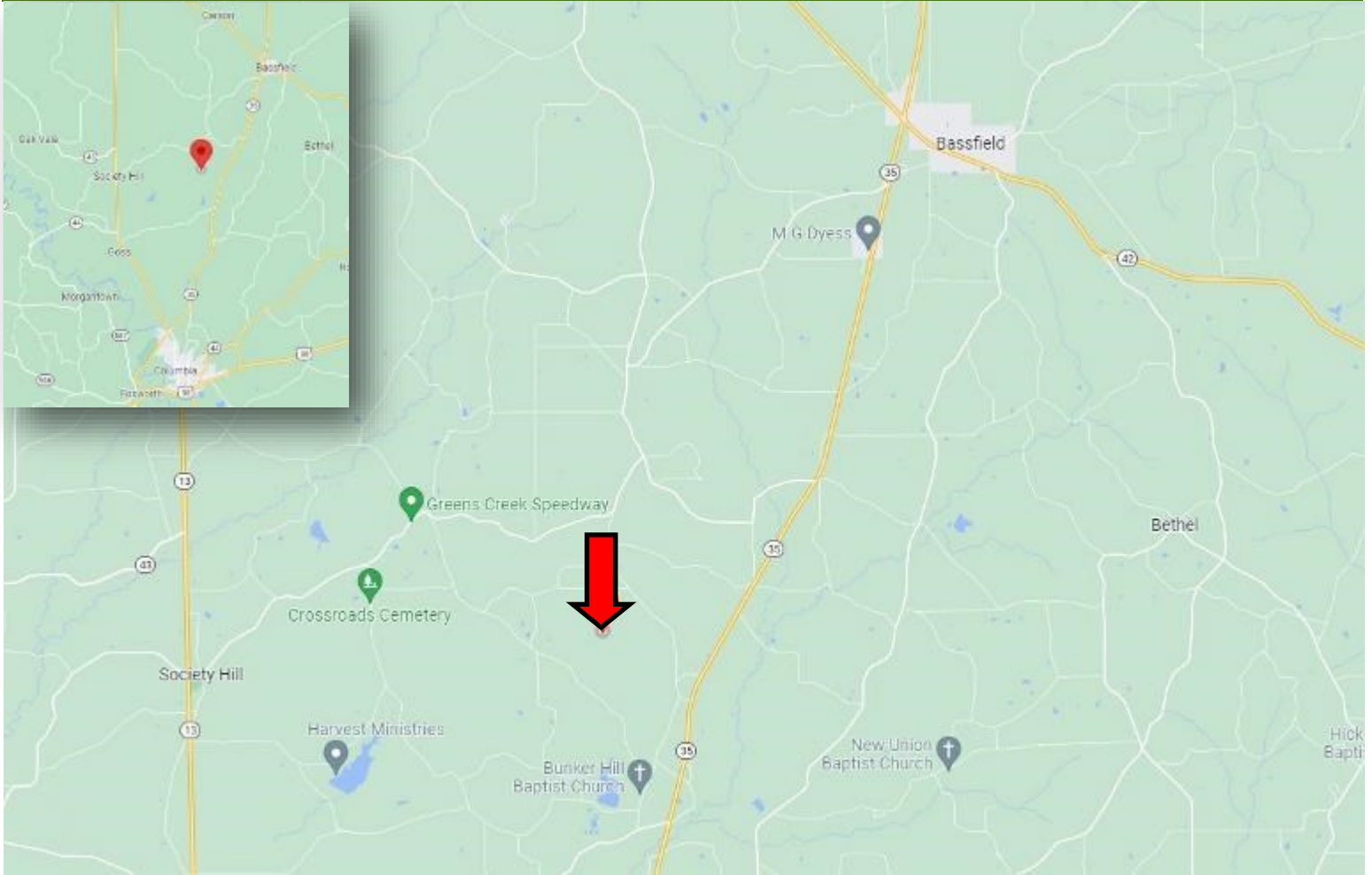


Expect More. Get More.

TomSmithLandandHomes.com

Information is believed to be accurate but not guaranteed.

Directional Map



From the intersection of MS-35 and US-98 in Columbia, MS: Travel north on MS-35 for 13.5 miles. Turn left onto Polk Road and travel for .1 miles. Turn right onto Bunker Hill Road and travel for 1.5 miles. Turn left onto Horseshoe Road and travel for .3 miles. Turn left onto Haddox Road and travel for .5 miles. The property will be on the right.

000 Haddox Road
Columbia, MS 39429

[Google Maps](#)

Call me today!

CLIF CANNON, REALTOR®
Clif@TomSmithLand.com
601.990.5070 **office** | 601.565.1070 **cell**



TomSmithLandandHomes.com

Information is believed to be accurate but not guaranteed.