

GREAT LOCATION FOR A HOME 10+/- ACRES LAUDERDALE COUNTY, MS



This beautiful 10+/- acre tract in Lauderdale County MS, could be just the one for you. This property would make an excellent homesite with plenty of room and privacy. There is a pond in the Northeast portion of the property that offers fishing and even has a few ducks. There are mixed hardwoods and pines throughout the property with deer signs throughout. There are utilities at the road. There are endless opportunities for this tract. Don't wait! Call Travis Smith today for your private viewing!

DIRECTIONS FROM INTERSECTION OF HWY 45 North Bound and HWY 145 in Meridian, MS:
Travel northeast on US-45 toward US-45 for 2.2 miles then turn right onto Mitchum Bottom Rd and travel for 0.7 miles. The property will be on the left.

[GOOGLE MAP LINK](#)



Call me today!

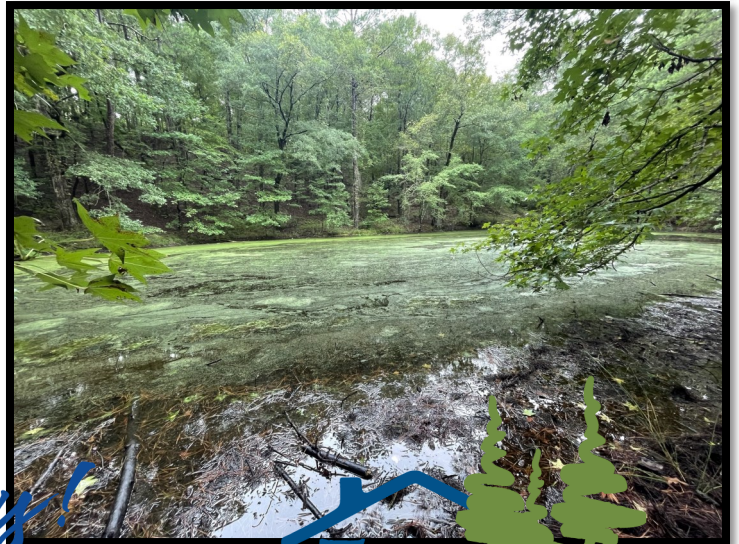
TRAVIS SMITH, REALTOR®
Travis@TomSmithLand.com
601.898.2772 office | 601.600.0428 cell



Expect More. Get More.

TomSmithLandandHomes.com

Information is believed to be accurate but not guaranteed.



Call me today!



TRAVIS SMITH, REALTOR®
Travis@TomSmithLand.com
601.898.2772 office | 601.600.0428 cell



Expect More. Get More.

TomSmithLandandHomes.com

Information is believed to be accurate but not guaranteed.

AERIAL MAP



CLICK [HERE](#) FOR AN INTERACTIVE MAP

Call me today!

TRAVIS SMITH, REALTOR®
Travis@TomSmithLand.com
601.898.2772 **office** | 601.600.0428 **cell**



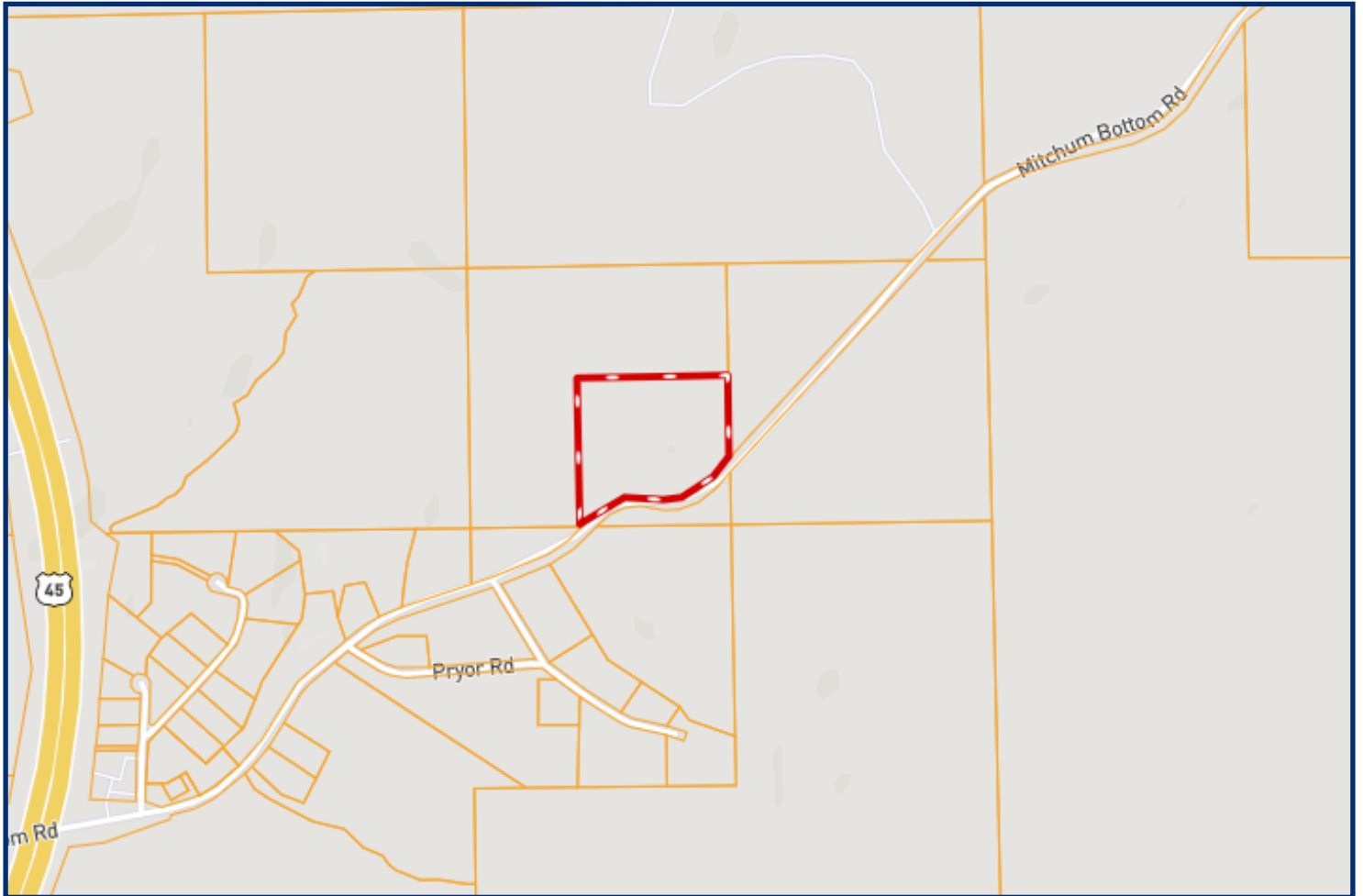
Expect More. Get More.



TomSmithLandandHomes.com

Information is believed to be accurate but not guaranteed.

OWNERSHIP MAP



Call me today!

TRAVIS SMITH, REALTOR®
Travis@TomSmithLand.com
601.898.2772 office | 601.600.0428 cell



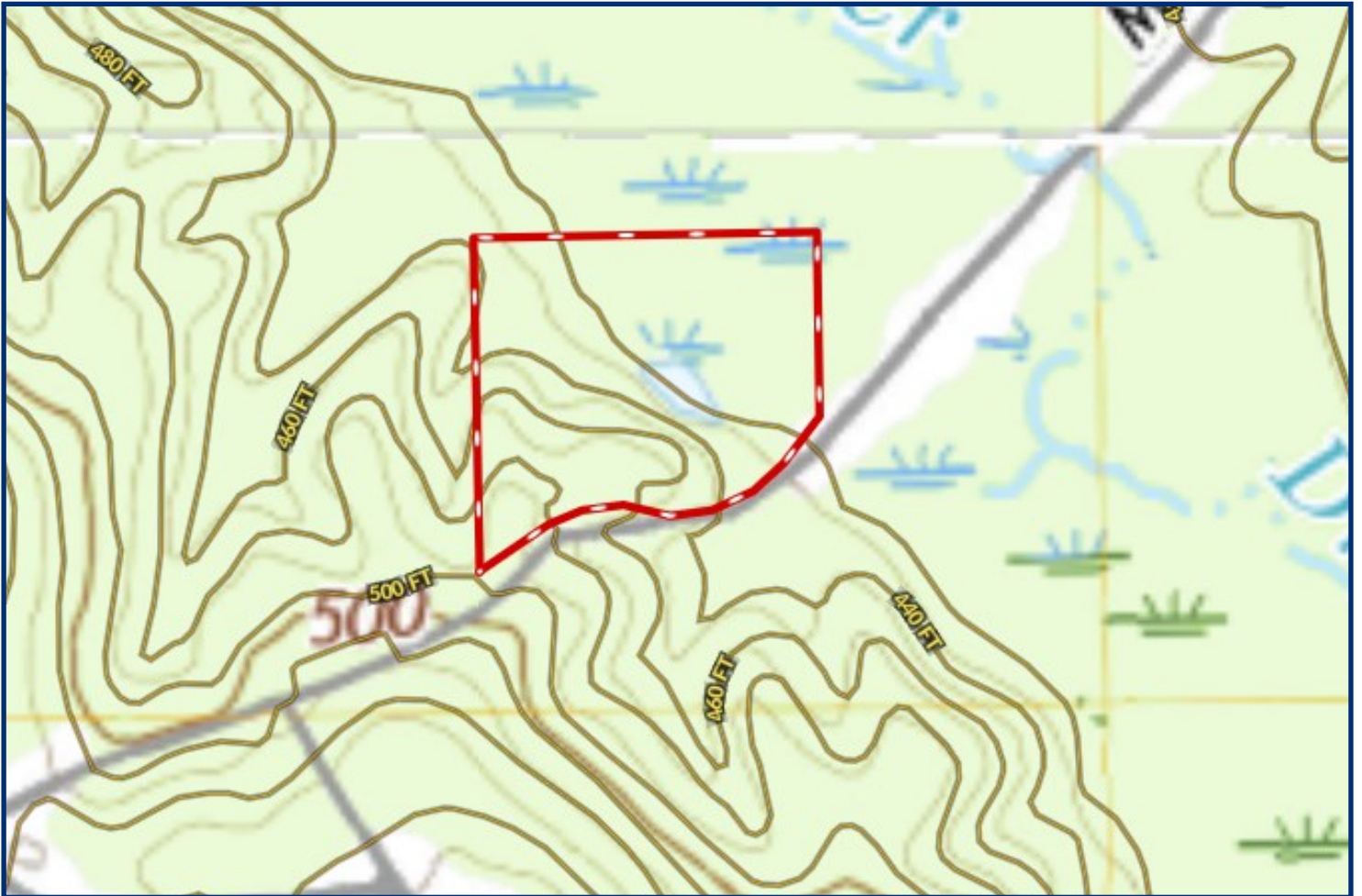
Expect More. Get More.



TomSmithLandandHomes.com

Information is believed to be accurate but not guaranteed.

TOPO MAP



*Call me
today!*

TRAVIS SMITH, REALTOR®
Travis@TomSmithLand.com
601.898.2772 **office** | 601.600.0428 **cell**

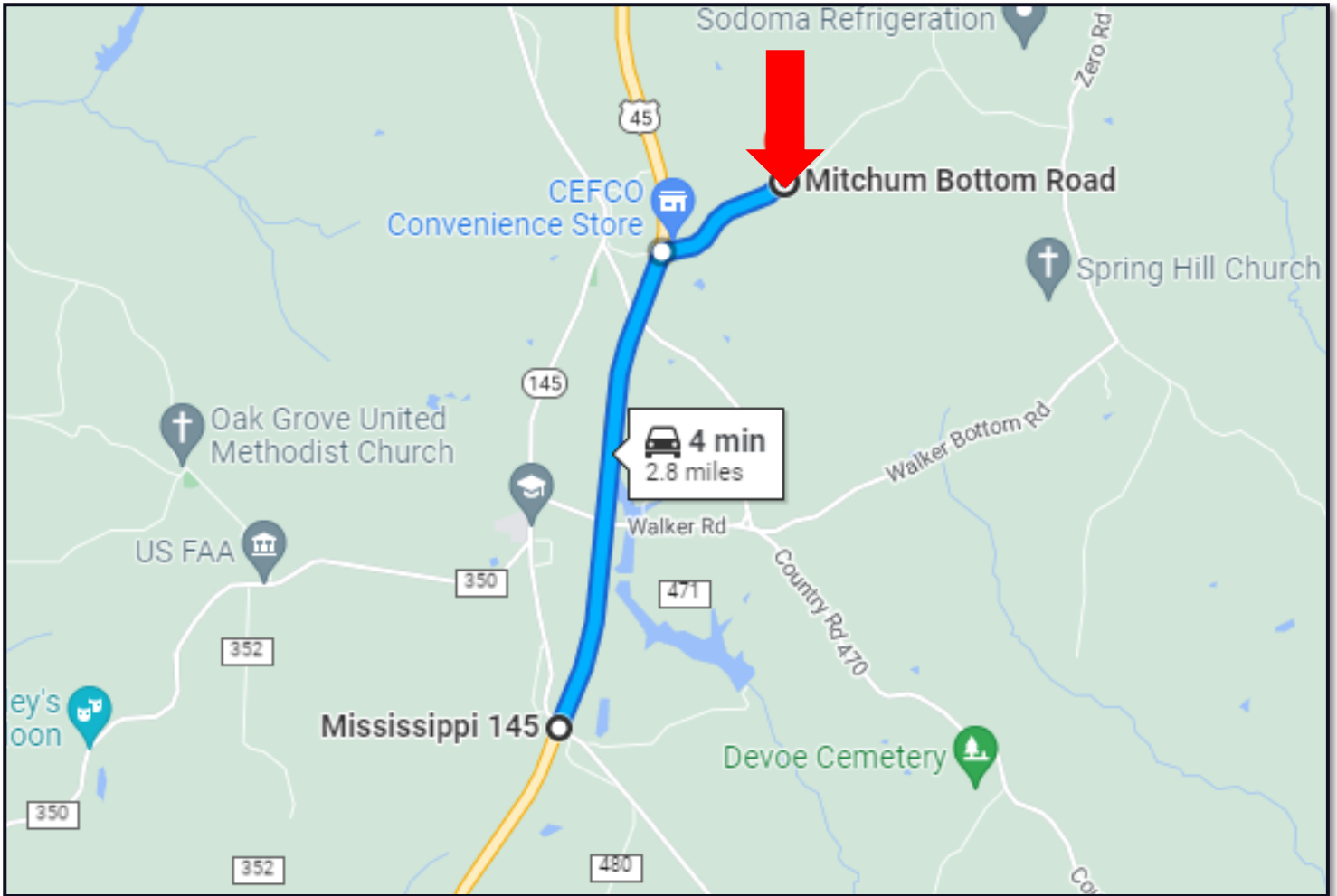


Expect More. Get More.

TomSmithLandandHomes.com

Information is believed to be accurate but not guaranteed.

DIRECTIONAL MAP



DIRECTIONS FROM INTERSECTION OF HWY 45 North Bound and HWY 145 in Meridian, MS:
Travel northeast on US-45 toward US-45 for 2.2 miles then turn right onto Mitchum Bottom Rd and travel for 0.7 miles. The property will be on the left.

GOOGLE MAP LINK



Call me today!

TRAVIS SMITH, REALTOR®

Travis@TomSmithLand.com

601.898.2772 office | 601.600.0428 cell



Expect More. Get More.

TomSmithLandandHomes.com

Information is believed to be accurate but not guaranteed.