

# 237.5± ACRES MADISON, MS RECREATIONAL AND HUNTING TRACT



**\$1,650/ACRE**

LOCATION, LOCATION, LOCATION! This 237.5± acre Madison County tract is conveniently located a few minutes off Hwy 16 in Camden, MS. This tract has been recently harvested for timber and is ready to make your own. A gas line would make the perfect spot to set up a deer stand, and there are several cabin spots to choose from with utilities available at the road. If you have been searching for an affordable tract to create your hunting camp how you want, give Barry a call today!

DIRECTIONS FROM HWY 51 AND HWY 16 IN CANTON, MS: Travel Highway 16 for 13.4 miles. Turn left onto Hwy 17 and travel 1.7 miles. Turn Right onto Pat Cobb Rd., The property will be at the end of the road. [GOOGLE MAP LINK](#)



*Call me today!*

**BARRY HOLT**, REALTOR®  
Barry@TomSmithLand.com  
601.898.2772 **office** | 601.613.2288 **cell**



**TomSmithLandandHomes.com**

Information is believed to be accurate but not guaranteed.





*Call me today!*



**BARRY HOLT**, REALTOR®  
Barry@TomSmithLand.com  
601.898.2772 **office** | 601.613.2288 **cell**



**TomSmithLandandHomes.com**

Information is believed to be accurate but not guaranteed.





*Call me today!*



**BARRY HOLT**, REALTOR®  
Barry@TomSmithLand.com  
601.898.2772 **office** | 601.613.2288 **cell**

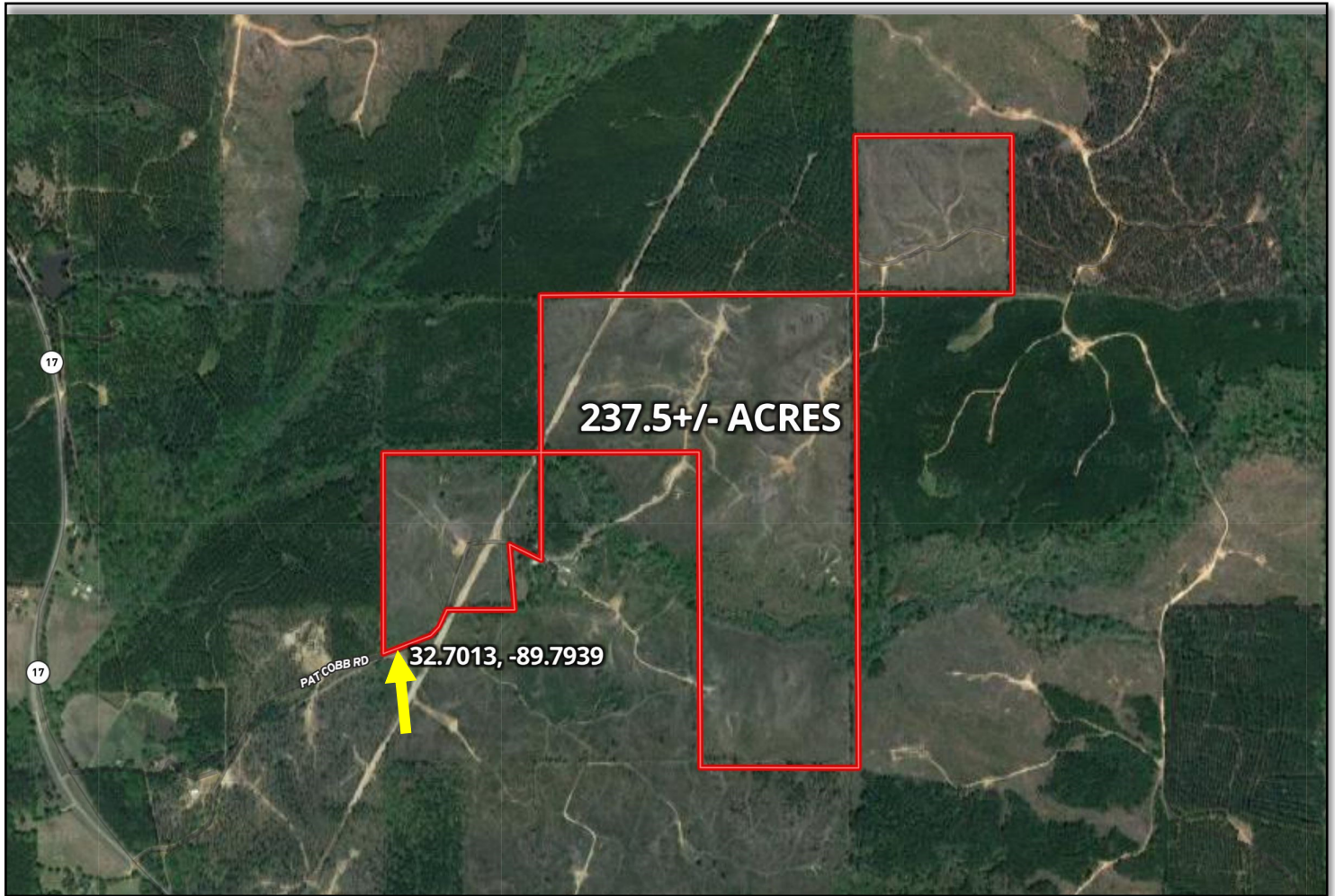


**TomSmithLandandHomes.com**

Information is believed to be accurate but not guaranteed.



# AERIAL MAP



[CLICK HERE FOR AN INTERACTIVE MAP](#)

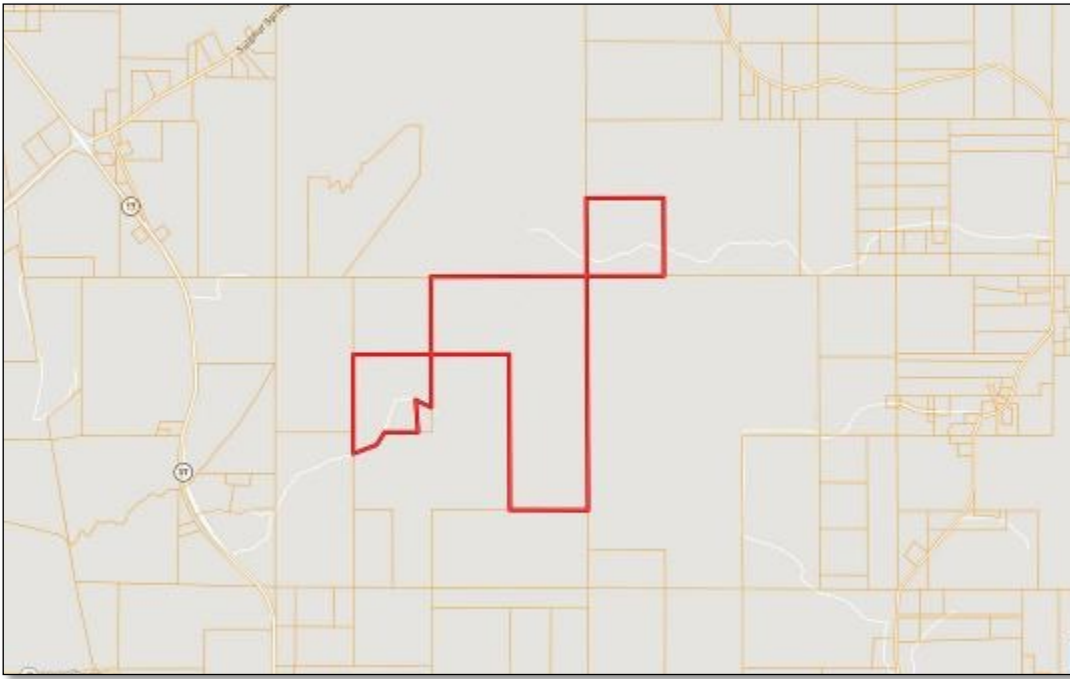
*Call me today!*

**BARRY HOLT**, REALTOR®  
Barry@TomSmithLand.com  
601.898.2772 **office** | 601.613.2288 **cell**

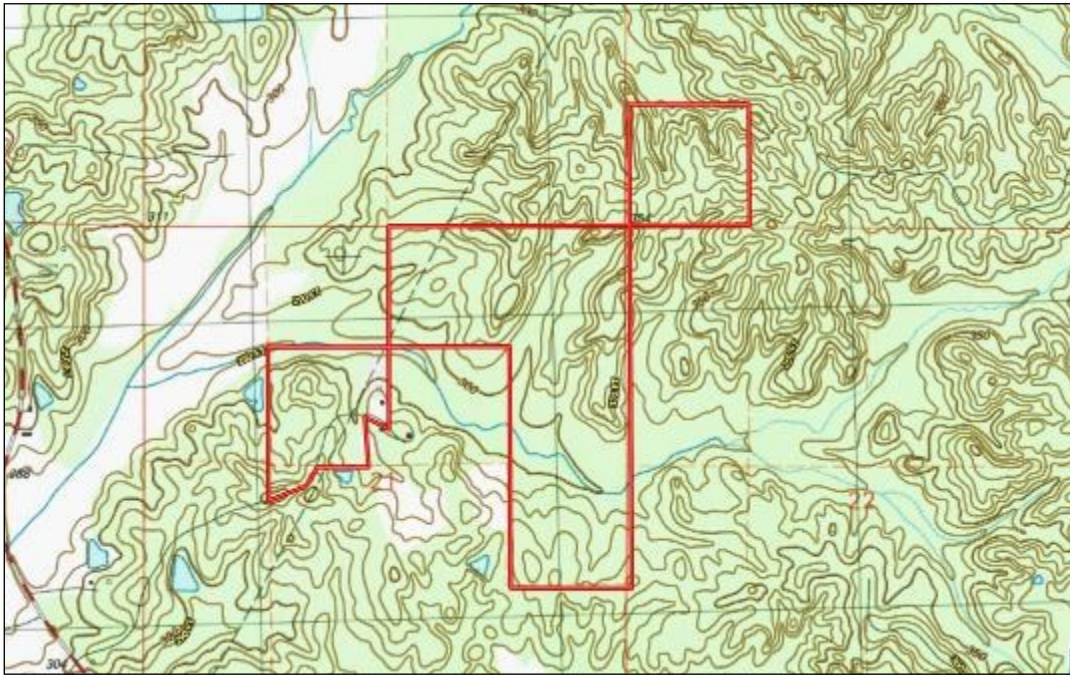


**TomSmithLandandHomes.com**

Information is believed to be accurate but not guaranteed.



# OWNERSHIP MAP



# TOPO MAP

*Call me today!*

**BARRY HOLT**, REALTOR®  
Barry@TomSmithLand.com  
601.898.2772 **office** | 601.613.2288 **cell**

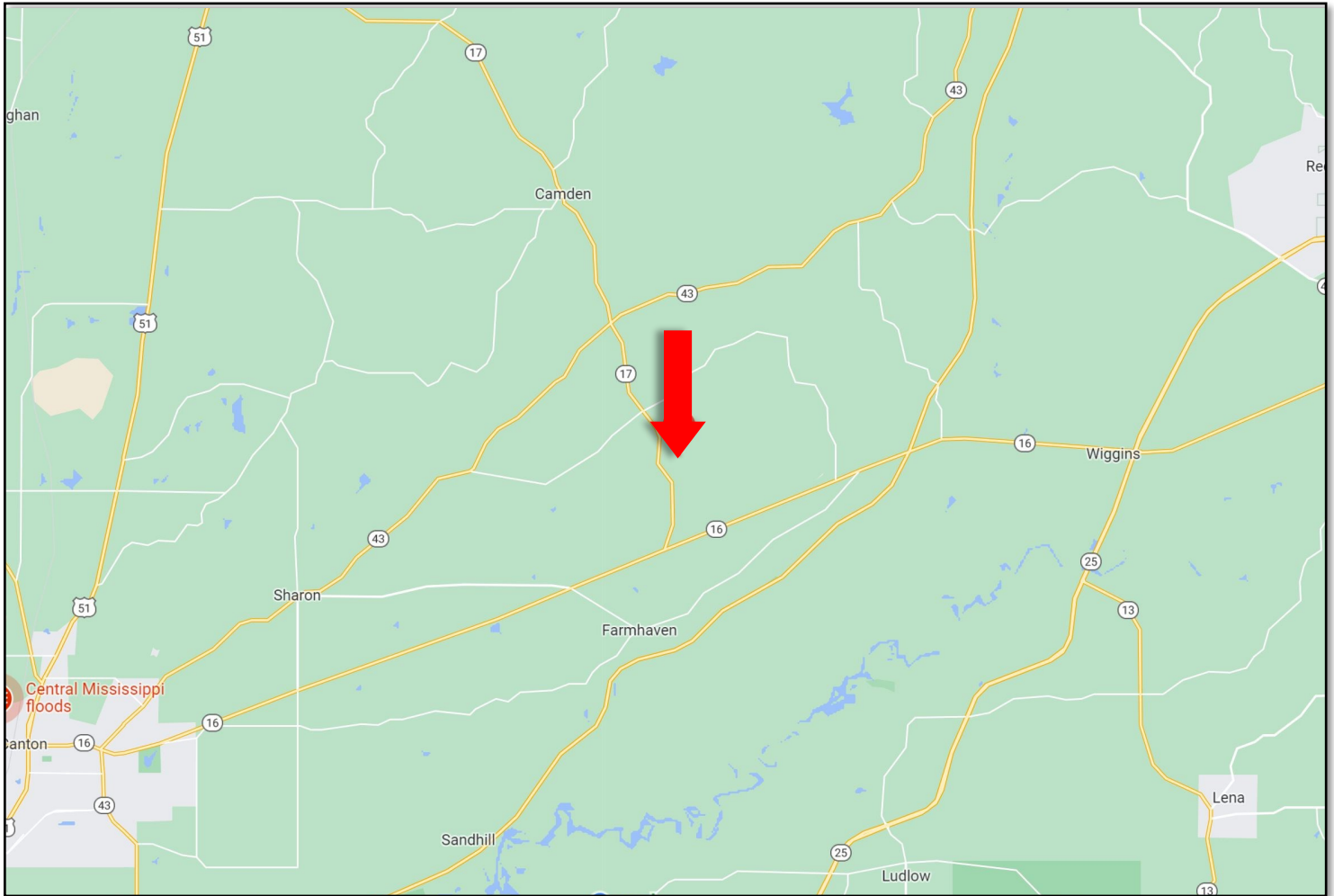


**TomSmithLandandHomes.com**

Information is believed to be accurate but not guaranteed.



# DIRECTIONAL MAP



DIRECTIONS FROM HWY 51 AND HWY 16 IN CANTON, MS: Travel Highway 16 for 13.4 miles. Turn left onto Hwy 17 and travel 1.7 miles. Turn Right onto Pat Cobb Rd., The property will be at the end of the road. [GOOGLE MAP LINK](#)



*Call me today!*

**BARRY HOLT**, REALTOR®  
Barry@TomSmithLand.com  
601.898.2772 **office** | 601.613.2288 **cell**



**TomSmithLandandHomes.com**

Information is believed to be accurate but not guaranteed.