

Diverse Recreational Property

52± ACRES IN LAUDERDALE COUNTY, MS



\$180,000

Welcome to your new diverse recreational property in Lauderdale County, MS. This 52+/- acre timber tract could be easily turned into a home site with just a little work. A cabin is located in the central part of the property and was built in the late 1800s. It has an excellent stand of mature pine trees and some bottomlands. This tract has an established internal road system and around 600 feet of road frontage on Vimville-Causeyville Road, with utilities available. If you have been searching for a smaller tract with many possibilities, this might be it! Give Brett a call for your private showing!

DIRECTIONS FROM THE INTERSECTION OF I-20 AND HWY 19 IN MERIDIAN, MS: Take exit 156 for Jimmie Rodgers Parkway towards MHP Troop H. Keep right at the fork and merge onto Jimmie Rodgers Parkway and travel 2.1 miles. Turn left on Hwy 19 and travel 6.3 miles. Turn right onto Vimville-Causeyway Road, after 5 miles the property will be on will be on your right.



2011-2022
AMERICA'S
BEST
BROKERAGES

Call me today!

BRETT CARNEY, REALTOR®
Brett@TomSmithLand.com
601.898.2772 **office** | 601.710.9633 **cell**



TomSmithLandandHomes.com

Information is believed to be accurate but not guaranteed.



Call me today!

BRETT CARNEY, REALTOR®

Brett@TomSmithLand.com

601.898.2772 office | 601.710.9633 cell



Expect More. Get More.

TomSmithLandandHomes.com

Information is believed to be accurate but not guaranteed.



Call me today!

BRETT CARNEY, REALTOR®

Brett@TomSmithLand.com

601.898.2772 office | 601.710.9633 cell



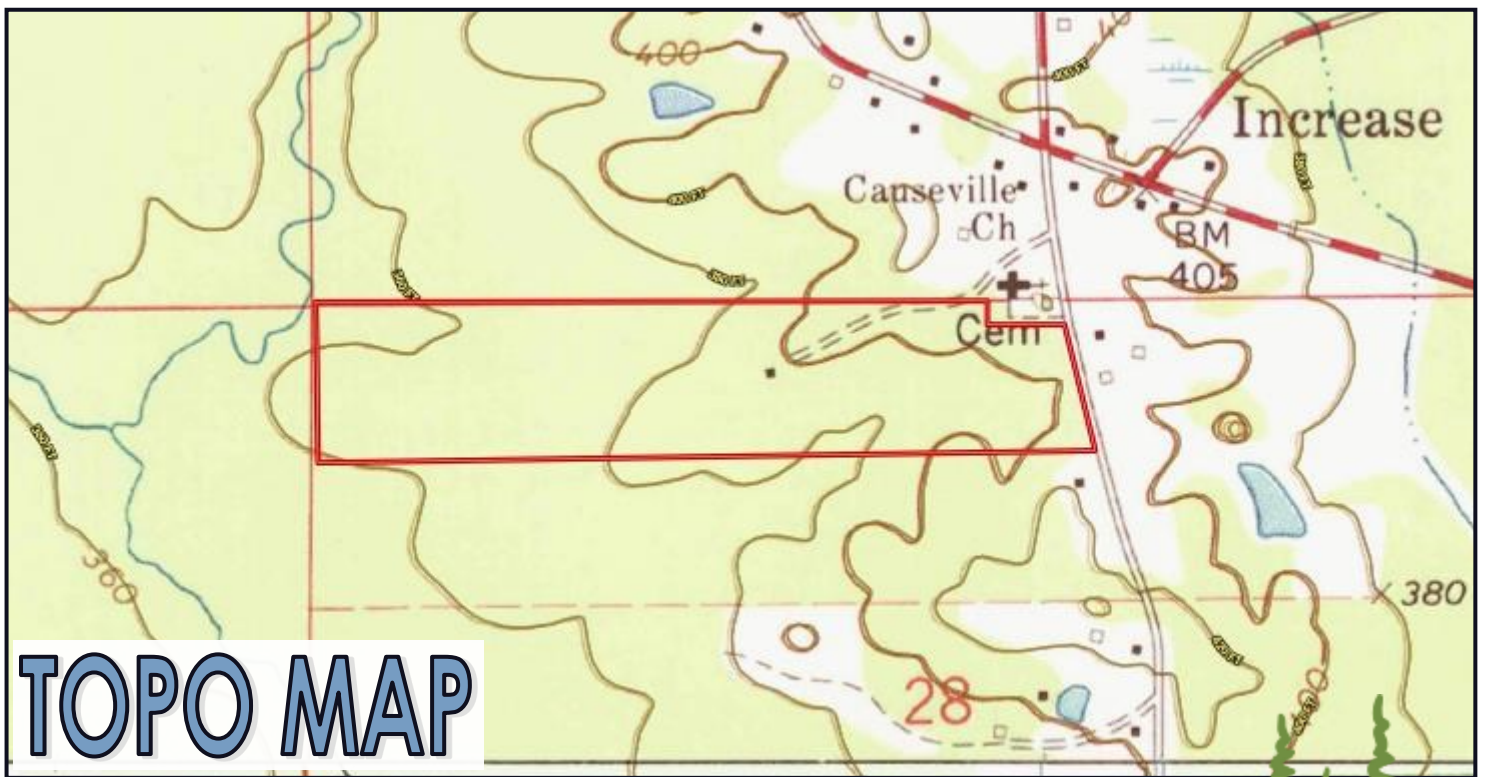
Expect More. Get More.

TomSmithLandandHomes.com

Information is believed to be accurate but not guaranteed.



OWNERSHIP MAP



TOPO MAP

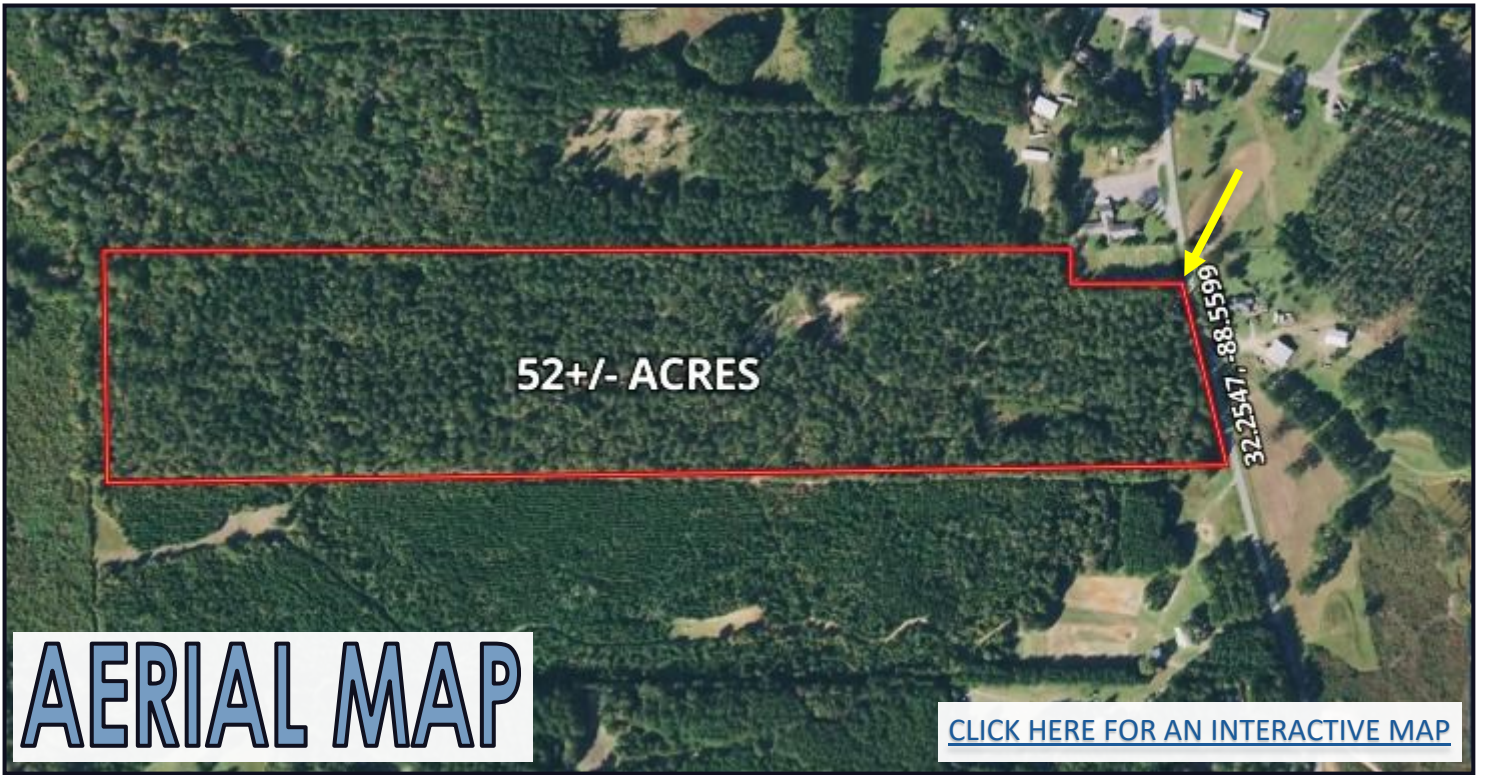
Call me today!

BRETT CARNEY, REALTOR®
Brett@TomSmithLand.com
601.898.2772 office | 601.710.9633 cell



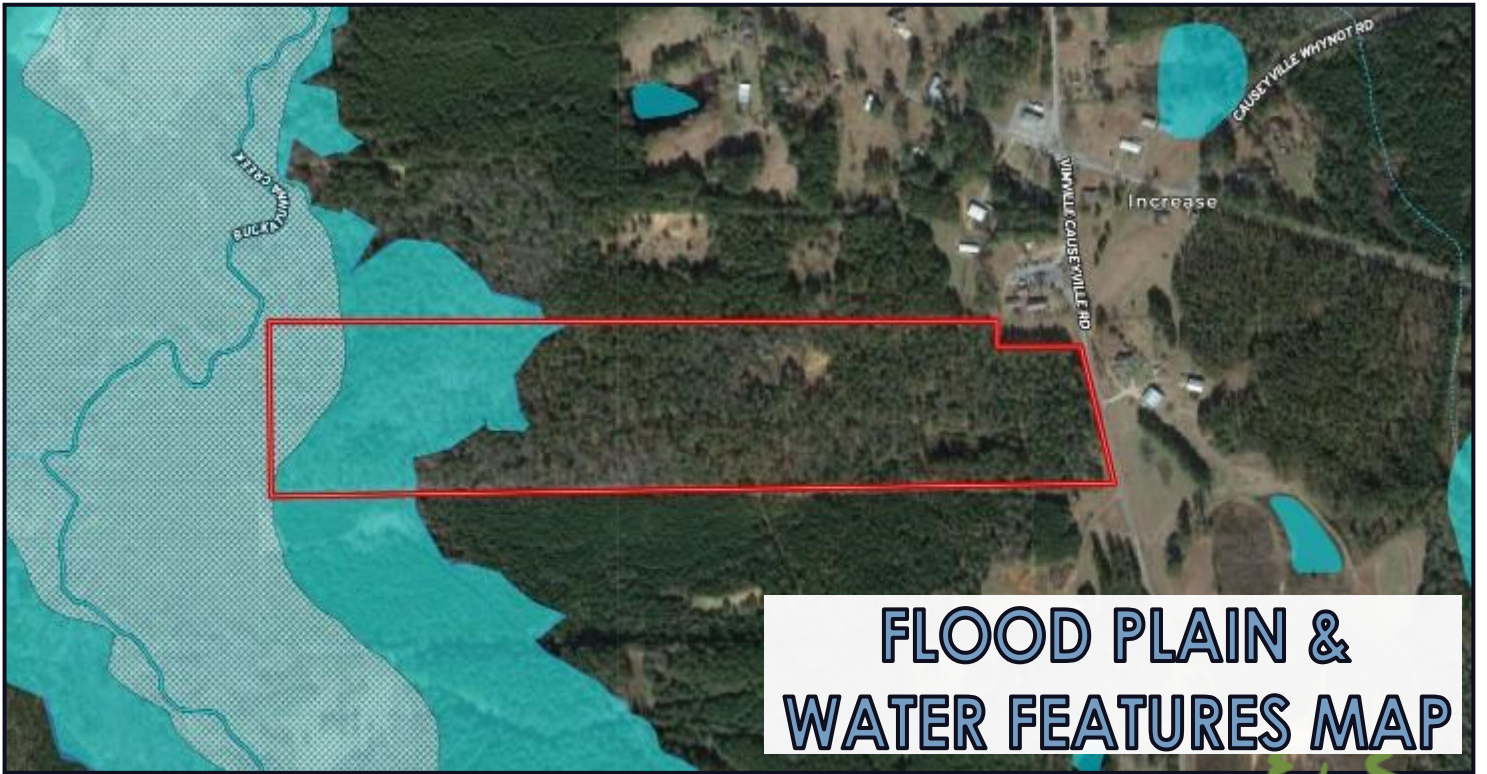
TomSmithLandandHomes.com

Information is believed to be accurate but not guaranteed.



AERIAL MAP

[CLICK HERE FOR AN INTERACTIVE MAP](#)



FLOOD PLAIN & WATER FEATURES MAP

Call me today!

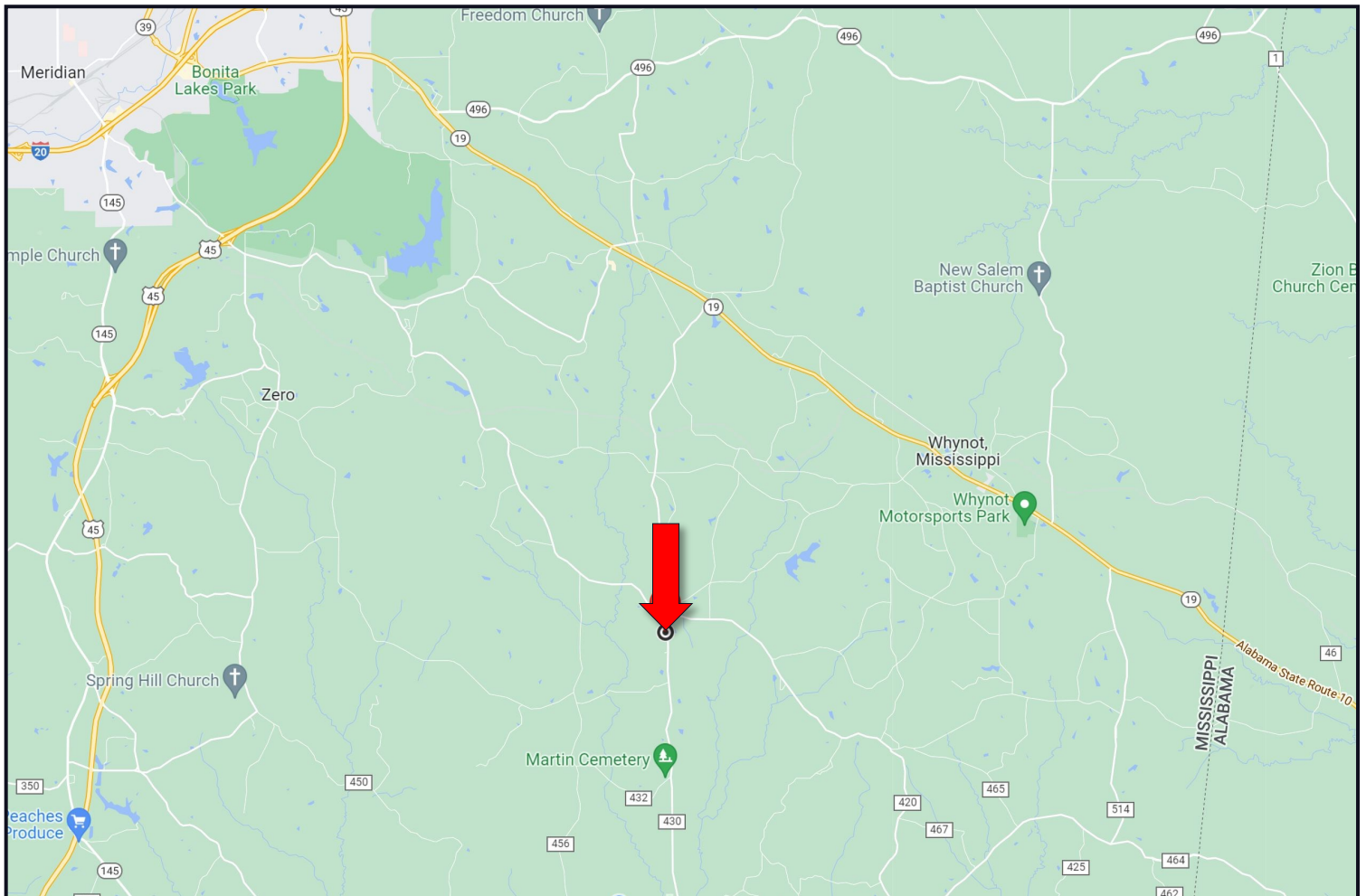
BRETT CARNEY, REALTOR®
Brett@TomSmithLand.com
601.898.2772 office | 601.710.9633 cell



TomSmithLandandHomes.com

Information is believed to be accurate but not guaranteed.

DIRECTIONAL MAP



DIRECTIONS FROM THE INTERSECTION OF I-20 AND HWY 19 IN MERIDIAN, MS: Take exit 156 for Jimmie Rodgers Parkway towards MHP Troop H. Keep right at the fork and merge onto Jimmie Rodgers Parkway and travel 2.1 miles. Turn left on Hwy 19 and travel 6.3 miles. Turn right onto Vimville Causeway Road, after 5 miles the property will be on will be on your right. [GOOGLE MAP LINK](#)



Call me today!

BRETT CARNEY, REALTOR®
Brett@TomSmithLand.com
601.898.2772 **office** | 601.710.9633 **cell**



TomSmithLandandHomes.com

Information is believed to be accurate but not guaranteed.