

# Home on 10.16+/- Acre Oktibbeha County, MS



## \$374,999

Here is a beautiful house sitting on 10.16 +/- acres on the corner of Artesia Road and Turkey Creek Road in Oktibbeha County, MS. This four bedroom / two and half-bathroom house has so much potential. This home would be a great spot to raise a family. There is a screened –in front porch, 2 car garage, and is just over 2500SqFt. This house also has an extra room upstairs that could be easily converted into a game/ guest room and features a 2+/- acre stocked pond where someone could fish every day! This house is also just minutes from Mississippi State University! Call Walker to schedule your private tour!

**Directions from Mississippi State University, Starkville MS:** From campus in .5 miles turn left onto Stone Blvd. Then after .1 miles turn left onto Blackjack Road. At the roundabout take the first exit for Oktoc Road. Then in .6 miles turn left onto Artesia Road. Then after .1 miles turn left onto Turkey Creek Road. The house will be on your left



*Call me today!*

**WALKER TRANUM, REALTOR®**  
Walker@TomSmithHomes.com  
662.268.6333 office | 662.769.1442 cell



## TomSmithLandandHomes.com

Information is believed to be accurate but not guaranteed



*Call me today!*

**WALKER TRANUM**, REALTOR®  
Walker@TomSmithHomes.com  
662.268.6333 office | 662.769.1442 cell



**TomSmithLandandHomes.com**

Information is believed to be accurate but not guaranteed.

LandReport  
2011-2022  
AMERICA'S  
BEST  
BROKERAGES



*Call me today!*

**WALKER TRANUM, REALTOR®**  
Walker@TomSmithHomes.com  
662.268.6333 office | 662.769.1442 cell



**TomSmithLandandHomes.com**

Information is believed to be accurate but not guaranteed.

LandReport  
2011-2022  
AMERICA'S  
BEST  
BROKERAGES



*Call me today!*

**WALKER TRANUM, REALTOR®**  
Walker@TomSmithHomes.com  
662.268.6333 office | 662.769.1442 cell



**TomSmithLandandHomes.com**

Information is believed to be accurate but not guaranteed.

LandReport  
2011-2022  
AMERICA'S  
BEST  
BROKERAGES



LandReport  
2011-2022  
AMERICA'S  
BEST  
BROKERAGES

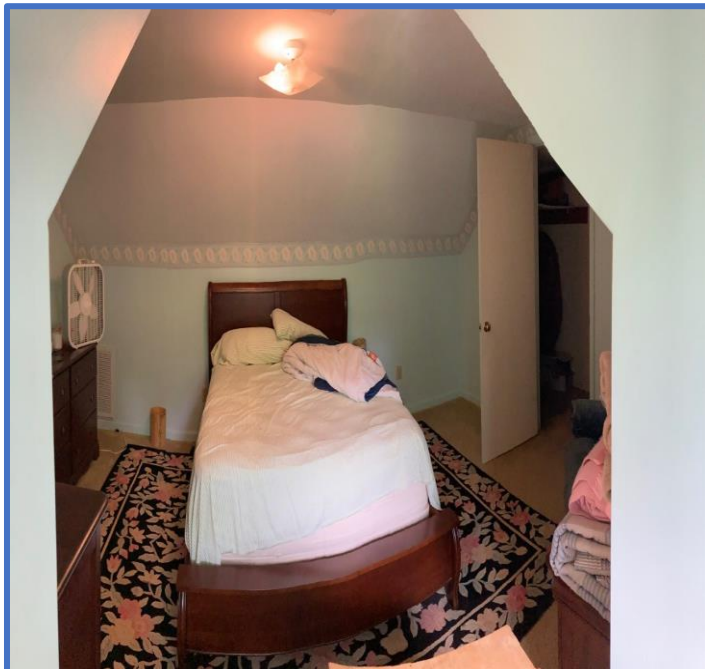
*Call me today!*

**WALKER TRANUM, REALTOR®**  
Walker@TomSmithHomes.com  
662.268.6333 office | 662.769.1442 cell



**TomSmithLandandHomes.com**

Information is believed to be accurate but not guaranteed.



*Call me today!*

**WALKER TRANUM, REALTOR®**  
Walker@TomSmithHomes.com  
662.268.6333 office | 662.769.1442 cell



**TomSmithLandandHomes.com**

Information is believed to be accurate but not guaranteed.

LandReport  
2011-2022  
AMERICA'S  
BEST  
BROKERAGES

# Aerial Map



*Call me today!*

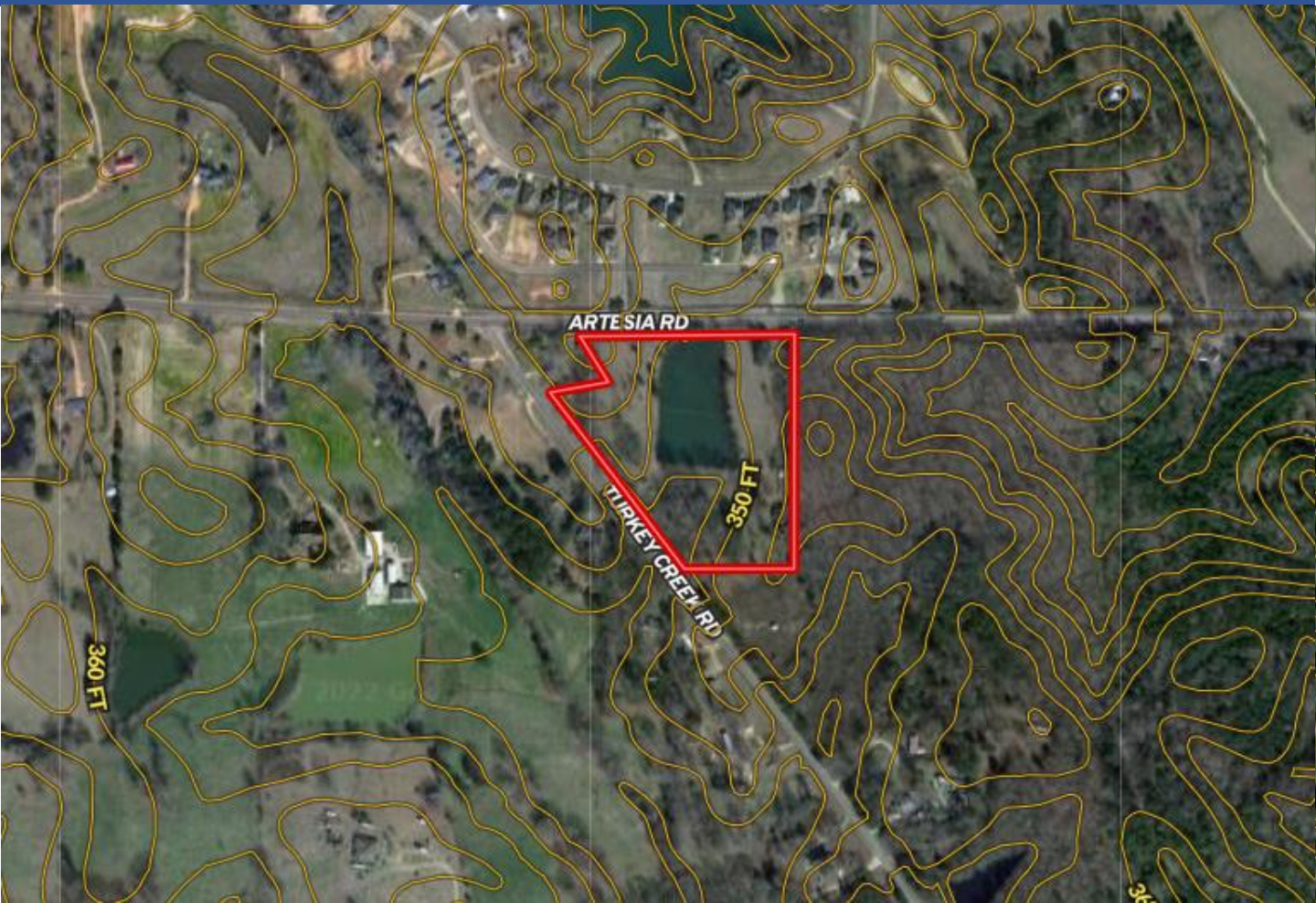
**WALKER TRANUM**, REALTOR®  
Walker@TomSmithHomes.com  
662.268.6333 office | 662.769.1442 cell



**TomSmithLandandHomes.com**

Information is believed to be accurate but not guaranteed.

# Topography Map



*Call me today!*

**WALKER TRANUM**, REALTOR®  
Walker@TomSmithHomes.com  
662.268.6333 office | 662.769.1442 cell

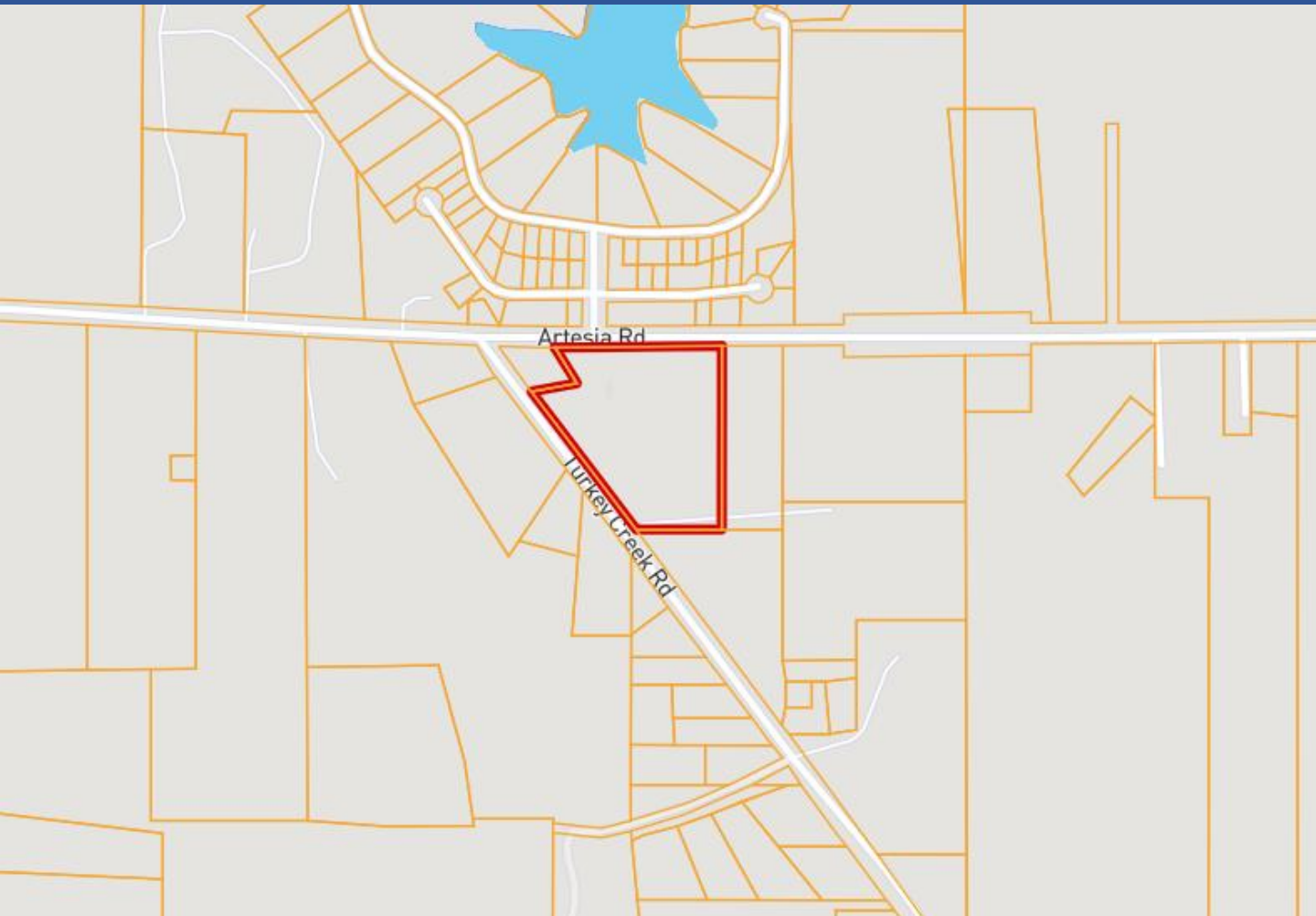


**TomSmithLandandHomes.com**

Information is believed to be accurate but not guaranteed.



# Ownership Map



*Call me today!*

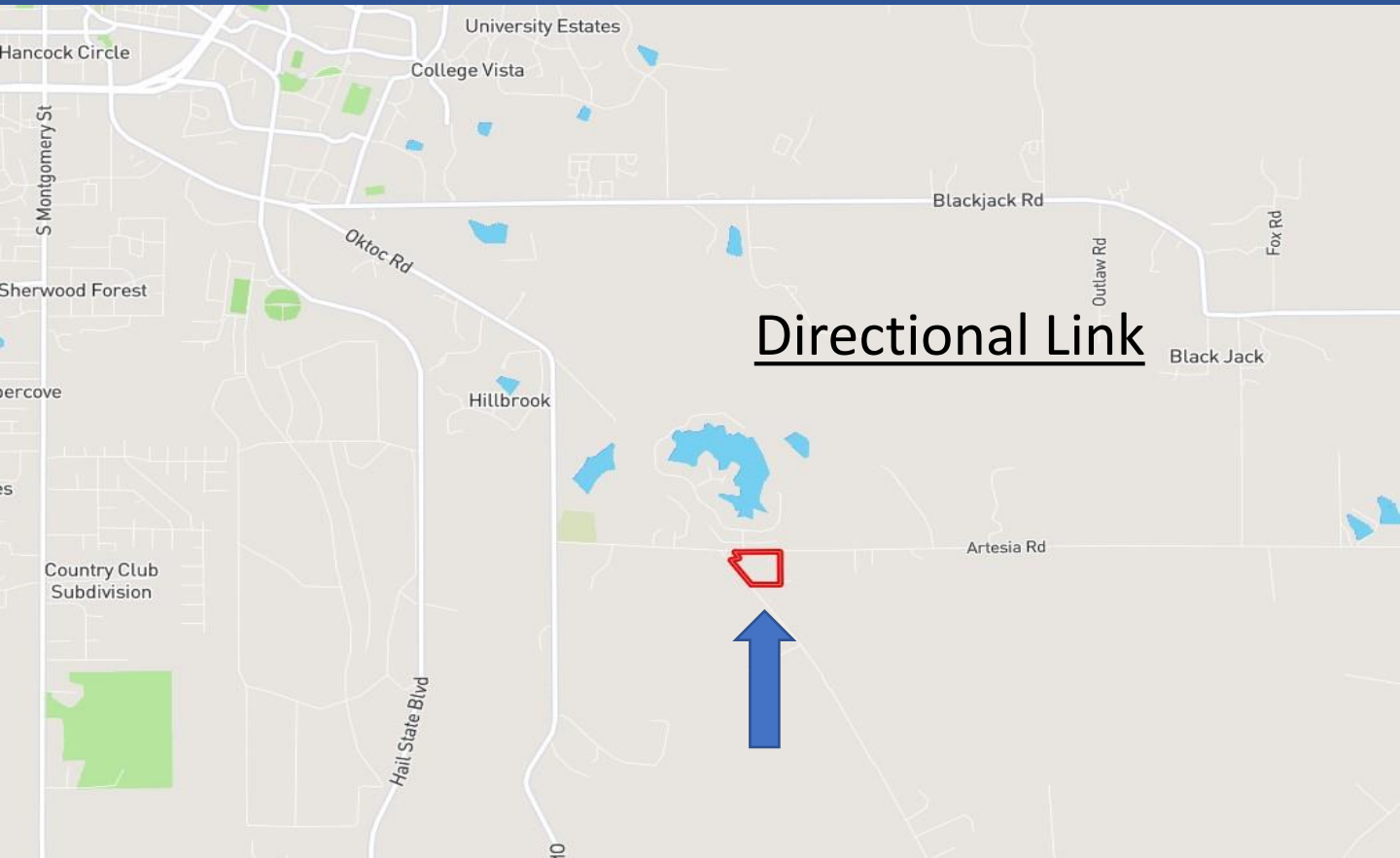
**WALKER TRANUM, REALTOR®**  
Walker@TomSmithHomes.com  
662.268.6333 office | 662.769.1442 cell



**TomSmithLandandHomes.com**

Information is believed to be accurate but not guaranteed.

# Directional Map



**Directions from Mississippi State University, Starkville MS:** From Bost Extension Center on campus in .5 miles turn left onto Stone Boulevard. Then after .1 miles turn left onto Blackjack Road. At the roundabout take the first exit for Oktoc Road. Then in .6 miles turn left onto Artesia Road. Then after .1 miles turn left onto Turkey Creek Road. The house will be on your left.



*Call me today!*

**WALKER TRANUM, REALTOR®**  
Walker@TomSmithHomes.com  
662.268.6333 office | 662.769.1442 cell



**TomSmithLandandHomes.com**

Information is believed to be accurate but not guaranteed.