

2 Bedroom / 1 Bath Camp on 1.24+/- Acres in Concordia Parish, LA



19142 Hwy 15
Vidalia, LA 71373

\$85,000

Calling all fishing and hunting fanatics! If you are looking for a camp right in the middle of some of the best duck hunting and fishing around, look no further than this three bedroom, two bath 1,200+/- square foot camp, complete with outdoor kitchen, just minutes outside of Vidalia in Concordia Parish, LA. Located just across the levy from the famous Glascock Island Hunting Club, this fantastic camp was built completely from cypress cut and milled from the property over 70 years ago. The interior has been updated over the years, and although there is some work left to be done, it is ready for the next generation of outdoorsmen. This wonderful camp, just off the Mississippi River, is just minutes from Deer Park Lake, Black River Lake Complex, Bayou Cocodrie Wildlife Management Area, and the Red River.

Directions from US-84 and LA-131 in Vidalia, LA: Travel south on LA-131 for 6.7 miles. Continue straight onto LA-15 and travel for 5.6 miles. Turn right and travel for 400 ft. Turn left and travel for 350 ft. The property will be on your left.

[Google Map](#)

Call me today!

CLIF CANNON, REALTOR®
Clif@TomSmithLand.com
601.990.5070 office | 601.565.1070 cell



TomSmithLandandHomes.com

Information is believed to be accurate but not guaranteed.



Call me today!

CLIF CANNON, REALTOR®
Clif@TomSmithLand.com
601.990.5070 office | 601.565.1070 cell



TomSmithLandandHomes.com

Information is believed to be accurate but not guaranteed.



Call me today!

CLIF CANNON, REALTOR®
Clif@TomSmithLand.com
601.990.5070 office | 601.565.1070 cell



Expect More. Get More.



TomSmithLandandHomes.com

Information is believed to be accurate but not guaranteed.



Call me today!

CLIF CANNON, REALTOR®

Clif@TomSmithLand.com

601.990.5070 office | 601.565.1070 cell



Expect More. Get More.

TomSmithLandandHomes.com

Information is believed to be accurate but not guaranteed.

Aerial Map



Call me today!

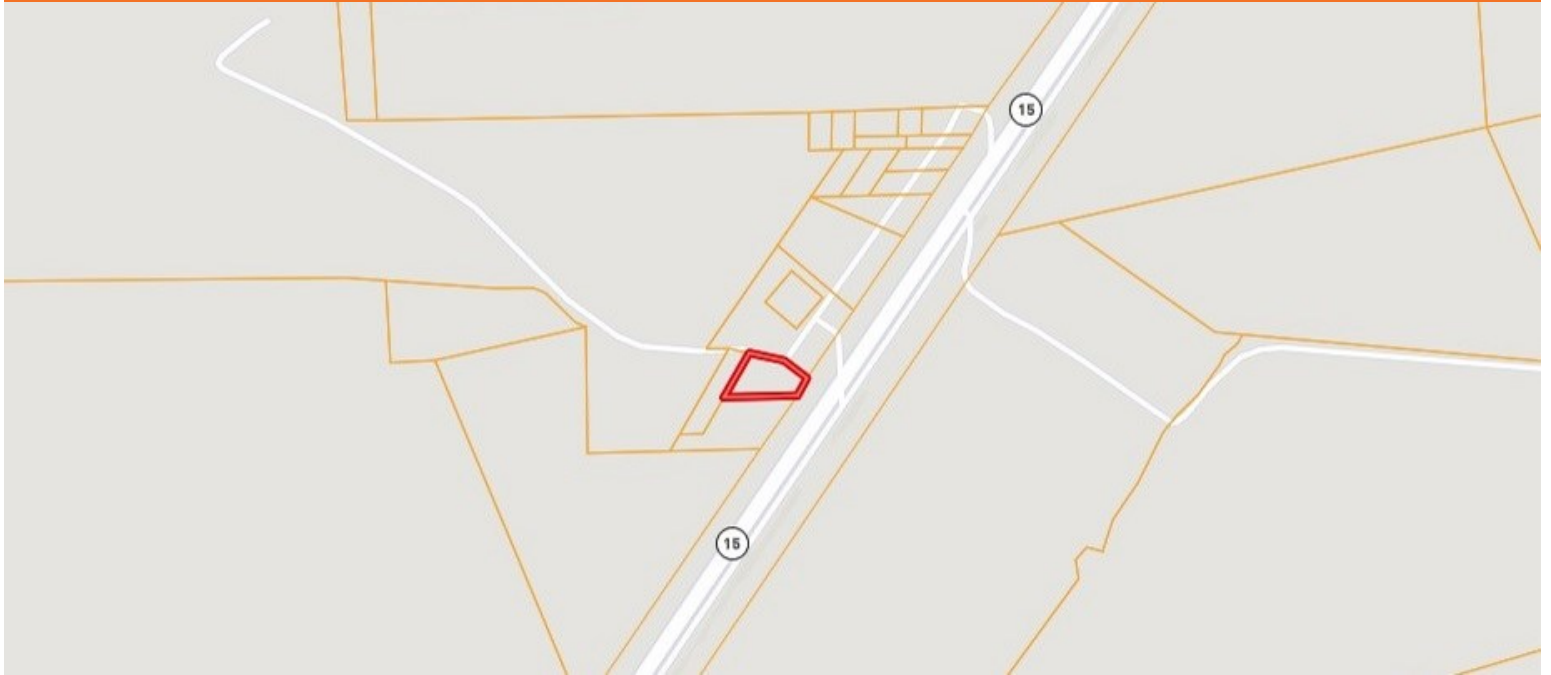
CLIF CANNON, REALTOR®
Clif@TomSmithLand.com
601.990.5070 **office** | 601.565.1070 **cell**



TomSmithLandandHomes.com

Information is believed to be accurate but not guaranteed.

Ownership Map



Flood Map



Call me today!

CLIF CANNON, REALTOR®

Clif@TomSmithLand.com

601.990.5070 office | 601.565.1070 cell



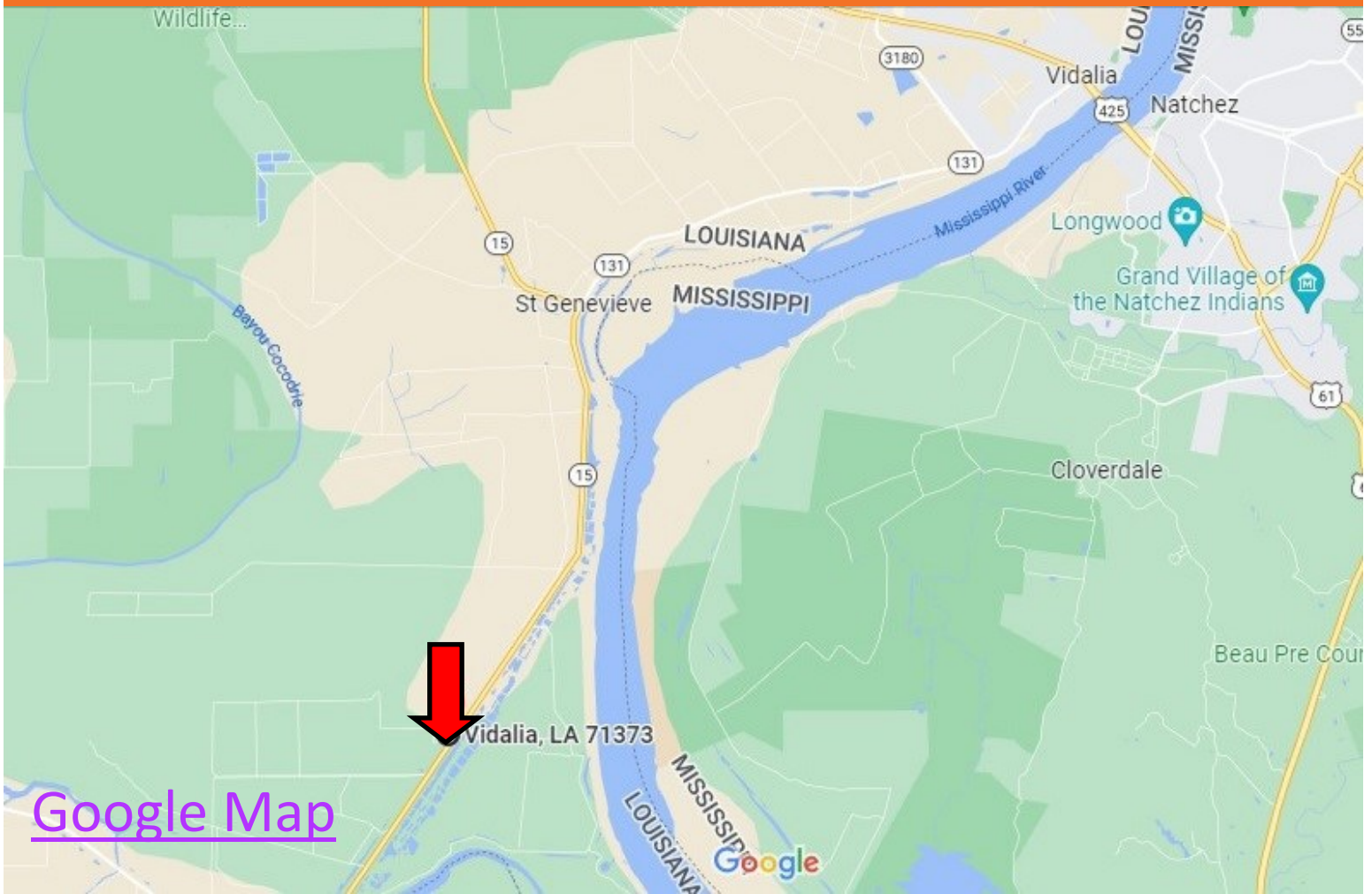
Expect More. Get More.



TomSmithLandandHomes.com

Information is believed to be accurate but not guaranteed.

Directional Map



[Google Map](#)

Directions from US-84 and LA-131 in Vidalia, LA: Travel south on LA-131 for 6.7 miles. Continue straight onto LA-15 and travel for 5.6 miles. Turn right and travel for 400 ft. Turn left and travel for 350 ft. The property will be on your left.

19142 Hwy 15

VIDALIA, LA, 71373

Call me today!

CLIF CANNON, REALTOR®

Clif@TomSmithLand.com

601.990.5070 office | 601.565.1070 cell



Expect More. Get More.

TomSmithLandandHomes.com

Information is believed to be accurate but not guaranteed.