

1.74+/- Homesite in Pike County, MS



000 Magnolia Progress Road
Magnolia, MS 39652

\$18,000

If you want to build in southern Pike County, MS, look no further than this 1.74+/- acre lot on Magnolia Progress Road just minutes outside of Magnolia, MS. This property has previously had a mobile home on it. This wooded lot is large enough to allow the new owner to clear more land and build to suit or change the location of the house spot. Water, electricity, and septic are still in place, and with just a little work, this wonderful lot could be ready for a home.

From the intersection of US-51 and MS-48 in Magnolia, MS: Travel east on MS-48 for .9 miles. Keep right at the fork. Continue onto Magnolia Progress Road and travel for 1.9 miles. The property will be on the right.

[Google Maps](#)



Call me today!

CLIF CANNON, REALTOR®
Clif@TomSmithLand.com
601.990.5070 **office** | 601.565.1070 **cell**



TomSmithLandandHomes.com

Information is believed to be accurate but not guaranteed.



Call me today!

CLIF CANNON, REALTOR®

Clif@TomSmithLand.com

601.990.5070 **office** | 601.565.1070 **cell**



Expect More. Get More.

TomSmithLandandHomes.com

Information is believed to be accurate but not guaranteed.

Aerial Map



Interactive Map

Call me today!

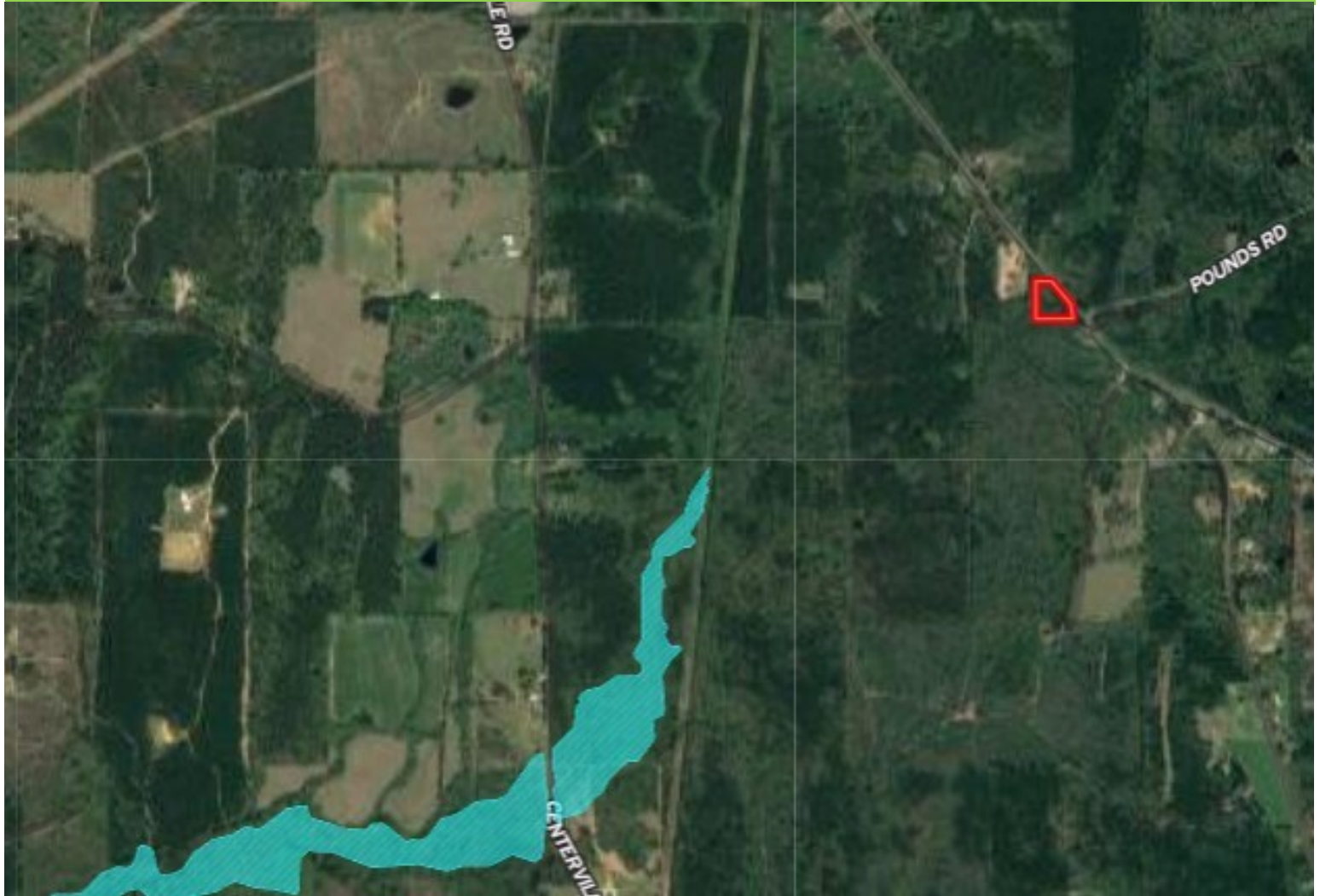
CLIF CANNON, REALTOR®
Clif@TomSmithLand.com
601.990.5070 **office** | 601.565.1070 **cell**



TomSmithLandandHomes.com

Information is believed to be accurate but not guaranteed.

Flood Map



Call me today!

CLIF CANNON, REALTOR®

Clif@TomSmithLand.com

601.990.5070 **office** | 601.565.1070 **cell**



Expect More. Get More.

TomSmithLandandHomes.com

Information is believed to be accurate but not guaranteed.

Topographic Map



Call me today!

CLIF CANNON, REALTOR®

Clif@TomSmithLand.com

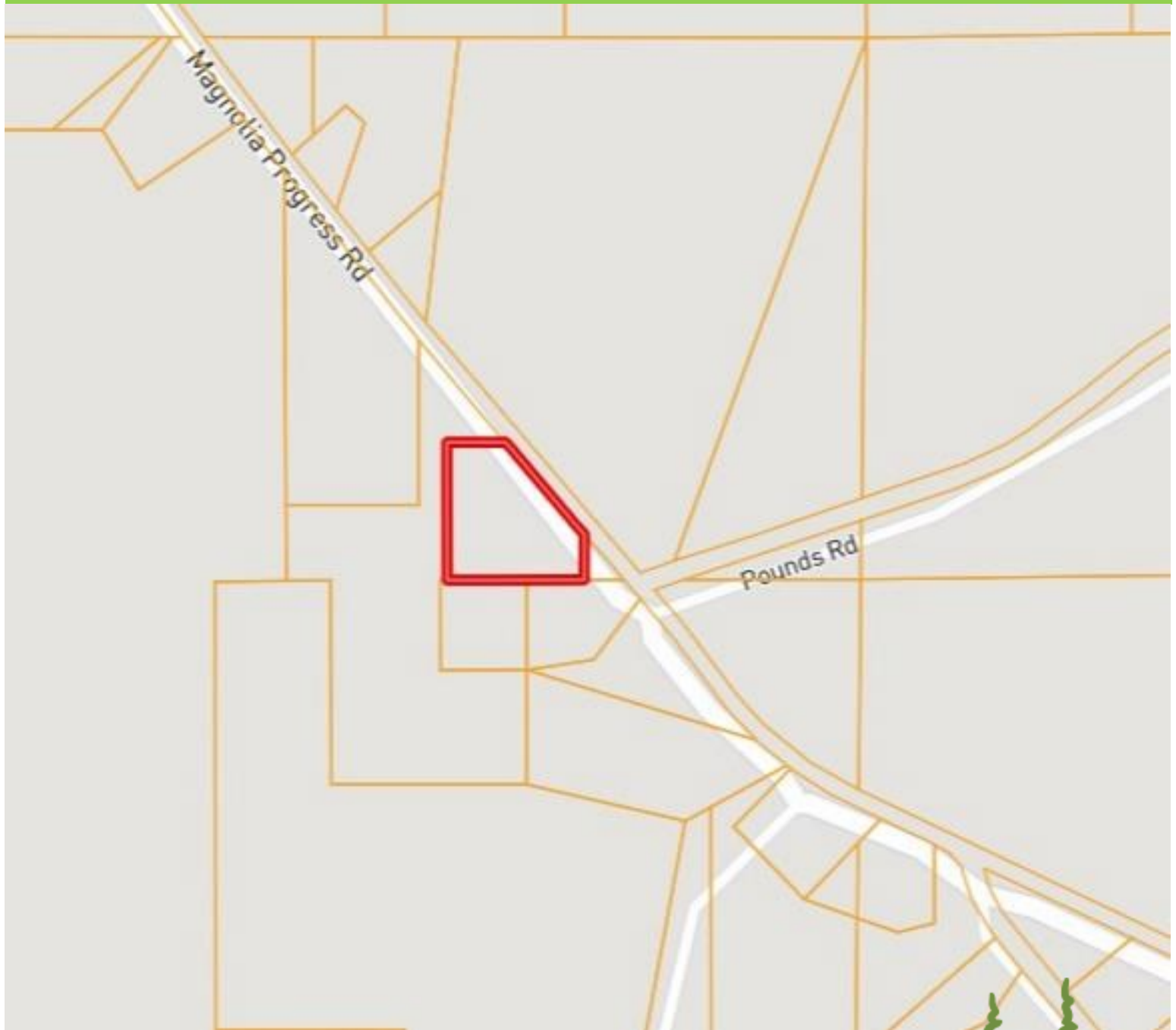
601.990.5070 **office** | 601.565.1070 **cell**



TomSmithLandandHomes.com

Information is believed to be accurate but not guaranteed.

Ownership Map



Call me today!

CLIF CANNON, REALTOR®

Clif@TomSmithLand.com

601.990.5070 **office** | 601.565.1070 **cell**

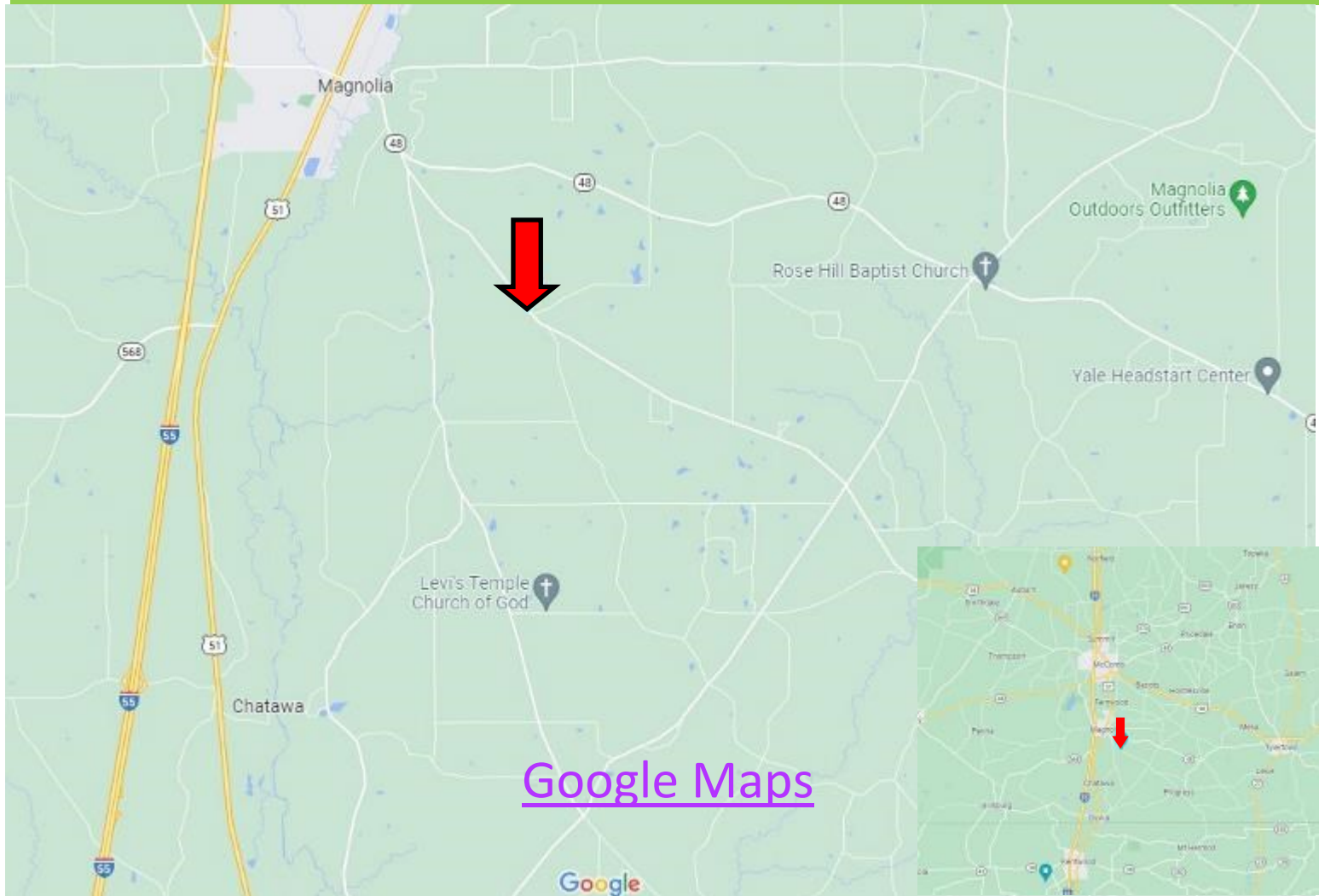


Expect More. Get More.

TomSmithLandandHomes.com

Information is believed to be accurate but not guaranteed.

Directional Map



From the intersection of US-51 and MS-48 in Magnolia, MS: Travel east on MS-48 for .9 miles. Keep right at the fork. Continue onto Magnolia-Progress Road and travel for 1.9 miles. The property will be on the right.

000 Magnolia Progress Road
Magnolia, MS 39652

Call me today!

CLIF CANNON, REALTOR®
Clif@TomSmithLand.com
601.990.5070 **office** | 601.565.1070 **cell**



TomSmithLandandHomes.com

Information is believed to be accurate but not guaranteed.