

14± acre Hunting Camp in Carroll County, MS



Have you been looking for a hunting tract that produces great deer and ready to hunt? Welcome to your Carroll County Hunting Camp, situated just 30 minutes south of the crappie fishing central, Grenada Lake, and minutes from Winona, MS! This 14± acre tract is set up with a 420 sq ft cabin that includes one bedroom, one shower (unfinished), kitchen area, and one restroom (sold as is). Access around the property is easy with an established road system. There are two developed wildlife food plots with tripod feeders, a small pond that will provide an excellent wildlife water supply, a phantom box blind (negotiable), great bedding areas all over the property, and an abundance of vegetation for the local wildlife habitat. During the initial walk-through, there were deer signs all over the property, with the biggest being measuring in at 150". There is county road frontage and utilities are available from the road. Call Kadero Edley today for your private showing!



Call me today!

KADERO EDLEY, REALTOR®
Kadero@TomSmithLand.com
601.898.2772 **office** | 601.488.7000 **cell**



TomSmithLandandHomes.com

Information is believed to be accurate but not guaranteed.



Call me today!

KADERO EDLEY, REALTOR®
Kadero@TomSmithLand.com
601.898.2772 office | 601.488.7000 cell



Expect More. Get More.

TomSmithLandandHomes.com

Information is believed to be accurate but not guaranteed.



Call me today!

KADERO EDLEY, REALTOR®
Kadero@TomSmithLand.com
601.898.2772 office | 601.488.7000 cell



Expect More. Get More.

TomSmithLandandHomes.com

Information is believed to be accurate but not guaranteed.



Call me today!



KADERO EDLEY, REALTOR®
Kadero@TomSmithLand.com
601.898.2772 office | 601.488.7000 cell



Expect More. Get More.

TomSmithLandandHomes.com

Information is believed to be accurate but not guaranteed.

Aerial Map



[CLICK HERE FOR INTERACTIVE MAP](#)

*Call me
today!*

KADERO EDLEY, REALTOR®
Kadero@TomSmithLand.com
601.898.2772 **office** | 601.488.7000 **cell**

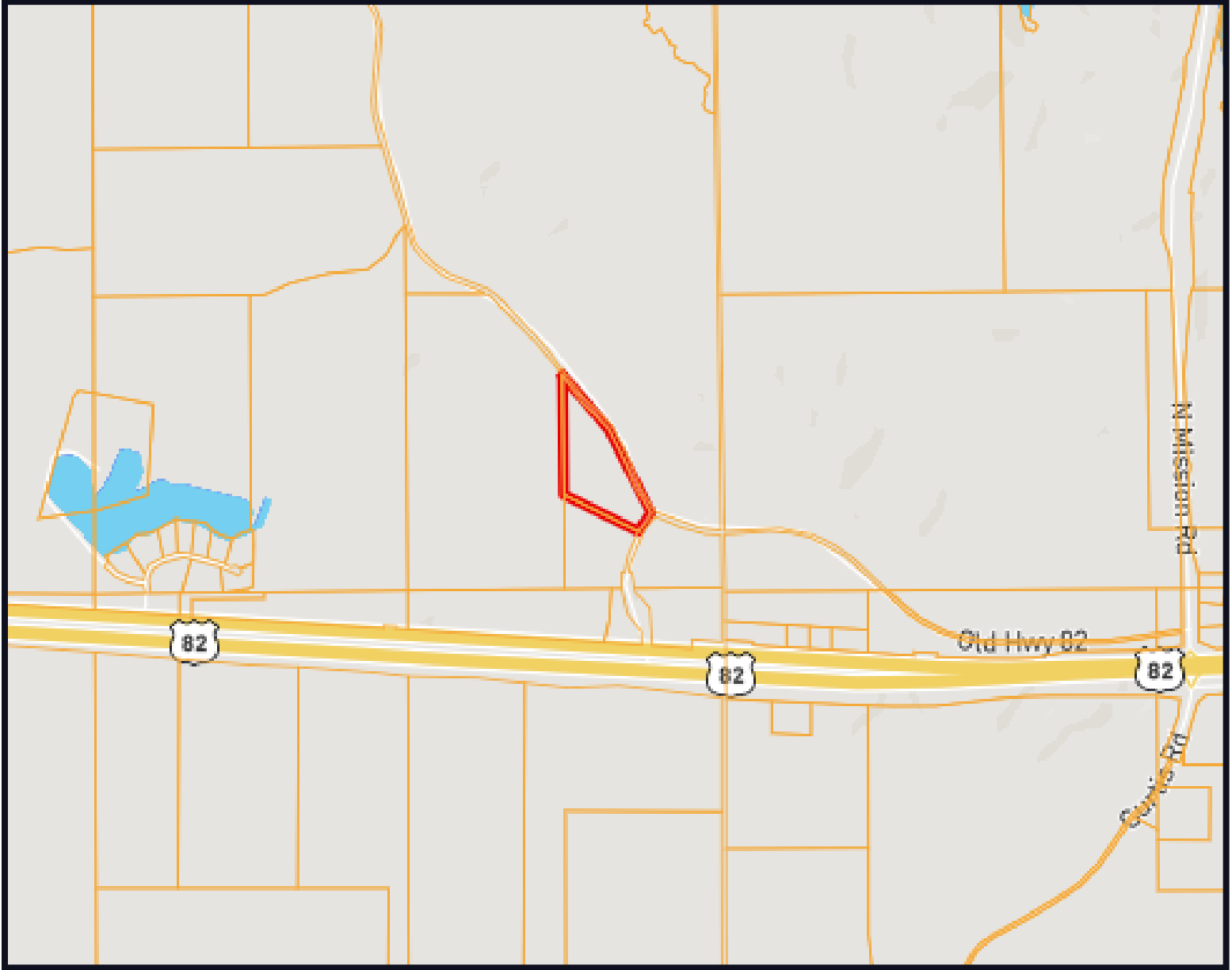


Expect More. Get More.

TomSmithLandandHomes.com

Information is believed to be accurate but not guaranteed.

Ownership Map



*Call me
today!*

KADERO EDLEY, REALTOR®
Kadero@TomSmithLand.com
601.898.2772 office | 601.488.7000 cell



Expect More. Get More.

TomSmithLandandHomes.com

Information is believed to be accurate but not guaranteed.

Topographic Map



Call me today!

KADERO EDLEY, REALTOR®
Kadero@TomSmithLand.com
601.898.2772 office | 601.488.7000 cell

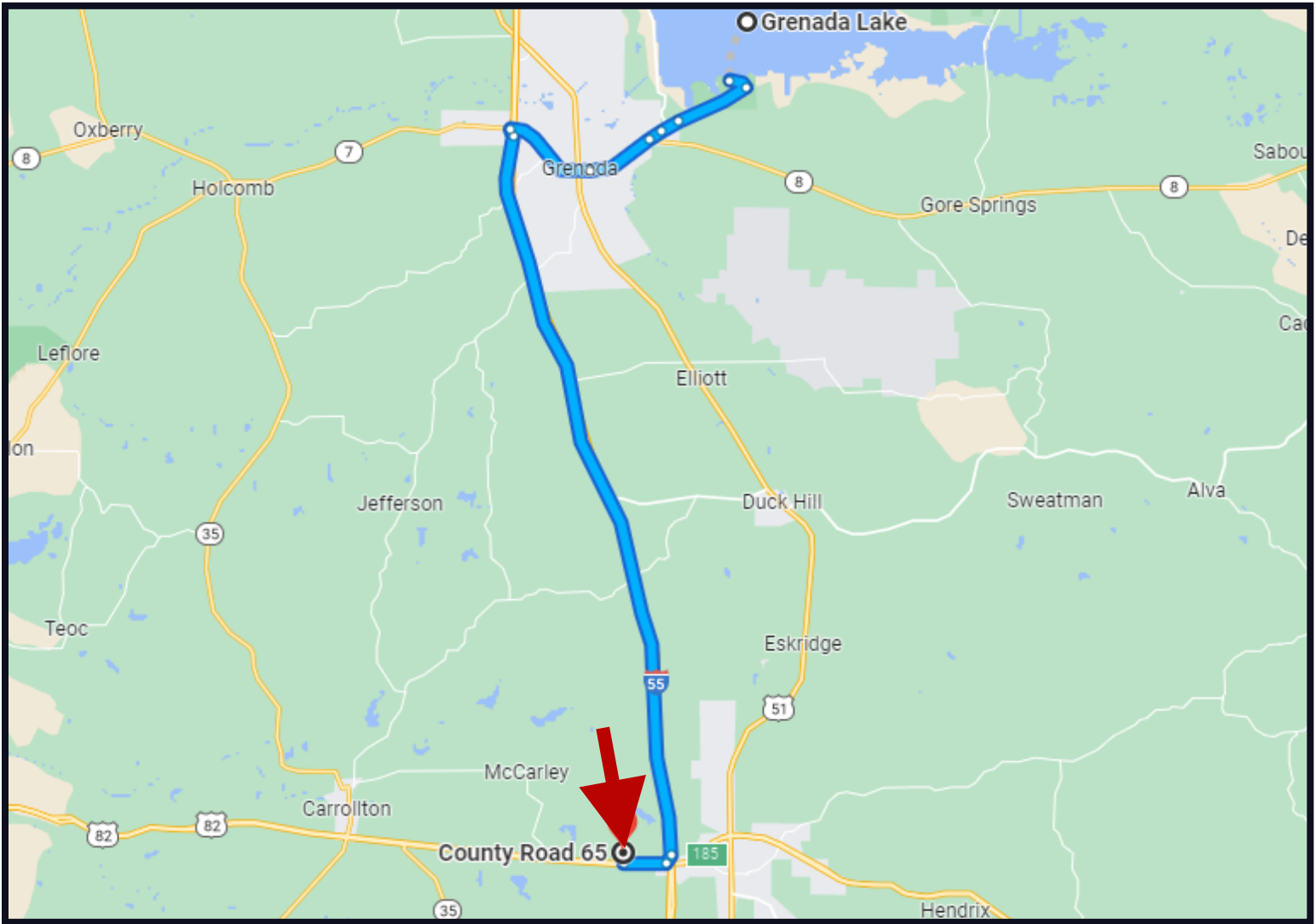


Expect More. Get More.

TomSmithLandandHomes.com

Information is believed to be accurate but not guaranteed.

Directional Map



Direction from CR 65 in Winona, MS: Travel I-55 N in Montgomery County from US-82 E, Then follow I-55 N to MS-8 E/Sunset Dr in Grenada. Take exit 206 from I-55 N, Then continue on MS-8 E. Drive to MS-333/Mississippi 333 Scenic Loop, Then turn left onto MS-333/Mississippi 333 Scenic Loop.

[Google Map Link](#)



Call me today!

KADERO EDLEY, REALTOR®
Kadero@TomSmithLand.com
601.898.2772 office | 601.488.7000 cell



TomSmithLandandHomes.com

Information is believed to be accurate but not guaranteed.