

14.5+/- Acre Homesite in Pike County, MS



000Magnolia Progress Road
Magnolia, MS 39652

\$52,000

Come and see this fantastic property outside Magnolia in Pike County, MS. This 14.5+/- acre property is a home seeker's dream. With no restrictions, utilities available at the road, and many home sites available, this property will provide serenity and solitude to its new owners. The gently rolling hills provide fantastic views, and wildlife is abundant. The property has a perimeter road, and a homesite has previously been cleared. The half-acre pond, stocked many years ago, provides beautiful views and recreational opportunities. This previously logged property is a prime candidate to be turned into pastureland for a mini farm or other agricultural activity.

Directions from the intersection of I-55 and MS-48 in Magnolia MS: Exit I-55 at exit 10 and travel east on MS-48 for 1.9 miles. At the "Y" continue straight onto Magnolia Progress Road and travel for 2.5 miles. The property will be on the right.

[Google Maps](#)

Call me today!

CLIF CANNON, REALTOR®
Clif@TomSmithLand.com
601.990.5070 office | 601.565.1070 cell



TomSmithLandandHomes.com

Information is believed to be accurate but not guaranteed.



Call me today!

CLIF CANNON, REALTOR®
Clif@TomSmithLand.com
601.990.5070 office | 601.565.1070 cell



TomSmithLandandHomes.com

Information is believed to be accurate but not guaranteed.



Call me today!

CLIF CANNON, REALTOR
Clif@TomSmithLand.com
601.990.5070 office | 601.565.1070 cell



TomSmithLandandHomes.com

Information is believed to be accurate but not guaranteed.

Aerial Map



Call me today!

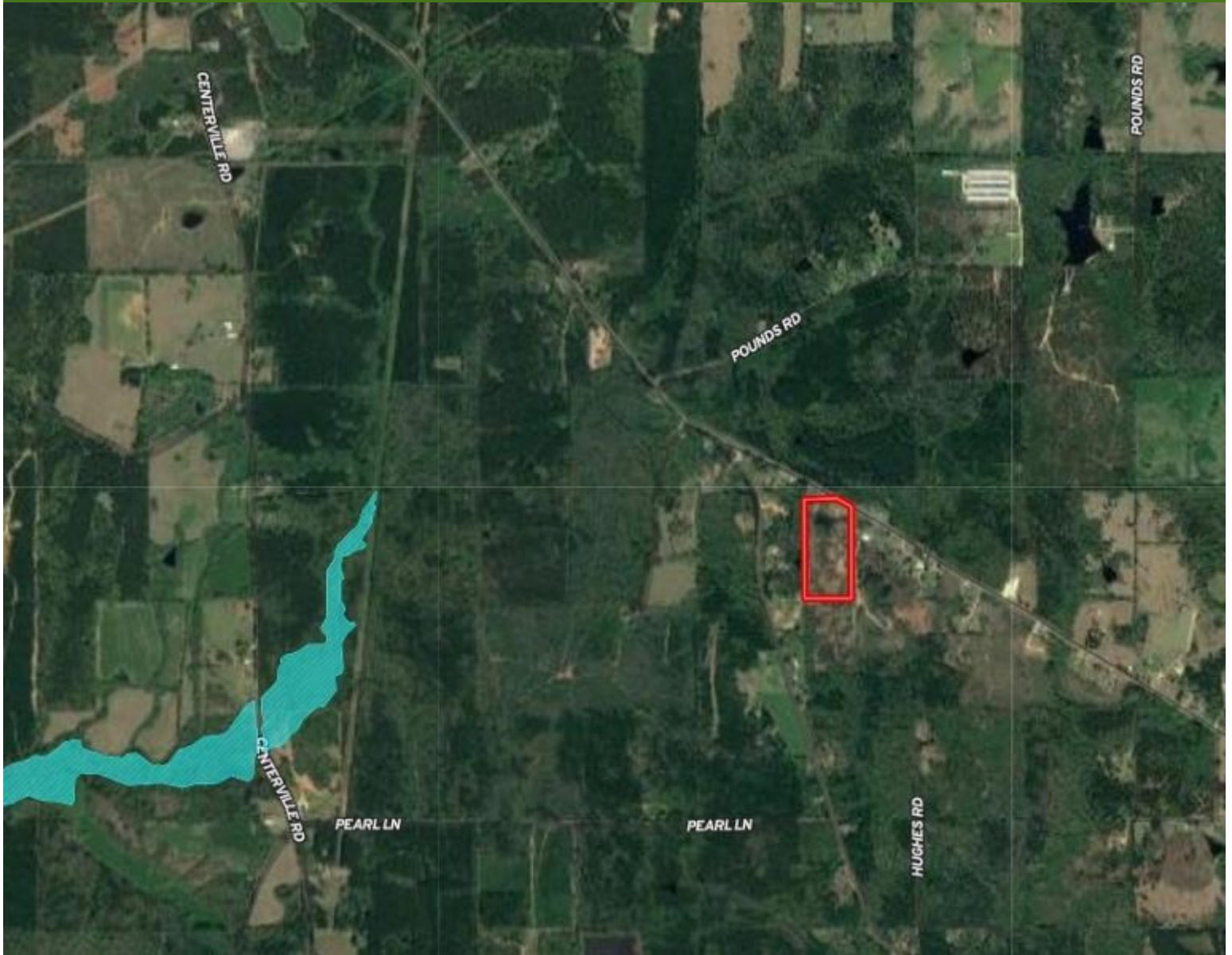
CLIF CANNON, REALTOR®
Clif@TomSmithLand.com
601.990.5070 office | 601.565.1070 cell



TomSmithLandandHomes.com

Information is believed to be accurate but not guaranteed.

Flood Map



Call me today!

CLIF CANNON, REALTOR®

Clif@TomSmithLand.com

601.990.5070 **office** | 601.565.1070 **cell**



Expect More. Get More.

TomSmithLandandHomes.com

Information is believed to be accurate but not guaranteed.

Topographic Map



Call me today!

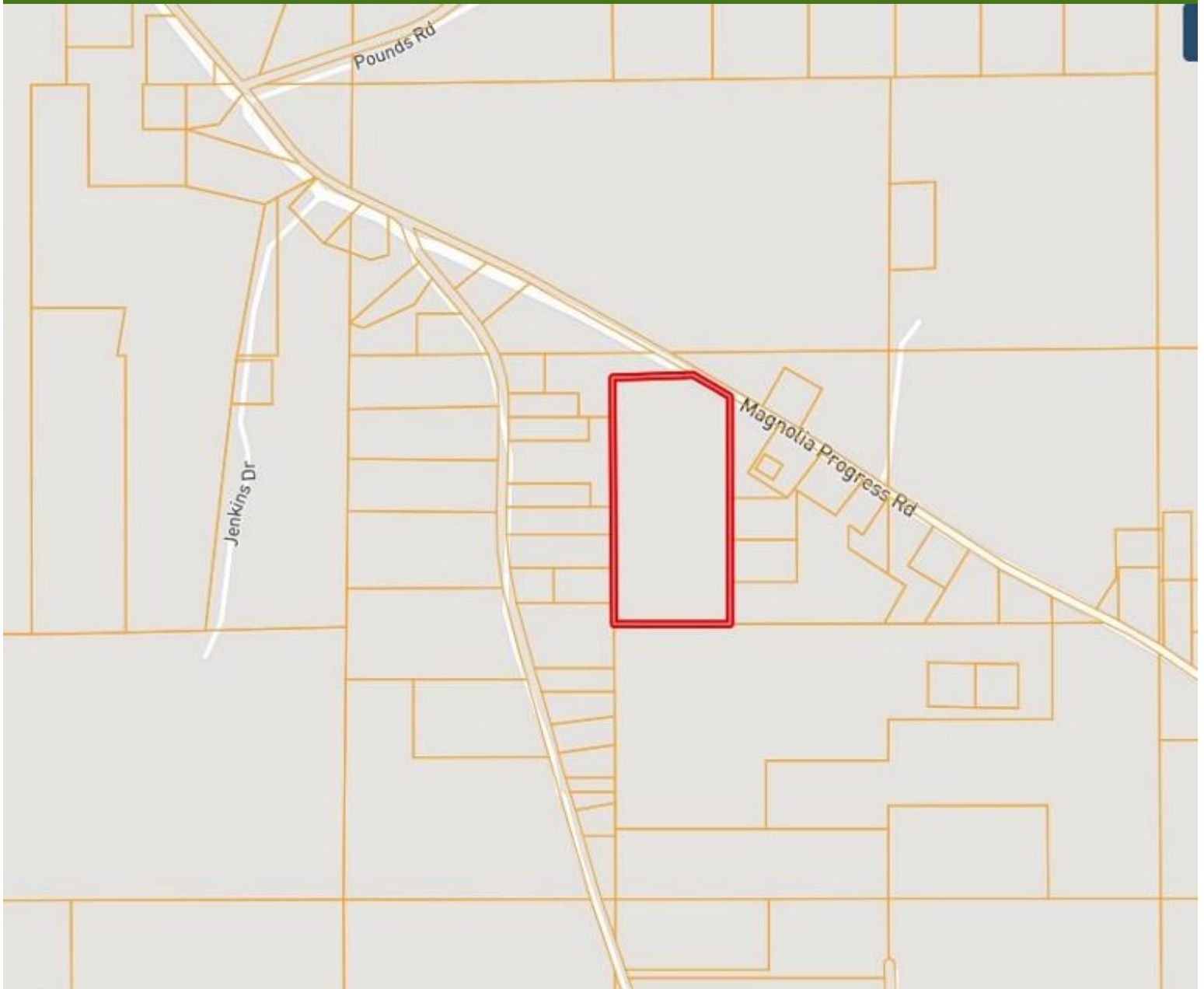
CLIF CANNON, REALTOR®
Clif@TomSmithLand.com
601.990.5070 office | 601.565.1070 cell



TomSmithLandandHomes.com

Information is believed to be accurate but not guaranteed.

Ownership Map



Call me today!

CLIF CANNON, REALTOR®

Clif@TomSmithLand.com

601.990.5070 office | 601.565.1070 cell

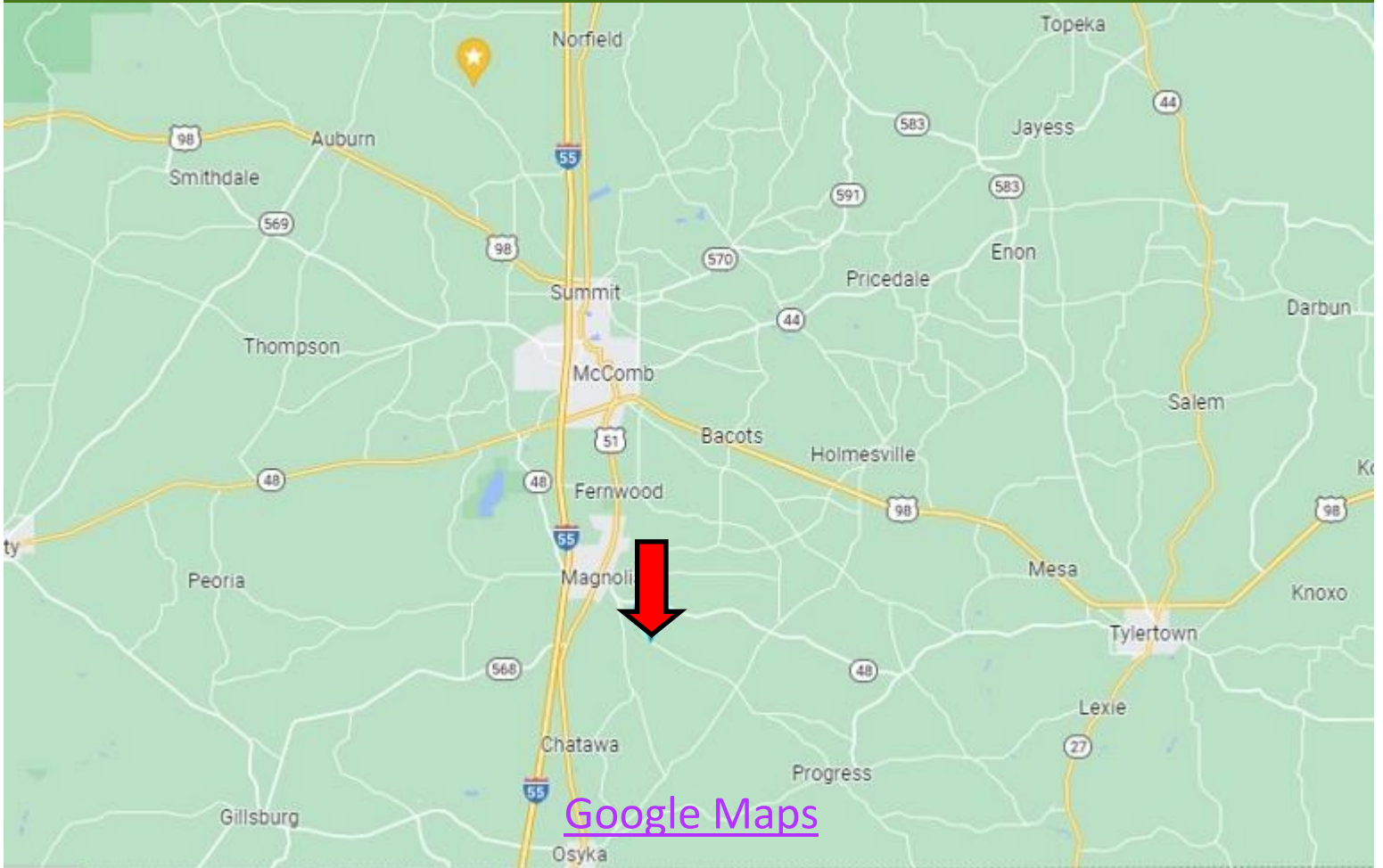


Expect More. Get More.

TomSmithLandandHomes.com

Information is believed to be accurate but not guaranteed.

Directional Map



Directions from the intersection of I-55 and MS-48 in Magnolia MS: Exit I-55 at exit 10 and travel east on MS-48 for 1.9 miles. At the “Y” continue straight onto Magnolia Progress Road and travel for 2.5 miles. The property will be on the right.

000 Magnolia Progress Road
Magnolia, MS 39652

Call me today!

CLIF CANNON, REALTOR®
Clif@TomSmithLand.com
601.990.5070 **office** | 601.565.1070 **cell**



TomSmithLandandHomes.com

Information is believed to be accurate but not guaranteed.