

The Perfect Place To Build Your Dream Home

7± Acres in Winston County, MS

\$28,000



Look at this great opportunity to own a tract of land in Winston County, MS, that would make for an ideal place for your dream home. There are 7+/- acres of mixed hardwood and pines with approximately 850ft of road frontage on McCullough Road. The property is just a few minutes from Winston Academy and only 30 minutes from Starkville, MS. No mobile homes allowed. There is approximately 1.5 acres of cleared road frontage along McCullough. There are utilities available on the road. Call Travis Smith today to schedule your private viewing!

DIRECTIONS FROM INTERSECTION HWY 14 AND HWY 15 Louisville, MS: Head east on W Main St and travel for 3.4 miles. Turn left onto McCullough Rd and travel for 0.2 miles and the property is on the right.

[GOOGLE MAP LINK](#)



Call me today!

TRAVIS SMITH, REALTOR®
Travis@TomSmithLand.com
601.898.2772 **office** | 601.600.0428 **cell**



TomSmithLandandHomes.com

Information is believed to be accurate but not guaranteed.



*Call me
today!*

TRAVIS SMITH, REALTOR®
Travis@TomSmithLand.com
601.898.2772 **office** | 601.600.0428 **cell**



Expect More. Get More.

TomSmithLandandHomes.com

Information is believed to be accurate but not guaranteed.

AERIAL MAP



CLICK [HERE](#) FOR AN INTERACTIVE MAP

Call me today!

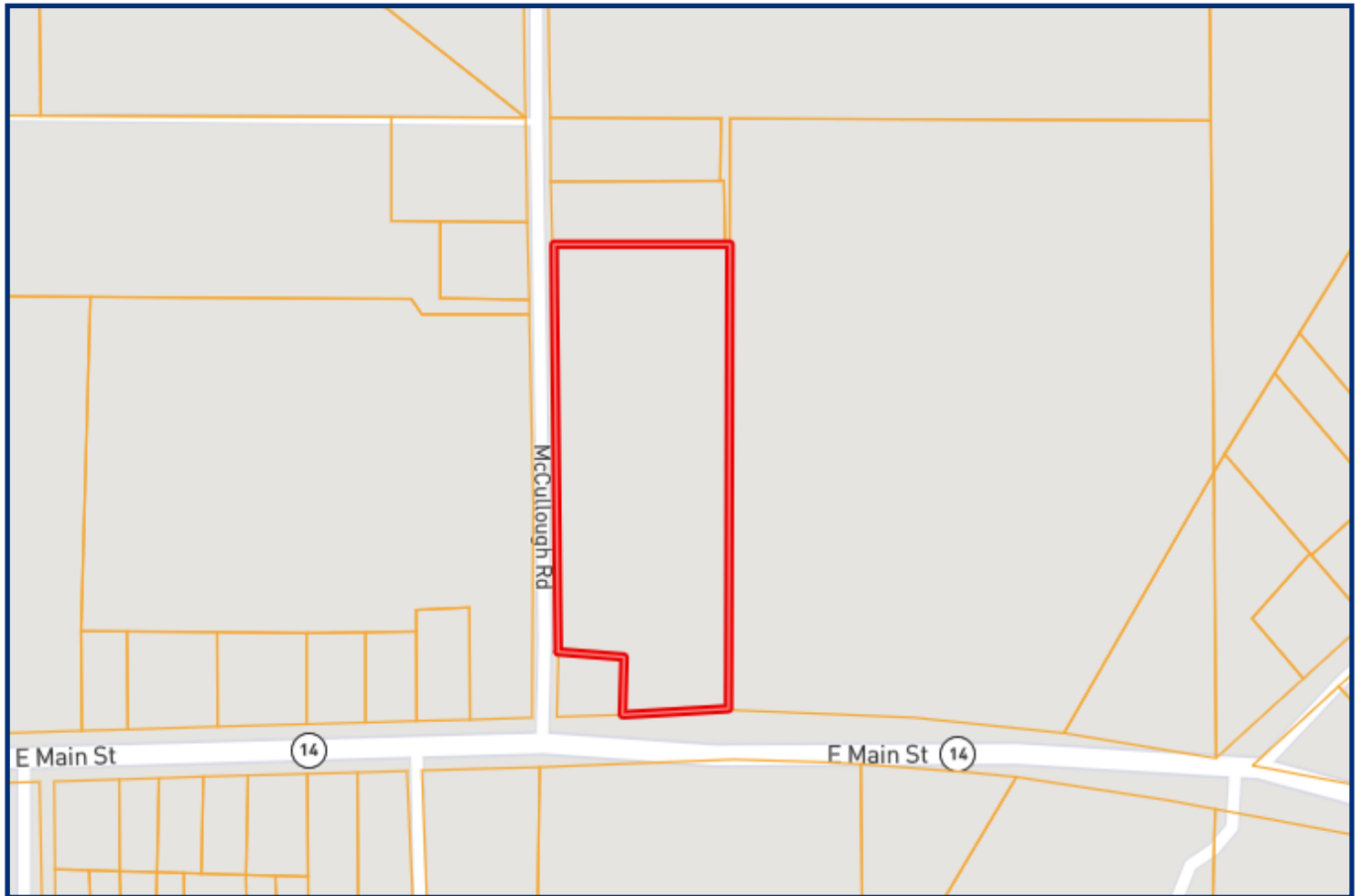
TRAVIS SMITH, REALTOR®
Travis@TomSmithLand.com
601.898.2772 **office** | 601.600.0428 **cell**



TomSmithLandandHomes.com

Information is believed to be accurate but not guaranteed.

OWNERSHIP MAP



*Call me
today!*

TRAVIS SMITH, REALTOR®
Travis@TomSmithLand.com
601.898.2772 **office** | 601.600.0428 **cell**

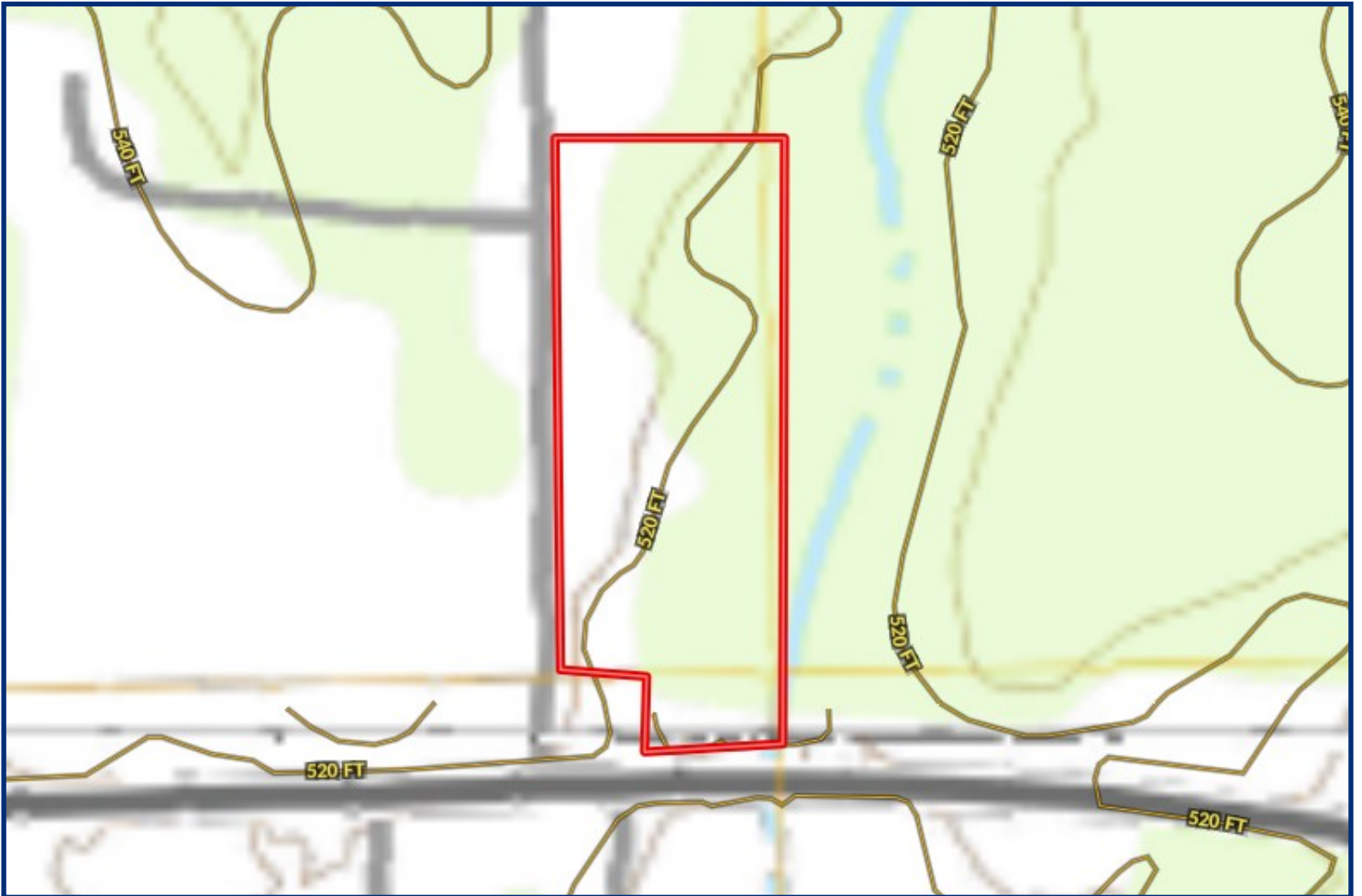


Expect More. Get More.

TomSmithLandandHomes.com

Information is believed to be accurate but not guaranteed.

TOPO MAP



*Call me
today!*

TRAVIS SMITH, REALTOR®
Travis@TomSmithLand.com
601.898.2772 **office** | 601.600.0428 **cell**

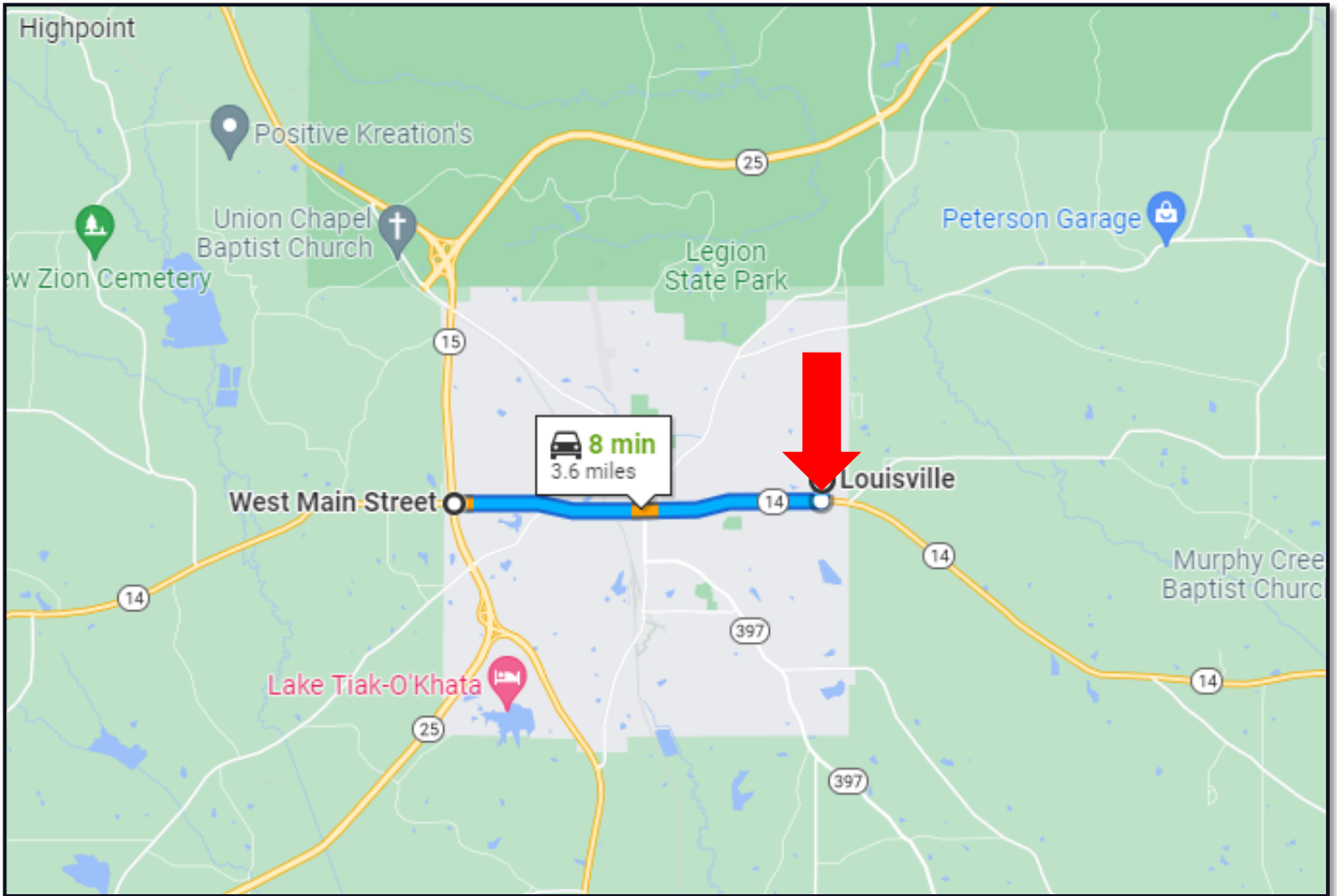


Expect More. Get More.

TomSmithLandandHomes.com

Information is believed to be accurate but not guaranteed.

DIRECTIONAL MAP



DIRECTIONS FROM INTERSECTION HWY 14 AND HWY 15 Louisville, MS:
Head east on W Main St and travel for 3.4 miles. Turn left onto McCullough Rd and travel for 0.2 miles and the property is on the right.

GOOGLE MAP LINK



Call me today!

TRAVIS SMITH, REALTOR®
Travis@TomSmithLand.com
601.898.2772 **office** | 601.600.0428 **cell**



TomSmithLandandHomes.com

Information is believed to be accurate but not guaranteed.